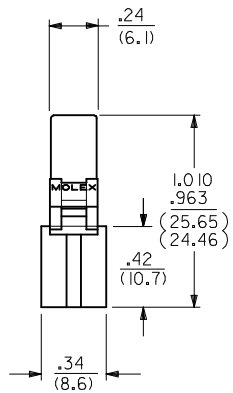
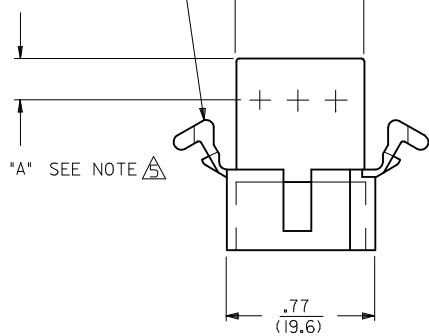
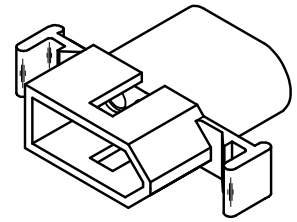
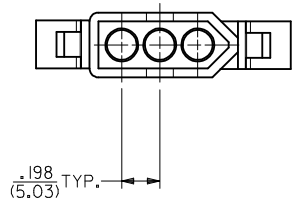
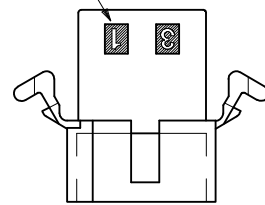


MOUNTING EAR
(WHEN SPECIFIED)
SEE DETAIL A OR B
(PRE-BENT SHOWN)

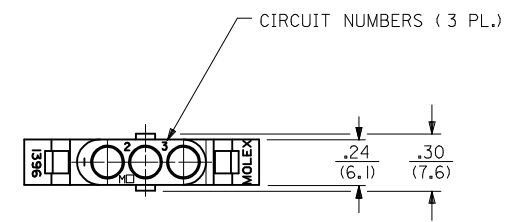


CIRCUIT I.D. NUMBERS

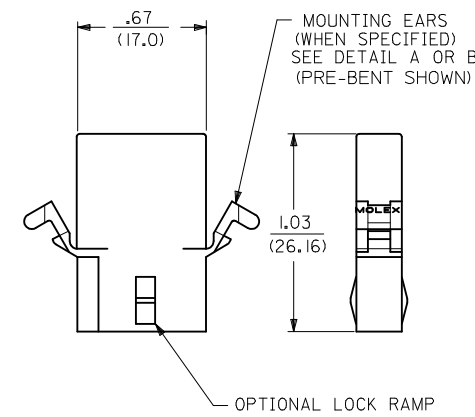


PLUG

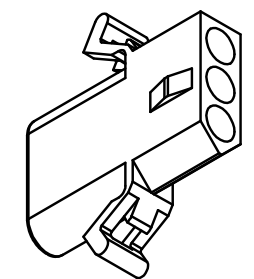
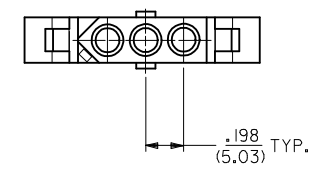
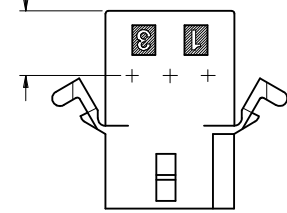
1396-P SHOWN ABOVE (WITH STANDARD MOUNTING EAR)



ALTERNATE END CONFIGURATION
SEE NOTE

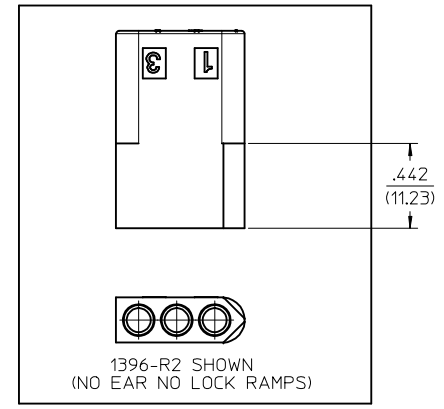


"B" SEE NOTE



RECEPTACLE

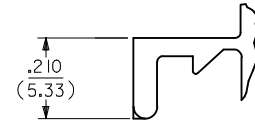
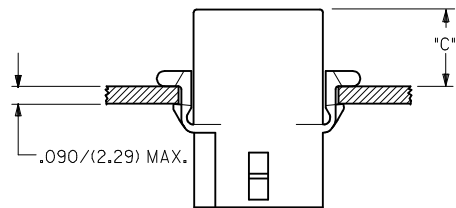
1396-R4 SHOWN (WITH PRE-BENT EAR)



REMOVE OBSOLETE EC NO: UCP2017-2556 DRWNS:APPELDORN 2017/05/26 CHKD:HKIPPER 2017/05/26 APPR:FSMITH 2017/05/30	QUALITY SYMBOLS	GENERAL TOLERANCES (UNLESS SPECIFIED)		DIMENSION STYLE	SCALE	DESIGN UNITS	THIRD ANGLE PROJECTION	
	▽=0	mm	INCH	IN/MM	2:1	INCH		
	▽=0	4 PLACES ± .010	± .010	DRAWN BY	DATE	TITLE		
	▽=0	3 PLACES ± .010	± .010	JJS	1988/04/08	.093/(2.36) HOUSING PLUG AND RECEPTACLE 3 CIRCUIT .198 CENTERS		
		2 PLACES ± 0.25	± .014	CHECKED BY	DATE			
		1 PLACE ± 0.35	± .014	RW	1988/04/08			
		0 PLACE ± .010	± .010	APPROVED BY	DATE			
				FSMITH	2014/06/23			
		ANGULAR ±1/2°		MATERIAL NO.	DOCUMENT NO.			
		DRAFT WHERE APPLICABLE MUST REMAIN WITHIN DIMENSIONS		SEE CHART		SD-1396-*	SHEET NO. 1 OF 2	
		THIS DRAWING CONTAINS INFORMATION THAT IS PROPRIETARY TO MOLEX INCORPORATED AND SHOULD NOT BE USED WITHOUT WRITTEN PERMISSION						

13	12	11	10	9	8	7	6	5	4	3	2	1
PLUG		RECEPTACLE										
ORDER NO.	ENG. NO.	ORDER NO.	ENG. NO.									
03-09-2031	I396-P	03-09-1031	I396-R									
03-09-2032	I396-P1	03-09-1032	I396-R1									
03-09-7032	I396-PIBK	03-09-1033	I396-R2									
03-09-2037	I396-P3	03-09-6033	I396-R2BK									
		03-09-1081	I396-R4									

HOUSING	DIM. "A"	DIM. "B"	"C" PREBENT EAR	"C" STANDARD EAR
PLUG	.933/(23.70)	.375/(9.53)	.40/(10.2)	.38/(9.7)
RECEPT.	.830/(21.08)	.312/(7.92)	.41/(10.4)	.39/(9.9)



LEGEND:

I396-****-*

P = PLUG
R = RECEPTACLE

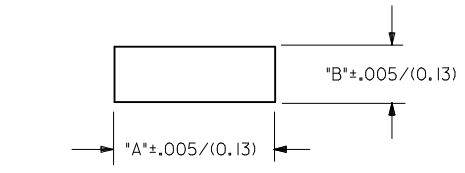
- BLANK = WITH STANDARD EARS
 1 = WITHOUT EARS
 2 = RECEPTACLE WITHOUT EARS, WITHOUT LOCK RAMPES
 3 = PLUG ONLY, W/ SIDE MOUNT (SEE SD-I396-P3)
 4 = WITH PREBENT EARS

COLOR: BLANK=NATURAL COLOR
 AM=AMBER BK=BLACK BU=BLUE
 BN=BROWN GY=GRAY GN=GREEN
 OR=ORANGE RD=RED YW=YELLOW

BLANK = NYLON 6/6, 94V-2

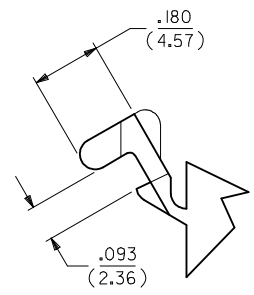
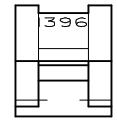
NOTES:

1. MATERIAL: SEE LEGEND
 2. FINISH: NOT APPLICABLE
 3. PRODUCT SPECIFICATION: PS-02-09
 4. PACKAGING INFORMATION: REFER TO PK-1396-002
- △ DIMENSION FROM THE BACK OF THE HOUSING TO THE END OF BRUSH ON WIRE INSERTED INTO THE HOUSING:
 DIM "A"= .256/6.50 FOR 42477 & 42478 TERMINALS
 .216/5.49 FOR ALL OTHER .093 TERMINALS
 DIM "B"= .377/9.58 FOR 42477 & 42478 TERMINALS
 .337/8.56 FOR ALL OTHER .093 TERMINALS
- △ CIRCUIT I.D. NUMBERS ON SIDE OF HOUSING APPEAR ON PARTS FROM TOOLS BUILT AFTER 5/4/93.
- △ END CONFIGURATION IS DEPENDENT ON MOLD DESIGN. PARTS MAY HAVE EITHER CONFIGURATION.
8. PARTS CONFORM TO CLASS B REQUIREMENTS OF COSMETIC SPECIFICATION PS-45499-002.



RECOMMENDED PANEL MOUNTING HOLE

DETAIL A
STANDARD MOUNTING EAR
(SCALE 4:1)



DETAIL B
PREBENT MOUNTING EAR
(SCALE 4:1)

SEE SHEET 1 EC NO: UCP2017-2556 DRAWN: APPELDORN 2017/05/26 CHKD: KIPPER 2017/05/26 APPR: FSMITH 2017/05/30	QUALITY SYMBOLS ▽=0 ▽=0 ▽=0	GENERAL TOLERANCES (UNLESS SPECIFIED)		DIMENSION STYLE IN/MM	SCALE 2:1	DESIGN UNITS INCH	THIRD ANGLE PROJECTION
			mm	INCH	DRAWN BY JJS	DATE 1988/04/08	.093/(2.36) HOUSING PLUG AND RECEPTACLE 3 CIRCUIT .198 CENTERS molex
		4 PLACES ± --- ± ---	3 PLACES ± --- ± .010	2 PLACES ± 0.25 ± .014	CHECKED BY RW	DATE 1988/04/08	
		1 PLACE ± 0.35 ± ---	0 PLACE ± --- ± ---	APPROVED BY FSMITH		DATE 2014/06/23	
ANGULAR ±1/2°		MATERIAL NO.		DOCUMENT NO.	SHEET NO.		
Z4	REV	DRAFT WHERE APPLICABLE MUST REMAIN WITHIN DIMENSIONS		SEE CHART		SD-1396-*	2 OF 2
THIS DRAWING CONTAINS INFORMATION THAT IS PROPRIETARY TO MOLEX INCORPORATED AND SHOULD NOT BE USED WITHOUT WRITTEN PERMISSION							