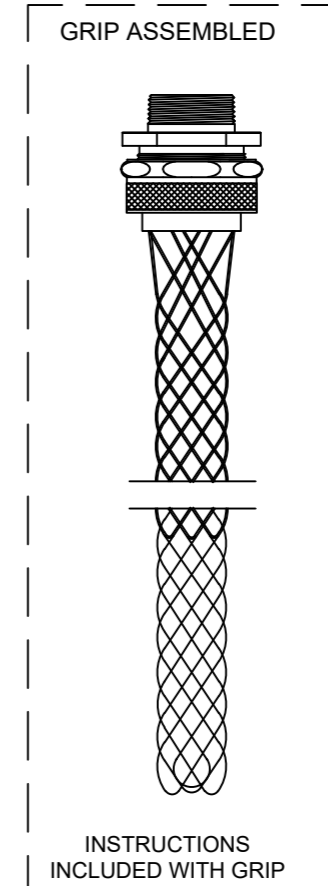
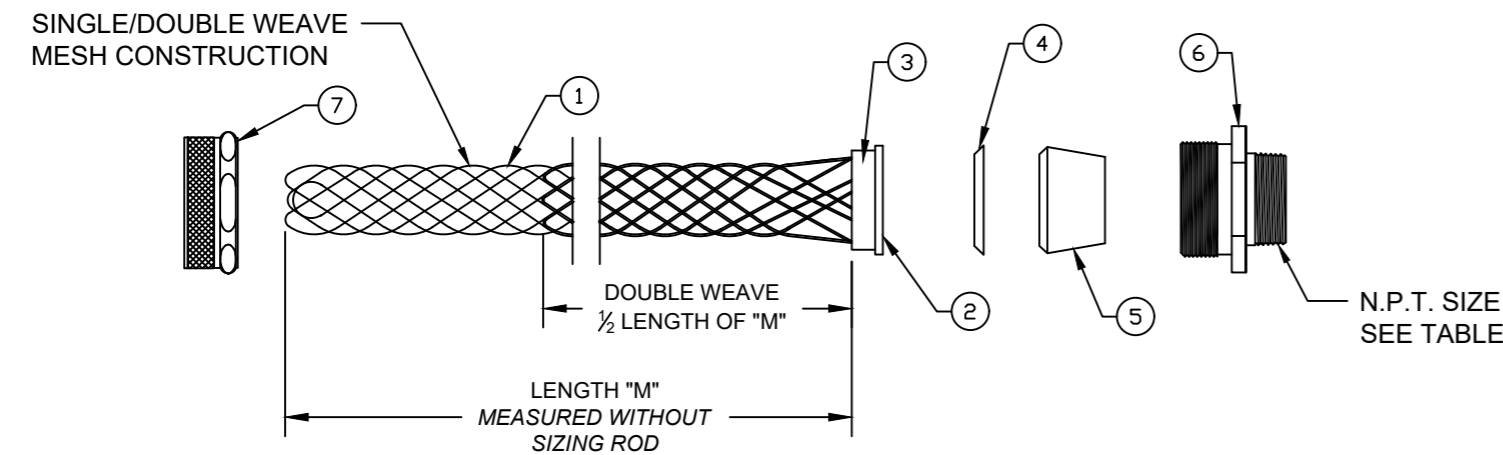


CATALOG NUMBER	MATERIAL NUMBER	CABLE RANGE	LENGTH "M"	N.P.T. FITTING SIZE	FORM SIZE	UL LISTED	CSA APPROVED	PRODUCT SELECTION NUMBER
36490	1300970250	.187-.250 / 4.75-6.35	4.250±0.500 / 107.95±12.70	3/8	1			PG304
36430	1300970225	.250-.312 / 6.35-7.92	4.250±0.500 / 107.95±12.70					PG305
36431	1300970226	.312-.375 / 7.92-9.53	4.250±0.500 / 107.95±12.70					PG306
36432	1300970227	.375-.437 / 9.53-11.10	5.500±0.500 / 139.70±12.70					PG307
36250	1300970160	.187-.250 / 4.75-6.35	4.250±0.500 / 107.95±12.70	1/2	2			PG404
36251	1300970161	.250-.375 / 6.35-9.53	4.250±0.500 / 107.95±12.70					PG406
36254	1300970163	.375-.500 / 9.53-12.70	6.250±0.500 / 158.75±12.70				PG408	
36256	1300970165	.500-.625 / 12.70-15.88	6.500±0.500 / 165.10±12.70				PG410	
36245	1300970156	.625-.750 / 15.88-19.05	8.500±1.000 / 209.55±25.40	3	---	---		PG412
36246	1300970157	.750-.875 / 19.05-22.23	9.250±1.000 / 234.95±25.40		---	---		PG414
36247	-----	.187-.250 / 4.75-6.35	4.250±0.500 / 107.95±12.70	3/4	2	---	---	PG604
36257	1300970166	.250-.375 / 6.35-9.53	4.250±0.500 / 107.95±12.70					PG606
36259	1300970167	.375-.500 / 9.53-12.70	6.250±0.500 / 158.75±12.70				PG608	
36261	1300970168	.500-.625 / 12.70-15.88	6.250±0.500 / 158.75±12.70		3			PG610
36263	1300970170	.625-.750 / 15.88-19.05	8.500±1.000 / 209.55±25.40				PG612	
36248	1300970158	.750-.875 / 19.05-22.23	9.250±1.000 / 234.95±25.40	4	---	---		PG614
36249	1300970159	.437-.562 / 11.10-14.27	5.750±0.500 / 146.05±12.70		---	---		PG808
36275	1300970179	.562-.687 / 14.27-17.45	6.500±0.500 / 165.10±12.70	1	4	---		PG810
36265	1300970171	.625-.750 / 15.88-19.05	8.500±1.000 / 209.55±25.40					PG812
36267	1300970172	.750-.875 / 19.05-22.23	9.250±1.000 / 234.95±25.40				PG814	
36269	1300970173	.875-1.000 / 22.23-25.40	8.125±1.000 / 206.38±25.40		5	---	---	
36270	1300970174	1.000-1.125 / 25.40-28.58	9.000±1.000 / 228.60±25.40	---		---		PG818
36276	1300970180	1.125-1.250 / 28.58-31.75	10.000±1.000 / 254.00±25.40	---		---		PG820



ITEM	DESCRIPTION	MATERIAL
1	WIRE MESH	STAINLESS STEEL
2	INNER RING	ALUMINUM
3	OUTER RING	ALUMINUM
4	FRICTION RING	ZINC PLATED STEEL
5	GROMMET	RUBBER
6	THREADED BODY	ALUMINUM
7	COMPRESSION NUT	ALUMINUM



FUNCTIONAL SYMBOLS	THIS DRAWING CONTAINS INFORMATION THAT IS PROPRIETARY TO MOLEX ELECTRONIC TECHNOLOGIES, LLC AND SHOULD NOT BE USED WITHOUT WRITTEN PERMISSION										
	DIMENSION UNITS		SCALE		CURRENT REV DESC: UPDATE CABLE RANGE FOR 36249 AND 36275 NUMBERS						 STRAIN RELIEF DELUXE STRAIGHT MALE 3/8" TO 1" N.P.T.
	INCH/MM		NTS		GENERAL TOLERANCES (UNLESS SPECIFIED)						
	F=0		E=0		mm		INCH				
E=0		E=0		4 PLACES ±---		±---					
DIVISIONAL SYMBOLS	3 PLACES ±---		±0.005		EC NO: 699853						
	2 PLACES ±0.13		±0.01		DRWN: VOU		2022/03/16				
	1 PLACE ±0.25		±0.02		CHK'D: DACHAMMER		2022/03/21				
	0 PLACES ±---		±---		APPR: HKNEELAND		2022/03/25				
ANGULAR TOL ± 0.5 °				INITIAL REVISION:		DRWN: HRUIZ01				2014/10/20	
DRAFT WHERE APPLICABLE MUST REMAIN WITHIN DIMENSIONS				APPR: JFMURPHY		2016/05/04				2016/05/04	
THIRD ANGLE PROJECTION		DRAWING		SERIES		MATERIAL NUMBER		CUSTOMER		SHEET NUMBER	
		B-SIZE		130097		SEE TABLE		GENERAL MARKET		1 OF 1	