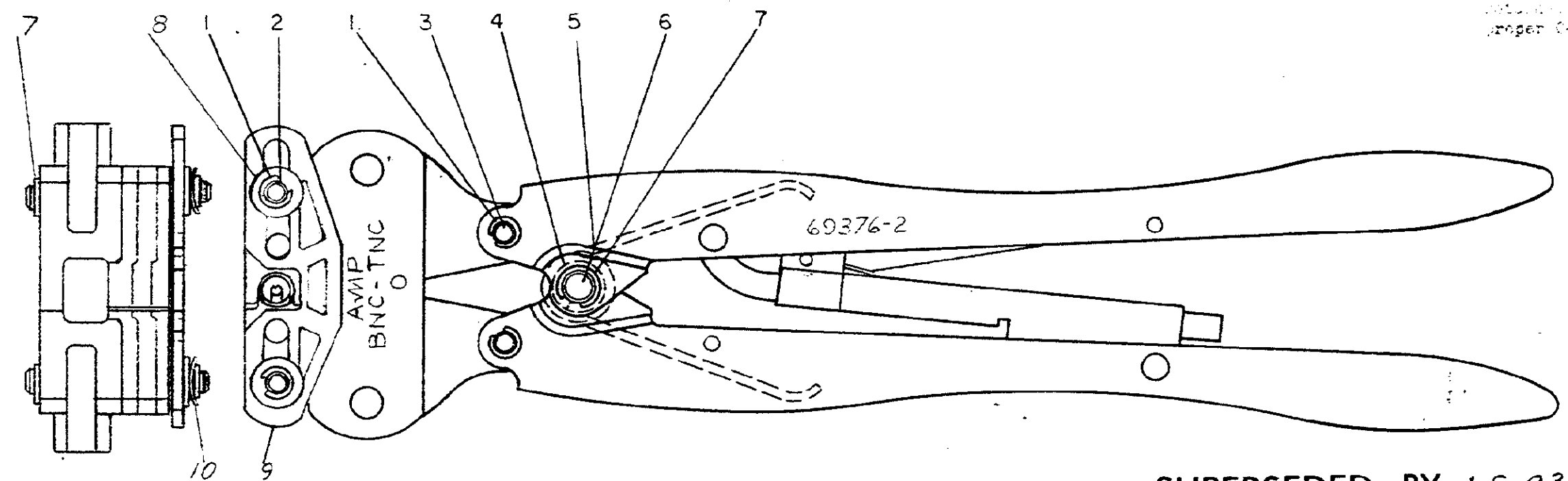


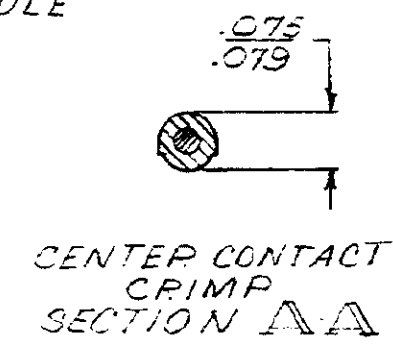
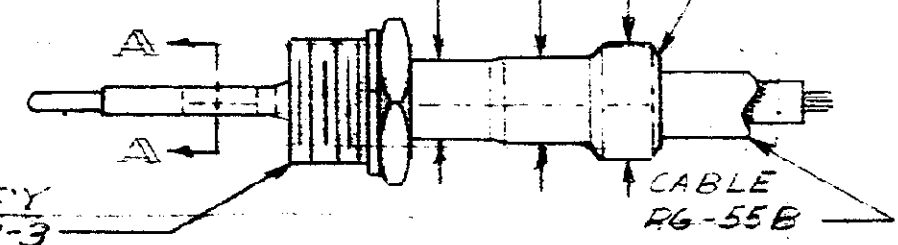
Use the correct part after
 adjustment to 1500
 proper Crimp-Crimp adjustment



SUPERSEDED BY 15 2349

INSULATION CRIMP $\frac{.224}{.238}$.310 GASKET CRIMP
 .333

BRAID CRIMP $\frac{.211}{.221}$



PLUG ASSY
 #2-330953-3

METHOD OF GAGING CRIMP DIMS
 THE CRIMP DIMS APPLY ONLY
 TO THE ABOVE COMBINATIONS
 ON A CRIMPED PRODUCT.

2	24058-6	CURVED WASHER	10
1	307089-2	LOCATOR	9
2	125115-1	WASHER	8
4	21045-6	RING - RETAINING	7
1	300449	PIN - RETAINING	6
1	39364	SPRING	5
1	39366	COLLAR	4
2	58183	PIN - RETAINING	3
2	1-306055-3	PIN - RETAINING	2
6	21045-3	RING - RETAINING	1

PRINTED BY 12887 10/67
 DIMENSIONS IN INCHES DO NOT SCALE PRINT
 18
 F-1

REV	DESCRIPTION	DATE	BY	CHK
E1	SUP BY 15 2349	8-30-67	PL	
E	REVISED	8-21-67	PL	
D	REVISED	8-21-67	BS	
C	REVISED	8-21-67	PL	
B	REVISED	8-21-67	PL	
A	REVISED	8-21-67	BS	

NO	DESCRIPTION	REQUIRE PER ASSEMBLY
69376-2		

©1967 BY AMP INCORPORATED. ALL RIGHTS RESERVED
 AMP PRODUCTS COVERED BY PATENTS AND/OR PATENTS PENDING.

DR: *Ch. Flaynick 3-16-67*
 CHK: *R. J. Hughes 3-29-67*
 DE: *R. J. Hughes*
 APP: *E. J. ... 4-10-67*

MATERIAL AND FINISH: _____

WIRE - RANGE - INSULATION: R6-55 B

TOLERANCE EXCEPT AS NOTED: .015 ± 1° 0

SCALE: 1-1

LOC: M

NO: 69376-2

TYPE: BNC-TNC

CLASS: _____

NAME: **HAND TOOL ASSEMBLY**

8 7 6 5 4 3 2 1