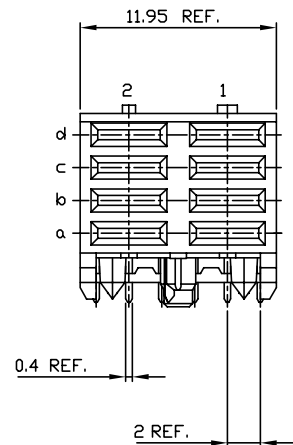
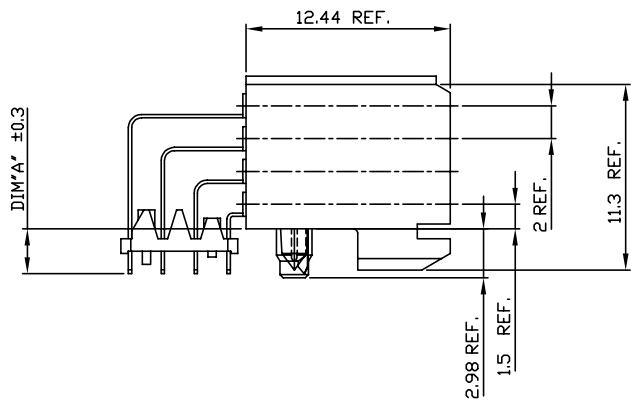


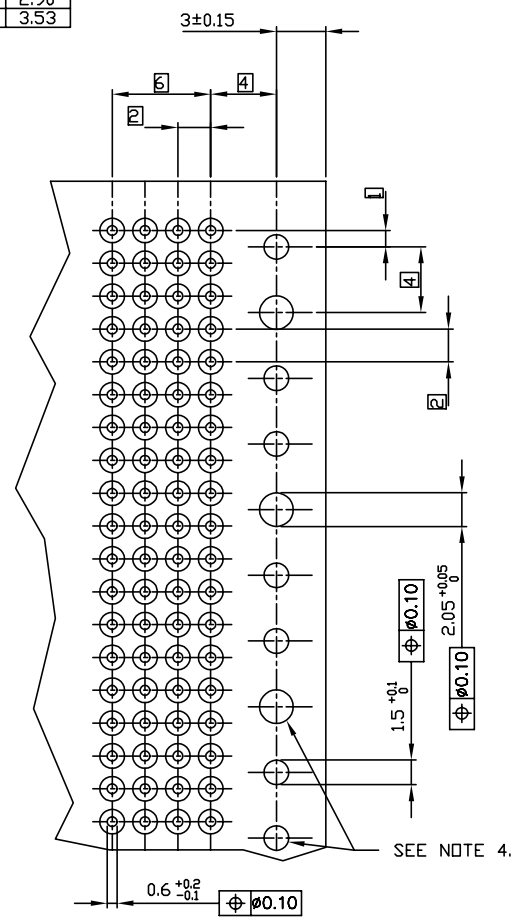
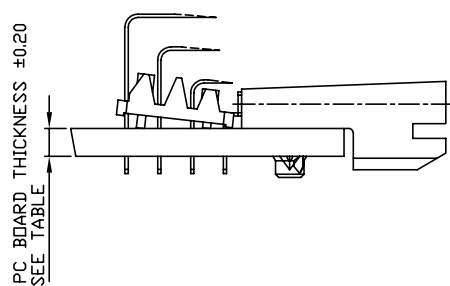
PLATING CONTACT AREA:	
DASH NR:	PERFORMANCE LEVEL
-1YY	TELCORDIA CO
-2YY	CUSTOMER SPECIAL
-3YY	CUSTOMER SPECIAL
-4YY	CUSTOMER SPECIAL
-5YY	TELCORDIA CO
-6YY	CUSTOMER SPECIAL
-7YY	TELCORDIA CO
-8YY	TELCORDIA CO
-9YY	TELCORDIA CO
-1YYL	TELCORDIA CO
-2YYL	CUSTOMER SPECIAL
-3YYL	CUSTOMER SPECIAL

OBSOLETE
OBSOLETE
OBSOLETE
OBSOLETE
OBSOLETE
OBSOLETE
OBSOLETE
OBSOLETE

PC BOARD VERSIONS		
PRODUCTNR:	PCB THICKNESS	DIM"A"
89039-X01LF	1.6	2.90
89039-X11LF	2.4	3.53



PRODUCT AFTER PC BOARD APPLICATION.



SEE NOTE 4.

RECOMMENDED HOLE PATTERN, COMPONENT SIDE.

NOTES:

- BODY MAT'L: LIQUID CRYSTAL POLYMER 30% GLASS
FLAME RETARDANT ACC. UL 94-V0
- TERMINAL MATERIAL: PHOSPHOR BRONZE.
- INDICATED HOLES ARE UNPLATED.
- PRODUCT MARKING: PARTNUMBER & BATCH ID.
- THIS PRODUCT MEETS EUROPEAN UNION DIRECTIVES AND OTHER COUNTRY REGULATIONS AS DESCRIBED IN GS-22-008
- THE HOUSING WILL WITHSTAND EXPOSURE TO 260DEGREE PEAK TEMPERATURE FOR 10 SECONDS IN A WAVE SOLDER APPLICATION.
- THE PRODUCT SPECIFICATION GS-12-453.

mat'l. code				tolerances unless otherwise specified			CUSTOMER COPY	FCI www.fciconnect.com
ltr	ecn no	dr	date	linear	0.X	±0.30	projection	
H	DG04-0104	CLU	2004-12-23		0.XX	±0.15		
J	DG07-0458	CEN	2007-11-15	angles	0.XXX	±0.05	product family METRAL	code size dwg no 89039
K	DG08-0171	TER	2008-08-26		0'	±2'		
L	N11-0131	A.ZH	2011-05-09	dr	H.BOUWKNEGT	1993-03-05	scale 5:1	sheet 1 of 2
M	ELX-N-004585	A.ZH	2011-07-20	enr	H.BOUWKNEGT	1993-03-05		
N	ELX-N-006420	A.ZH	2011-09-29	chr	J.WINTJES	1993-03-05		
				appd	H.BOUWKNEGT	1993-03-05		
sheet index	revision sheet	N	1-2					



Copyright FCI.

