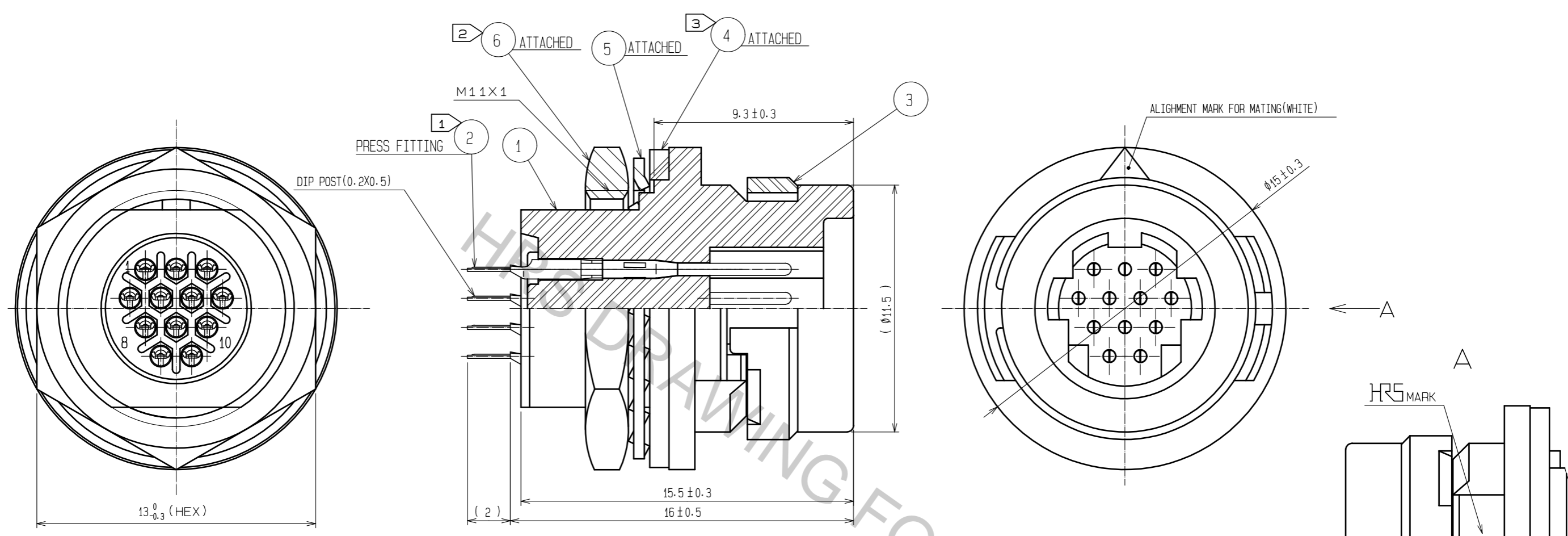


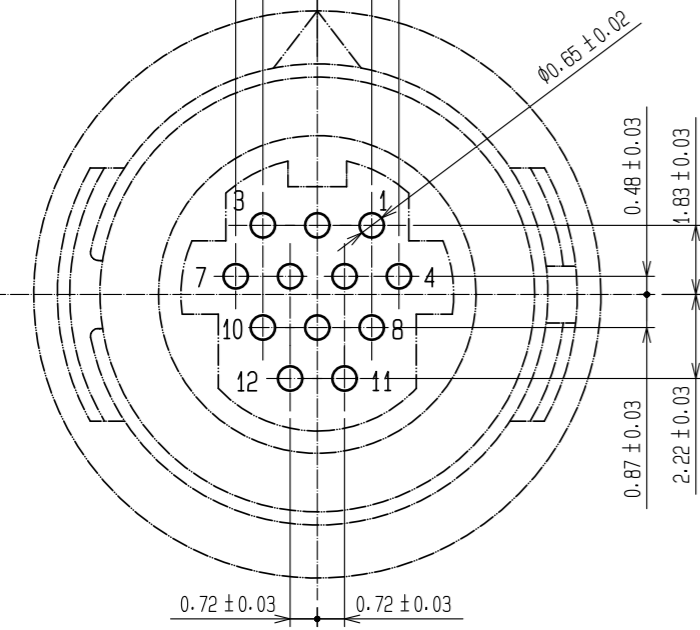
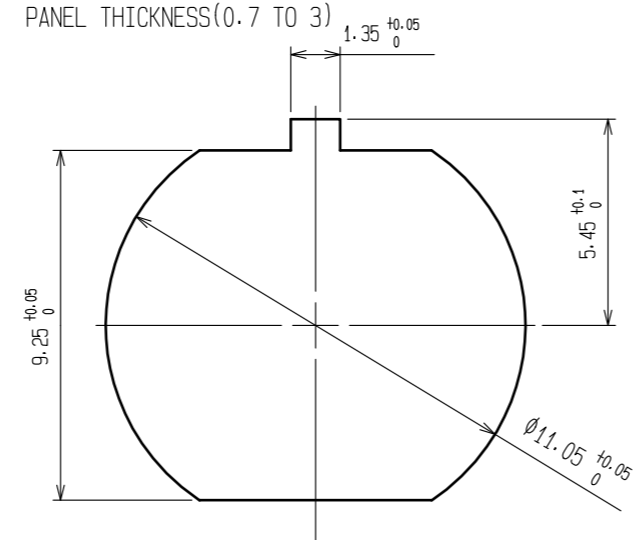
Aug.1.2018 Copyright 2018 HIROSE ELECTRIC CO., LTD. All Rights Reserved.
 In case that the application demands a high level of reliability, such as automotive,
 please contact a company representative for further information.



DIP POST LOCATION DIMENSIONS IN THE VIEW
 FROM CONNECTOR OPENING SIDE
 (RECOMMENDED MAXIMUM PANEL THICKNESS : 1.2)



PANEL INSTALLATION HOLE
 PANEL THICKNESS(0.7 TO 3)



- NOTES
- ① FINISH OF REF.NO. ②
 CONTACT AREA : GOLD 0.2μm min.
 DIP AREA : GOLD FLASH.
 UNDER PLATING: NICKEL 2μm min.
 - ② RECOMMENDED TIGHTENING TORQUE OF REF.NO. ⑥ : 0.8 N·m.
 LOOSENED NUT MAY CAUSE THE DETERIORATION OF WATER-RESISTANCY.
 THE USE OF LOOSENING-PREVENTIVE ADHESIVE IS STRONGLY RECOMMENDED.
 RECOMMENDED THREAD LOCKER : LOCTITE 263 , LOCKPRIMER 7649, HENKEL JAPAN LTD.
 - ③ AFTER REF.NO. ④ IS INSERTED TO REF.NO. ① ,
 REF.NO. ① IS MOUNTED ON THE PANEL.
 MAKE SURE THAT REF.NO. ④ DOES NOT HAVE ANY FACTORS TO REDUCE WATER-RESISTANCY,
 SUCH AS SCRATCH, TWIST, PINCHING, OR DUST.

3	PPS	(BLACK) UL94V-0	6	BRASS	NICKEL PLATING
2	COPPER ALLOY	①	5	PHOSPHOR BRONZE	NICKEL PLATING
1	PPS	(BLACK) UL94V-0	4	CR	(BLACK)
NO.	MATERIAL	FINISH . REMARKS	NO.	MATERIAL	FINISH . REMARKS
UNITS mm		SCALE 5 : 1	COUNT		DESCRIPTION OF REVISIONS
DESIGNED		CHECKED		DATE	
APPROVED : HY. KOBAYASHI			18.02.26		
CHECKED : HY. KOBAYASHI			18.02.26		
DESIGNED : DS. MATSUNE			18.02.26		
DRAWN : DS. MATSUNE			18.02.26		
DRAWING NO.		EDC-113454-31-00			
PART NO.		HR30-7R-12PD(31)			
CODE NO.		CL130-1017-9-31			
				①/1	