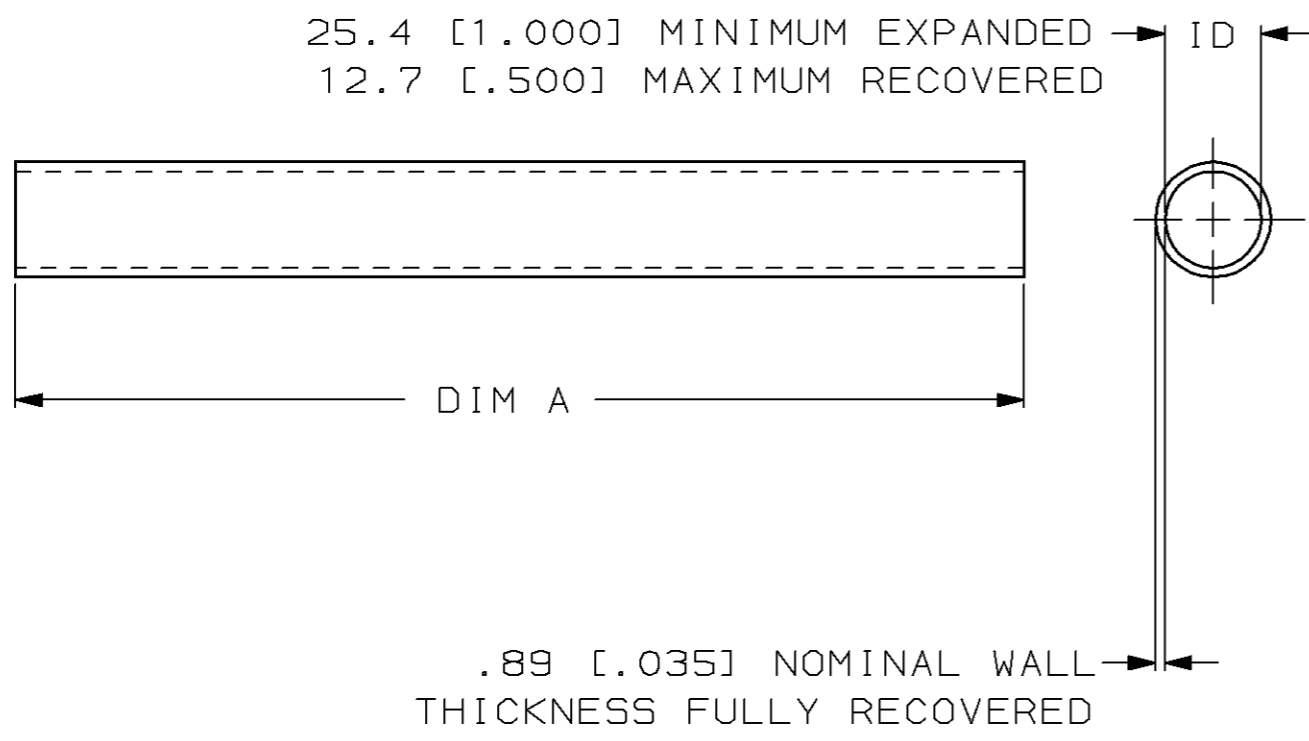


THIS DRAWING IS UNPUBLISHED. RELEASED FOR PUBLICATION, 19
 © COPYRIGHT 19 BY AMP INCORPORATED. ALL INTERNATIONAL RIGHTS RESERVED.

| LOC | DIST | P | F | ZONE | LTR | REVISIONS | DATE | APPD |
|-----|------|---|---|------|-----|----------------------|--------|----------|
| EY | 25 | | | | F | REV; EC 0230-0240-94 | 7-7-94 | WC DH |



- TUBING MEETS REQUIREMENTS OF MIL-I-23053/5-110-0.
- △ WEIGHT PER LINEAR FOOT: 304.8 mm: 12.47 GRAMS/ .027 POUND.

| | | |
|---|-------------------------|--|
| 60.96 m [200 FEET] MINIMUM | | 1-603338-1 |
| 1.22 m [4 FEET] MINIMUM | | 1-603338-0 |
| 50.8 ±1.27 [2.00 ±.05] | | 603338-4 |
| DIM A | | PART NO |
| DO NOT SCALE PRINT. UNLESS SPECIFIED DIMENSIONS IN mm [INCHES] TOLERANCES ON: 2 PLC DEC ± - 3 PLC DEC ± - ANGLES ± - | DR 7-7-94 W CHANDLER | AMP Incorporated Harrisburg, PA 17105-3608 NAME AMPSULATION FP21 1.00 INCH ID, BLACK |
| | CHK 1-25-95 D HUSSEY | |
| | APPD 2-1-95 D KAAT | |
| | APPD 2-1-95 F HARNED | |
| MATERIAL BLACK POLYOLEFIN | PRODUCT SPEC - | SIZE B |
| FINISH - | APPLICATION SPEC - | CAGE CODE 00779 |
| | WEIGHT △ | DRAWING NO C-603338 |
| | | SCALE NONE |
| | | SHEET 1 OF 1 |

THIS DRAWING IS A CONTROLLED DOCUMENT FOR AMP INCORPORATED. IT IS SUBJECT TO CHANGE AND THE CONTROLLING ENGINEERING ORGANIZATION SHOULD BE CONTACTED FOR THE LATEST REVISION.