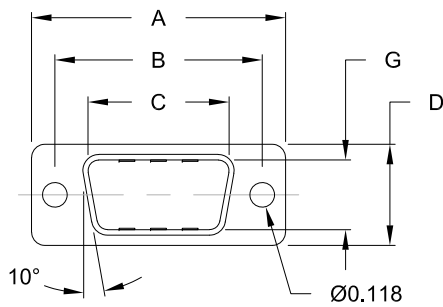
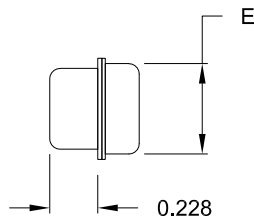


TOP VIEW



FRONT VIEW



SIDE VIEW



BACK VIEW
SHOWN FOR CLARITY

MATERIAL

SHELL: 4-7µ" TIN PLATED DC04 STEEL

DIMENSIONS (IN.)

No. OF PINS	A	B	C	D	E	F	G
9	1.205	0.984	0.669	0.480	0.429	0.760	0.331
15	1.535	1.311	0.996	0.480	0.429	1.083	0.331
25	2.079	1.850	1.535	0.480	0.429	1.630	0.331
37	2.724	2.500	2.181	0.480	0.429	2.278	0.331
50	2.622	2.406	2.083	0.598	0.535	2.182	0.438

CFYYP

SERIES _____
 POSITIONS _____
 09
 15
 25
 37
 50
 GENDER _____
 P = MALE

****NOTE: COVER IS USED TO MATE/COVER FEMALE CONNECTORS**

RoHS COMPLIANT

UNITS = inch

DO NOT SCALE FROM DRAWING



THESE DRAWINGS AND SPECIFICATIONS ARE THE PROPERTY OF NorComp AND SHALL NOT BE REPRODUCED, COPIED OR USED AS THE BASIS FOR THE MANUFACTURE OR SALE OF APPARATUS WITHOUT WRITTEN PERMISSION.

DRAWN:
C. SMITH
DATE:
01/17/2008

NorComp

SCALE: NTS	SHEET 1	OF 1	REV 5
DWG NO. CFYYP			