

DO NOT SCALE FROM THIS PRINT

NOTES:

1. MINIMUM PUSHOUT FORCE: .5 LB.
2. NOTE DELETED.
3. \odot REPRESENTS A CRITICAL DIMENSION.
4. NOTE DELETED.
5. DUE TO THE HIGH AMOUNT OF INSERTION FORCE NEEDED, THE -LC OPTION IS NOT COMPATIBLE WITH AUTO PLACEMENT. SAMTEC RECOMMENDS MANUAL PLACEMENT FOR ALL ASSEMBLIES WITH THE -LC OPTION.
6. TO BE MEASURED FROM A DATUM LINE MADE BY THE INSULATOR.
7. TUBES ARE STANDARD PACKAGING.
8. ORDERS WILL BE PACKAGED ACCORDING TO THE SAMTEC PACKAGING EFFICIENCY STANDARDS (SPES) FOUND ON WWW.SAMTEC.COM.
9. ATTACH LABEL TO EACH REEL.

SFMH-1XX-XX-XXX-D-XX-XX

No OF POSITIONS PER ROW
-05 THRU -50

LEAD STYLE
-02

PACKAGING
BLANK: TUBES (SEE NOTE 7)
-TR: TAPE & REEL (SEE NOTES 8 & 9)
-FR: FULL REEL QTY TAPE & REEL (SEE NOTES 8 & 9)

OPTIONS
-LC: LOCKING CLIP (SEE FIG 1, SHT 1)
(NOT AVAILABLE W/ -WT OPTION)
(SEE NOTE 5)
*-SL: SOLDER LOCK (SEE FIG 2, SHT 2)
-WT: WELD TAB (SEE FIG. 3, SHT 2)
(NOT AVAILABLE W/ -LC OPTION)
(AVAILABLE ON POSITIONS -05 THRU -30)

ROW SPECIFICATION
-D: DOUBLE ROW

- PLATING SPECIFICATION
(VALUES GIVEN ARE IN MICRO-INCHES)
- L: 10 μ " GOLD IN CONTACT AREA, GOLD FLASH ON TAIL (USE C-108-G & C-109-G)
 - F: 3 μ " GOLD IN CONTACT AREA, GOLD FLASH ON TAIL (USE C-108-FG & C-109-FG)
 - S: 30 μ " GOLD IN CONTACT AREA, MATTE TIN ON TAIL (USE C-108-S & C-109-S)
 - LM: 10 μ " GOLD IN CONTACT AREA, MATTE TIN ON TAIL (USE C-108-LM & C-109-LM)
 - STL: 30 μ " GOLD IN CONTACT AREA, TIN/LEAD ((90/10+/-5%)TAIL (USE C-108-STL & C-109-STL)
 - FTL: 3 μ " GOLD IN CONTACT AREA, TIN/LEAD (90/10+/-5%) TAIL (USE C-108-FTL & C-109-FTL)
 - LTL: 10 μ " GOLD IN CONTACT AREA, TIN/LEAD (90/10+/-5%) TAIL (USE C-108-LTL & C-109-LTL)
- SEE PP-C-108-XXX & PP-C-109-XXX FOR PLATING DETAILS.

(* = NOT TOOLED)

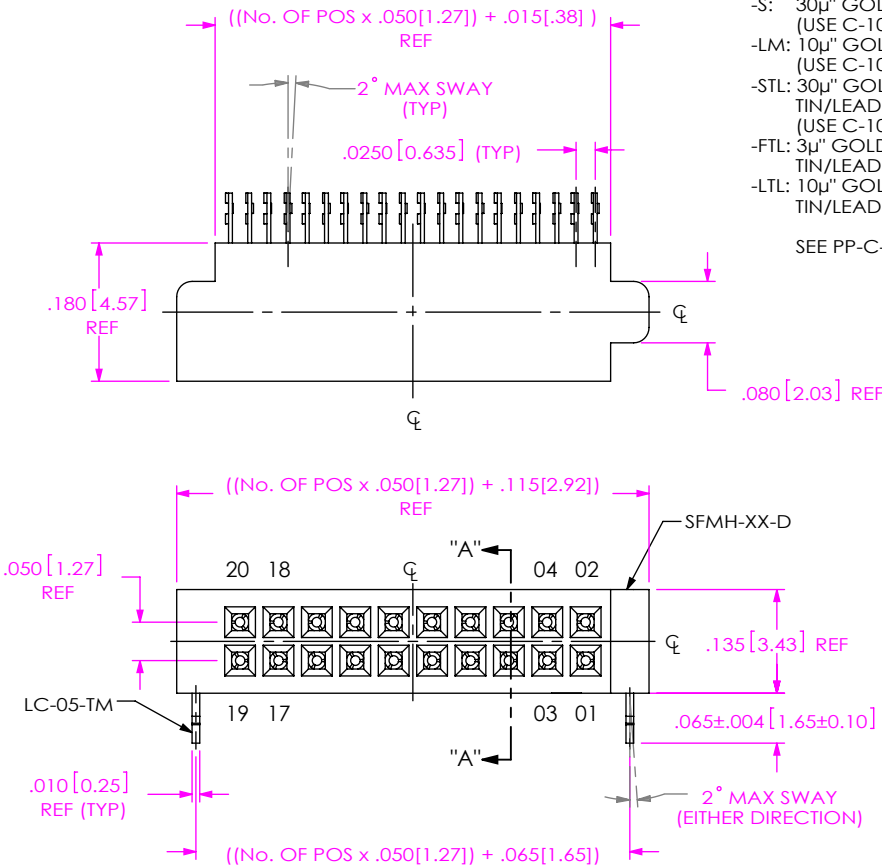


FIG 1
SFMH-110-02-XXX-D-LC SHOWN

UNLESS OTHERWISE SPECIFIED, DIMENSIONS ARE IN INCHES.

TOLERANCES ARE:

DECIMALS	ANGLES
.XX: $\pm .01$ [.3]	$\pm 5^\circ$
.XXX: $\pm .005$ [.13]	
.XXXX: $\pm .0020$ [.051]	

PROPRIETARY NOTE
THIS DOCUMENT CONTAINS CONFIDENTIAL AND PROPRIETARY INFORMATION AND ALL DESIGN, MANUFACTURING, REPRODUCTION, USE, PATENT RIGHTS AND SALES RIGHTS ARE EXPRESSLY RESERVED BY SAMTEC, INC. THIS DOCUMENT SHALL NOT BE DISCLOSED, IN WHOLE OR PART, TO ANY UNAUTHORIZED PERSON OR ENTITY NOR REPRODUCED, TRANSFERRED OR INCORPORATED IN ANY OTHER PROJECT IN ANY MANNER WITHOUT THE EXPRESS WRITTEN CONSENT OF SAMTEC, INC.

MATERIAL: DO NOT SCALE DRAWING SHEET SCALE: 2:1
INSULATOR: LCP, UL 94 VO, COLOR: BLACK
CONTACT: PHOS BRONZE



520 PARK EAST BLVD, NEW ALBANY, IN 47150
PHONE: 812-944-6733 FAX: 812-948-5047
e-Mail: info@SAMTEC.com code 55322

DESCRIPTION:
.050 x .050 SOCKET STRIP ASSEMBLY

DWG. NO.
SFMH-1XX-XX-XXX-D-XX-XX

BY: J. BROWNING 12/07/2009 SHEET 1 OF 3

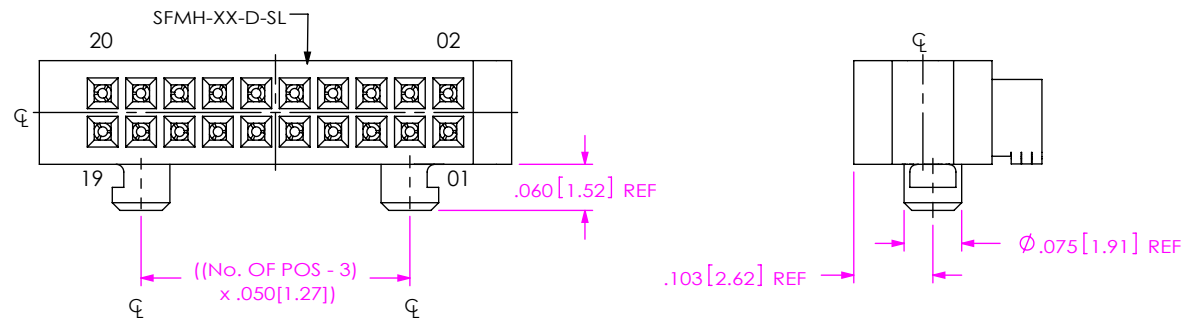
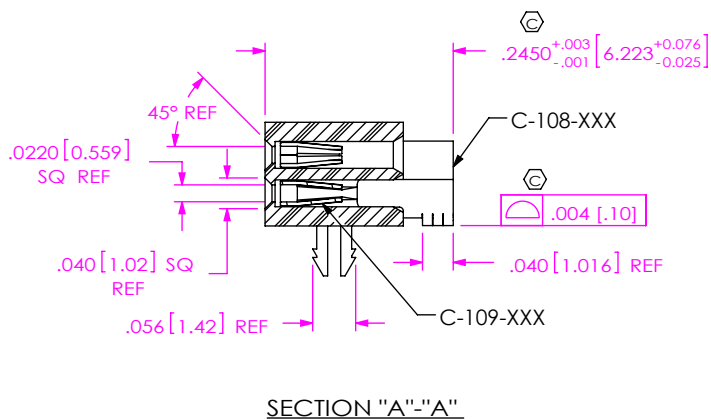


FIG 2
SFMH-110-02-XXX-D-SL SHOWN
(DIFFERENT AS SHOWN, OTHERWISE SAME AS FIG 1)

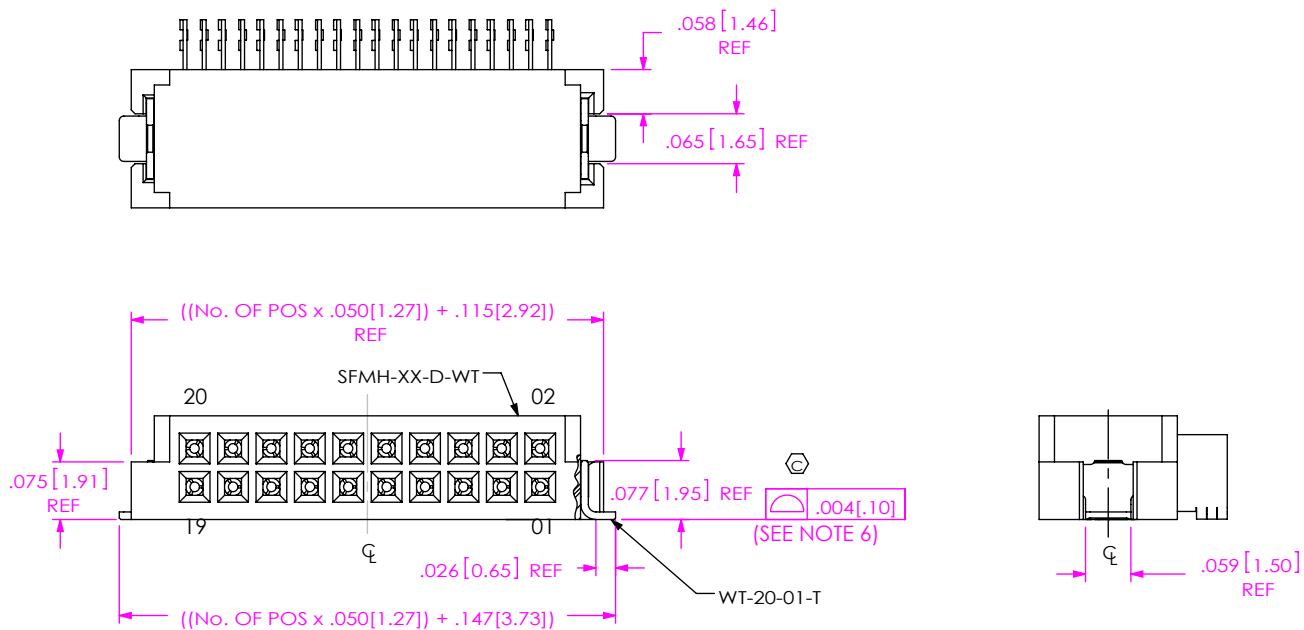


FIG 3
SFMH-110-02-XXX-D-WT SHOWN
(DIFFERENT AS SHOWN, OTHERWISE SAME AS FIG 1)

PROPRIETARY NOTE
THIS DOCUMENT CONTAINS CONFIDENTIAL AND PROPRIETARY INFORMATION AND ALL DESIGN, MANUFACTURING, REPRODUCTION, USE, PATENT RIGHTS AND SALES RIGHTS ARE EXPRESSLY RESERVED BY SAMTEC, INC. THIS DOCUMENT SHALL NOT BE DISCLOSED, IN WHOLE OR PART, TO ANY UNAUTHORIZED PERSON OR ENTITY NOR REPRODUCED, TRANSFERRED OR INCORPORATED IN ANY OTHER PROJECT IN ANY MANNER WITHOUT THE EXPRESS WRITTEN CONSENT OF SAMTEC, INC.

DO NOT SCALE DRAWING

SHEET SCALE: 2:1

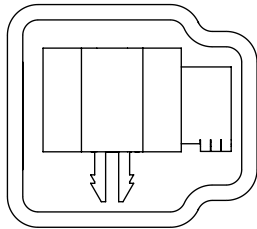


520 PARK EAST BLVD, NEW ALBANY, IN 47150
PHONE: 812-944-6733 FAX: 812-948-5047
e-Mail info@SAMTEC.com code 55322

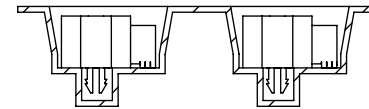
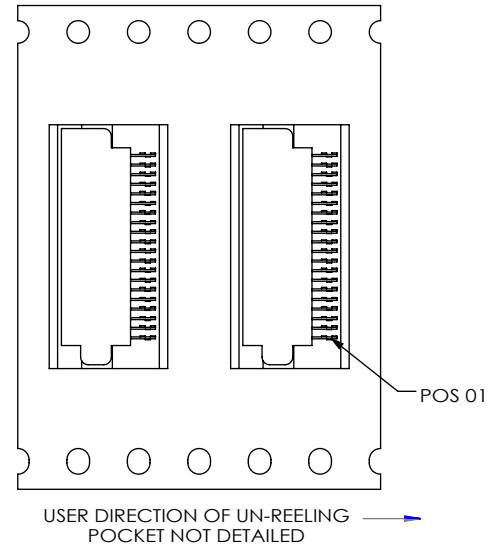
DESCRIPTION:
.050 x .050 SOCKET STRIP ASSEMBLY

DWG. NO.
SFMH-1XX-XX-XXX-D-XX-XX

BY: J. BROWNING 12/07/2009 SHEET 2 OF 3



TUBE VIEW
 USE TUBE PT-1-24-01-38
 USE PLUG TP-24 (2)



TAPE & REEL VIEW

F:\DWG\MISC\Mktg\SFMH-1XX-XX-XXX-D-XX-XX-MKT.SLDDRW

PROPRIETARY NOTE
 * THIS DOCUMENT CONTAINS CONFIDENTIAL AND PROPRIETARY INFORMATION AND ALL DESIGN, MANUFACTURING, REPRODUCTION, USE, PATENT RIGHTS AND SALES RIGHTS ARE EXPRESSLY RESERVED BY SAMTEC, INC. THIS DOCUMENT SHALL NOT BE DISCLOSED, IN WHOLE OR PART, TO ANY UNAUTHORIZED PERSON OR ENTITY NOR REPRODUCED, TRANSFERRED OR INCORPORATED IN ANY OTHER PROJECT IN ANY MANNER WITHOUT THE EXPRESS WRITTEN CONSENT OF SAMTEC, INC.
 DO NOT SCALE DRAWING
 SHEET SCALE: 2:1



520 PARK EAST BLVD, NEW ALBANY, IN 47150
 PHONE: 812-944-6733 FAX: 812-948-5047
 e-Mail info@SAMTEC.com code 55322

DESCRIPTION: .050 x .050 SOCKET STRIP ASSEMBLY

DWG. NO. SFMH-1XX-XX-XXX-D-XX-XX

BY: J. BROWNING 07/2009 SHEET 3 OF 3