

# Customer Information Sheet

DRAWING No.: M20-890XX05R

SHEET 2 OF 2

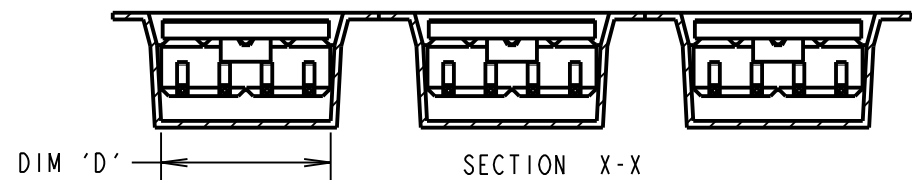
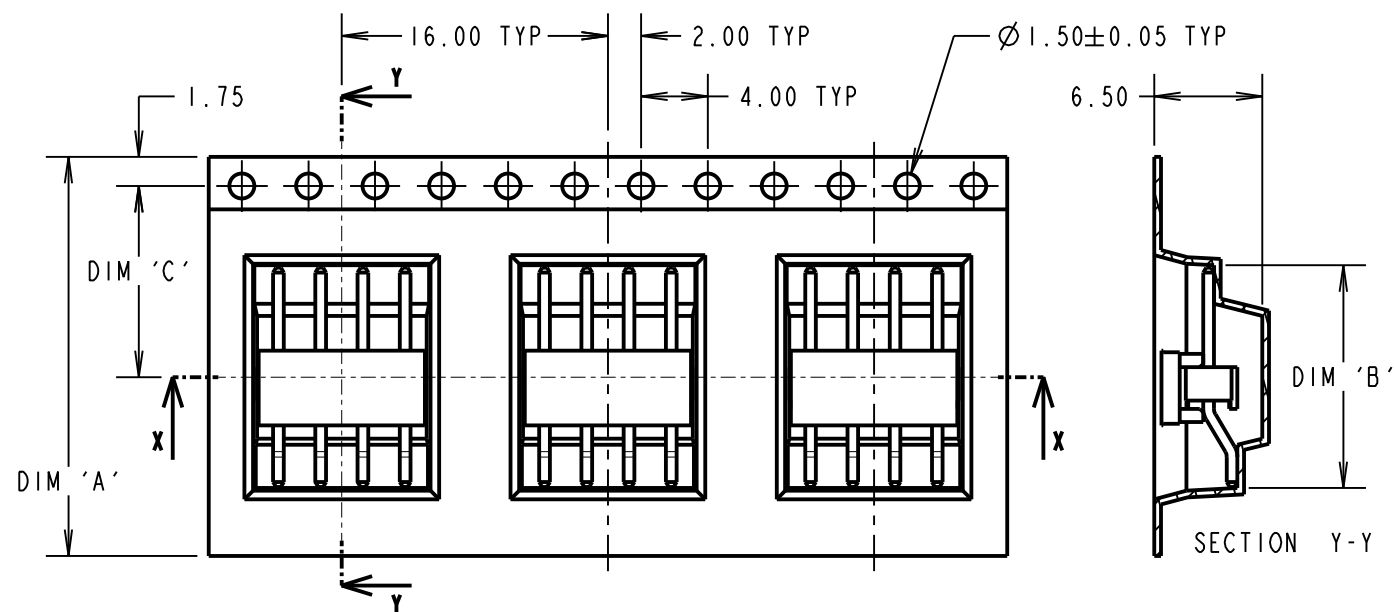
IF IN DOUBT - ASK

©

NOT TO SCALE

THIRD ANGLE PROJECTION

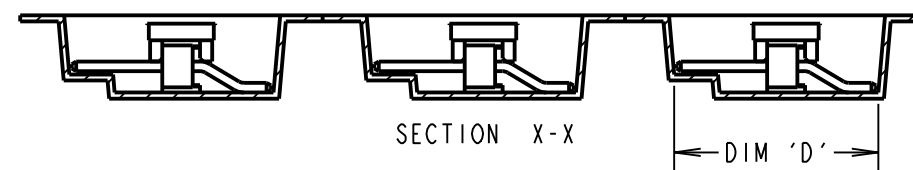
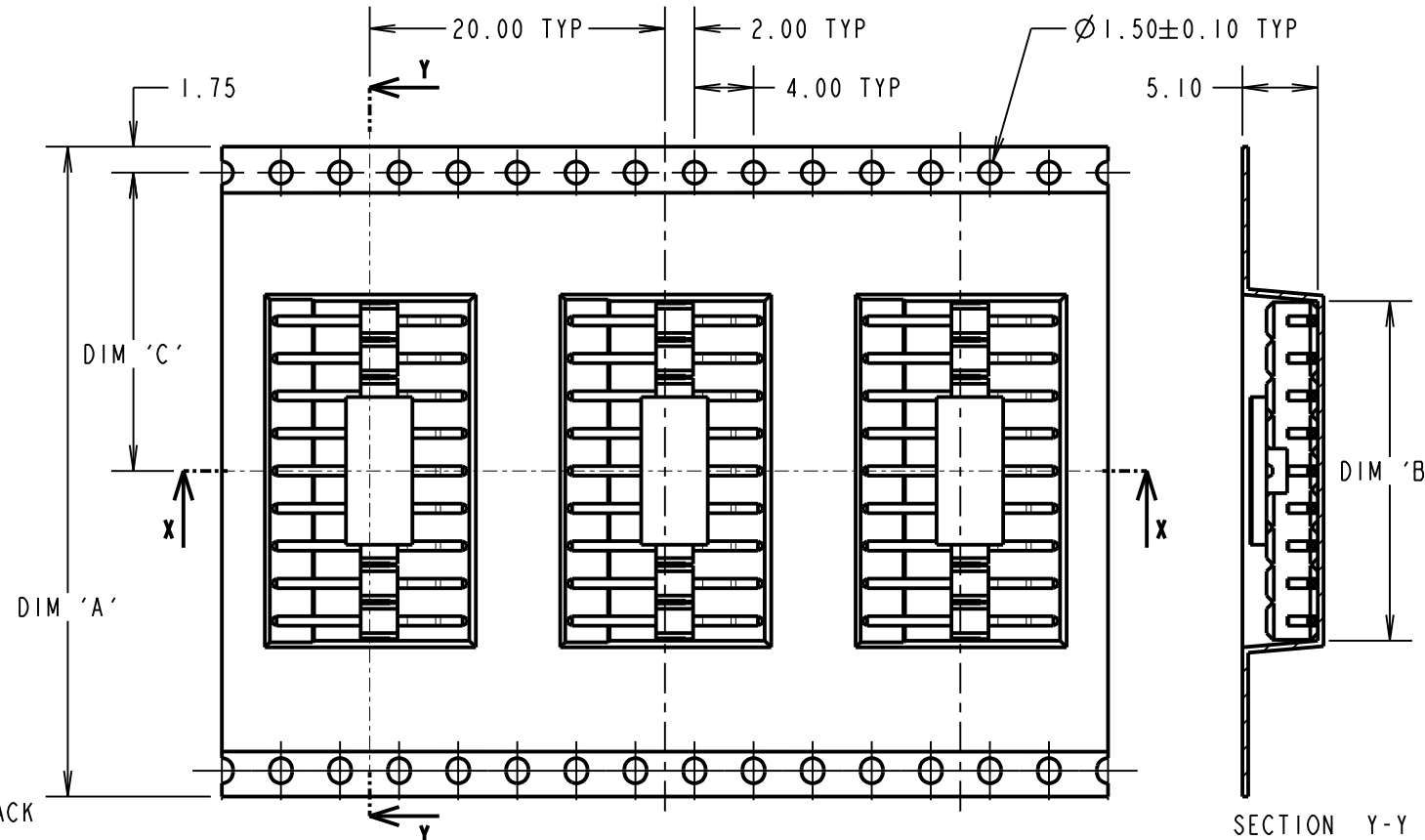
ALL DIMENSIONS IN mm



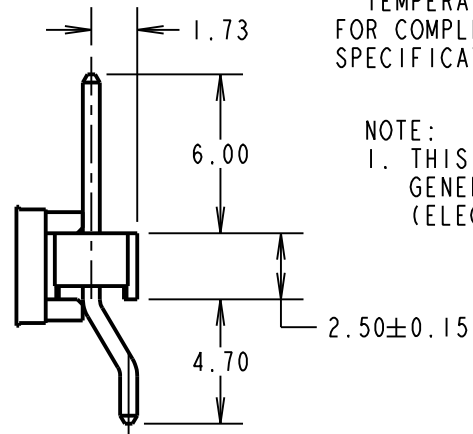
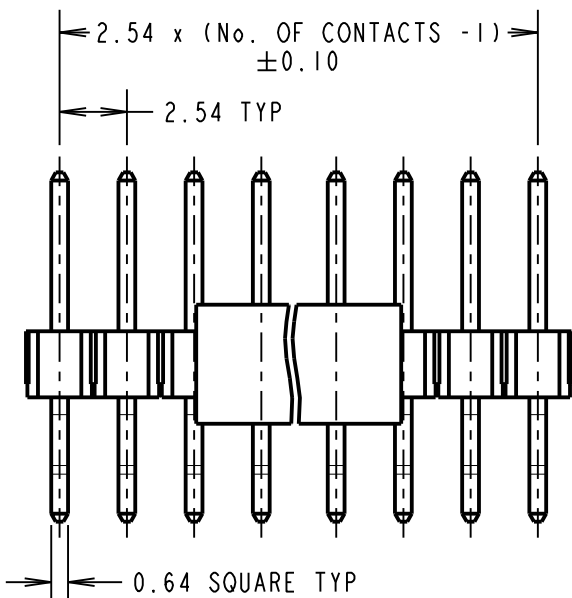
**TAPE DETAILS FOR:  
04 WAY**

**SPECIFICATION:**  
**MATERIAL:**  
 MOULDING = NYLON 6T UL94V-0, BLACK  
 CONTACT = BRASS  
**FINISH:**  
 CONTACT = GOLD FLASH OVER NICKEL  
**ELECTRICAL:**  
 CURRENT RATING = 3.0A  
 CONTACT RESISTANCE = 20mΩ MAX  
 INSULATION RESISTANCE = 5000MΩ MIN  
 DIELECTRIC STRENGTH = 500V AC FOR ONE MIN  
**ENVIRONMENTAL:**  
 TEMPERATURE RANGE = -40°C TO +105°C  
 FOR COMPLETE SPECIFICATION, SEE COMPONENT SPECIFICATION COOIXX (LATEST ISSUE).

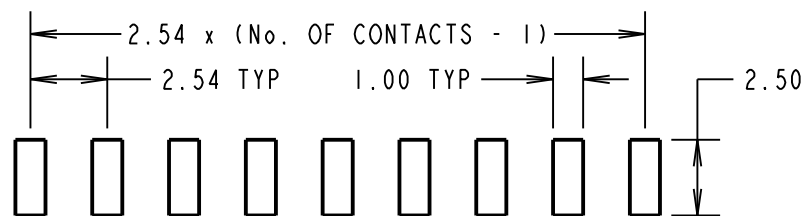
**NOTE:**  
 1. THIS PRODUCT IS TAPE AND REELED IN GENERAL ACCORDANCE WITH EIA-481 (ELECTRONIC INDUSTRIES ASSOCIATION).



**TAPE DETAILS FOR:  
05, 06, 09 & 20 WAY**

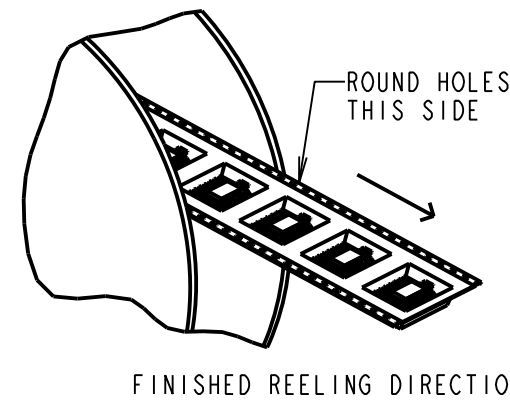


**CONNECTOR DETAILS  
TOLERANCE = ±0.25  
UNLESS STATED**

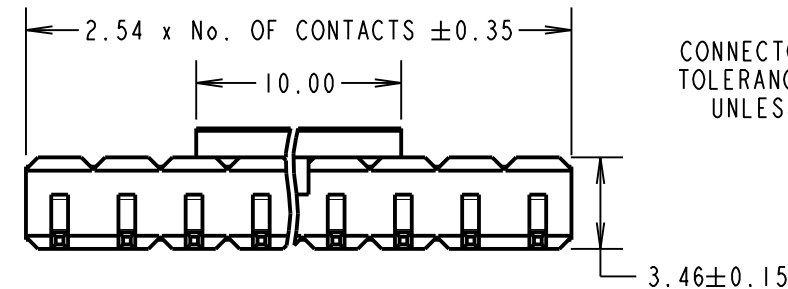


**RECOMMENDED PAD LAYOUT  
TOLERANCE ±0.05**

PART No.	DIM 'A'	DIM 'B'	DIM 'C'	DIM 'D'	DIM 'E'	QUANTITY PER REEL
M20-8900405R	24.0±0.3	13.40±0.30	11.50	10.20±0.30	N/A	600
M20-8900505R		13.15±0.20		13.90±0.20		
M20-8900605R	32.0±0.3	15.54±0.30	14.20	13.50±0.30	28.40	500
M20-8900905R	44.0±0.3	23.00±0.30	20.20		40.40	
M20-8902005R	72.0±0.3	51.20±0.30	34.20	13.80±0.30	68.40	600



FM	5	22.06.18	21364
NAME	ISS.	DATE	C/NOTE
APPROVED:		F.MCGOWAN	
CHECKED:		S.BENNETT	
DRAWN:		S.BENNETT	
CUSTOMER REF.:			
ASSEMBLY DRG:			



**HARWIN**

www.harwin.com  
technical@harwin.com

THIS DRAWING AND ANY INFORMATION OR DESCRIPTIVE MATTER SET OUT HEREON ARE CONFIDENTIAL AND COPYRIGHT PROPERTY OF THE HARWIN GROUP AND MUST NOT BE DISCLOSED, LOANED, COPIED OR USED FOR MANUFACTURING, TENDERING OR FOR ANY OTHER PURPOSE WITHOUT THEIR WRITTEN PERMISSION.

**TOLERANCES**  
 X. = ±1mm  
 X.X = ±0.50mm  
 X.XX = ±0.10mm  
 X.XXX = ±0.01mm  
 ANGLES = ±5°  
 UNLESS STATED

**MATERIAL:**  
SEE ABOVE  
**FINISH:** SEE ABOVE  
**S/AREA:** mm<sup>2</sup>

**TITLE:**  
SIL HORIZONTAL SMT  
HEADER IN TAPE AND REEL  
**DRAWING NUMBER:**  
M20-890XX05R  
 SHT 2 OF 2