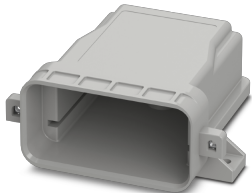


Electronic housing - ECS-B-64X80-S-UV-V GY - 1196941

Please be informed that the data shown in this PDF Document is generated from our Online Catalog. Please find the complete data in the user's documentation. Our General Terms of Use for Downloads are valid (<http://phoenixcontact.com/download>)




Screw locking vented enclosure of the ECS Family. IP66/67/69 rated when mated with associated faceplate. Color: Grey (7042), Width: 97 mm, Height: 86 mm, Depth: 45 mm

Your advantages

- ✓ IP66/IP67 rated with faceplate secured to the base
- ✓ Ultra-compact housing design for a wide range of applications
- ✓ Housing design supports the installation of a range of PCB thicknesses for high application diversity
- ✓ Integrated pressure compensation membrane for fluctuating ambient pressures
- ✓ Optional accessories for wall and mast mounting
- ✓ Proven PCB connection technology
- ✓ Integrated tamper protection
- ✓ Effective protection of electronics against thermal and mechanical influences
- ✓ Suitable for outdoor/indoor applications



Key Commercial Data

Packing unit	1 pc
GTIN	 4 063151 255633
GTIN	4063151255633
Weight per Piece (excluding packing)	72.000 g
Custom tariff number	85389099
Country of origin	United States

Technical data

Item properties

Type	ECS-B-64X80-S-UV-V GY
------	-----------------------

Electronic housing - ECS-B-64X80-S-UV-V GY - 1196941

Technical data

Item properties

Order No.	1196941
Housing type	outdoor housings
Type	integrated pressure compensation membrane
Max. NEMA code to attain	6
IK code	IK08
Impact strength	IK08
Mounting type	Wall or panel mount. Pole mount with accessory.
Ventilation	integrated pressure compensation membrane
Type of locking	Screw locking

Measurements

Width [w]	98 mm
Height [h]	97 mm
Depth [d]	45 mm

Material specifications

Housing material	PC (polycarbonate)
Color (RAL)	gray (7042)
Flammability rating according to UL 94	V0

Ambient conditions

Ambient temperature (storage/transport)	-40 °C ... 100 °C
Ambient temperature (operation)	-40 °C ... 100 °C

PCB data

Number of PCB holders	1
PCB thickness	1.57 mm

Power dissipation, single housing at 20°C

Ambient temperature	20 °C
Power dissipation	11 W

Hammer test

Specification	EN 50512:1995
Impact energy	5 J
Number of drop cycles	5

Vibration test

Specification	IEC 60068-2-6:2007-12
Frequency	10 - 2000 - 10 Hz
Sweep speed	1 octave/min

Electronic housing - ECS-B-64X80-S-UV-V GY - 1196941

Technical data

Vibration test

Acceleration	15g (61.6 - 2000 Hz)
Test duration per axis	2.5 h
Test directions	X-, Y- and Z-axis

Shock

Specification	IEC 60068-2-27:2008-02
Pulse shape	Semi-sinusoidal
Acceleration	50g
Shock duration	11 ms
Number of shocks per direction	20
Test directions	X-, Y- and Z-axis (pos. and neg.)

Test for assessing the risk of fire (glow wire)

Specification	DIN EN 60695-2-11 (VDE 0471-2-11):2014-11
Temperature	850 °C
Time of exposure	30 s

Degrees of protection provided by enclosures (IP code)

Specification	IEC 60529:1989-11 + AMD 1:1999-11 + AMD 2:2013-08
Result, degree of protection, IP code	IP69 (2 m / 24 h)

Packaging information

Pieces per package	5
Denomination packing units	Pcs.

Standards and regulations

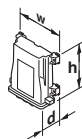
Flammability rating according to UL 94	V0
--	----

Environmental Product Compliance

China RoHS	Environmentally friendly use period: unlimited = EFUP-e
	No hazardous substances above threshold values

Drawings

Dimensional drawing



Electronic housing - ECS-B-64X80-S-UV-V GY - 1196941

Classifications

eCl@ss

eCl@ss 10.0.1	27182702
eCl@ss 11.0	27182702
eCl@ss 4.0	27180401
eCl@ss 4.1	27180401
eCl@ss 5.0	27180505
eCl@ss 5.1	27180505
eCl@ss 6.0	27180800
eCl@ss 7.0	27182702
eCl@ss 9.0	27182702

ETIM

ETIM 3.0	EC001031
ETIM 4.0	EC001031
ETIM 6.0	EC001031
ETIM 7.0	EC001031

UNSPSC

UNSPSC 6.01	31261501
UNSPSC 7.0901	31261501
UNSPSC 11	31261501
UNSPSC 12.01	31261501
UNSPSC 13.2	31261501
UNSPSC 18.0	31261501
UNSPSC 19.0	31261501
UNSPSC 20.0	31261501
UNSPSC 21.0	31261501

Accessories

Accessories

Front plate

Front plate - ECS-P-64X80-S-UV-B GY - 1186435

Screw locking blank faceplate of the ECS Family. IP66/67/69 rated when mated with associated enclosure. Color: Grey (7042), Width: 97 mm, Height: 15 mm, Depth: 42 mm



