



Copyright FCI.

REQUIREMENTS

Technical characteristics:

Shell: steel tin/Zinc Cr3 plated
 Insulators: self-extinguishing black polyester, UL class 94V0
 Contacts size 20, brass, gold on mating end, bright tin on termination end over nickel on entire contact
 Cycles :500 for protection 6
 :200 for protection 4

Harpoons: phosphor bronze, tin plated

Metal plate for electrical continuity: brass, tin/Zinc Cr3 plated

Nuts: brass, tin/Zinc Cr3 plated torque: 0.7N/m

Electrical characteristics:

max. current rating: 5A
 Test voltage: 1000V
 Rated voltage: 300V
 Contact resistance: <15mΩ
 Shell resistance: <5mΩ
 Insulation resistance: >=5000MΩ

Climatic characteristics:

Operating temperature range: -55°C +125°C

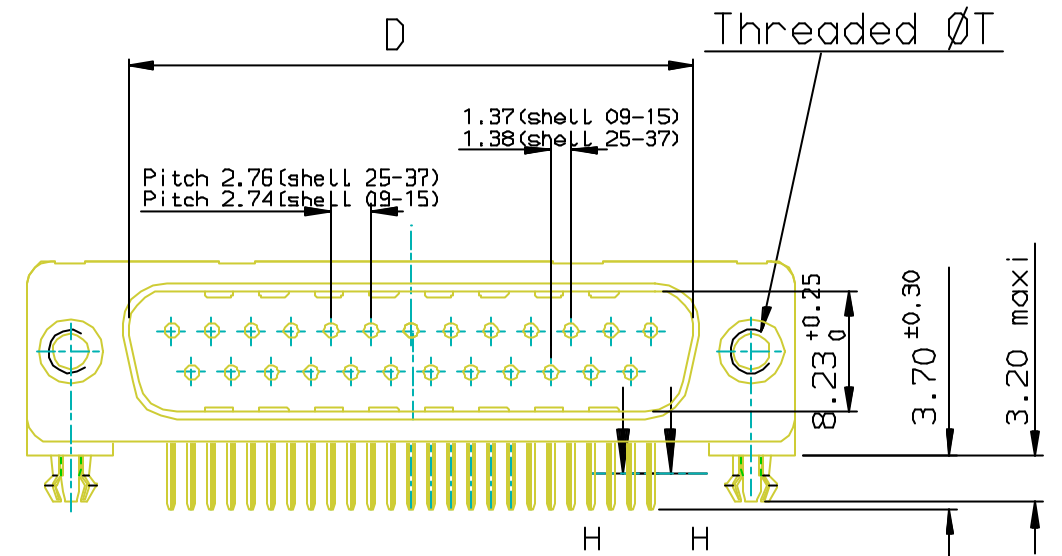
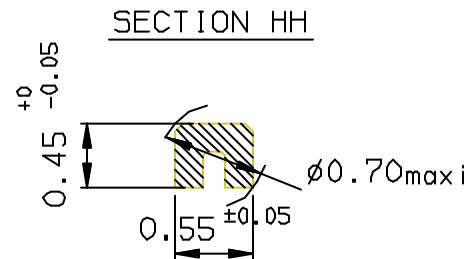
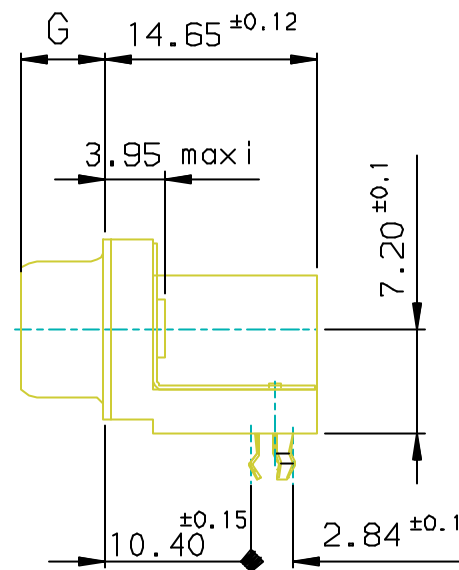
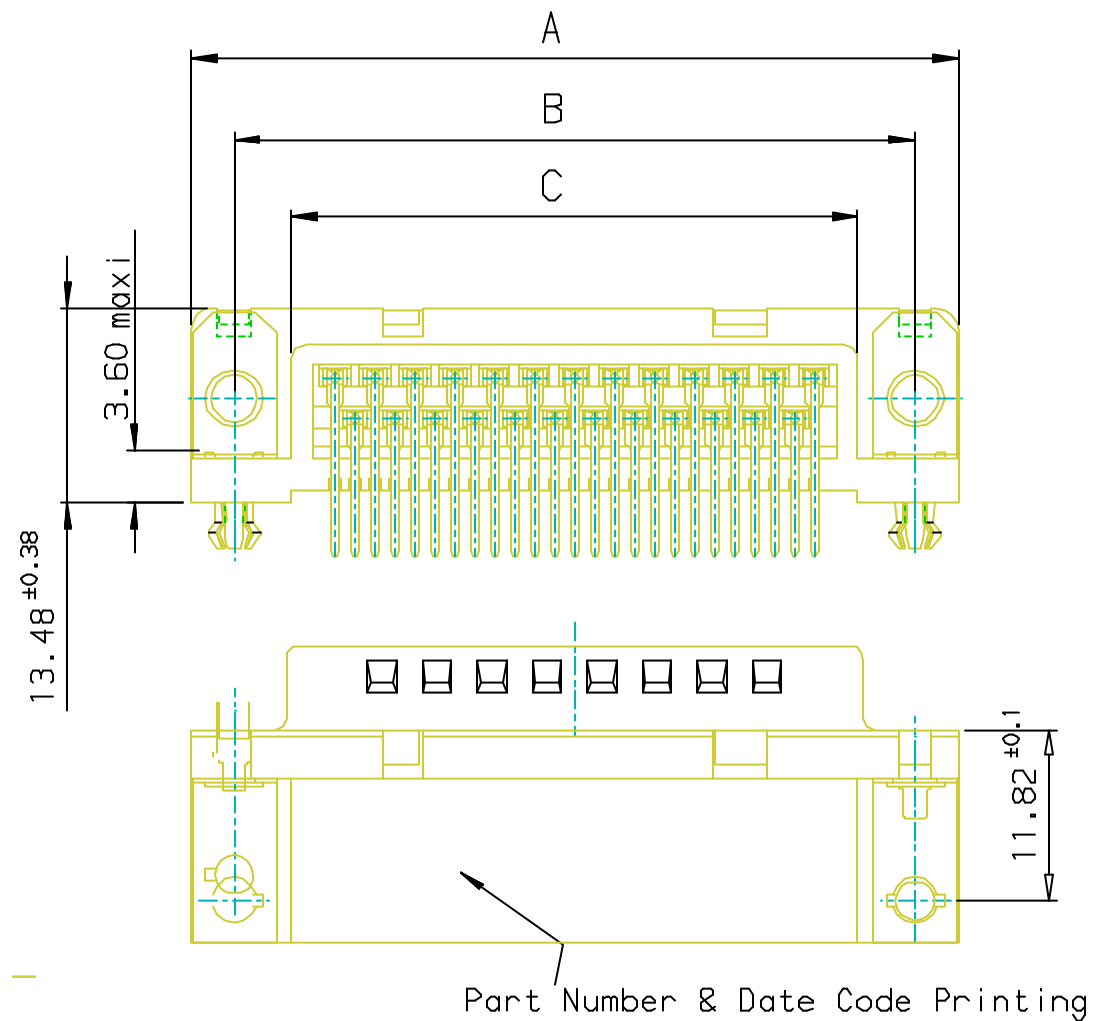
Dimensions:

in accordance with MIL-C-24308

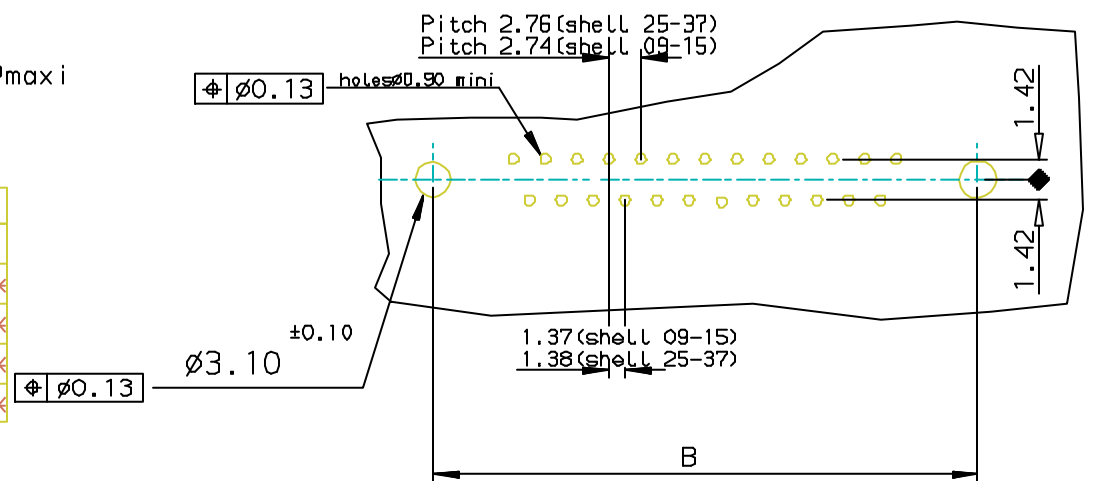
SHELL	A±0.38	B±0.12	C±0.10	D±0.25	G±0.25	PLating: 0.75µ AU	PLating: FLASH AU
09	30.81	24.99	16.96	16.79	5.90	D09P23B6G*00**	D09P23B4G*00**
15	39.14	33.32	25.18	25.12	5.90	D15P23B6G*00**	D15P23B4G*00**
25	53.03	47.04	39.12	38.84	5.70	D25P23B6G*00**	D25P23B4G*00**
37	69.32	63.50	55.68	55.30	5.70	D37P23B6G*00**	D37P23B4G*00**

Threaded ØT M3 = L
 Threaded ØT 4.40 = X

LF FOR LEAD FREE



PC card drilling dimensions (after plating)
 (thickness 1.60±0.20mm)



European Views

rev	ecn no	dr	date
B	105-0124	JS	2005/07/27
C	106-0074	SK	2006/06/08
-	-	-	-
-	-	-	-
-	-	-	-
-	-	-	-

www.fciconnect.com		surface ISO 1302 ✓	tolerance std ISO 406 ISO 1101	projection mm
TOLERANCES UNLESS OTHERWISE SPECIFIED				
Dr	JOHN SLEEBA	1999/05/17	ANGULAR	0.X ±0.1
Eng	GEORGE VJ	1999/05/17	LINEAR	0.XX ±0.1
Chr	GEORGE VJ	2005/07/27	0.XX* ±1°	0.XXX ±0.1
Appr	KVSD	2005/07/27	Product family	D-SUB
FCI		title MALE CONNECT.DELTA D RIGHT ANGLE WITH NUT, HARPOON & METAL PLATE.		Rev. C
catalog no		DELTA-D		sheet 1 of 1
drawing no		C01-8646-0663		CUSTOMER

REV F - 2006-04-17