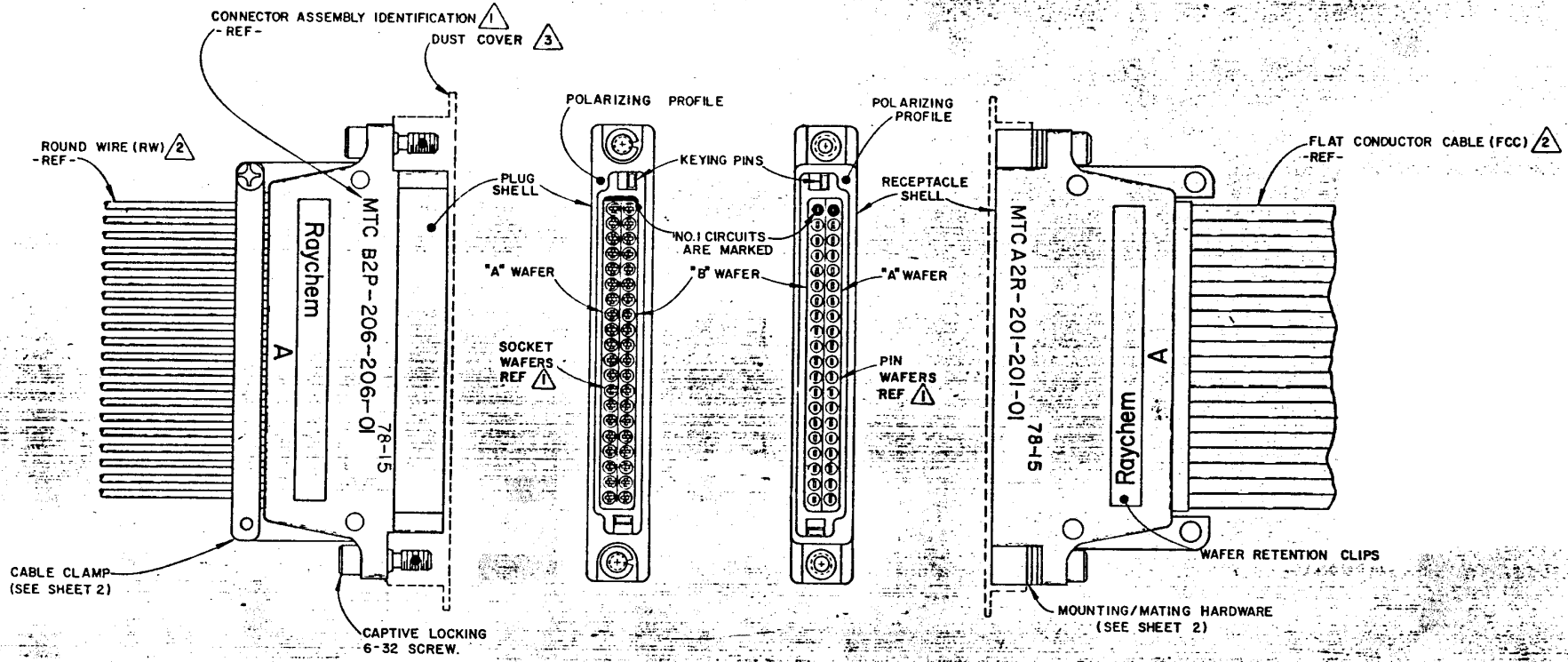


REVISIONS			
LTR	DESCRIPTION	DATE	APPROVED
M	REVISED PER ECN #T-11856	8/24/77	[Signature]
N	REVISED PER ECN T-20169	6-13-95	[Signature]
P	REV PER ECO 12-020967	CT 12-12	RH



- NOTES-
- 1 PLUG & RECEPTACLE SHELLS ACCEPT BOTH PIN & SOCKET WAFERS INTERCHANGEABLY. FOR SHELL AND MOUNTING DETAILS, SEE SHEET 2. FOR WAFER DETAILS, SEE SHEET 3.
 - 2 THE TERMINATED AND ASSEMBLED CONNECTOR IS SHOWN FOR REFERENCE. SEE SHEET 4 FOR ORDERING INFORMATION.
 - 3 DUST COVER SUPPLIED WITH EACH SHELL.

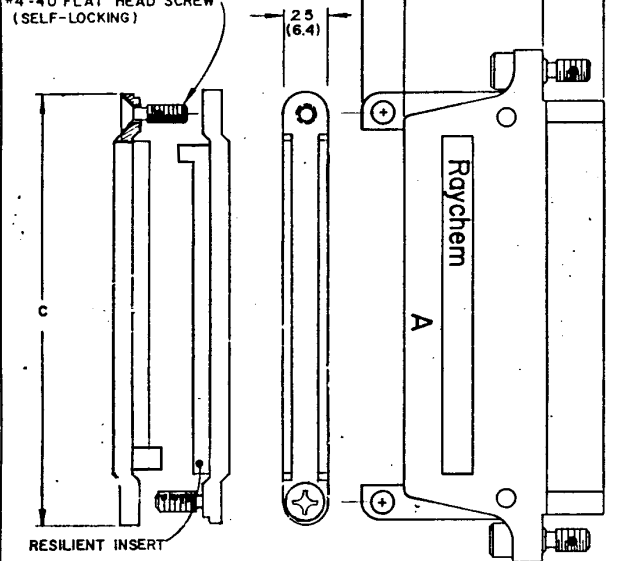
CUSTOMER DRAWING © 1976

DRAWN	V.D.T.	9-13-76	Raychem
CHECKED	[Signature]	1-25-77	SPECIFICATION CONTROL DRAWING
APPROVED			MTC CONNECTOR TYPE I, .100 INCH CENTERS ASSEMBLY
APPROVED			
APPROVED			
UNLESS OTHERWISE SPECIFIED DIMENSIONS ARE IN INCHES AND TOLERANCES ARE			SIZE CODE IDENT DWG NO
X X ±			C NO 06090 D652-0001
X X ±			DO NOT SCALE THIS DRAWING SHEET 1 OF 5
X X ±			
X X ±			

If this document is printed it becomes uncontrolled.
Check with the web for latest revision.

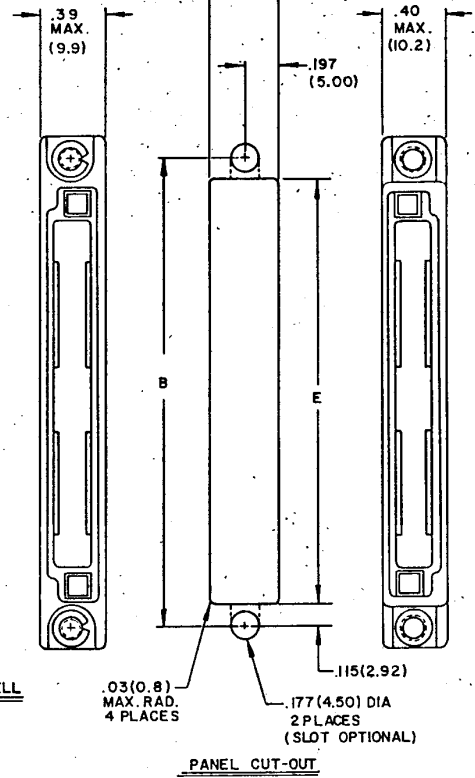
REVISIONS			
LTR	DESCRIPTION	DATE	APPROVED
SEE SHEET I			

CAPTIVE CROSS RECESS
*4-40 FLAT HEAD SCREW
(SELF-LOCKING)

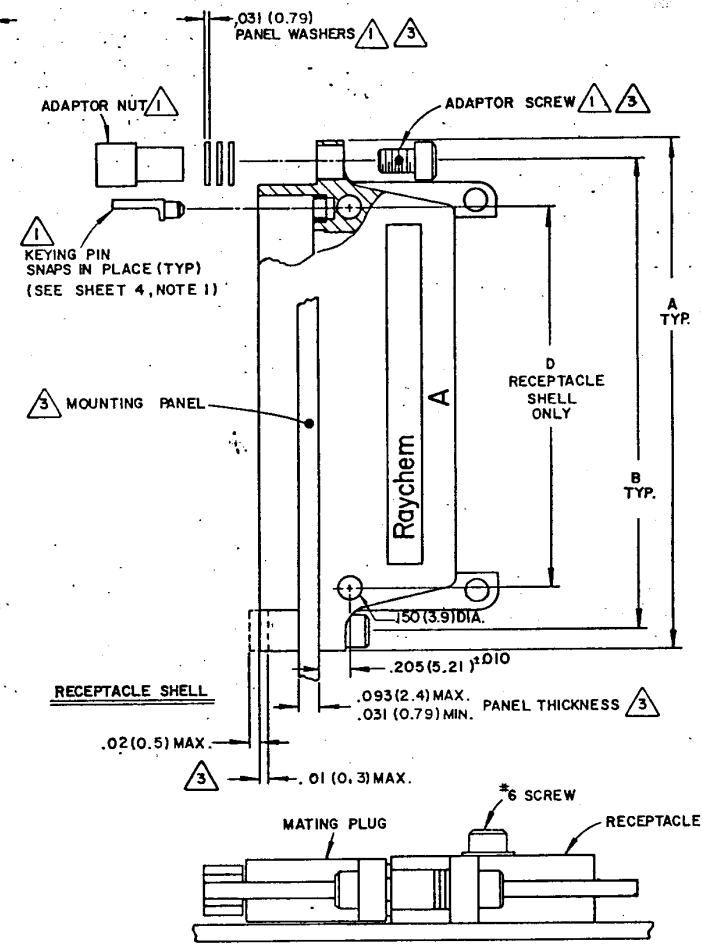


2 CABLE CLAMP(2-PIECE)

PLUG SHELL



PANEL CUT-OUT



FLAT MOUNTING OF RECEPTACLE SHELL © 1976

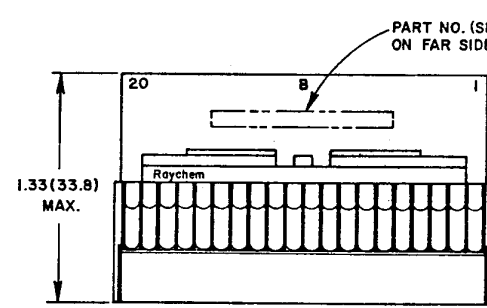
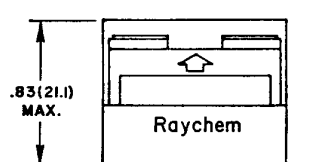
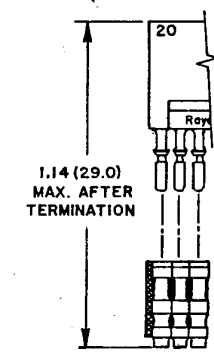
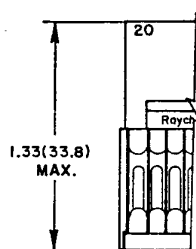
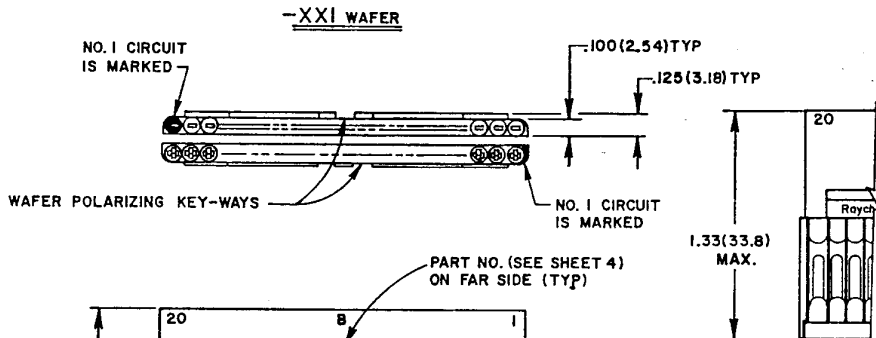
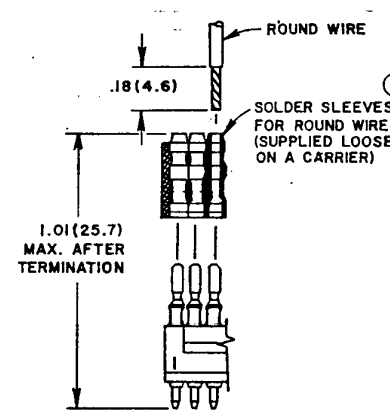
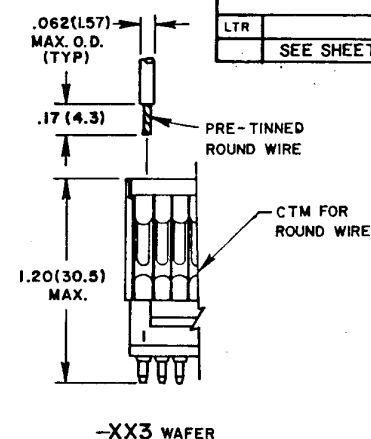
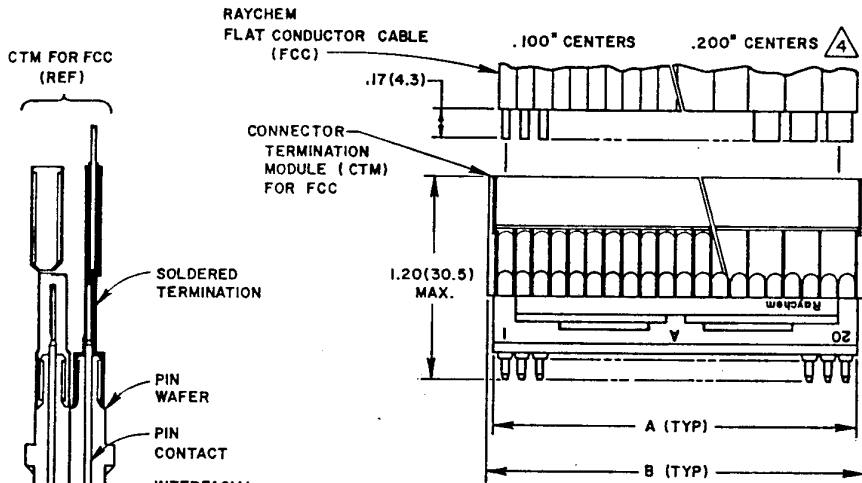
NOTES:

- 1 KEYING PIN IS SUPPLIED UNINSTALLED. MOUNTING/MATING HARDWARE IS SUPPLIED LOOSE WITH EACH RECEPTACLE.
- 2 CABLE CLAMP IS AVAILABLE ON BOTH PLUG & RECEPTACLE SHELLS
- 3 RECEPTACLE IS PANEL MOUNTED BY REMOVING AS MANY PANEL WASHERS AS REQUIRED TO ACCOMMODATE THE THICKNESS OF PANEL BEING USED. DO NOT FRONT MOUNT (PANEL ON BACK SIDE OF FLANGE) WITHOUT CONSULTING FACTORY. USE ONLY ADAPTER SCREWS SUPPLIED WITH CONNECTOR. NUT TO BE FLUSH WITH RECEPTACLE WITHIN TOLERANCE INDICATED.

DIMENSION	SHELL SIZE	
	1 INCH	2 INCH
A	2.00(50.8)	3.00(76.2)
B	1.75(44.45)	2.75(69.85)
C	1.50(38.1)	2.50(63.5)
D	1.27(32.26)	2.27(57.66)
E	1.52(38.6)	2.52(64.01)
MATED LENGTH (MAX)	W/CLAMPS	W/O
	2.6 (66)	2.1 (53.3)

DRAWN	V.D.T.	9-13-76	Raychem
CHECKED	<i>[Signature]</i>	1-25-77	SPECIFICATION CONTROL DRAWING
APPROVED	<i>[Signature]</i>	2-7-77	TITLE
APPROVED			MTC CONNECTOR, TYPE 1, .100 INCH CENTERS SHELL DETAIL & MOUNTING
APPROVED			SIZE CODE IDENT. DWG. NO.
UNLESS OTHERWISE SPECIFIED DIMENSIONS ARE IN INCHES(MM) AND TOLERANCES ARE: .XXX : ±.005 (0.13) .XX : ±.02 (0.5)			C NO. 06090 D652-0001
DO NOT SCALE THIS DRAWING			SHEET 2 OF 5

If this document is printed it becomes uncontrolled.
Check with the web for latest revision.



REVISIONS			
LTR	DESCRIPTION	DATE	APPROVED
	SEE SHEET 1		

- NOTES:
- FOR ORDERING INFORMATION SEE SHEET 4. FOR TERMINATION TOOLING REQUIREMENTS SEE SHEET 5.
 - ANY A AND B WAFER OF THE SAME WIDTH MAY BE INSTALLED IN EITHER PLUG OR RECEPTACLE SHELLS, INTERCHANGEABLY (SEE SHEET 1).
 - A DUMMY WAFER (NO CONTACTS) MAY BE SUBSTITUTED FOR ANY STYLE WAFER OF THE SAME WIDTH (SEE SHEET 4)
 - 2-INCH WAFERS ARE SHOWN FOR REFERENCE.

WAFER SIZE	A	B MAX.
1-INCH	1.03(26.2)	1.12(28.4)
2-INCH	2.03(51.6)	2.12(53.8)

If this document is printed it becomes uncontrolled.
Check with the web for latest revision.

DRAWN	CHANG	1-24-77	Raychem		
CHECKED	<i>E.M. Neil</i>	1-25-77	SPECIFICATION CONTROL DRAWING		
APPROVED	<i>A. Wall</i>	2-7-77	TITLE		
APPROVED			MTC CONNECTOR, TYPE I, .100 INCH CENTERS WAFER DETAIL		
APPROVED			SIZE	CODE IDENT.	DWG. NO.
UNLESS OTHERWISE SPECIFIED DIMENSIONS ARE IN INCHES AND TOLERANCES ARE: (MM)			C	NO. 06090	D652-0001
.XXX : ± .005 (0.13) .XX : ± .02 (0.5) - : ± .005 (0.13)			DO NOT SCALE THIS DRAWING		

© 1976
RAYCHEM CORPORATION
300 COMBUSTION DRIVE
MENLO PARK, CA 94025

SPECIFICATION

Refer to Raychem Specification D-6006
for complete details
Unless Otherwise Specified

Ratings

Temperature	MTCA	-65°C to +125°C
	MTCB	-65°C to +150°C
	MTCC	-65°C to +150°C
Voltage	500 volts	
Current	5 amps	

Materials

MTM Insulating Body	Polyvinylidene Fluoride
Solder Sleeve Tubing	Polyvinylidene Fluoride
Sealing Material	Thermally Stabilized Thermoplastic
Wafer Material	High grade Polyarylene Thermoplastic
Solder	MTCA -Sn63 per QQ-S-571
	MTCB -Sb5 per QQ-S-571
Flux	Per QQ-S-571 type SRAP
Contact Finish	Gold Plated per MIL-G-45204, Type I, Grade C, Class 1 on mating surfaces
Shell Finish	MTCA -Black Anodized per MIL-A-8625, Type II
	MTCB -Electroless nickel per MIL-C-26074, Class 3, Grade B
	MTCC -Cadmium plate per QQ-P-416 over nickel underplate
Mounting/Mating Hardware	Stainless Steel, passivated for MTCA and MTCB connectors
	Stainless Steel, Cadmium plated for BTCC connectors
Elastomeric Seals	Fluorosilicone Rubber

Tooling Required

Consult Factory For Tooling Required

Summary of Specifications

Test	Test Method	Performance Requirement
Insulation Resistance	*Method 3003	
Room Temperature	23°C	5000 Megohms, minimum
Upper Rated Temperature	after 1000 hours	200 Megohms, minimum
Dielectric Withstanding Voltage		
Sea Level	*Method 3001, 1500 VAC rms, 60 Hz	No breakdown or flashover
High Altitude	*Method 105, 70,000 ft., 375 VAC rms, 60 Hz	No breakdown or flashover
Contact Resistance		
At Rated Current	Initial After Conditioning	10 milliohms maximum 12 milliohms
At Low Level Current	Initial After Conditioning	10 milliohms 14 milliohms
Shell-to-Shell Conductivity	1 amp	50 millivolts maximum
Electrical Engagement	Fully Mated Position	.050" minimum Engaging Separating
Contact Engaging and Separating Forces	Initial (max. avg.) After Conditioning	9 oz. max. 1 oz. min. 12 oz. max. 1 oz. min.
Durability	500 cycles	No damage, pass Contact Resistance

▲ ENTIRE SYSTEM MUST BE CADMIUM PLATED FOR 500 HOURS SALT SPRAY COMPATABILITY TO BE EFFECTIVE.

1. THIS SPECIFICATION SHEET TAKES PRECEDENCE OVER DOCUMENTS REFERENCED HEREIN.
REFERENCE DOCUMENTS SHALL BE OF THE ISSUES IN EFFECT ON DATE OF INVITATION TO BID.

REVISIONS			
LTR	DESCRIPTION	DATE	APPROVED
	SEE SHEET 1		

Tensile Strength
Flat Cable
Round Wires

20 lbs. per inch of cable width minimum
20 lbs. for AWG 20
12 lbs. for AWG 22
8 lbs. for AWG 24
5 lbs. for AWG 26 minimum

Insert Retention *Method 2010, 100 psi
Contact Retention *Method 2007, 10 lbs. load
Connector Mating and Unmating Per D-6006, 10 cycles

Retain normal position
Axial displacement not to exceed 0.02 inches
Pass Contact Resistance and Engaging/Separating Forces
No damage

Maintenance Aging 3 mating cycles, 5 wafer removal cycles, 3 mating cycles

Vibration *Method 2005, (20g's peak)
Test Condition IV

No physical damage or electrical discontinuity greater than 1 microsecond

Mechanical Shock *Method 2004, 6 ms, Sawtooth
9.7 ft/sec, 100g's

No physical damage or electrical discontinuity greater than 1 microsecond

Thermal Shock *Method 1003, rated temperatures
Temperature Life *Method 1005, 1000 hours

No cracking, crazing or physical damage
Pass Insulation Resistance, Elevated and Ambient Temperature and Contact Resistance

Humidity *Method 1002, Type II
10 cycles, 90-98% relative humidity

Insulation Resistance of 100 Megohms, minimum

Altitude Immersion *Method 1004, 75,000 ft., 3 cycles

Insulation Resistance of 1000 Megohms, minimum
Pass Dielectric Withstanding Voltage

Altitude-Low Temp. 70,000 ft., -50°C

Dielectric Withstanding Voltage of 625 volts, 60 Hz

Salt Spray (Corrosion) ▲ *Method 1001
(48 hours for MTCA and MTCB connectors)
(500 hours for MTCC connectors)

Pass Insulation Resistance and Dielectric Withstanding Voltage at Sea Level

No damage detrimental to connector operation

Ozone Resistance 0.010 to 0.015% ozone in air for 2 hours

No cracking in termination area, pass Insulation Resistance

Fungus Resistance MIL-STD-454, Req. 4
Fluid Immersion Misc. Fluids (see D-6006)
Permeability Indicator per MIL-I-17214
Solderability **Method 208
MTCA-Sn63 solder at 230°C
MTCB-Sb5 solder at 316°C

No fungus growth
No damage sufficient to prevent functioning
2.0 maximum
95% minimum coverage

*MIL-STD-1344

TEST METHODS FOR ELECTRICAL CONNECTORS

**MIL-STD-202

TEST METHODS FOR ELECTRICAL COMPONENT PARTS

SPECIFICATION CONTROL DRAWING

D6520001.DRW

DRAWN	LUTTICKEN	1-22-86	<h1 style="margin: 0;">Raychem</h1>		RAYCHEM CORPORATION 300 CONSTITUTION DRIVE MENLO PARK, CALIFORNIA 94025
CHECKED			TITLE MTC CONNECTOR TYPE I, .100 INCH CENTERS SPECIFICATION SHEET		
APPROVED					
APPROVED					
UNLESS OTHERWISE SPECIFIED DIMENSIONS ARE IN INCHES. METRIC DIMENSIONS ARE IN PARENTHESES					
SIZE	CODE IDENT. NO.	DWG. NO.	D652-0001		
C	06090	WEIGHT	SHEET 5 OF 5		
DO NOT SCALE THIS DRAWING					