

PART NUMBER	REV	FEED TYPE	DESCRIPTION	PROGRAMMED MEMORY CHIP
2151001-1	A	MECHANICAL	FINE CRIMP HEIGHT ADJUST	-
2151001-2	A	PNEUMATIC	FINE CRIMP HEIGHT ADJUST	-
2151001-5	A	SERVO	FINE CRIMP HEIGHT ADJUST	8-2151001-5
2151001-6	A	SERVO	NON-CRIMP HEIGHT ADJUST	8-2151001-6
2151001-7	A	NONE	FINE CRIMP HEIGHT ADJUST	-
7-2151001-7	A	-	SPARE PARTS KIT	-

APPLICATOR DATA

CRIMP	SIZE	TYPE
WIRE	3.56 mm [.140]	F
INSUL	-	-

APPL INSTRUCTIONS
408-10389

TERMINAL DATA: TE TERMINAL TE CRIMP SPEC
TERMINAL NAME: UNIVERSAL MATE-N-LOCK PIN AND SOCKET

WIRE STRIP LENGTH	INSULATION DIAMETER RANGE
6.38-7.14 mm [.251-.281 IN]	0.00-5.08 mm [.000-.200 IN]

TERMINAL APPL SPEC 114-1010

TERMINALS APPLIED

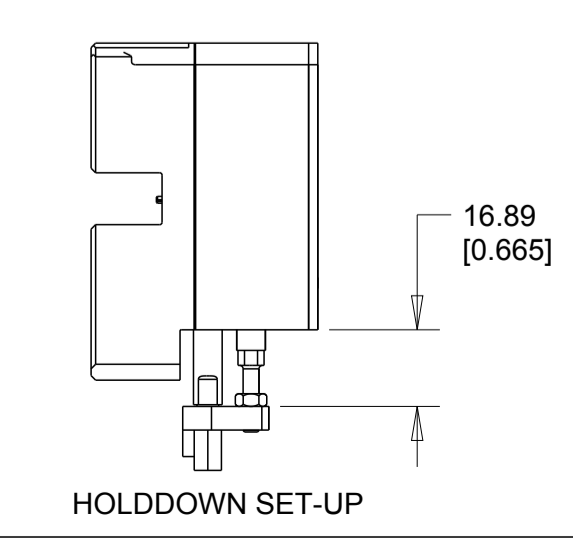
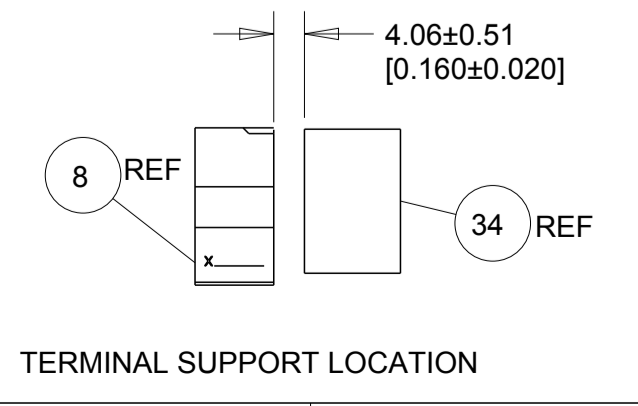
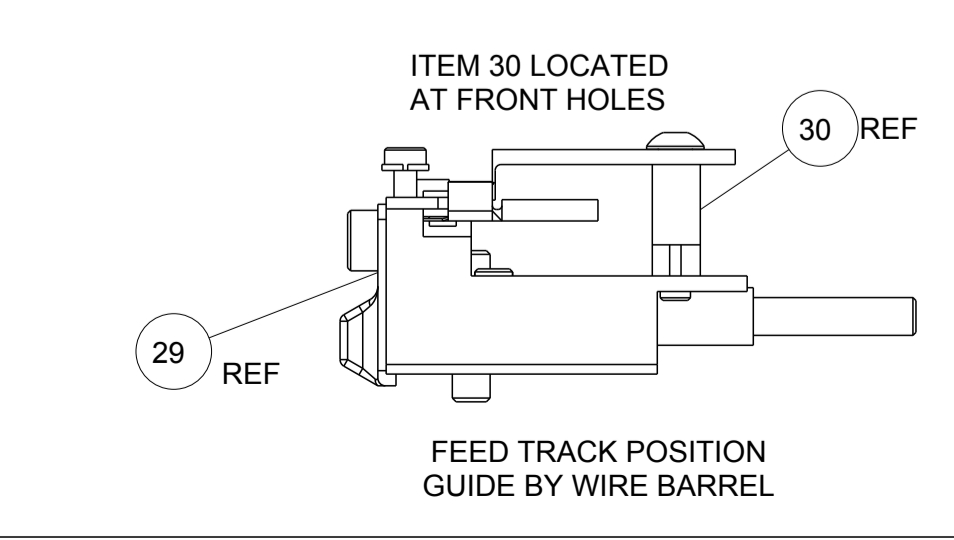
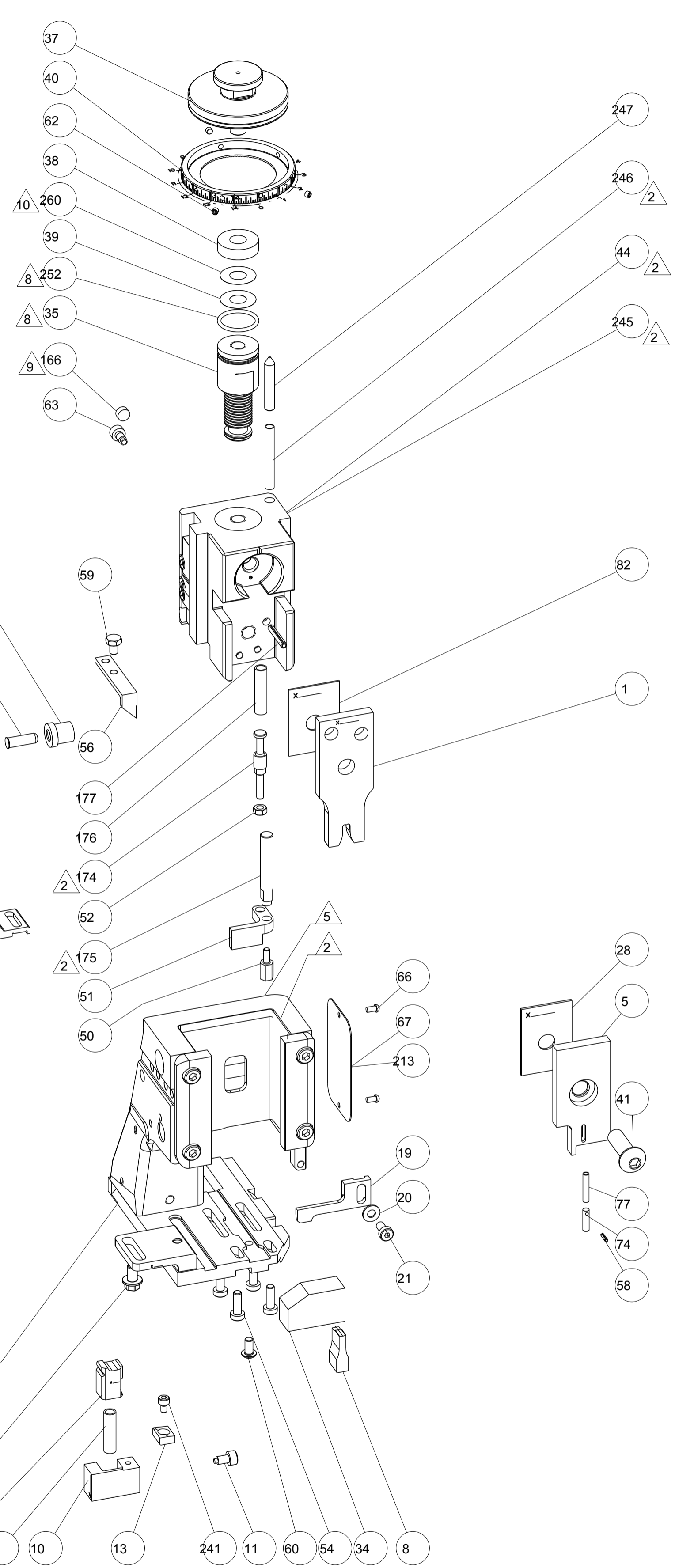
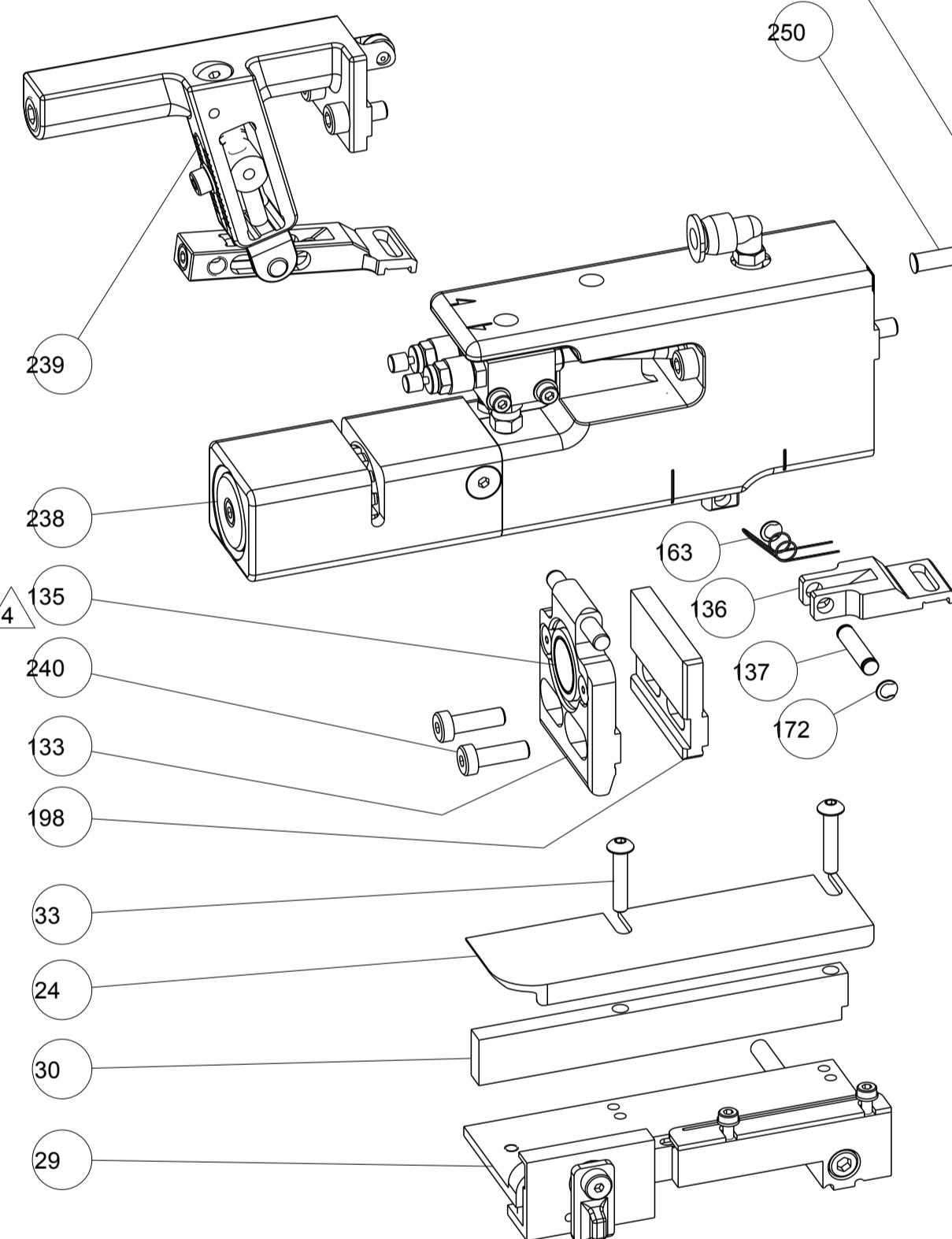
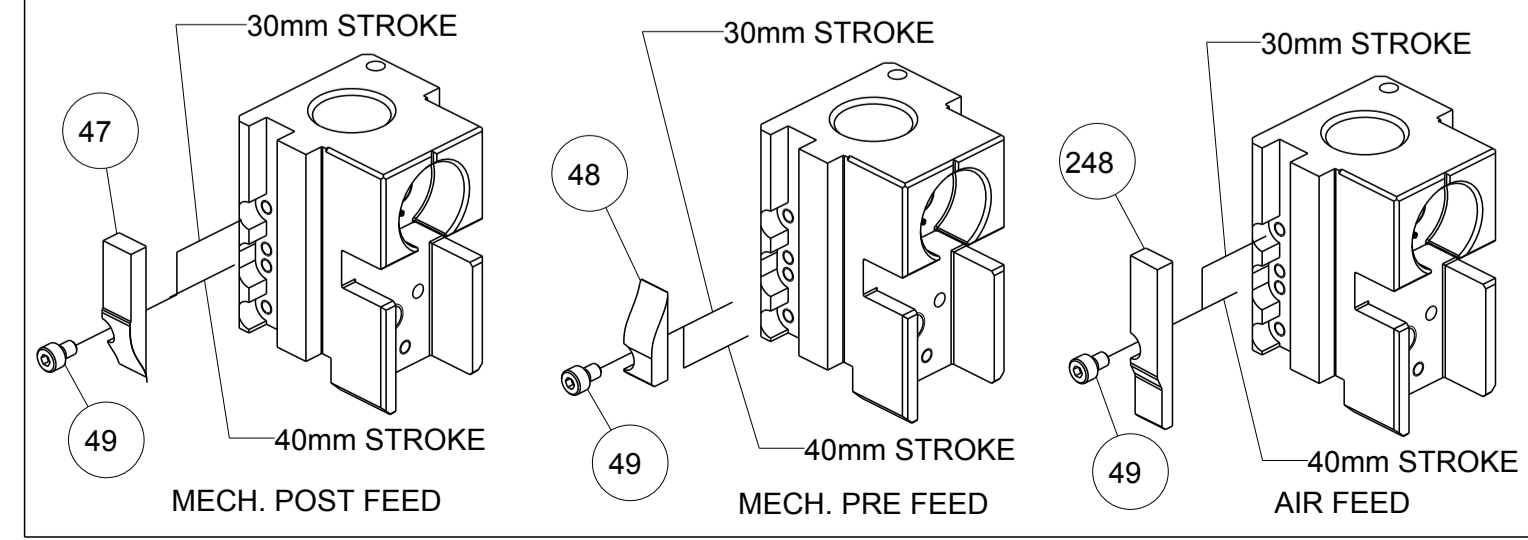
TE TERMINAL	TE TERMINAL	TE TERMINAL	TE TERMINAL
350923-3	770004-4	350922-3	770003-8
350923-4	1-770004-0	350922-6	770003-8
350923-6	1586065-1	770234-3	1-770003-0
770004-3	350922-1	770003-3	1586096-1

WIRE SIZE	CRIMP HEIGHT mm [INCH]	FINE ADJUST REF SETTING*
10 AWG	2.41+/-0.05 [.095+/- .002]	2.3
5.00mm ²	2.31+/-0.05 [.091+/- .002]	3.7
4.40mm ²	2.13+/-0.05 [.084+/- .002]	5.9
4.00mm ²	2.03+/-0.05 [.080+/- .002]	7.2
12 AWG	1.96+/-0.05 [.077+/- .002]	7.9

- 1 RECOMMENDED SPARE PARTS
- 2 GREASE BEARING SURFACES LIGHTLY
- 3 LUBRICATE DAILY PER THE APPLICATOR INSTRUCTION SHEET SUPPLIED WITH THE APPLICATOR.
- 4 APPLICATOR SPECIFIC DATA TO BE ENTERED INTO BLANK MEMORY CHIP AT ASSEMBLY.
- 5 TO CONVERT THE APPLICATOR TO A NON-CARRIER CUTTING STYLE, REMOVE ITEM 13 AND ATTACH TO THE LOCATION INDICATED.
- 6 POSITIONAL ADJUSTMENTS OF THE STRIPPER MAY BE REQUIRED WHEN MOVING THE APPLICATOR BETWEEN BENCH AND LEADMAKER APPLICATIONS.
- 7 FOR THE ASIAN VERSION OF THIS APPLICATOR, SEE LOG 2151001-9
- 8 GREASE THREADS, GROOVE & O-RING ON ITEMS 35 & 252.
- 9 MAGNET MUST BE ORIENTED CORRECTLY IN ORDER TO PROPERLY ACTUATE THE COUNTER.
- 10 WHEN ASSEMBLING NON-CRIMP HEIGHT ADJUST APPLICATOR (-6) USE SHIM PACK 2119957-2 TO ATTAIN APPLICATOR'S MAXIMUM WIRE CRIMP HEIGHT AT NORMAL TERMINATOR SHUT HEIGHT.

PART REQUIRED FOR FEED CONVERSIONS

FEED VER. TO CONVERT TO	RETROFIT KIT	ADDITIONAL PARTS REQ'D
MECHANICAL	2119949-1	56
PNEUMATIC	2119950-1	56
SERVO	2119951-1	135 & 240



REV	DATE	BY	CHK	APP'D	DESCRIPTION	ITEM NO
1	4JAN2011	G.HOFFNER	G.BAILEY	G.BAILEY	ORIGINAL	GB
A	15APR2011	RELEASED				TE
A1	12SEP2011	ECR-11-018794				GH

REV	DATE	BY	CHK	APP'D	DESCRIPTION	ITEM NO
-	-	-	-	-	2119957-2 APPLICATOR SHIM PACK	260
-	-	-	-	-	8-21084-0 O-RING, .676 ID, .070 DIA. MAT.	252
-	-	-	-	-	2119640-1 PUSH ROD, AIR FEED	250
-	-	-	-	-	2079988-1 BUSHING, LCH5-12, MISUMI	249
-	-	-	-	-	2119641-1 FEED CAM, AIR FEED	248
-	-	-	-	-	2119798-1 DETENT PIN	247
-	-	-	-	-	1-22279-3 SPRING, COMPRESSION	246
-	-	-	-	-	2119758-1 RAM, AMP STYLE, SIDE FEED, NON-ADJ.	245
-	-	-	-	-	18023-1 SCR, SKT HD CAP M3 X 5.0	241
-	-	-	-	-	2168084-6 SHCS, LOW HEAD, RoHS, M5 X 16	240
-	-	-	-	-	2119580-1 MECHANICAL FEED ASSEMBLY	239
-	-	-	-	-	2063440-1 AIR FEED MODULE	238
-	-	-	-	-	2119740-2 TAG, IDENTIFICATION	213
-	-	-	-	-	1901094-3 SPACER, FEEDER	198
-	-	-	-	-	993111-1 PIN, SLOTTED SPRING 3.0 X 20.0	177
-	-	-	-	-	8-22280-7 SPRING, COMPRESSION	176
-	-	-	-	-	1752353-2 GUIDE PIN, HOLDDOWN	175
-	-	-	-	-	1901680-2 GUIDE PIN, HOLDDOWN	174
-	-	-	-	-	21045-3 RING, RETAIN, EXTERN, 3/16 CRESCENT	172
-	-	-	-	-	994969-1 MAGNET, RARE EARTH HIGH ENERGY	166
-	-	-	-	-	240638-1 SPRING, FEED FINGER	163
-	-	-	-	-	3-23627-7 PIN, RETAIN, GRVD, 3/16 X .854	137
-	-	-	-	-	2119799-1 HOLDER, FEED FINGER, AF	136
-	-	-	-	-	SEE TABLE MEMORY CHIP, PROGRAMMED	135
-	-	-	-	-	1633743-1 SERVO FEED LATCH ASM	133
-	-	-	-	-	455888-7 SPACER, CRIMPER	82
-	-	-	-	-	22278-7 SPRING, COMPRESSION	77
-	-	-	-	-	854769-4 HOLDER, INS	74
-	-	-	-	-	2119956-1 DOCUMENTATION PACKAGE	71
-	-	-	-	-	2119740-1 TAG, IDENTIFICATION	67
-	-	-	-	-	2168078-1 SCREW, DRIVE, RH, RoHS	66
-	-	-	-	-	2119793-1 LIMITER, ADJUSTMENT BOLT	63
-	-	-	-	-	992763-4 SCR, SET, SOC, CONE POINT, M3 x 3.0	62
-	-	-	-	-	2079383-4 SCR, BHSC, RoHS (M4 X 8)	60
-	-	-	-	-	5-18022-5 SCR, HEX HD CAP, M4 X 6.0	59
-	-	-	-	-	21028-2 PIN, SLOTTED SPRING .062 X .250	58
-	-	-	-	-	1338685-1 PAWL, FEED	56
-	-	-	-	-	2168084-1 SHCS, LOW HEAD, RoHS, M4 X 12	54
-	-	-	-	-	1-5018030-0 NUT, HEX, REG, RoHS, M3.5	52
-	-	-	-	-	1901681-1 HOLDDOWN, TERMINAL	51
-	-	-	-	-	2-1752354-0 STANDOFF, HOLD-DOWN	50
-	-	-	-	-	18023-9 SCR, SKT HD CAP M4 X 6.0	49
-	-	-	-	-	2119652-1 FEED CAM, PRE FEED	48
-	-	-	-	-	2119653-1 FEED CAM, POST FEED	47
-	-	-	-	-	2119656-9 APPLICATOR BASIC ASSEMBLY, SF	46
-	-	-	-	-	2119370-1 RAM, AMP STYLE, SIDE FEED	44
-	-	-	-	-	2079383-7 SCR, BHSC, RoHS (M8 X 25)	41
-	-	-	-	-	2119645-1 DISC, NUMBERED FA WIRE ADJUSTMENT	40
-	-	-	-	-	2119957-1 APPLICATOR SHIM PACK	39
-	-	-	-	-	2119644-1 RAM WASHER, PRECISION	38
-	-	-	-	-	2119085-1 FA HEAD, ATLANTIC STYLE	37
-	-	-	-	-	2119092-1 BOLT, ADJUSTMENT	35
-	-	-	-	-	1752356-6 SUPPORT, TERMINAL	34
-	-	-	-	-	2079383-5 SCR, BHSC, RoHS (M4 X 20)	33
-	-	-	-	-	2161328-1 HEX HEAD, FLANGED, M5 x 8mm LONG	32
-	-	-	-	-	1-1320908-0 SPACER, STRIP GUIDE	30
-	-	-	-	-	2119959-1 ASSEMBLY, STRIP GUIDE	29
-	-	-	-	-	1-455888-0 SPACER, CRIMPER	28
-	-	-	-	-	1320928-2 PLATE, STRIP GUIDE	24
-	-	-	-	-	2168084-4 SHCS, LOW HEAD, RoHS, M4 X 8	21
-	-	-	-	-	1-18028-2 WASHER, FLAT, REG M4	20
-	-	-	-	-	2119533-1 STRIPPER, SIDE FEED	19
-	-	-	-	-	2119806-1 INSERT, SHEAR	13
-	-	-	-	-	3-22280-3 SPRING, COMPRESSION	12
-	-	-	-	-	356885-5 STOP, SHEAR	11
-	-	-	-	-	2119805-1 SHEAR HOLDER, FRONT	10
-	-	-	-	-	462006-6 FLOATING SHEAR, FRONT	9
-	-	-	-	-	1333227-5 ANVIL, SPECIAL (WIRE/B ONLY)	8
-	-	-	-	-	1-2119780-1 DEPRESSOR, SHEAR	5
-	-	-	-	-	1-456411-2 CRIMPER, WIRE PREMIUM	1

TE Connectivity
Harrisburg, PA 17105-3608

Product Name: Ocean Side Feed Atlantic Style Applicator

Part No: A1 00779 C=2151001

Scale: 1:2 Sheet: 1 of 1 Rev: A1