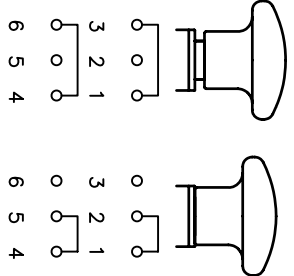
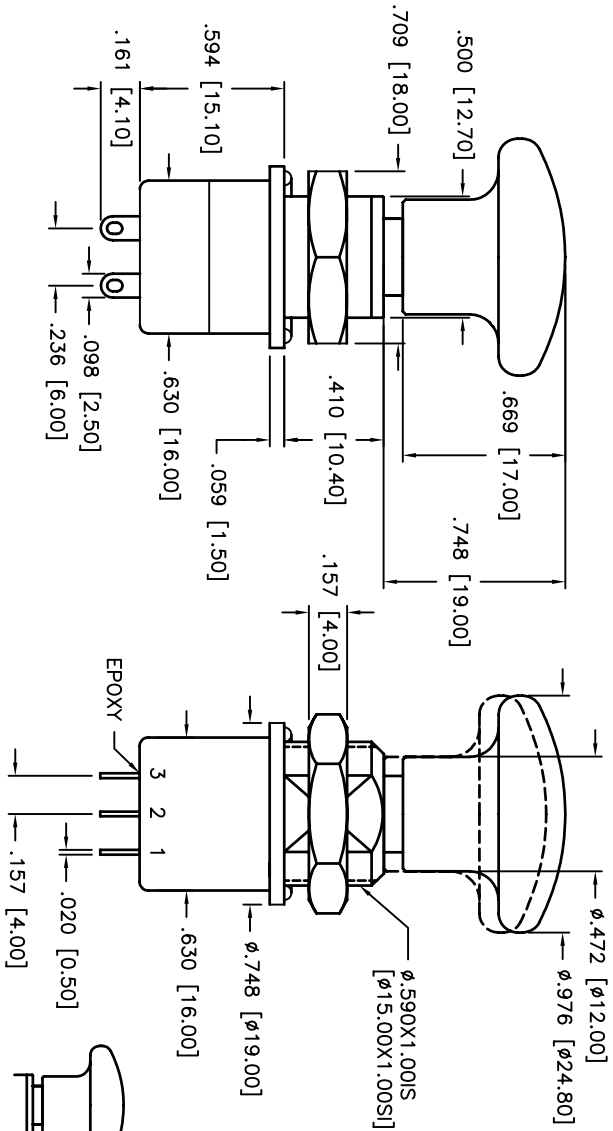
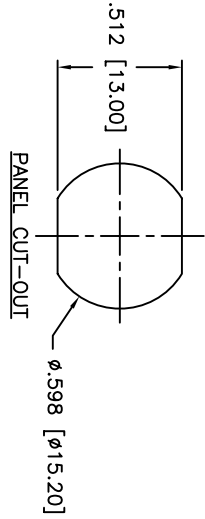


THIS DOCUMENT IS THE PROPERTY OF APPI COMPONENTS AND SHALL NOT BE COPIED, REPRODUCED, DISCLOSED OR SALE WITHOUT PERMISSION OF A DULY AUTHORIZED REPRESENTATIVE OF APPI COMPONENTS INC.



DESCRIPTION: DPST ON-ON PROFESSIONAL PUSHBUTTON SWITCH

SPECIFICATION:

RATING: 4A 28VDC  
 (WHEN USED ABOVE 0.1A 28VDC GOLD PLATING IS REMOVED)  
 ELECTRICAL LIFE: 10,000 CYCLES  
 CONTACT RESISTANCE: 10mΩ MAX.  
 INSULATION RESISTANCE: 1,000MΩ MIN. AT 500VDC  
 DIELECTRIC STRENGTH: 1,000Vrms 50Hz MIN. BETWEEN TERMINALS  
 2,000Vrms 50Hz BETWEEN POLES AND BETWEEN TERMINALS  
 AND FRAME

TORQUE: 1.50Nm MAX. APPLIED TO NUT  
 TRAVEL: .078 [2.00]  
 TEMPERATURE RATING: -40°C TO +85°C  
 MOISTURE RESISTANCE: 56 DAYS PER IEC 68-2-3  
 VIBRATION RESISTANCE: 10-500Hz/10g PER IEC68-2-6  
 SHOCK RESISTANCE: 50g PER IEC 68-2-27  
 OPERATION FORCE:

PUSH: 20N±5N  
 PULL: 21N±6N

SEALING: IP65

MATERIALS:

CASE: DAP WITH BLACK PBT SHELL (EPOXY SEALED)  
 ACTUATOR: BLACK CHROME PLATED BRASS  
 BUSHING: BLACK CHROME PLATED BRASS  
 CONTACTS: GOLD PLATED SILVER  
 TERMINAL SEAL: EPOXY  
 DOME CAP: RED ANODIZED ALUMINUM

0A. INSECT DIMENSION TOLERANCES (UNLESS OTHERWISE SPECIFIED) .XX = ±.02 [0.05] .XXX = ±.0008 [0.02] ANGLE = 30.5°		DESIGNS ARE CRITICAL APPI APPI COMPONENTS INC. 63 Nank. Rd. Haverhill, MA 01830 Phone: 978-372-3534		DRN. CJD BR. BR OR. PJD	
TITLE PUSH/PULL PUSHBUTTON SWITCH	SHEET 1 OF 1	SIZE B	SCALE 2:1	THIRD ANGLE PROJECTION	DATE 11/10/06
DO NOT SCALE DRAWING NO. 13440A02G-25X1156+U4546	REV A				

DATE	SYM	REVISION RECORD	DWN.	CK.