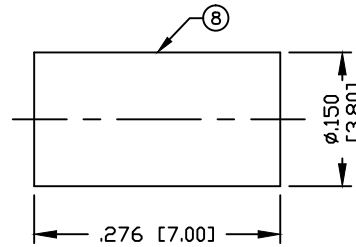
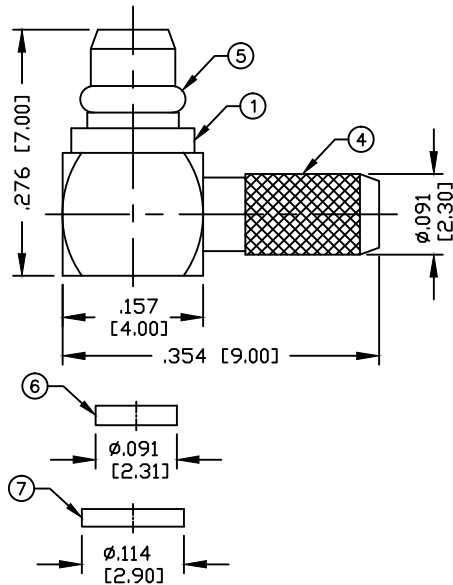


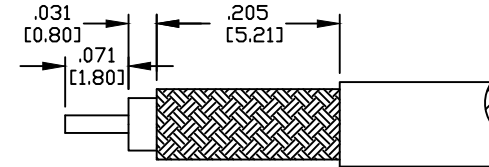
PART NO.

**RMX-9010-1B**

REV	DESCRIPTION	DWN	DATE	APPROVED
C	UPDATED CONNECTOR DESIGN & DWG FORMAT	CZS	06/27/19	JDMc



HEX CRIMP SIZE .130"

RECOMMENDED  
CABLE STRIPPING DIMENSIONS**SPECIFICATIONS:**

IMPEDANCE: 50 Ohms  
 FREQUENCY RANGE: 0-6 GHz  
 VSWR: 1.3 MAX  
 INSERTION LOSS: 0.3 dB MAX @ 1GHz  
 DIELECTRIC WITHSTANDING VOLTAGE: 500 VOLTS rms MAX  
 INSULATION RESISTANCE: 1K M Ohms  
 WORKING VOLTAGE: 170 Vrms AT SEA LEVEL  
 ENGAGEMENT FORCE: 8 lbs. MAX.  
 DISENGAGEMENT FORCE: 1.4 lbs. MIN.  
 RG-174, 188, 188A, 316/U; ALPHA 9174, 9316;  
 BELDEN 8216, 83269, 83284, 84-316; TIMES LMR-100A

CUSTOMER  
OUTLINE DRAWINGALL DIMENSIONS  
ARE REFERENCE ONLYUNLESS OTHERWISE SPECIFIED:  
DIMENSIONS ARE IN INCHES  
AND [MILLIMETERS]DRAWN  
C. ZUNIGA 06/27/19  
CHECKEDORJ DRAWN  
C. ZUNIGA 4/1/99**RoHS  
COMPLIANT**

PROPRIETARY AND CONFIDENTIAL  
 THIS DRAWING CONTAINS  
 INFORMATION PROPRIETARY TO  
 RF INDUSTRIES. ANY  
 UNAUTHORIZED USE OF THIS  
 DRAWING IS EXPRESSLY  
 PROHIBITED WITHOUT WRITTEN  
 PERMISSION FROM RF  
 INDUSTRIES. ANY VIOLATION IS  
 PUNISHABLE UNDER U.S.  
 COPYRIGHT LAWS.

**RFconnectors**

DIVISION OF RF INDUSTRIES, LTD. (858) 549-6345 FAX

RFINDUSTRIES.COM  
 7610 MIRAMAR RD.  
 SAN DIEGO, CA 92126  
 (858) 549-6340  
 (858) 549-6345 FAX

**MMCX CRIMP PLUG**

RIGHT ANGLE

CABLE GROUP	DWG #	REVISION
B	<b>RMX-9010-1B</b>	C
FORMAT	SCALE	CONTROL #
A	NTS	000000

SHEET 1 OF 1

#	DESCRIPTION	QTY	MATERIAL	FINISH
8	FERRULE	1	COPPER	GOLD
7	END CAP	1	BRASS	GOLD
6	INSULATOR DISK	1	PTFE	---
5	RETAINING RING	1	Be.Cu.	GOLD
4	FERRULE STUD	1	BRASS	GOLD
3	PIN	1	BRASS	GOLD
2	INSULATOR	1	PTFE	---
1	BODY	1	BRASS	GOLD