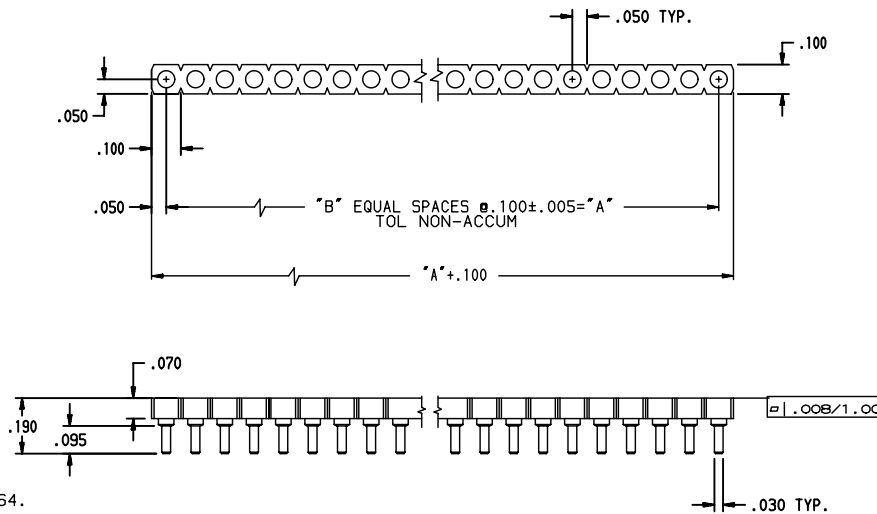


TABLE 2: LEAD FREE VERSION

TABLE 2 CONTACTS		
[XXX]BLF	CLIP PLATING	SHELL PLATING
157BLF	200 $\mu$ " TIN OVER 50 $\mu$ " NICKEL	200 $\mu$ " TIN OVER 100 $\mu$ " NICKEL
160BLF	30 $\mu$ " GOLD OVER 50 $\mu$ " NICKEL	200 $\mu$ " TIN OVER 100 $\mu$ " NICKEL

TABLE 1				
PART NUMBER			DIMENSION	
SIP050-1 X [ ] - [XXX]B(LF)	"A"	"B"	"A"	"B"
01	0	0		
02	.100	1		
03	.200	2		
04	.300	3		
05	.400	4		
06	.500	5		
07	.600	6		
08	.700	7		
09	.800	8		
10	.900	9		
11	1.000	10		
12	1.100	11		
13	1.200	12		
14	1.300	13		
15	1.400	14		
16	1.500	15		
17	1.600	16		
18	1.700	17		
19	1.800	18		
20	1.900	19		
21	2.000	20		
22	2.100	21		
23	2.200	22		
24	2.300	23		
25	2.400	24		
26	2.500	25		
27	2.600	26		
28	2.700	27		
29	2.800	28		
30	2.900	29		
31	3.000	30		
32	3.100	31		
64	6.300	63		



NOTES:

- 1. NUMBER OF CONTACTS PER ROW (01 TO 32), AND 64.
- 2. MATERIAL:  
GLASS FILLED POLYESTER (PCT)  
RATED UL 94V-0, COLOR BLACK.
- 3. CONTACT MATERIAL:  
OUTER SHELL: BRASS ALLOY 360, 1/2 HARD PER QQ-B-626.  
INNER CONTACT: BERYLLIUM COPPER, ALLOY 172 PER QQ-C-533.
- 4. CONTACT PLATING:  
TIN/LEAD OR LEAD-FREE PER MIL-P-81728 TYPE 1,  
NICKEL PER QQ-N-290.  
GOLD PER MIL-G-45204, TYPE 1, GRADE C.
- 5. RECOMMENDED PCB THRU HOLE DIA. .036±.003.

LEAD FREE PART NUMBER (SEE TABLE)  
SIP050-1 X-[ ]-[XXX]BLF

NOTE RoHS INFORMATION

- The "LF" products meet european union Directives and other country regulations as described in 65-22-008.
- The housing will withstand exposure to 260°C peak temperature for 20 seconds in a wave solder application with a 1.6mm minimum thick circuit board. See application notes/procedures if they are available.
- Packaging spec: see 65-14-920

rev	ecn no	dr	date
A	V00229	DLW	1/10/00
B	V00776	DLW	3/14/00
C	V12453	CRG	10/24/01
D	V03-1035	DAI	09/22/03
E	LS06-0004	LGO	17/01/06
F	LS07-0141	HLE	2007/05/21
G	LS07-0271	HLE	2007/10/29

www.fciconnect.com		surface ISO 1302 <input checked="" type="checkbox"/>	tolerance std ISO 406 ISO 1101	projection 	mm
		TOLERANCES UNLESS OTHERWISE SPECIFIED			
Dr	D. WOLFORD	1/10/00	ANGULAR	0.X	±0.1
Eng	A. VASBINDER	1/10/00	LINEAR	0.XX	±0.1
Chr	A. VASBINDER	1/10/00	0.XX' ±2'	0.XXX	±0.1
Appr	A. VASBINDER	1/10/00	Product family		SOCKET
FCI				SINGLE ROW SIP SOCKET	
title				(LOW PROFILE)	
catalog no				-	
dwg no				58805	
CUSTOMER				sheet 1 of 1	