

PART NO.	"A" ±.020 (±0.5)	"B" DIA. ±.020 (±0.5)	STUD THD. "S"	INSERT THD. "I"	FIG. NO.
QM1	7/16 (11.1)	7/16 (11.1)	#6-32 X 1/4	----	1
QM1T				#6-32 X 3/16	2
QM2			#6-32 X 1/2	----	1
QM2T				#6-32 X 3/16	2
QM3	1/2 (12.7)	9/16 (14.3)	#8-32 X 3/8	----	1
QM3T				#8-32 X 3/16	2
QM4			----	1	
QM4T			#8-32 X 3/16	2	
QM5	3/4 (19.1)	1.0 (25.4)	#1/4-20 X 1/2	----	1
QM5T				#1/4-20 X 3/8	2
QM6		1-1/4 (31.8)	#5/16-18 X 9/16	----	1
QM6T				#5/16-18 X 3/8	2
QM7	9/16 (14.3)	1/2 (12.7)	#10-32 X 3/8	----	1
QM7T				#10-32 X 3/16	2

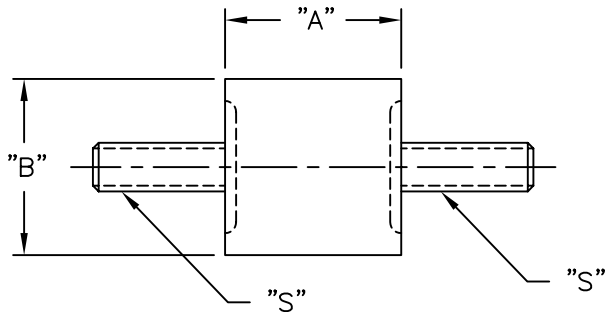


FIG. 1

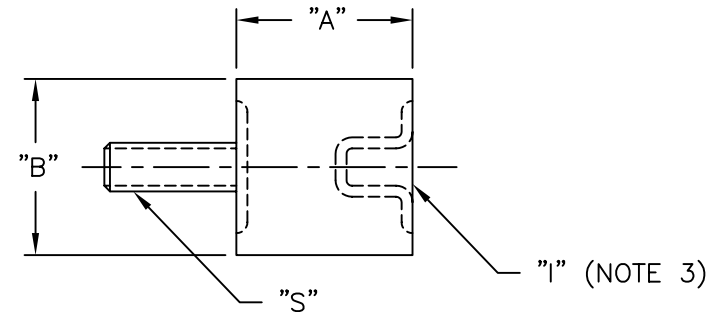





FIG. 2

NOTES:

1. MATERIAL: NATURAL RUBBER, 40 DUROMETER;
THREADED METAL INSERTS,
1010-1020 STEEL YELLOW CHROMATE OVER ZINC PLATE.
2. COLOR: BLACK.
3. THREADED METAL INSERT MAY BE BLIND CUP,
OR THROUGH-NUT.

TITLE: QUIET MOUNT SPACERS			  DWG IN IN (MM)					
C	UPDATED NOTES AND ADDED NOTE 3.	SM 08.08.02	TOLERANCES UNLESS NOTED .XX=±.010 .XXX=±.005 FRAC=±1/64 ANG=±1'	FILE # QM	DWN: P.B.	APP:	FINAL	
B	CHANGED FILE NO. AND MODIFIED TABLE	SM 10.19.01	RE: RICHCO, INC.	MAT'L: SEE NOTES	DT: 04-18-94	DT:	PART # SEE TABLE	PRINT TYPE CA
A	P/N QM-2 & QM-2T 1/2 WAS 1/4	JB 04.24.96		RICHCO INC. PO BOX 804238, CHICAGO, 60680 (773) 539-4060				
REV	DESCRIPTION	ENGR DATE						