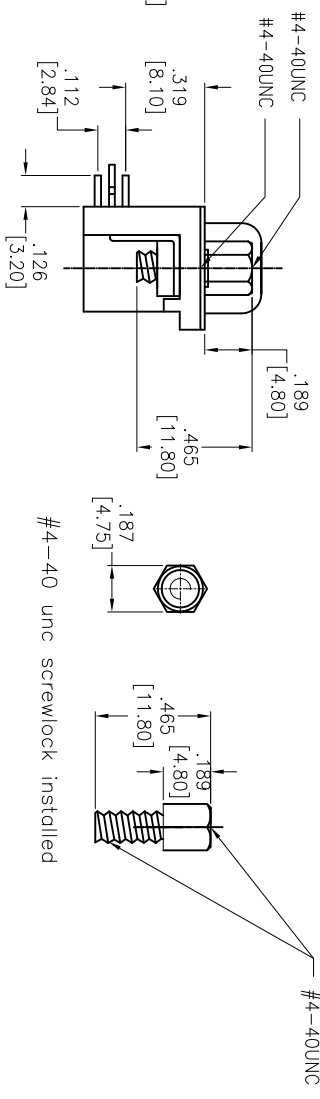
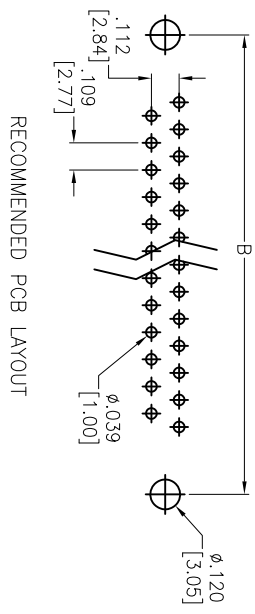
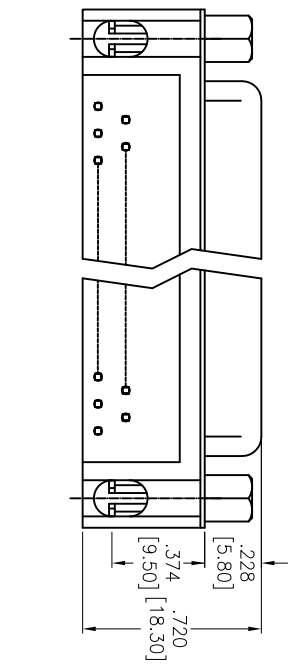
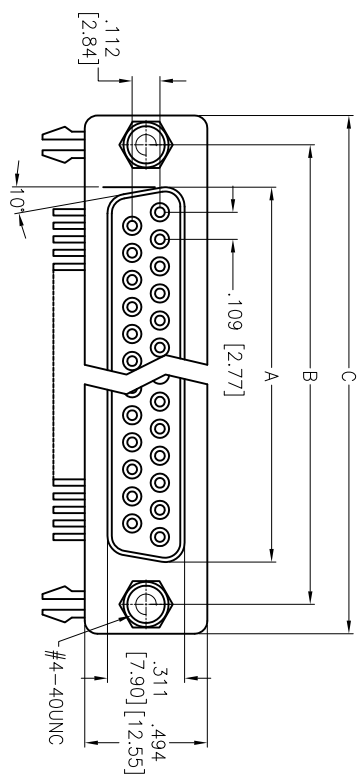


APPROVED: _____
 DATE: _____ TITLE: _____

Rev	AWO #	Description	Date	Appr
-		RELEASED	4/19/05	
A		CHART REVISION	7/29/13	



DXXX	NO. OF CONTACTS	DIMENSIONS		
		A	B	C
DE09	9	.643 [16.33]	.984 [24.99]	1.213 [30.81]
DA15	15	.971 [24.66]	1.312 [33.32]	1.541 [39.14]
DB25	25	1.493 [38.38]	1.852 [47.04]	2.088 [53.04]
DC37	37	2.159 [54.84]	2.500 [63.50]	2.729 [69.32]

SPECIFICATIONS:
 Material: Insulator: PBT, glass reinforced, rated UL 94V-0
 Insulator color: Black
 Contacts: Copper Alloy
 Shell: Steel, Tin plated
 Clinch Nut: Brass, Nickel plated
 Boardlock: Brass, Tin plated
 Screwlock: Brass, Nickel plated
 Plating: Gold over Nickel underplate on contact area
 Electrical: Operating voltage: 250 VAC max
 Current rating: 3 Amps max
 Contact resistance: 20 mohms max
 Insulation resistance: 1,000 Mohms min
 Dielectric withstanding voltage: 1,000 VAC for 1 minute
 Environmental: Lead free, RoHS compliant

ADAM TECH

909 Railway Avenue, Union, NJ 07083
 Phone: 908-687-5000 Fax: 908-687-5710

TITLE: .318 [8.08] FOOTPRINT D-SUB SOCKET
 FORKED BOARDLOCKS, #4-40 INSERTS

UNLESS OTHERWISE SPECIFIED ALL DIMENSIONS ARE INCHES [MM]	909 Railway Avenue, Union, NJ 07083
TOLERANCES: EXCEPT AS NOTED	Phone: 908-687-5000 Fax: 908-687-5710
INCHES	
HOLES	
.X ± .10 ØXX ± .10	
.XX ± .020 ØXXX ± .015	
.XXX ± .015 ØXXXX ± .010	
APPROVALS	DATE
DRAWN SS	4/19/05
CHECKED	
APPROVED	
SIZE X	PART NO. DXXX-SL-25
REF: S00087T	SCALE: NTS
	SHEET 1 OF 1

