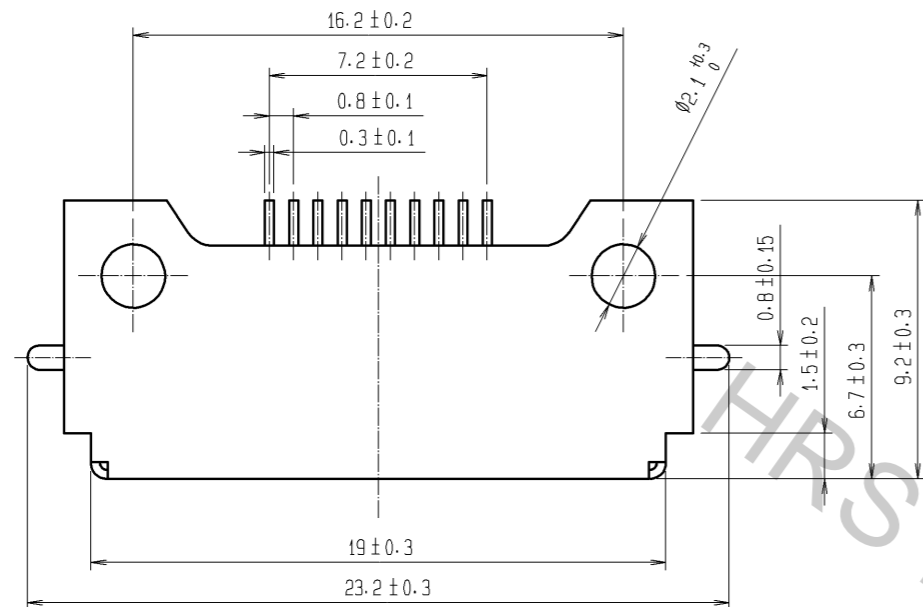
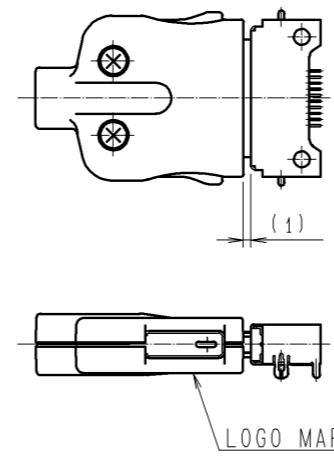


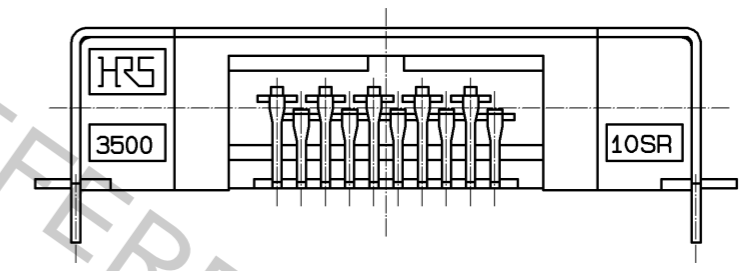
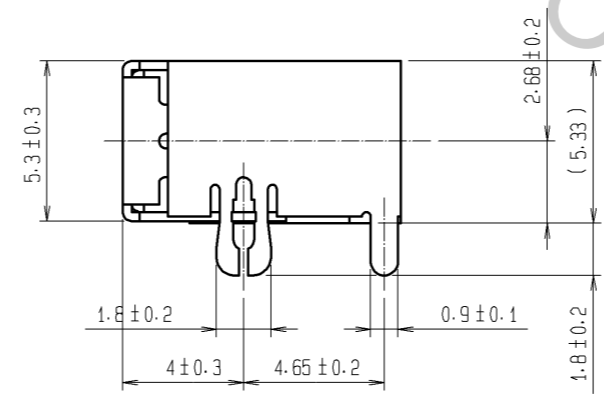
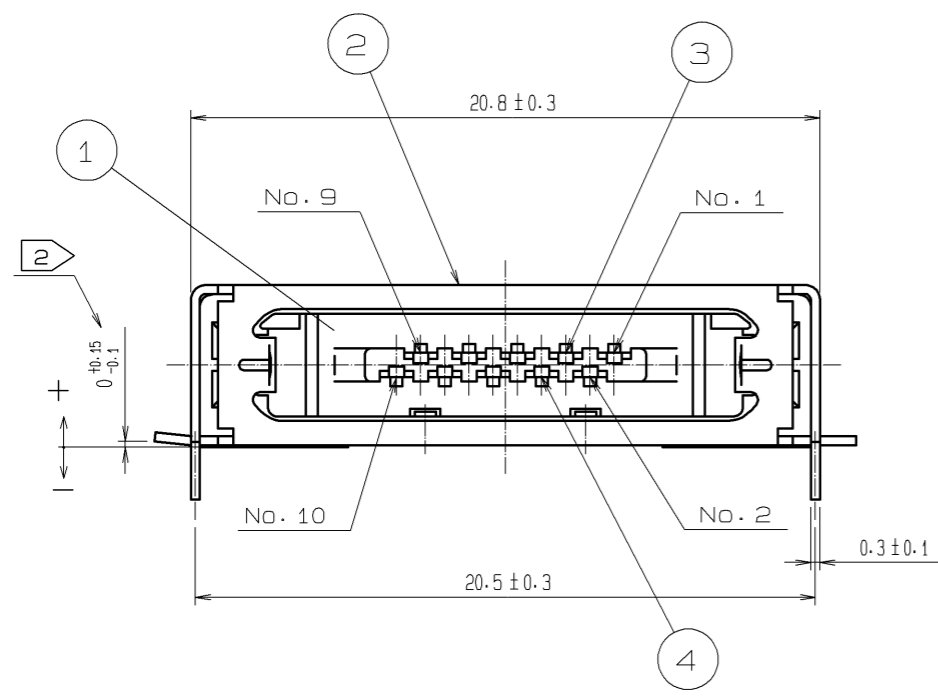
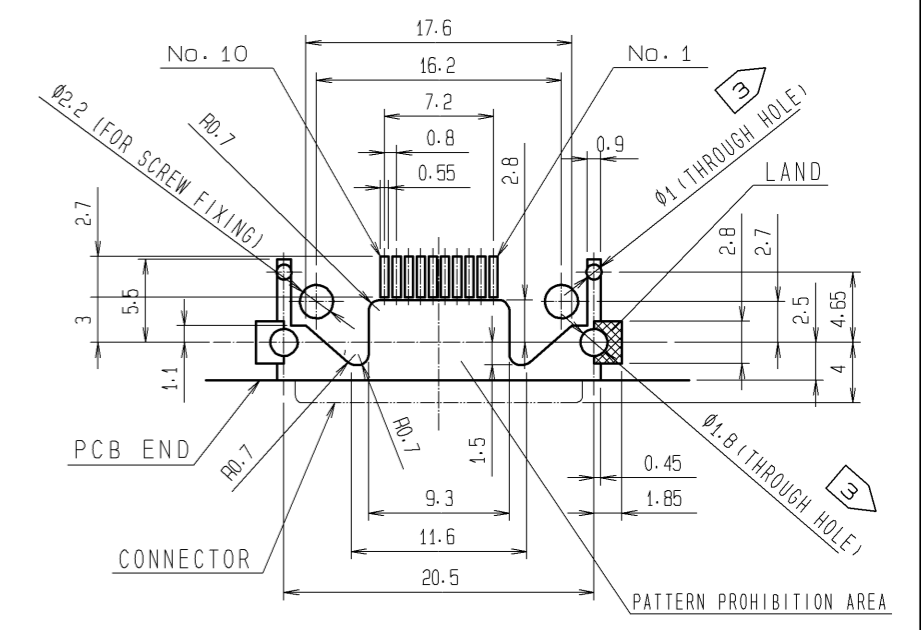
Apr.1.2017 Copyright 2017 HIROSE ELECTRIC CO., LTD. All Rights Reserved.



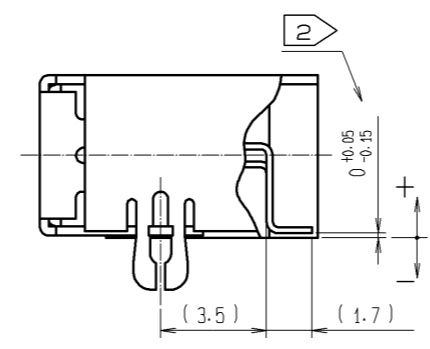
1 MATED WITH PLUG (1:1)



RECOMMENDED PCB PATTERN (2:1)  
(APPLICABLE BOARD THICKNESS 0.8~1.6)



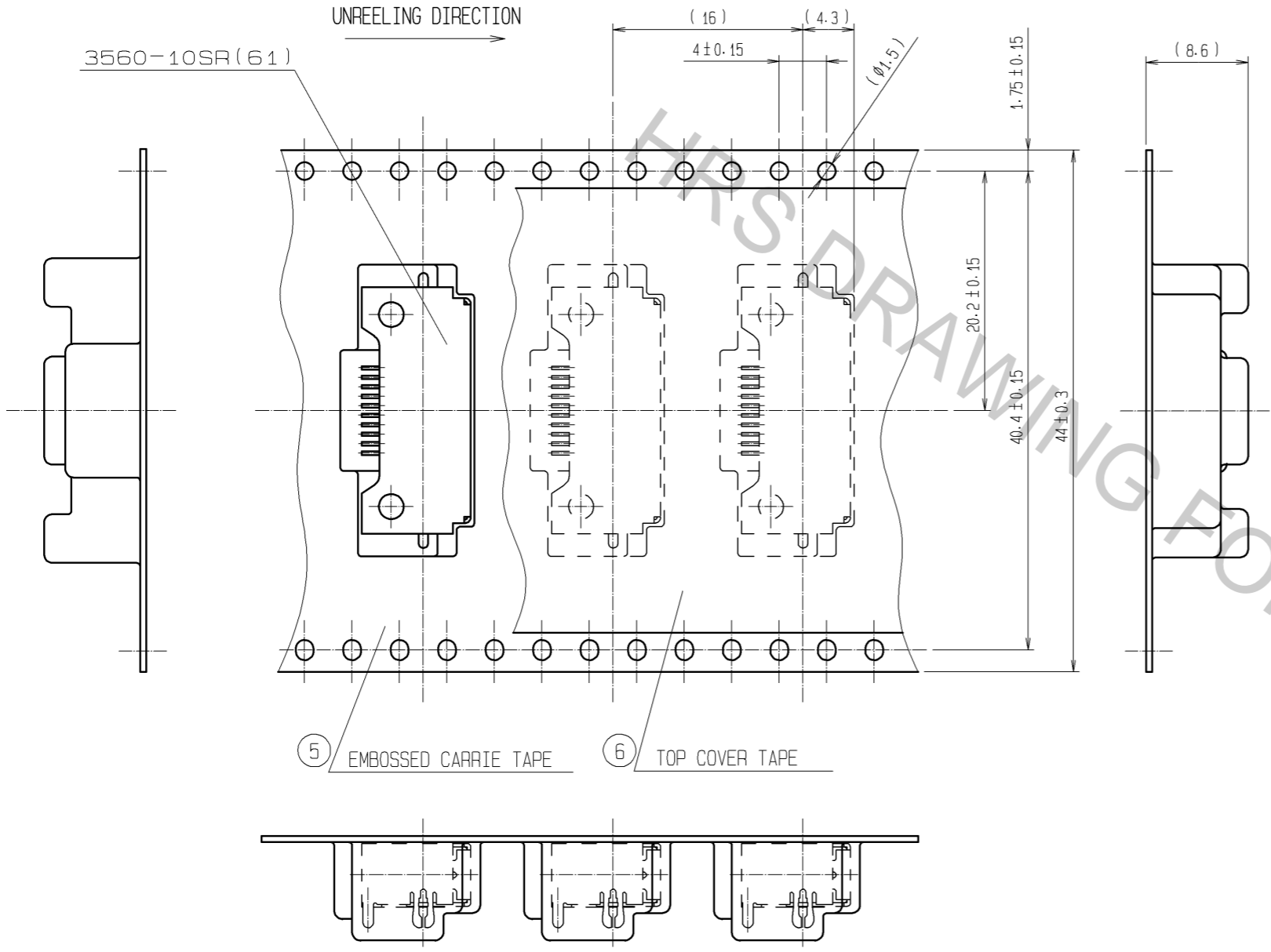
SMT CONTACT DIMENSION



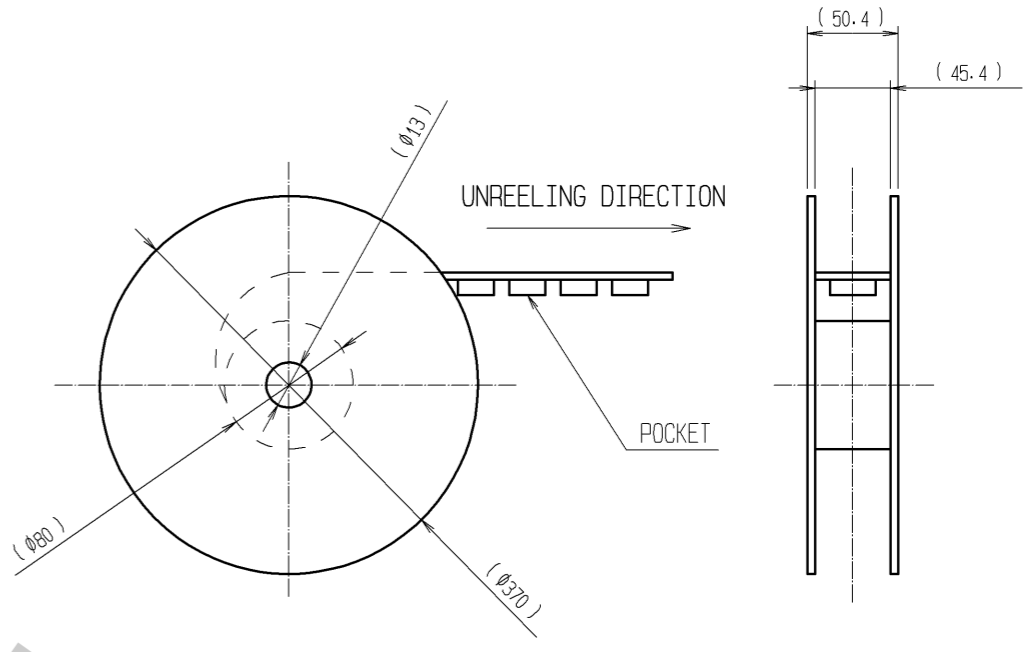
- NOTE 1 LOGO MARKING DIRECTION AFTER MATING(WITH PLUG) SHALL BE AS SHOWN IN FIGURE-1.  
 2 DIMENSION FOR SMT PART CONTACT (REFERENCE NO.③・④)AND S SHELL (REF.NO.②) SHALL BE AS SHOWN IN FIGURE.  
 3 IN CASE OF VACUUMMOUNTING, Ø1.8 SHALL BE Ø2 MIN, Ø1 SHALL BE Ø1.2 MIN.

3	COPPER ALLOY	SELECTIVE GOLD PLATING 0.2µm	6	PS			
2	STAINLESS STEEL	TIN REFLOW PLATING	5	PS			
1	POLYAMIDE	COLOR:BLACK UL94V-0	4	COPPER ALLOY	SELECTIVE GOLD PLATING 0.2µm		
NO.	MATERIAL	FINISH . REMARKS	NO.	MATERIAL	FINISH . REMARKS		
UNITS mm		SCALE 4 : 1	COUNT	DESCRIPTION OF REVISIONS	DESIGNED	CHECKED	DATE
HRS HIROSE ELECTRIC CO., LTD.		APPROVED : HO. MIWA	07.02.01	DRAWING NO.	EDC3-120710-02		
		CHECKED : HO. MIWA	07.02.01	PART NO.	3560-10SR(61)		
		DESIGNED : SJ. SHIMIZU	07.02.01	CODE NO.	CL235-0008-2-61		
		DRAWN : SJ. SHIMIZU	07.02.01		1/2		

4> FIGURE OF PACKAGED CONNECTOR CONDITION



5> FIGURE PF TAPE AND REEL CONDITION (FREE)



NOTE 4> CONNECTOR STORAGE STATUS SHALL BE AS SHOWN IN FIGURE.  
 5> TAPE AND REEL CONDITION SHALL BE AS SHOWN IN FIGURE  
 AND NUMBER OF CONNECTOR STORAGE PER REEL :500 PCS.

<b>HRS</b>	DRAWING NO.	EDC3-120710-02	△ 2/2
	PART NO.	3560-10SR(61)	
	CODE NO.	CL235-0008-2-61	