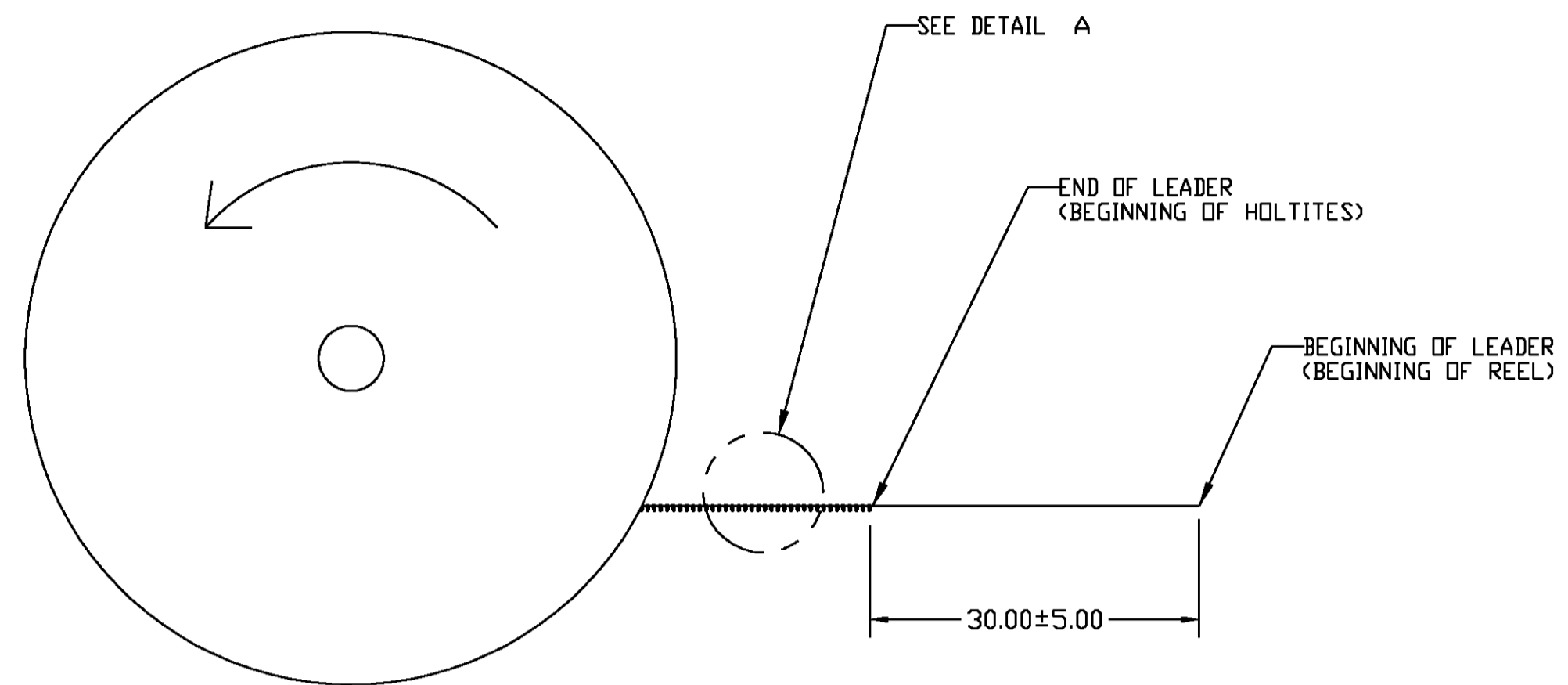
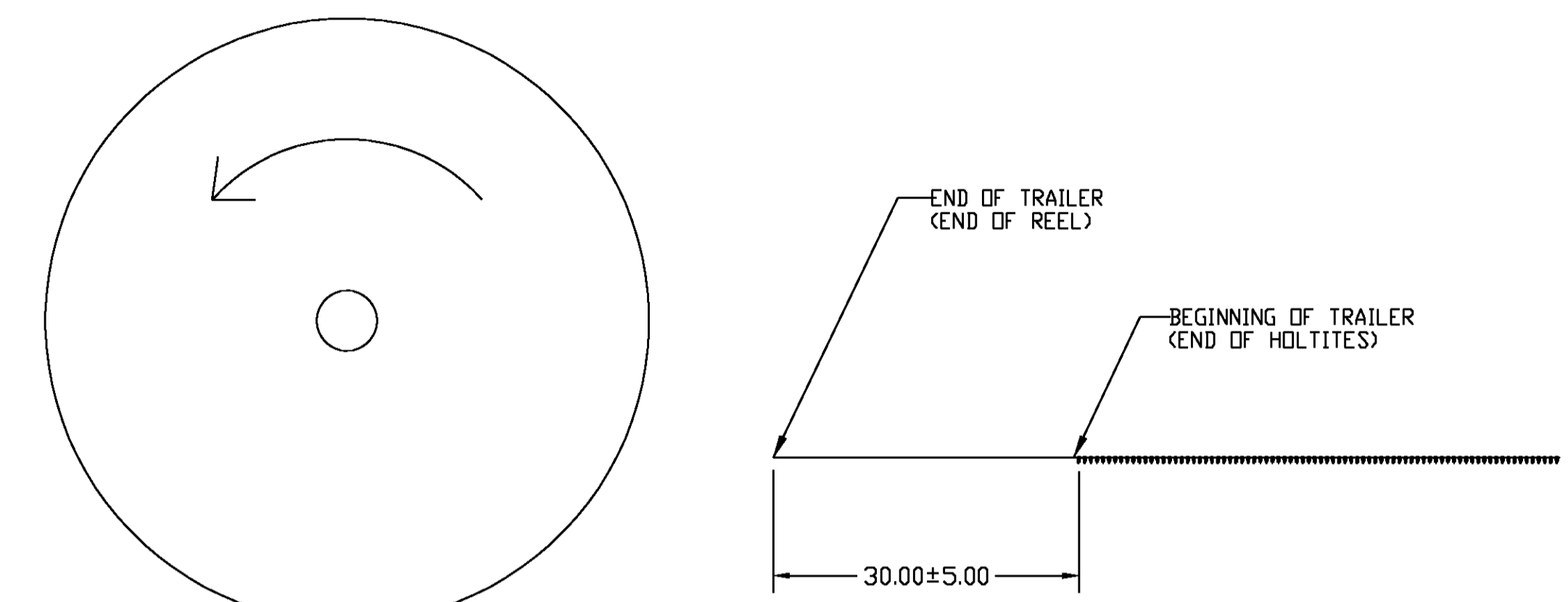


THIS DRAWING IS UNPUBLISHED. RELEASED FOR PUBLICATION BY TYCO ELECTRONICS CORPORATION. ALL RIGHTS RESERVED.

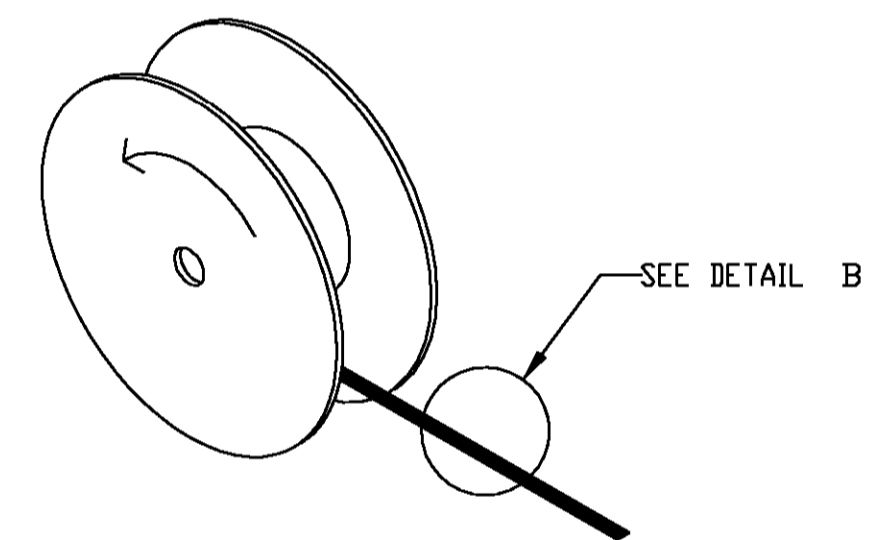
| LOC | | DIST | | REVISIONS | | | |
|-----|----|----------------------|---------|-----------|------|--|--|
| P | LR | DESCRIPTION | DATE | DR | APPD | | |
| A | | REV PER 0G3C-0430-00 | 26OCT00 | BH | KW | | |



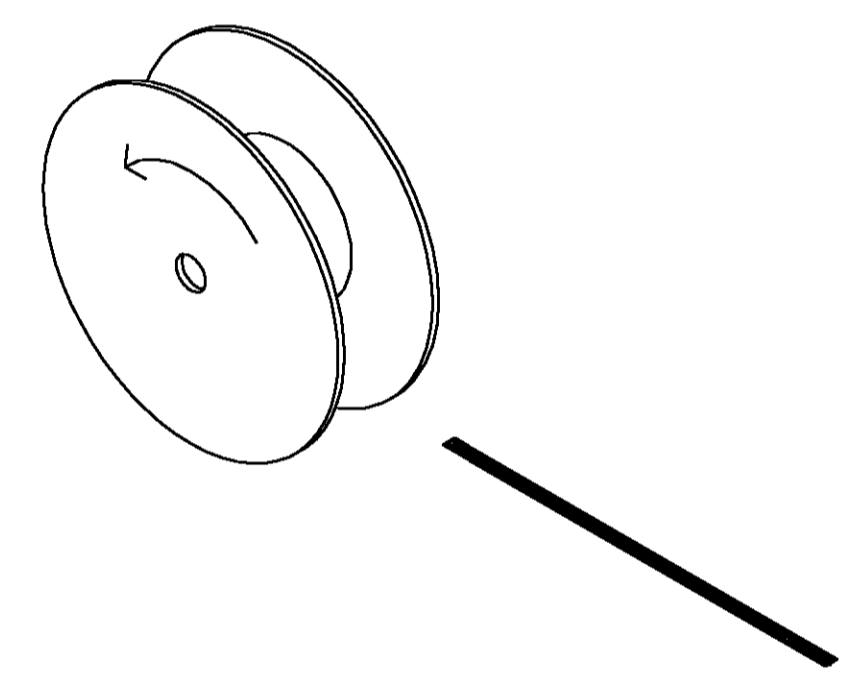
LEADER + BEGINNING OF REEL



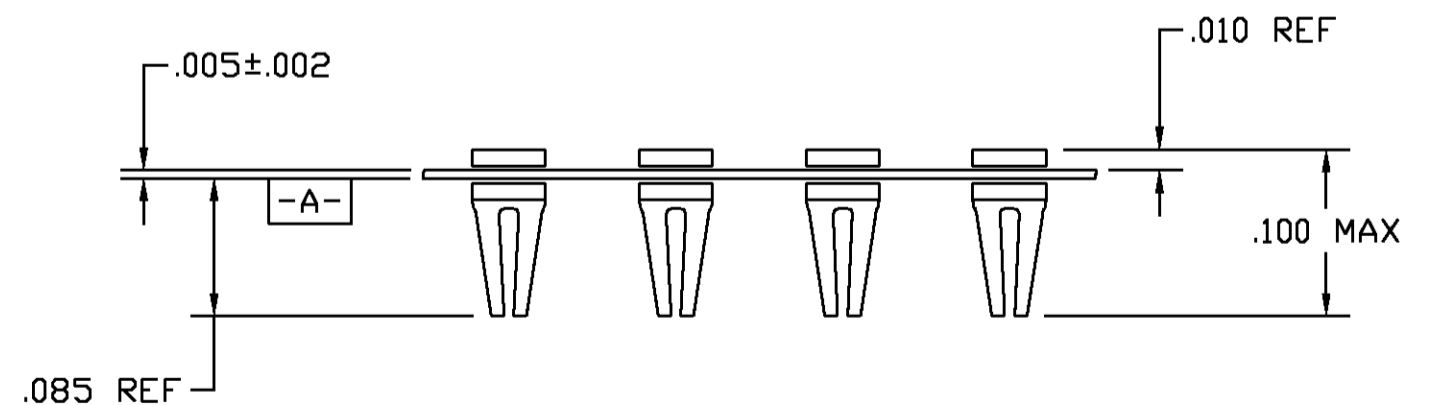
TRAILER + END OF REEL



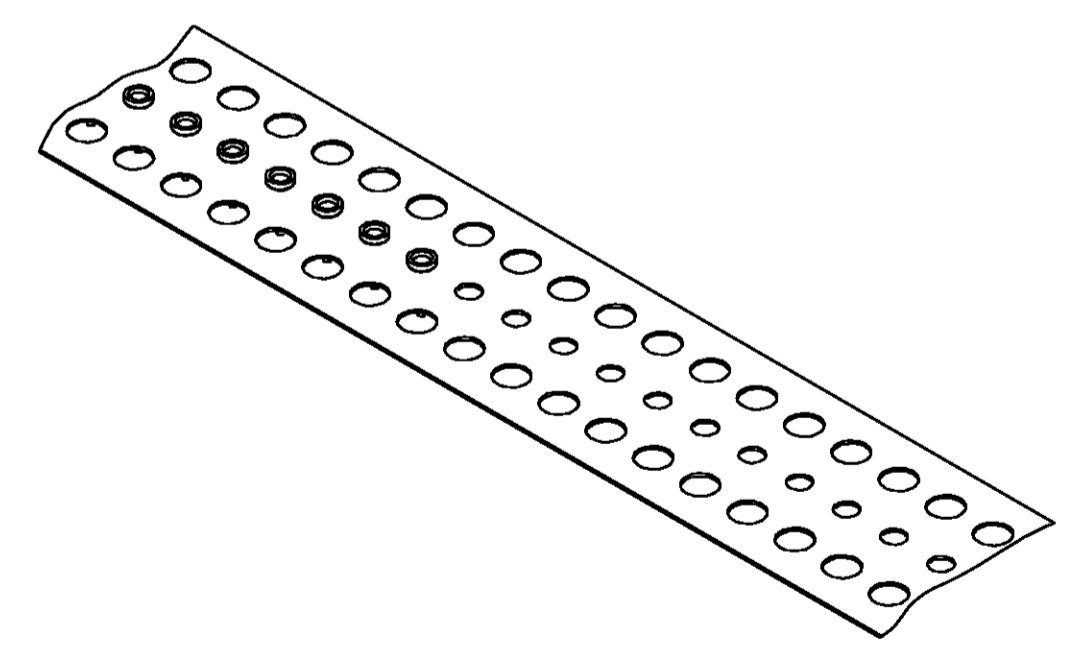
LEADER + BEGINNING OF REEL



TRAILER + END OF REEL



DETAIL A
MYLAR STRIP LOADED WITH HOLTITES
(SAMPLE VIEW FOR HOLTITE ORIENTATION PURPOSES)



DETAIL B
PARTIALLY LOADED MYLAR STRIP
(END OF *LEADER*)

NOTES FOR ASSEMBLED REEL:

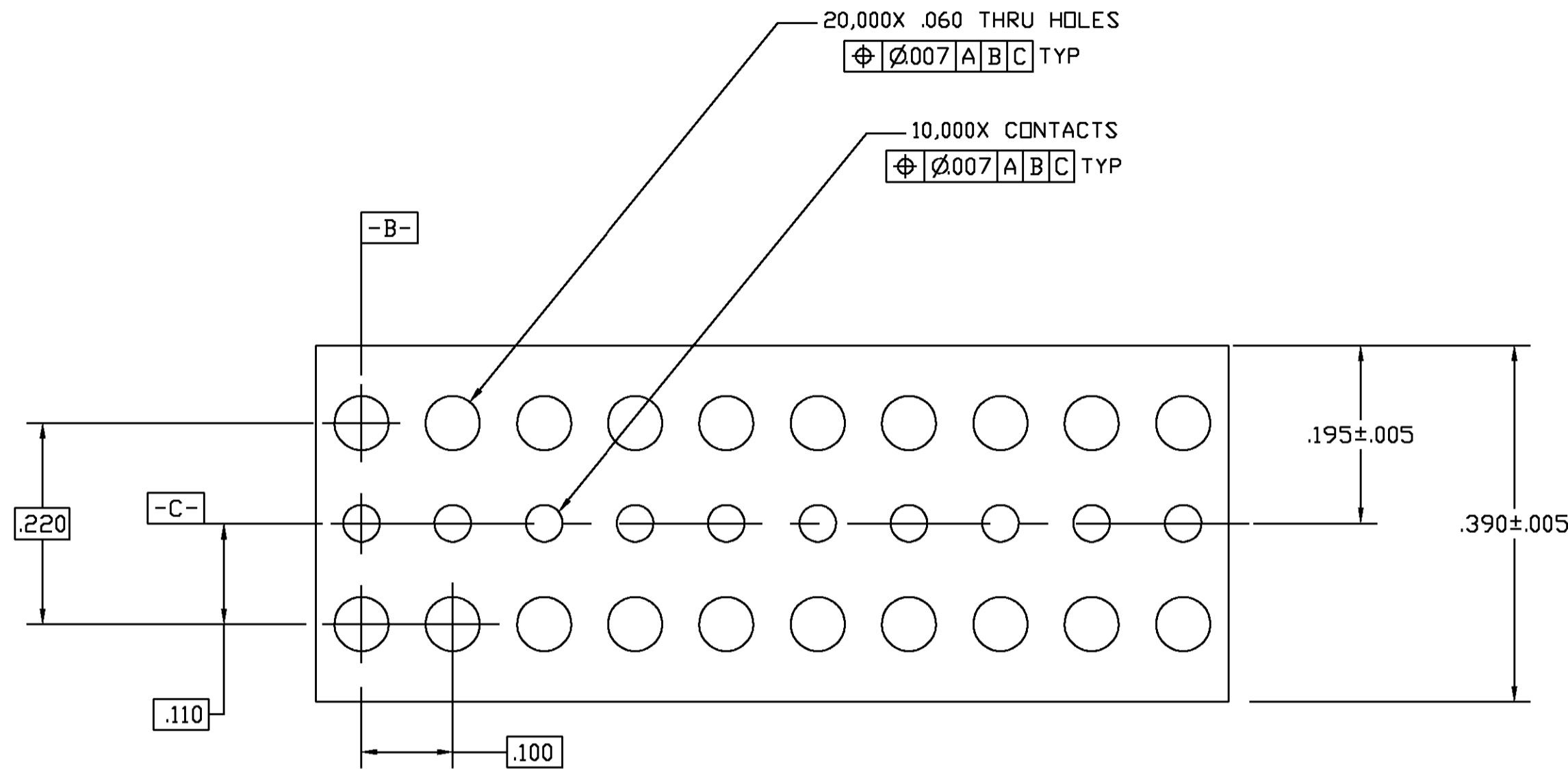
1. ASSEMBLED REEL LOADED WITH 10,000 HOLTITES. HOLTITE DESCRIPTION: 80-200 MICROINCHES TIN-LEAD OVER 75-100 MICROINCHES COPPER UNDERPLATE; ACCEPTS .016-.021 DIAMETER OR .011-.018 RECTANGULAR LEAD; RECOMMENDED FINISHED PLATED THRU-HOLE IN PCB TO BE .041 ± .002; AND RECOMMENDED FINISHED PCB HOLE PLATING TO BE .0003-.0005 TIN-LEAD OVER .001 COPPER PLATE.
2. KRAFT PAPER (.004 THICK) SHOULD BE USED AS A SPACER BETWEEN EACH LAYER OF HOLTITES.
3. NO SPLICES PERMITTED ANYWHERE ON MYLAR TAPE.
4. MAXIMUM OF ONE BREAK PER REEL ALLOWED IN THE MYLAR TAPE.
5. ALL BREAKS SHOULD FOLLOW THE SAME REQUIREMENTS FOR *LEADER* AND *TRAILER* AS IF IT WERE A NEW/COMPLETE REEL WITH NO BREAKS.

PART NUMBER 147504-1 AS SHOWN

| | | | | |
|--|-----------|------------------|---------|--|
| THIS DRAWING IS A CONTROLLED DOCUMENT. | | DR: R BROWN | 25SEP00 | AMP Tyco Electronics Corporation Harrisburg, PA 17105 |
| DIMENSIONS: INCHES | | CHK: K WRIGHT | 25SEP00 | |
| TOLERANCES UNLESS OTHERWISE SPECIFIED: | | APD: K WRIGHT | 25SEP00 | HOLTITE REEL ASSEMBLY HOLTITES ON MYLAR ON REEL |
| 0 PLC | ± .005 | PRODUCT SPEC | | |
| 1 PLC | ± .002 | APPLICATION SPEC | | SIZE: A1 |
| 2 PLC | ± .001 | | | CAGE CODE: 00779 |
| 3 PLC | ± .010 | | | DRAWING NO: 147504 |
| 4 PLC | ± .0005 | | | RESTRICTED TO: - |
| ANGLES | ± 0.1 | | | SCALE: NTS |
| MATERIAL: - | FINISH: - | WEIGHT: - | | SHEET 1 OF 2 |
| CUSTOMER DRAWING | | | | REV: A |

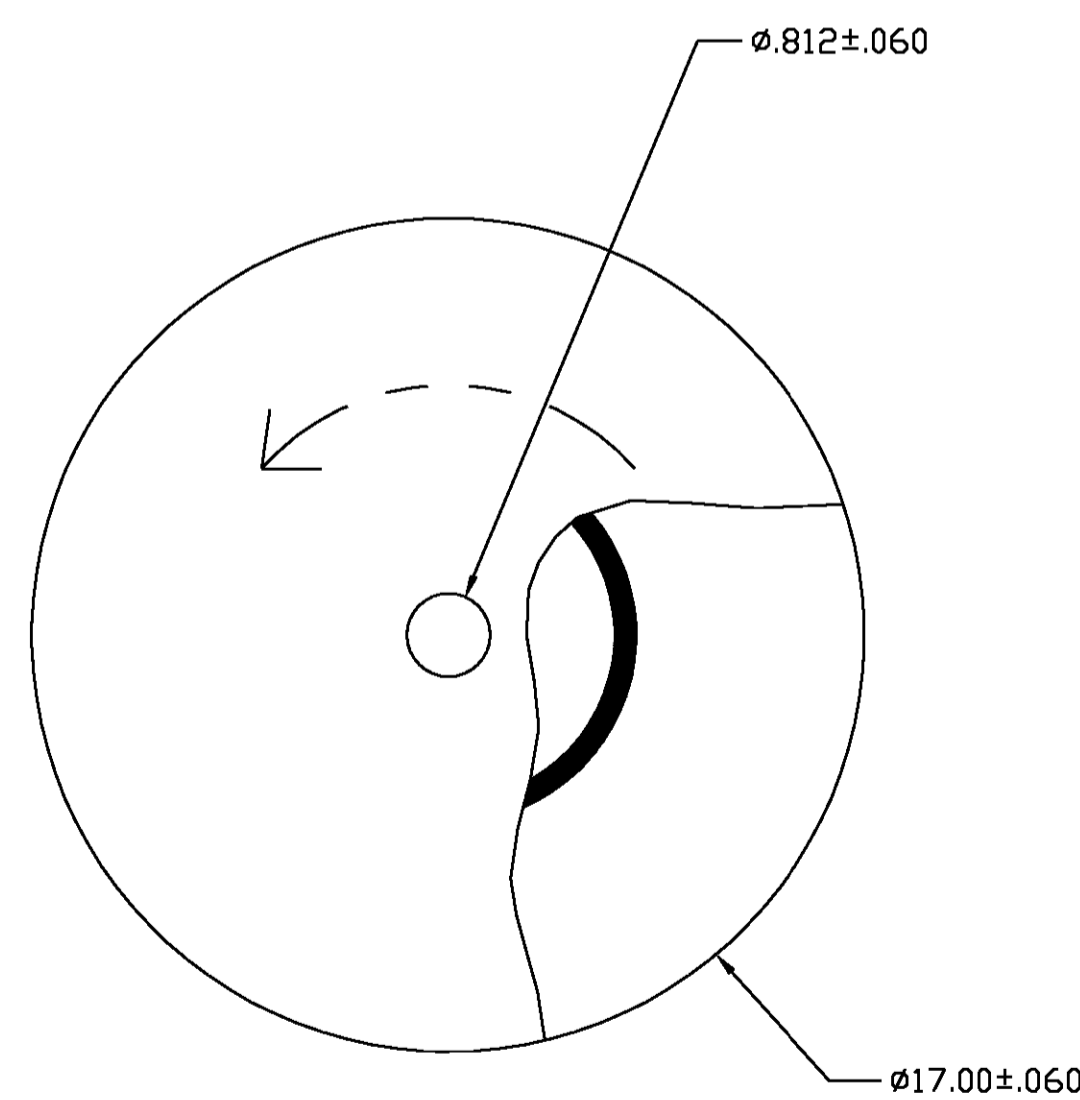
THIS DRAWING IS UNPUBLISHED. RELEASED FOR PUBLICATION. BY TYCO ELECTRONICS CORPORATION. ALL RIGHTS RESERVED.

| LOC | | DIST | | REVISIONS | | | |
|-----|----|-------------|------|-----------|-----|---|---|
| P | LR | DESCRIPTION | DATE | DR | APD | | |
| - | - | SEE SHEET 1 | - | - | - | - | - |

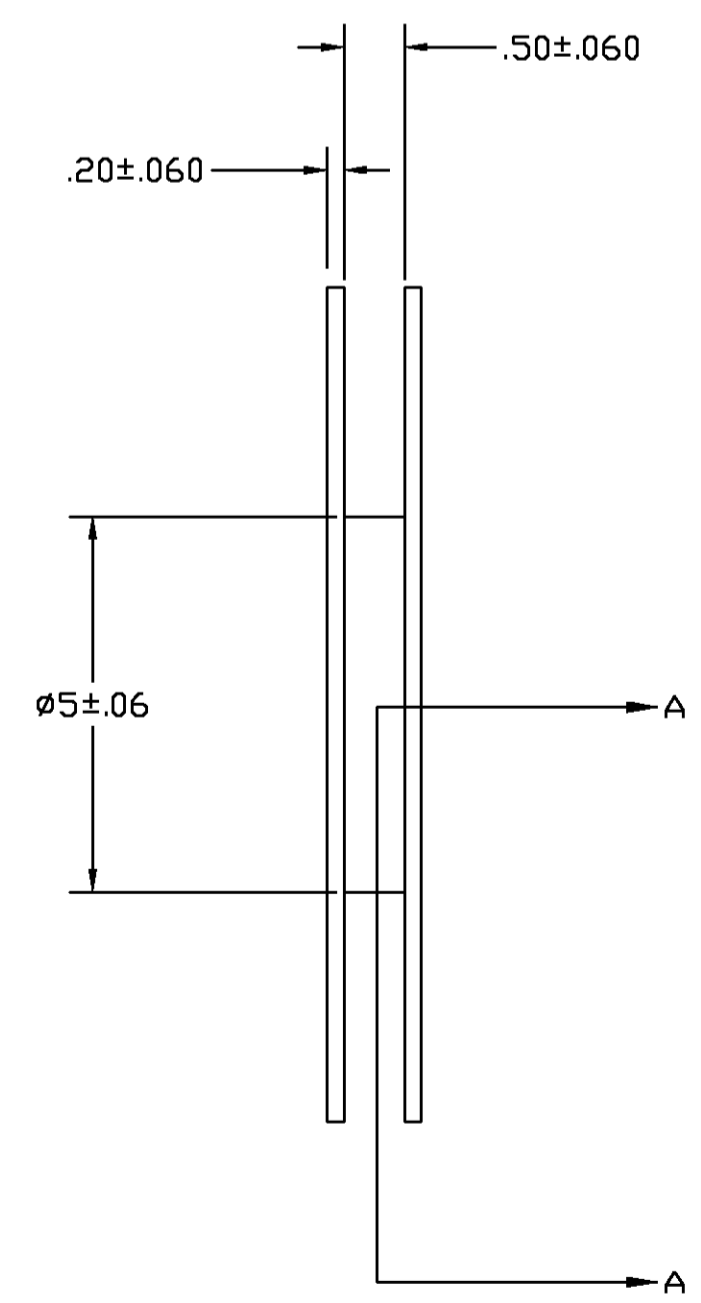


MYLAR TAPE
(SAMPLE VIEW FOR MYLAR TAPE PUNCH PATTERN)

- NOTES FOR MYLAR TAPE:
1. MATERIAL: MYLAR
 2. DATUM 'A' IS DEFINED AS THE BOTTOM SURFACE OF THE MYLAR TAPE (AS SHOWN IN DETAIL A ON SHEET 1).
 3. DATUM B AND C ARE DEFINED AS THE CENTER OF THE HOLE PUNCHED FOR THE HOLTITES.
 4. THESE DIMENSIONS AND TOLERANCES APPLY BEFORE AND AFTER THE TAPE HAS BEEN LOADED WITH HOLTITES.
 5. MYLAR TAPE SHOULD HAVE 30' OF LEADER (PUNCHED TAPE WITH NO HOLTITES)
 6. MYLAR TAPE SHOULD HAVE 30' OF TRAILER (PUNCHED TAPE WITH NO HOLTITES)
 7. 10,000 HOLTITES SHOULD BE LOADED INTO THE MYLAR TAPE.
 8. NO SPLICES PERMITTED ANYWHERE ON THE MYLAR TAPE.
 9. MAXIMUM OF ONE BREAK PER REEL ALLOWED IN THE MYLAR TAPE.
 10. ALL BREAKS SHOULD FOLLOW THE SAME REQUIREMENTS FOR 'LEADER' AND 'TRAILER' AS IF IT WERE A NEW/COMPLETE REEL WITH NO BREAKS.



SECTION A-A
(DIMENSION FOR HOLTITE REEL)



- NOTES FOR REEL:
1. MATERIAL: CARDBOARD.

| | | | | | |
|--|--------------|------------------|---------|--|--------------------|
| THIS DRAWING IS A CONTROLLED DOCUMENT. | | DRN R BROWN | 25SEP00 | AMP Tyco Electronics Corporation Harrisburg, PA 17105 | |
| DIMENSIONS: INCHES | | CHK K WRIGHT | 25SEP00 | NAME HOLTITE REEL ASSEMBLY HOLTITES ON MYLAR ON REEL | |
| TOLERANCES UNLESS OTHERWISE SPECIFIED: | | APD K WRIGHT | 25SEP00 | SIZE A1 | |
| 0 PLC ± - | 1 PLC ± - | PRODUCT SPEC | | CAGE CODE 00779 | |
| 2 PLC ± .02 | 3 PLC ± .010 | APPLICATION SPEC | | DRAWING NO 147504 | |
| 4 PLC ± .0005 | ANGLES ± 0.1 | WEIGHT | | RESTRICTED TO | |
| MATERIAL | | FINISH | | CUSTOMER DRAWING | |
| | | | | SCALE NTS | SHEET 2 OF 2 REV A |