

SUMMARY

Wires

| | |
|---------|---|
| Low | 5 |
| High | 0 |
| Coax | 0 |
| Triax | 0 |
| Quad | 0 |
| Fiber | 0 |
| Fluidic | 0 |

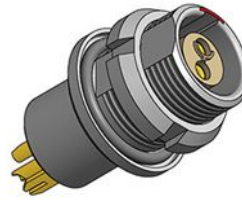


Image is for illustrative purpose only

Download

- [Request a quote](#)
- [PCB Altium Pattern](#)
- [Catalog](#)

| | |
|------------------|-------------------|
| Series | 0T |
| Termination type | Female print PCB |
| IP rating | 68 |
| Cable Ø | 0.00 - 0.00 mm |
| Matching parts | FGG.0T.305.CLAC45 |
| Status | |
| Alternative part | |

TECHNICAL DETAILS

Mechanics

| | |
|-------------------|---|
| Shell Style/Model | HM*: Fixed socket, nut fixing, watertight or vacuumtight, back panel mounting |
| Keying | 1 key (alpha=0, plug: male contacts, receptacle: female contacts) |
| Housing Material | Brass (chrome plated) shell and collet nut, nickel plated brass latch sleeve and mid pieces |
| Cable Fixing | ∅ 0 - 0 mm |
| Variant | P : Watertight |

Performance

| | |
|---------------|----------|
| Configuration | |
| Insulator | |
| Rated Current | 6.5 Amps |

Specifications

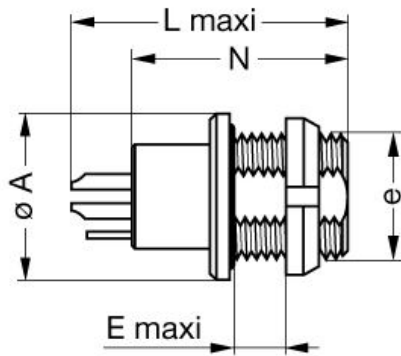
| | |
|---------------|----------------------|
| Contact Type: | Print (straight) |
| Max. Matings: | 5000 |
| Contact Dia.: | 0.7 mm (0.028in) |
| R (max): | 6.1 mOhm |
| Vtest: | 700 V (DC)500 V (AC) |

Others

Temp (min / max): -55° C / +200° C
Humidity (max): <=95% [at 60 deg C / 140 F]
Vibration: 15 g [10 Hz - 2000 Hz]
Shock Resistance: 100 g [6 ms]
Salt Spray Corrosion: >144 hr
Climatical Category: 50/175/21
Shielding (min): 75 dB (10 MHz)
Shielding (min): 40 dB (1 GHz)
IP Rating: 68

DRAWINGS

Draws



Dimensions

| | A | B | C | E | L | N | e |
|-----|------|------|------|------|------|------|--------|
| mm. | 12 | 8.3 | 9.1 | 6.5 | 22 | 18.5 | M9x0.6 |
| in. | 0,47 | 0,33 | 0,36 | 0,26 | 0,87 | 0,73 | |

RECOMMENDED BY LEMO

Tools

None

Cables