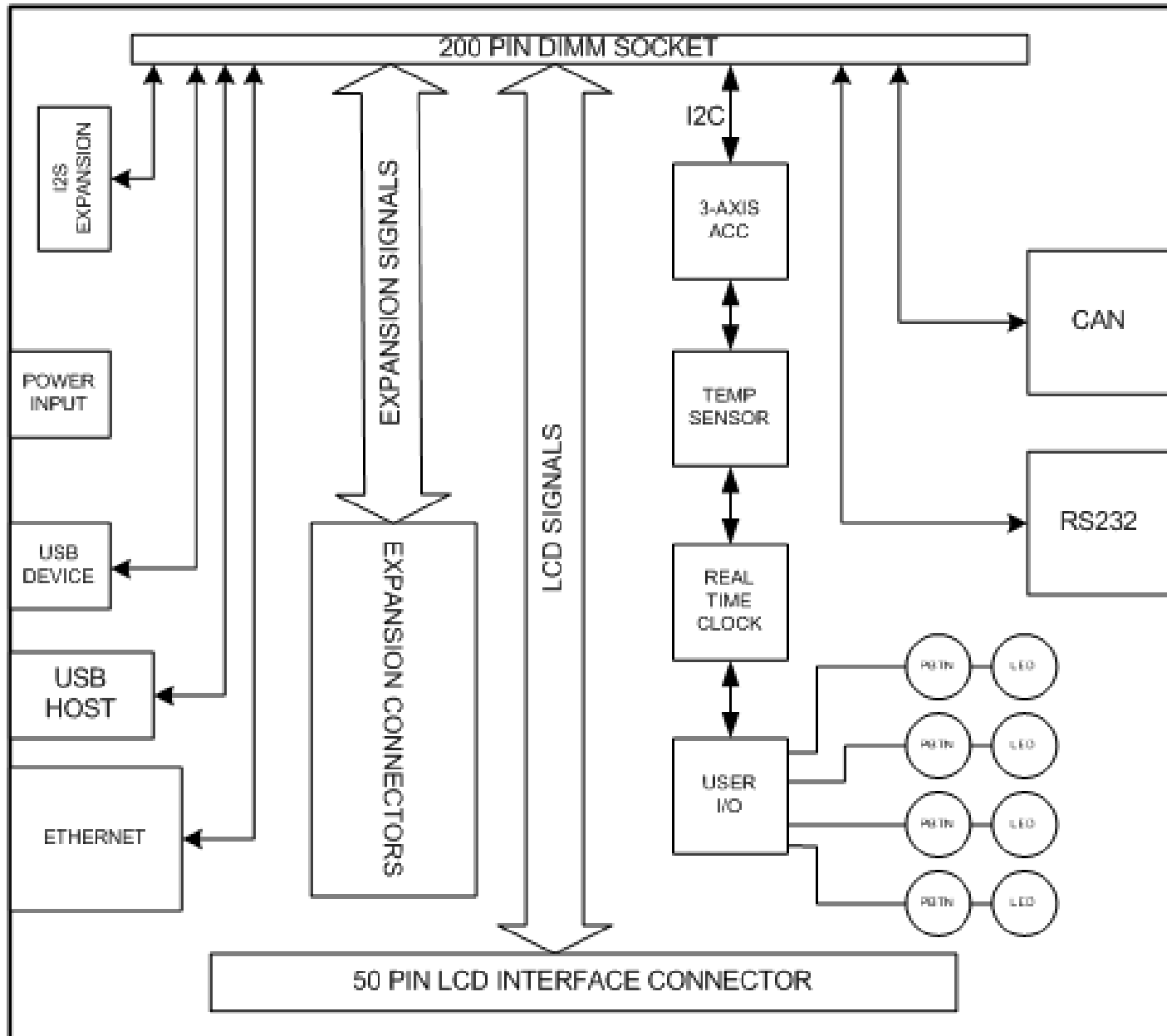
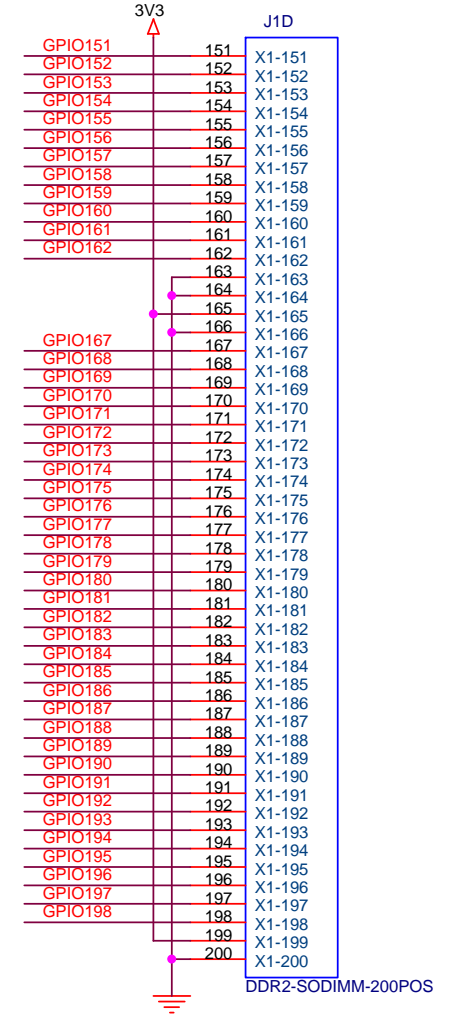
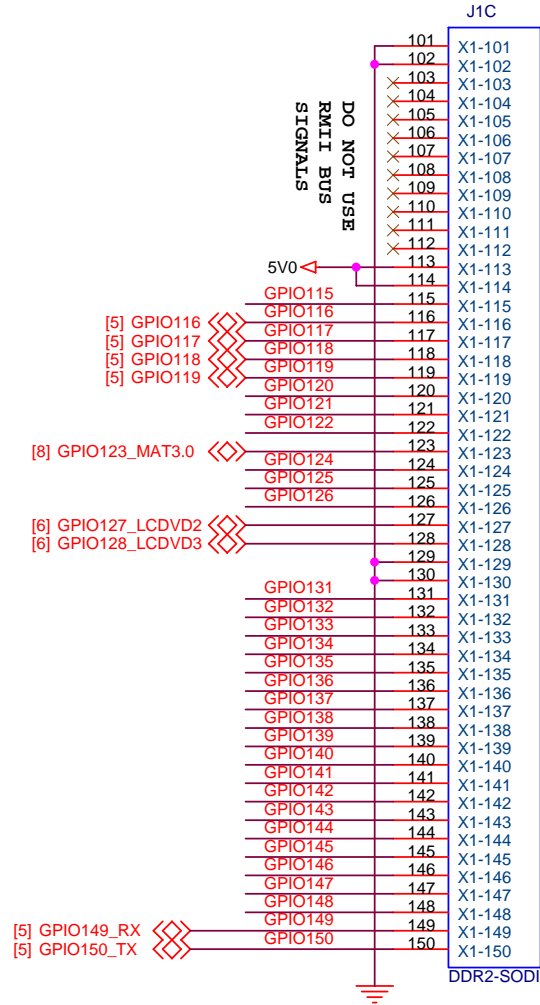
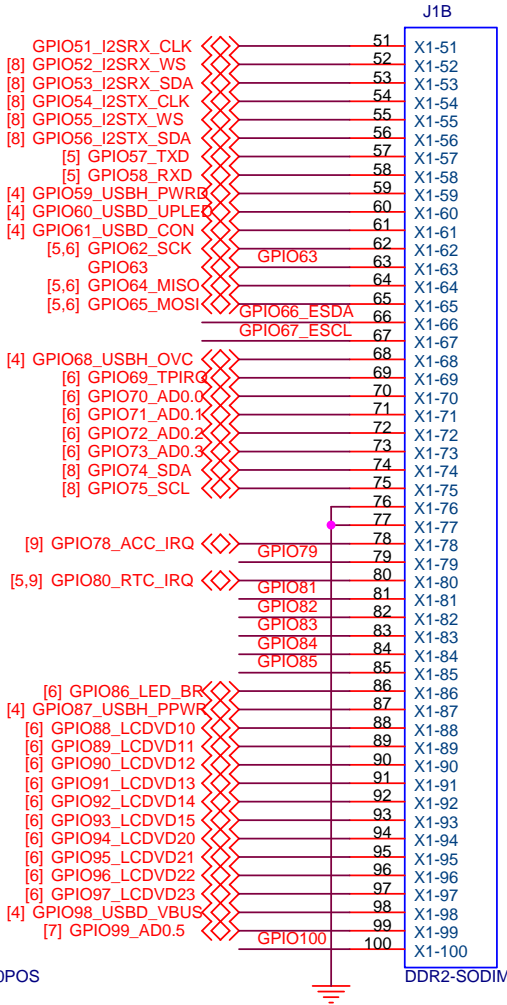
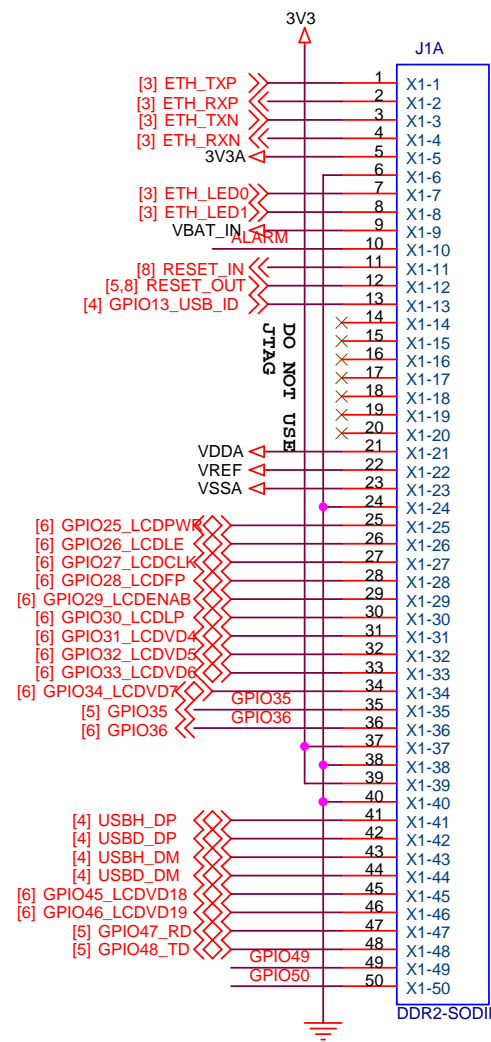


REVISION HISTORY		
DATE	REV	DESCRIPTION
01/14/09	1	INITIAL RELEASE
03/09/09	1.1	CORRECT USB HOST PULLDOWN VALUES
08/20/09	2	CORRECT ETHERNET LEDS, ADDED I2C AUDIO ADDED RS485, WIFI
9/8/09	2.1	CORRECT I2S AUDIO SIGNALS
9/14/09	2.2	DNL I2S AUDIO CIRCUITRY
10/22/09	2.3	CORRECT RS485 SIGNAL NAMES
9/3/2010	3	CHANGE: I2S AUDIO, ENET MAGJACK, WIFI
11/19/10	3.1	CORRECT MICROPHONE INPUT
11/21/10	4	IMPLEMENT REV 3.1 INTO ARTWORK

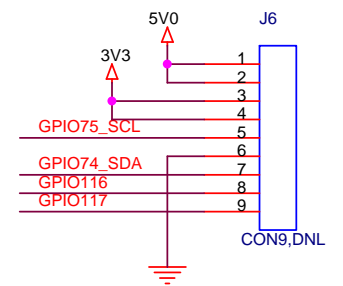
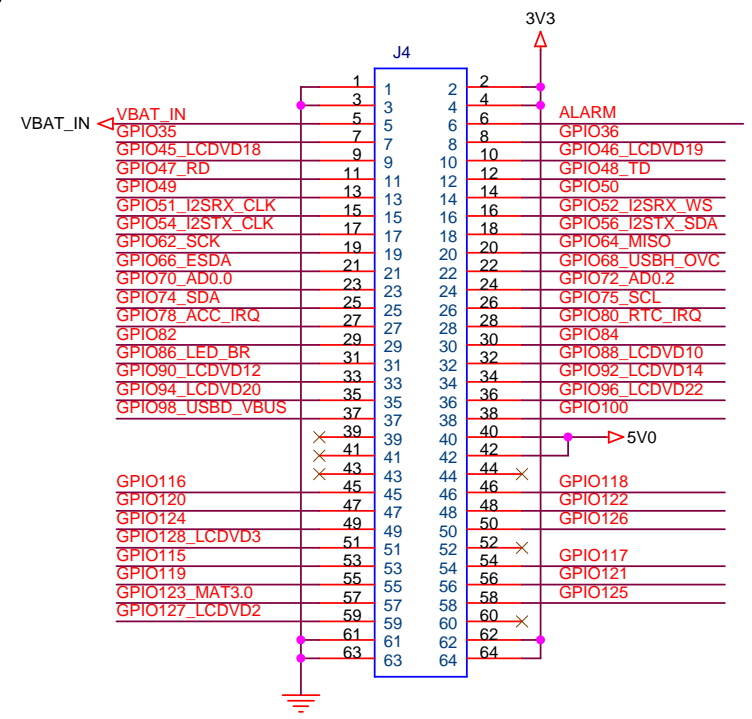
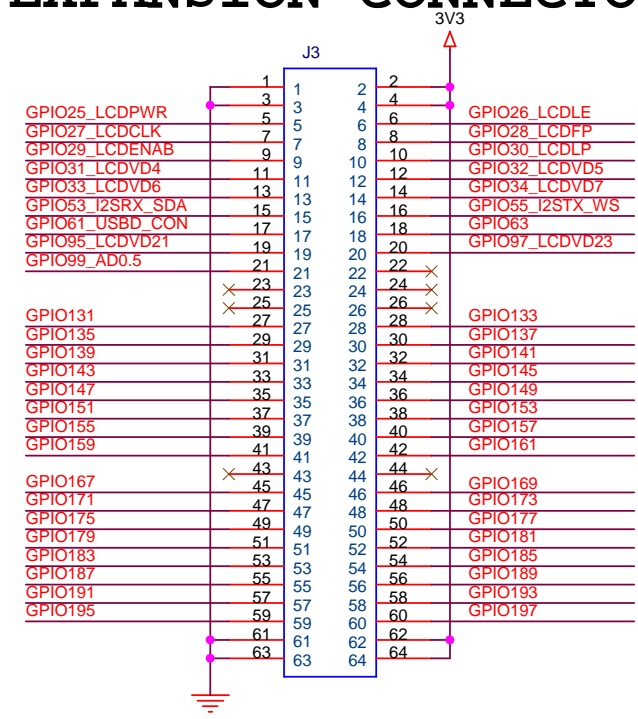
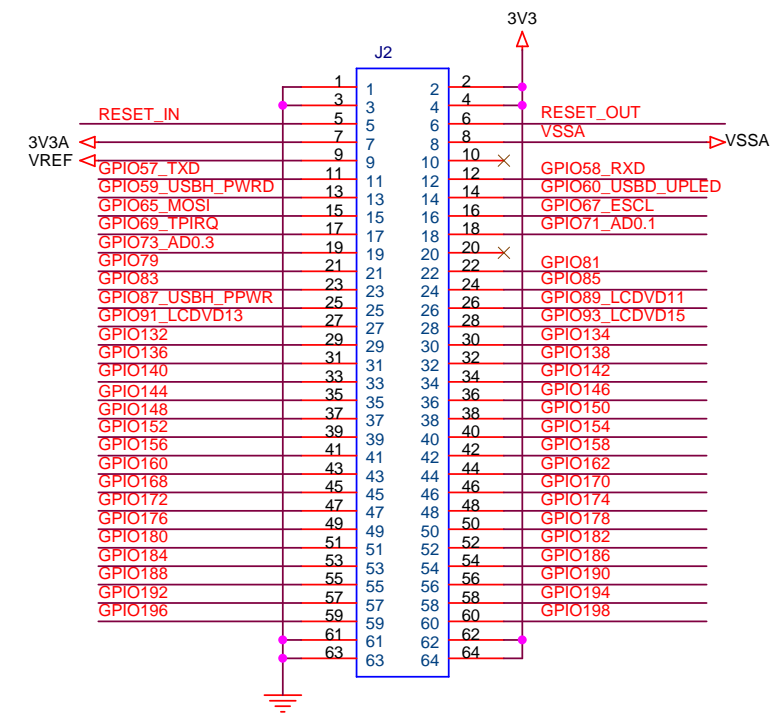


<b>Future Designs, Inc.</b> Huntsville, AL		<b>FDI</b>
Title REV HISTORY/BLOCK DIAGRAM		
Size	Document Number CARRIER BOARD	Rev 4
Date:	Monday, November 22, 2010	Sheet 1 of 9

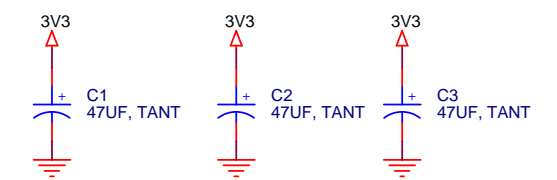


## SOMDIMM SOCKET

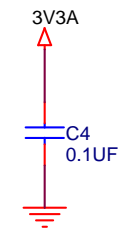
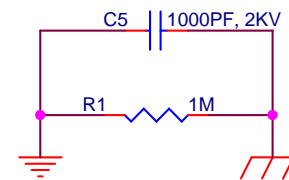
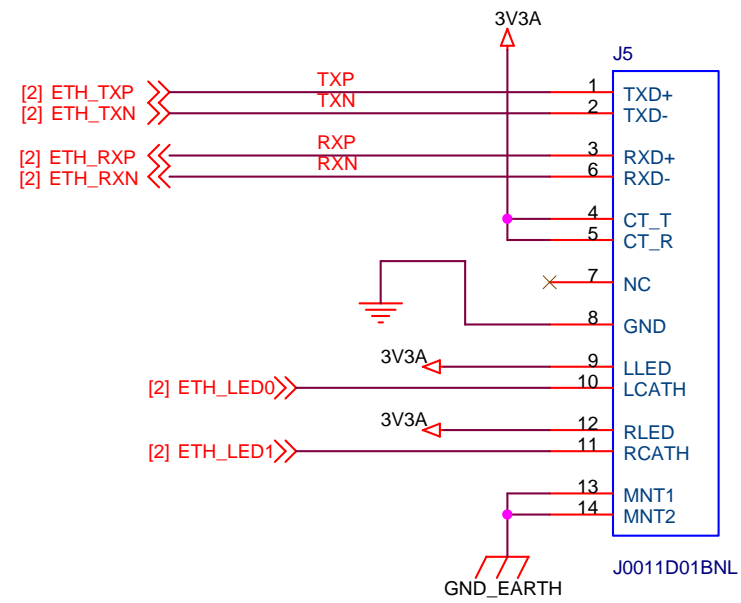
## EXPANSION CONNECTORS



## OPTIONAL EXTERNAL I2C HEADER

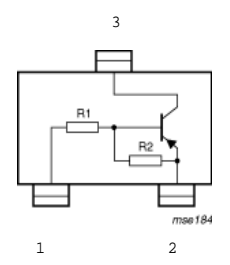
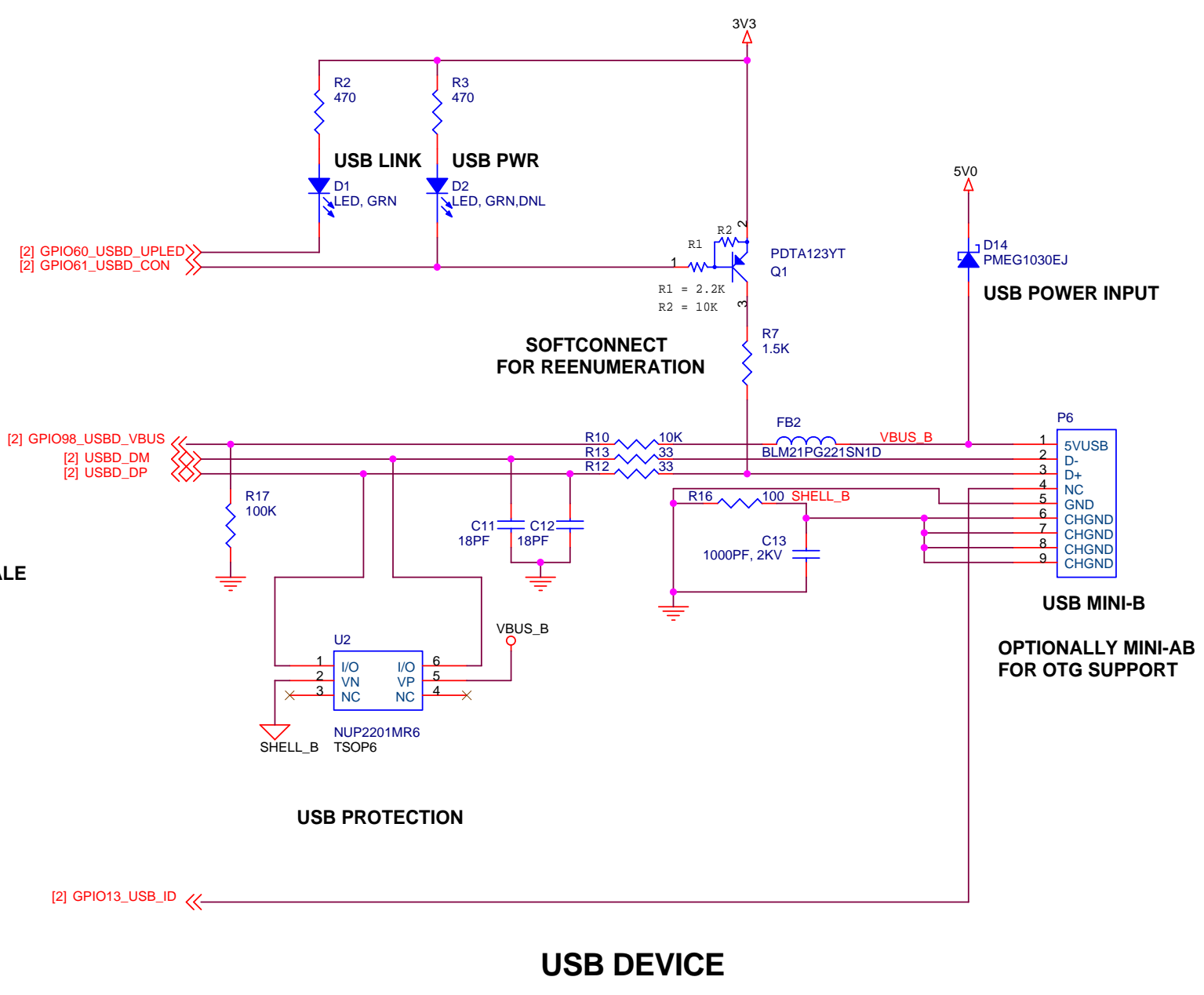
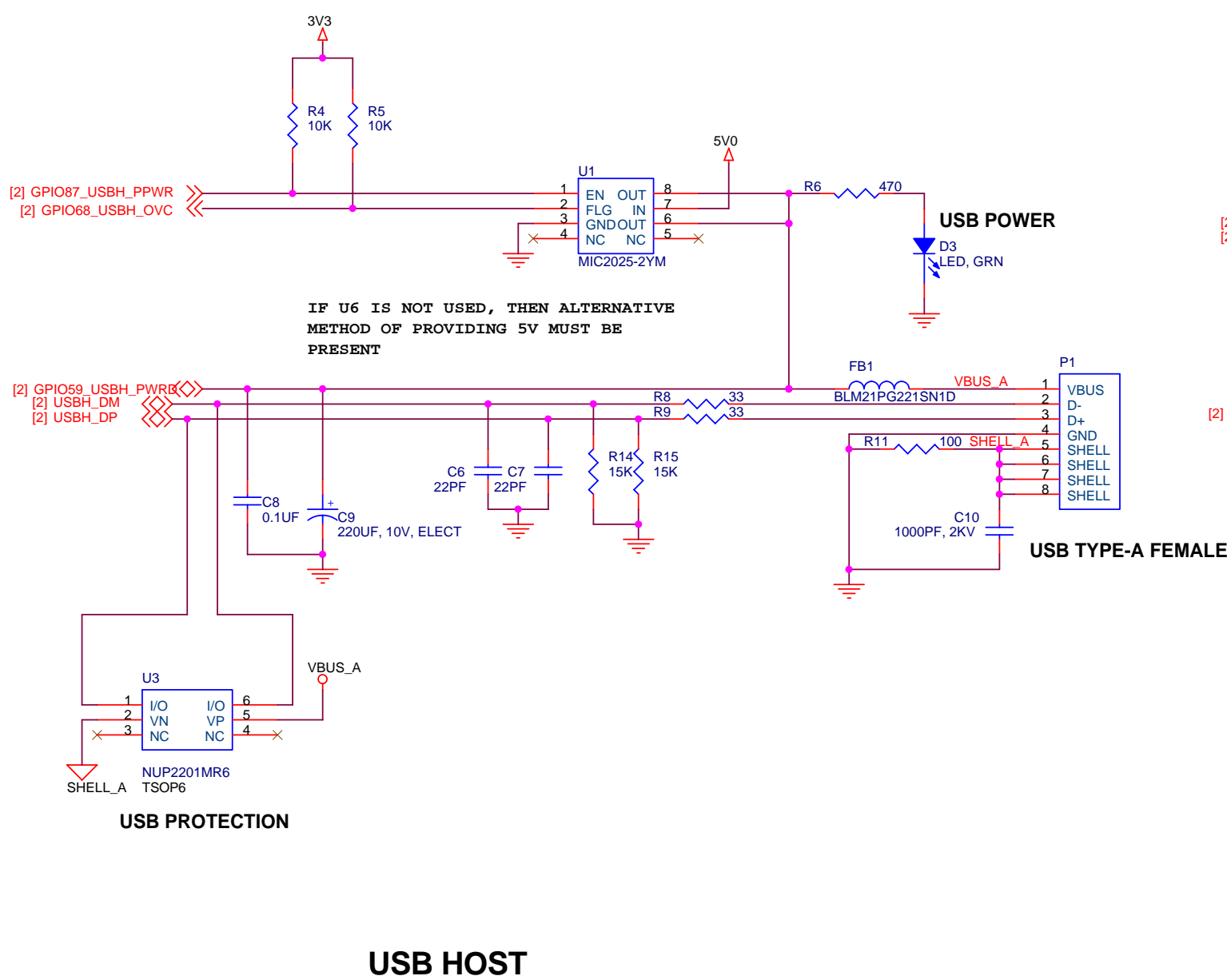


<b>Future Designs, Inc.</b> Huntsville, AL		
Title: DIMM MODULE SOCKET		
Size:	Document Number: CARRIER BOARD	Rev: 4
Date: Monday, November 22, 2010	Sheet: 2 of 9	



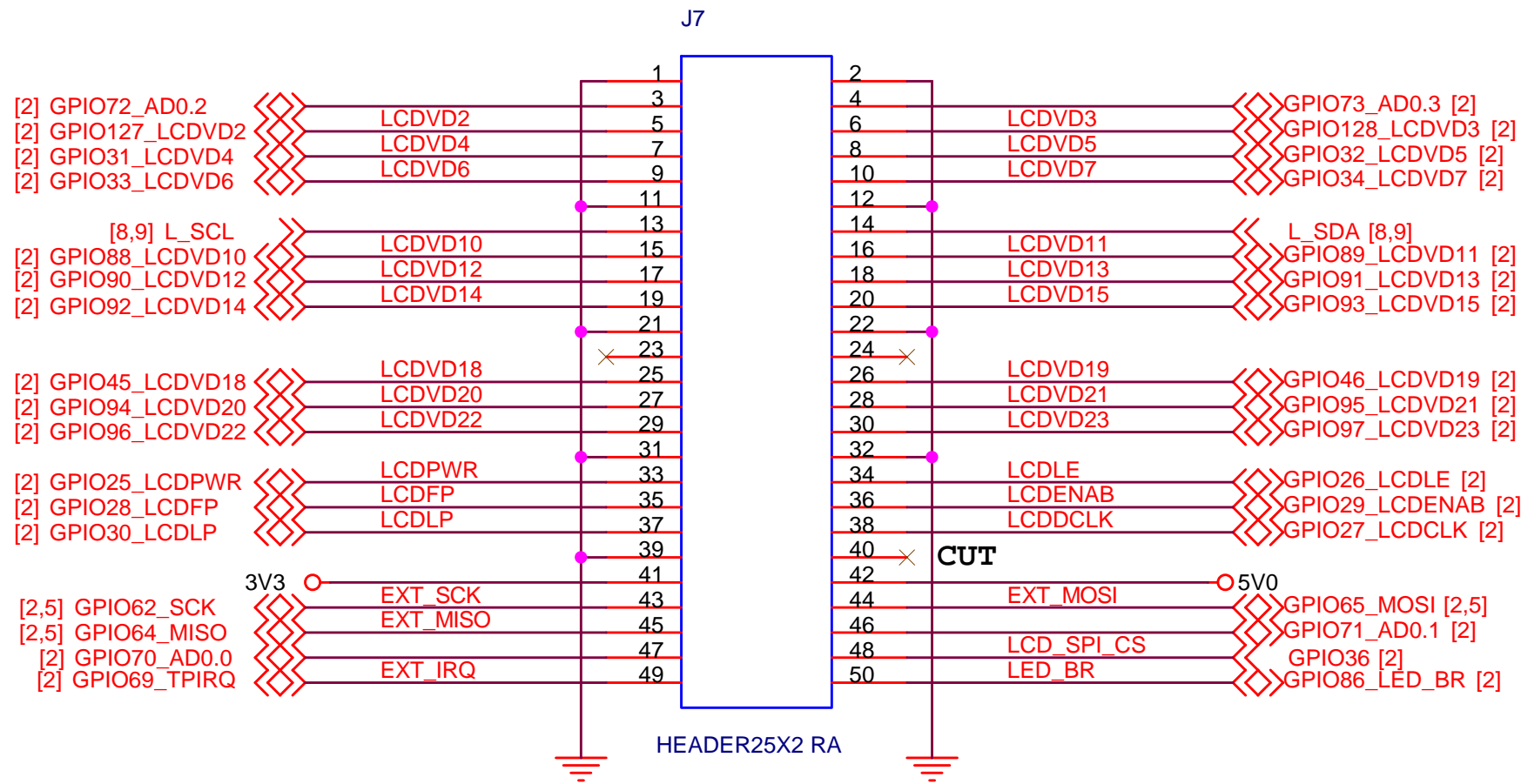
# ETHERNET

<b>Future Designs, Inc.</b> Huntsville, AL		<b>FDI</b>
Title ETHERNET		
Size B	Document Number CARRIER BOARD	Rev 4
Date:	Monday, November 22, 2010	Sheet 3 of 9



<b>Future Designs, Inc.</b> Huntsville, AL		<b>FDI</b>
Title: USB HOST/DEVICE		
Size: Custom	Document Number: CARRIER BOARD	Rev: 4
Date: Monday, November 22, 2010	Sheet: 4	of 9





## TO LCD INTERFACE BOARD

**NOTE: CUT PIN 40 FOR KEYING**

WHEN USING TI TOUCH IC:

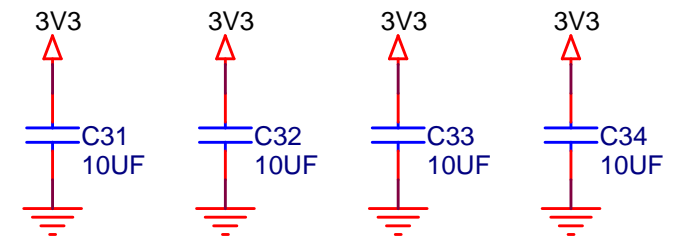
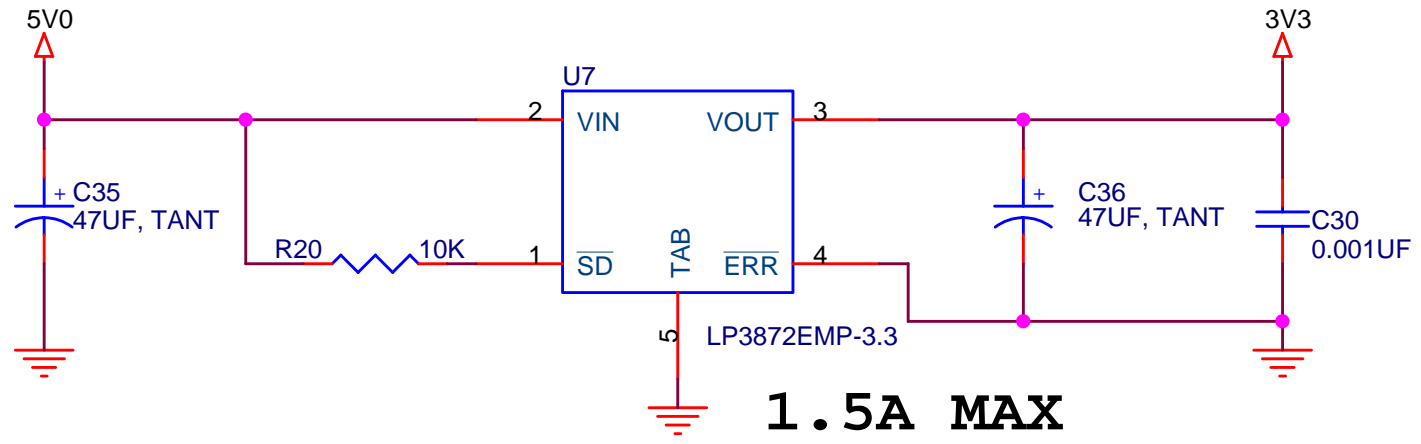
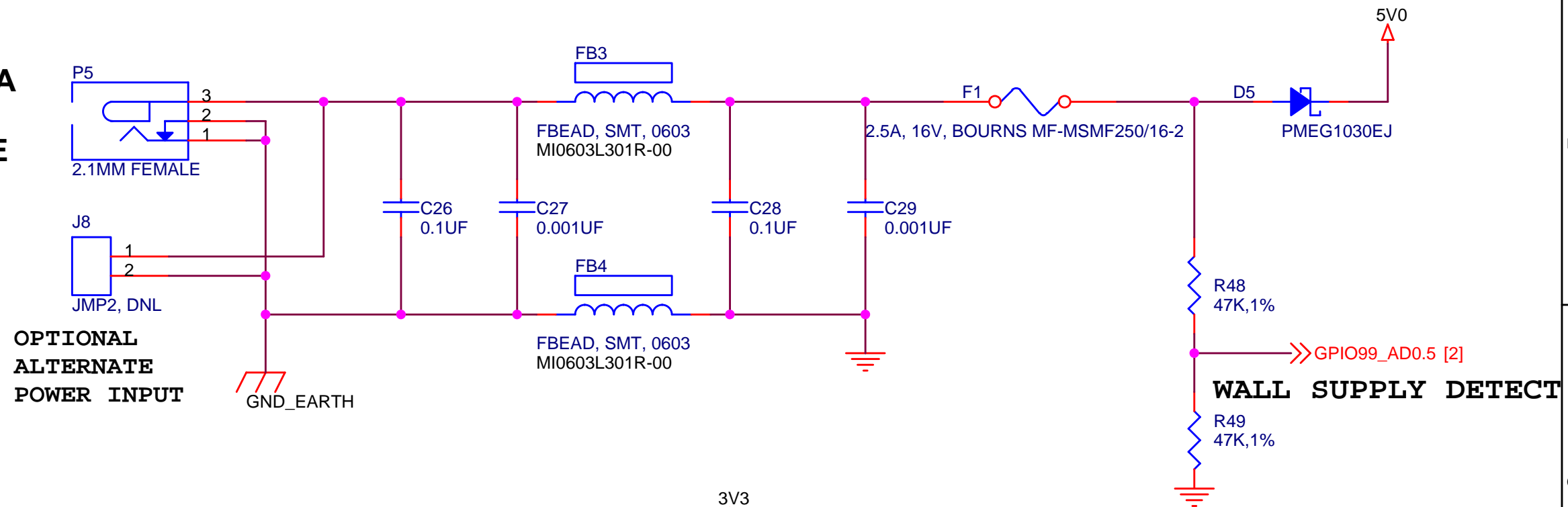
- P0.15 = SCK0
- P0.16 = CS TO TI IC
- P0.17 = MISO0
- P0.18 = MOSI0
- P0.22 = TP IRQ
- P0.23 = UNUSED
- P0.24 = UNUSED
- P0.25 = UNUSED
- P0.26 = UNUSED

WHEN USING DISCRETE TOUCH INTERFACE:

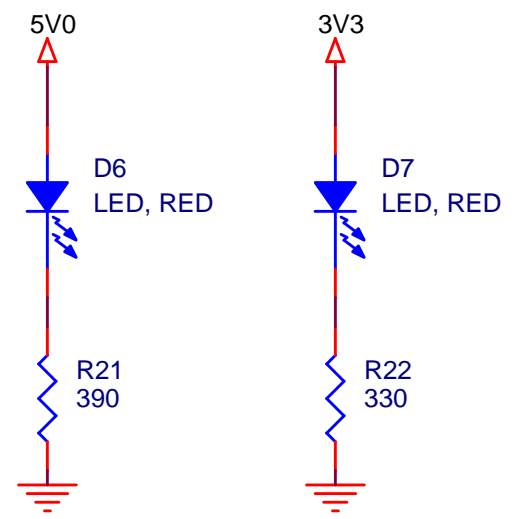
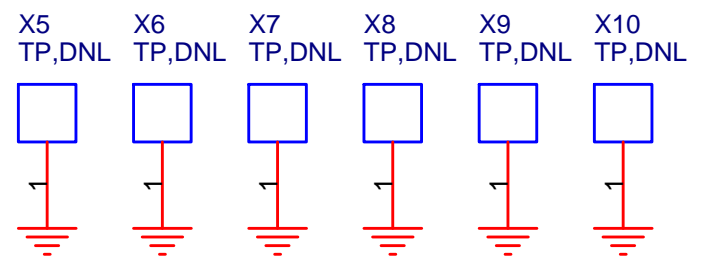
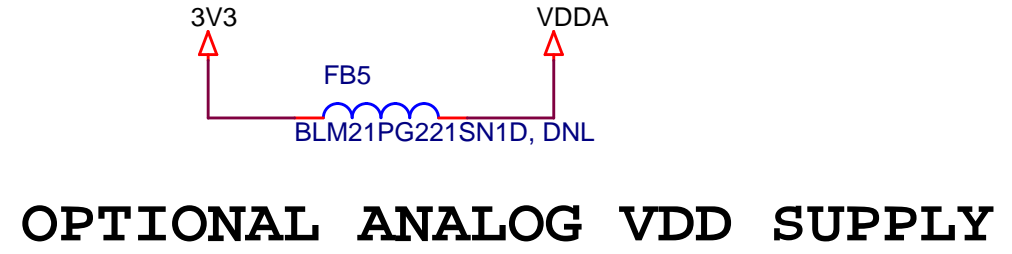
- P0.15 = UNUSED
- P0.16 = UNUSED
- P0.17 = TP GPIO OUTPUT
- P0.18 = TP GPIO OUTPUT
- P0.22 = UNUSED
- P0.23 = TP AD0.0 INPUT/GPO (X-RIGHT)
- P0.24 = TP AD0.1 INPUT/GPO (Y-UP)
- P0.25 = TP GPIO (X-LEFT)
- P0.26 = TP GPIO (Y-DOWN)

<b>Future Designs, Inc.</b> Huntsville, AL		
Title LCD INTERFACE		
Size A	Document Number CARRIER BOARD	Rev 4
Date: Monday, November 22, 2010	Sheet 6 of 9	

**5V @ 2.6A  
CENTER  
POSITIVE**

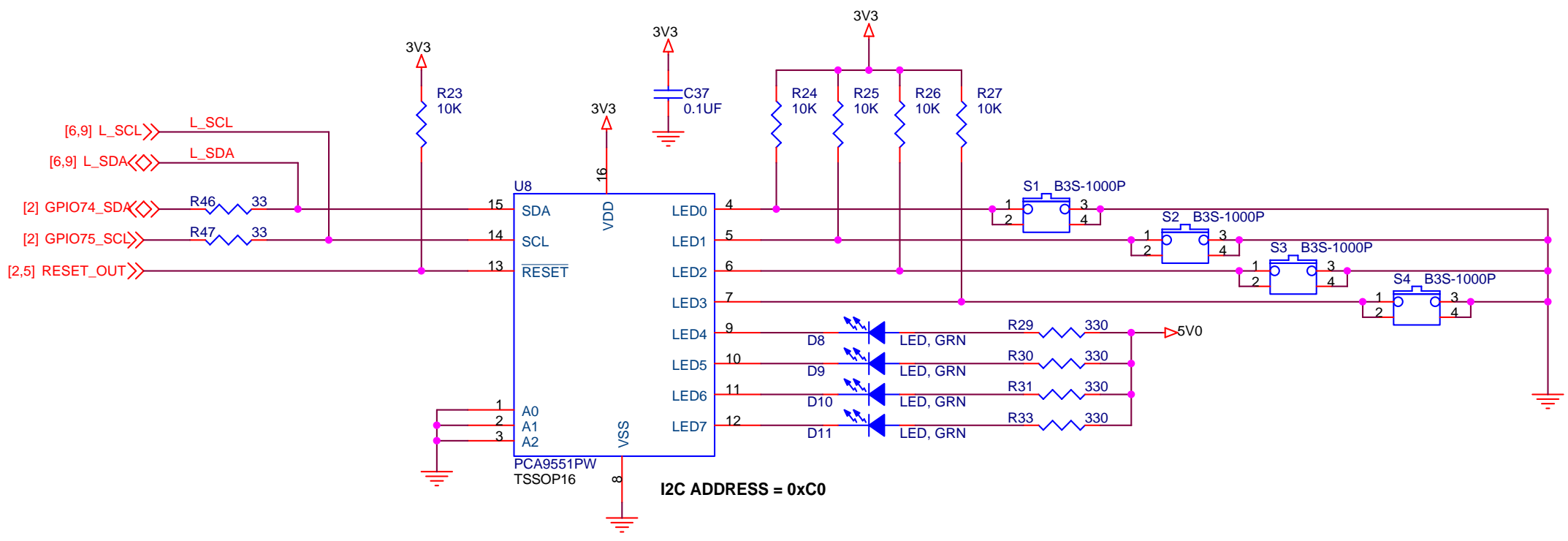


M1  
AC Adapter, 5V DC REG, 2.6A, International

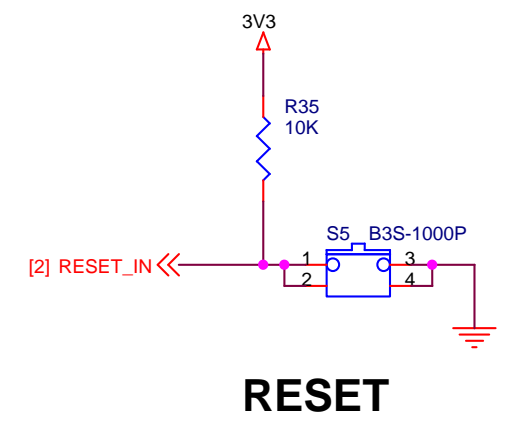


**GROUND POINTS**

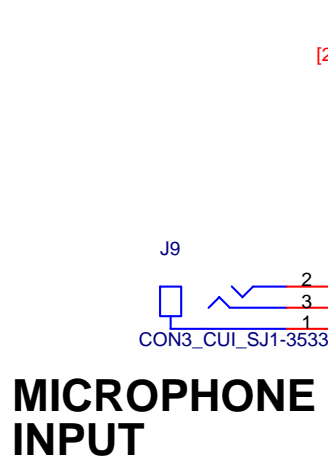
<b>Future Designs, Inc.</b> Huntsville, AL		<b>FDI</b>
Title POWER INPUT / SUPPLY		
Size A	Document Number CARRIER BOARD	Rev 4
Date: Monday, November 22, 2010	Sheet 7	of 9



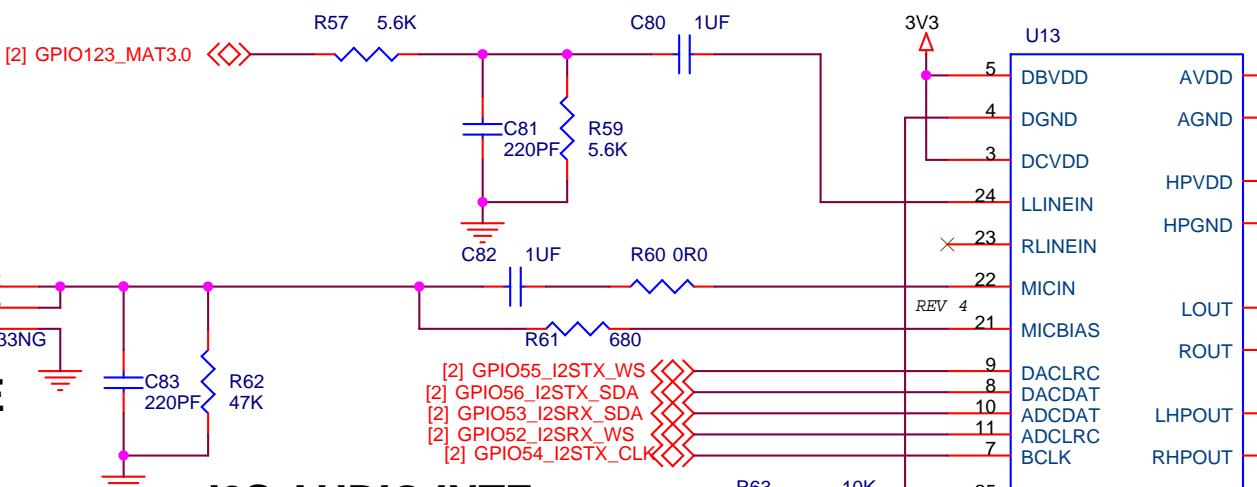
**I2C GPIO - LEDs AND SWITCHES**



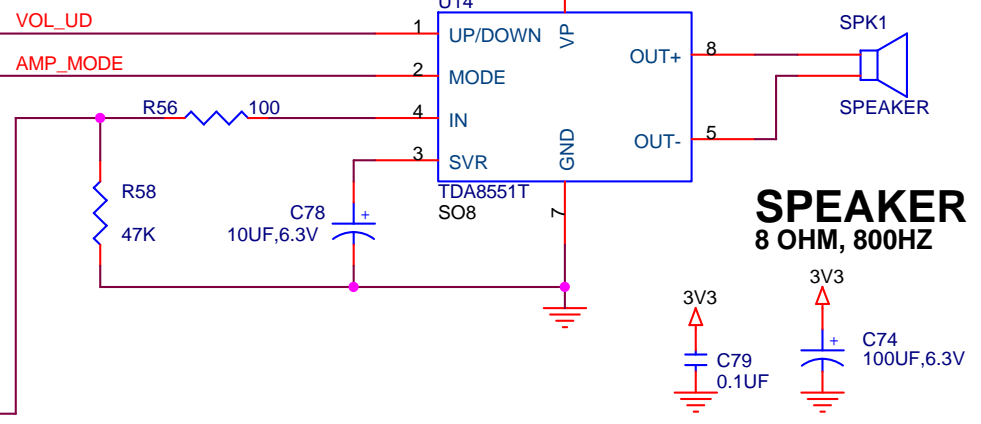
**RESET**



**MICROPHONE INPUT**



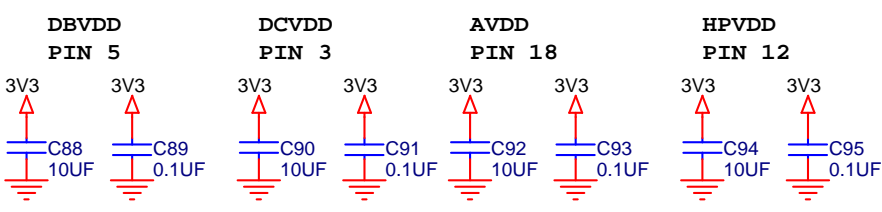
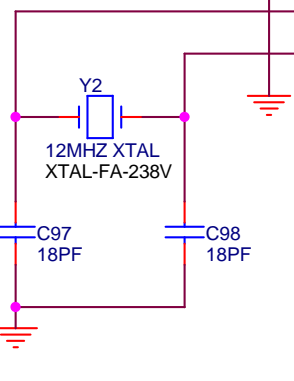
**I2S AUDIO INTF**



**SPEAKER  
8 OHM, 800HZ**

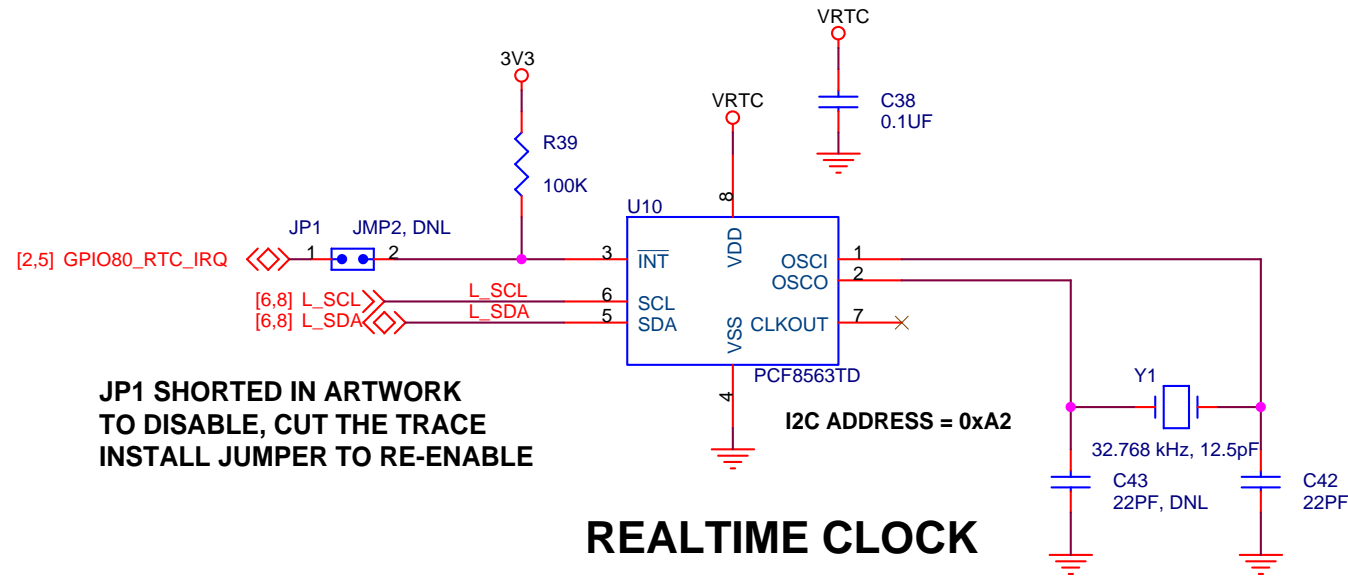
**HEADPHONE OUTPUT**

**I2C CONTROL INPUT  
I2C ADDRESS = 0x34**



<b>Future Designs, Inc.</b> Huntsville, AL		<b>FDI</b>
Title: USER IO, AUDIO, RESET SW		
Size: B	Document Number: CARRIER BOARD	Rev: 4
Date: Monday, November 22, 2010	Sheet: 8	of 9

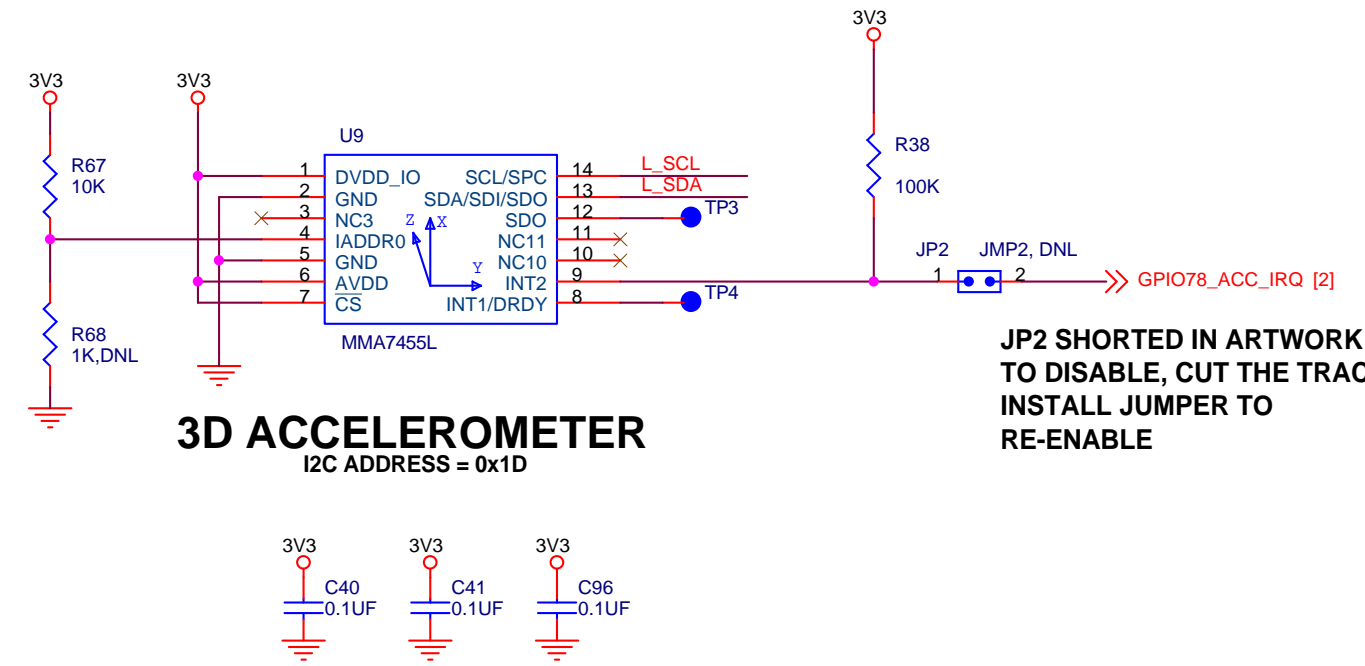




JP1 SHORTED IN ARTWORK  
TO DISABLE, CUT THE TRACE  
INSTALL JUMPER TO RE-ENABLE

### REALTIME CLOCK

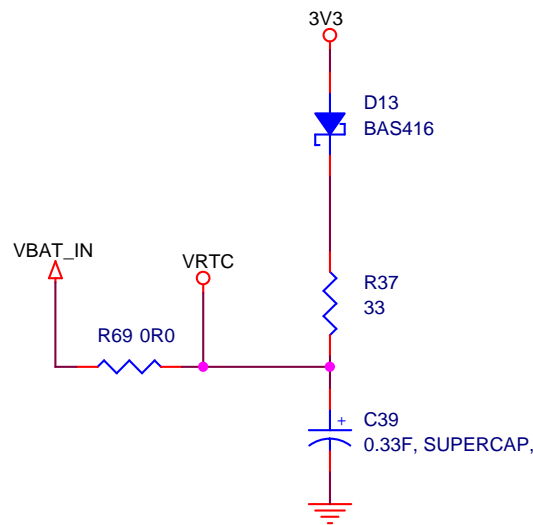
I2C ADDRESS = 0xA2



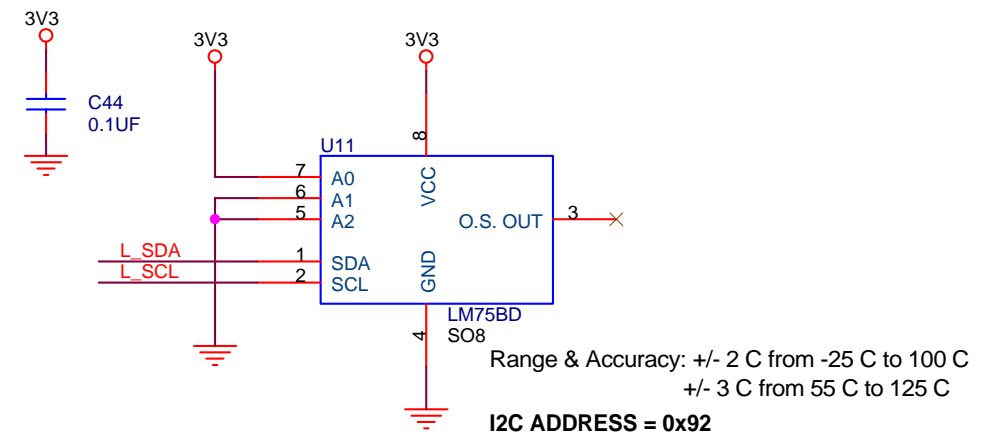
### 3D ACCELEROMETER

I2C ADDRESS = 0x1D

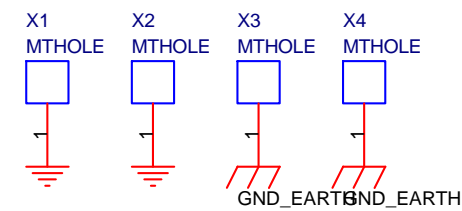
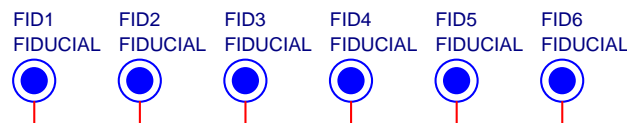
JP2 SHORTED IN ARTWORK  
TO DISABLE, CUT THE TRACE  
INSTALL JUMPER TO  
RE-ENABLE



### SUPERCAP BACKUP FOR RTC



### TEMP SENSOR



<b>Future Designs, Inc.</b> Huntsville, AL		<b>FDI</b>
Title: ACCELEROMETER, RTC, TEMP		
Size: B	Document Number: CARRIER BOARD	Rev: 4
Date: Monday, November 22, 2010	Sheet: 9	of 9