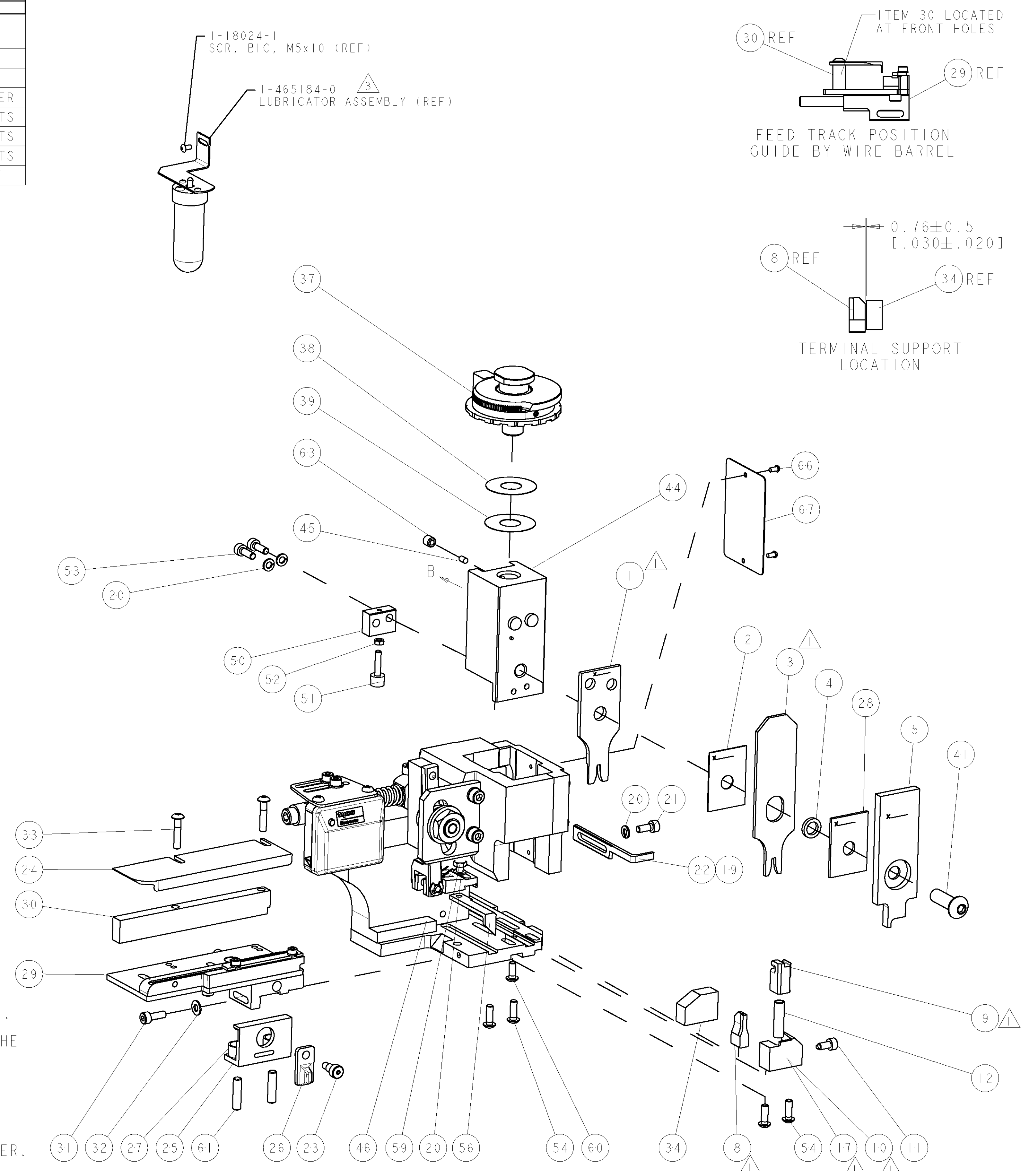
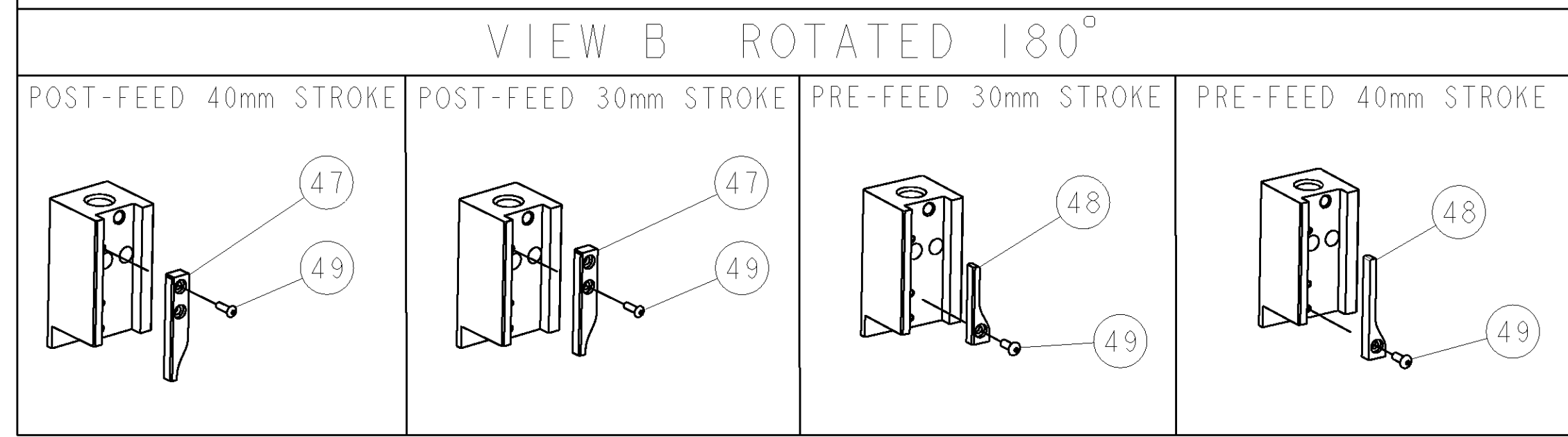


PART NUMBER	REV	TERMINATOR	FEED TYPE	DESCRIPTION
1528690-1	A	LEADMAKER	MECH POST FEED	CUTS CARRIER
1528690-2	A	BENCH	MECH PRE FEED	CUTS CARRIER
1528690-6	A	LEADMAKER	MECH POST FEED	CONTINUOUS CARRIER
7-1528690-1	A	LEADMAKER	MECH POST FEED	-1 AND SPARE PARTS
7-1528690-2	A	BENCH	MECH PRE FEED	-2 AND SPARE PARTS
7-1528690-6	A	LEADMAKER	MECH POST FEED	-6 AND SPARE PARTS
7-1528690-7	A	-	-	SPARE PARTS KIT

CRIMP DATA		LEAR/GHW TERMINAL	LEAR CRIMP SPECS
TERMINAL NAME: AFK RECEPTACLE 4.8 X 0.8			
CRIMP	SIZE	TYPE	RANGE
WIRE	2.03 [1.080 IN]	F	0.50-1.00mm ²
INSUL	2.79 [1.110 IN]	F	1.40-2.00 [1.055-1.079 IN]
WIRE STRIP LENGTH REFER TO LEAR DATA SHT		APPL INSTRUCTIONS 408-8322 & 408-8490	
TERMINAL LEAR DATA SHT APPL SPEC 26649		FEED 16.00 [1.630 IN]	
TERMINALS APPLIED			
TYCO TERM PN	LEAR TERM PN		
1949138-1	26649.330.186	-	-
-	-	-	-
-	-	-	-
-	-	-	-
WIRE SIZE	CRIMP HEIGHT	REF SETTING	
1.00mm ²	1.50 ± 0.05 [1.059 ± .002 IN]	B9	
0.75mm ²	1.40 ± 0.05 [1.055 ± .002 IN]	C6	
0.50mm ²	1.30 ± 0.05 [1.051 ± .002 IN]	D3	

- RECOMMENDED SPARE PARTS.
- GREASE RAM, CAM, CAM FOLLOWER AND FEED ROD LIGHTLY.
- CERTAIN TERMINALS REQUIRE LUBRICATION. REFER TO THE APPLICATOR INSTRUCTION SHEET FOR MORE INFORMATION.
- LUBRICATE DAILY PER THE APPLICATOR INSTRUCTION SHEET SUPPLIED WITH THE APPLICATOR.
- ALL CRIMP DATA SUPPLIED BY THE TERMINAL MANUFACTURER.



* WARNING
ON INSTALLATION, SET WIRE DISC TO LARGEST WIRE SIZE SETTING. USE OF SETTINGS BELOW MIN. REQUIRED CRIMP HEIGHT SETTING WILL CAUSE DAMAGE TO CRIMP TOOLING.

ITEM NO	PART NO	DESCRIPTION	ITEM NO
84			
83			
82			
81			
80			
79			
78			
77			
76			
75			
74			
73			
72			
71			
70			
69			
68			
67			
66			
65			
64			
63			
62			
61			
60			
59			
58			
57			
56			
55			
54			
53			
52			
51			
50			
49			
48			
47			
46			
45			
44			
43			
42			
41			
40			
39			
38			
37			
36			
35			
34			
33			
32			
31			
30			
29			
28			
27			
26			
25			
24			
23			
22			
21			
20			
19			
18			
17			
16			
15			
14			
13			
12			
11			
10			
9			
8			
7			
6			
5			
4			
3			
2			
1			

SET UP GAGE 458637-3

REVISONS		DATE	BY	APP'D
A	SEE ECO-06-022040	15SEP2006	DP	MC

ITEM NO	DESCRIPTION	ITEM NO
73		
72		
71	DOCUMENTATION PACKAGE	
70		
69		
68		
67	PLATE, IDENTIFICATION	
66	SCREW, DRIVE	
65		
64		
63	SCR, SET, CUP POINT M6 X 6.0	
62		
61	SCR, SET, FLT POINT M5 X 20.0	
60	SCR, BTN SKT HD CAP (M4 X 10.0)	
59	SCR, HEX HD CAP M4 X 8.0	
58		
57		
56	PAWL, FEED	
55		
54	SCR, BTN SKT HD CAP (M4 X 12.0)	
53	SCR, SKT HD CAP M4 X 12.0	
52	NUT, HEX, REG M3	
51	BUMPER, HOLD DOWN	
50	SPACER, TONKER	
49	SCR, BTN SKT HD CAP (M3 X 10.0)	
48	CAM, UNIVERSAL PRE FEED	
47	CAM, UNIVERSAL POST-FEED	
46	APPLICATOR SUBASSEMBLY, HDI	
45	PLUG, NYLON	
44	RAM	
43		
42		
41	SCR, BTN SKT HD CAP (M8 X 25.0)	
40		
39	SHIM SUB-ASSY	
38	SHIM	
37	FINE ADJUST HEAD ASSEMBLY	
36		
35		
34	SUPPORT, TERMINAL	
33	SCR, BTN SKT HD CAP (M4 X 20.0)	
32	WASHER, FLAT, REG M4	
31	SCR, SKT HD CAP M4 X 12.0	
30	SPACER, STRIP GUIDE	
29	STRIP GUIDE ASSEMBLY	
28	SPACER, CRIMPER	
27	SPRING, COMPRESSION	
26	LEVER, DRAG RELEASE	
25	DRAG, TERMINAL	
24	PLATE, STRIP GUIDE	
23	SCR, SKT HD SHLDR 5.0 DIA X 6.0	
22	STRIPPER	
21	SCR, SKT HD CAP M4 X 10.0	
20	WASHER, SPRG LOCK, REG M4	
19	STRIPPER	
18		
17	SHEAR HOLDER, FRONT	
16		
15		
14		
13		
12	SPRING, COMPRESSION	
11	STOP, SHEAR	
10	SHEAR HOLDER, FRONT, CUT	
9	FLOATING SHEAR, FRONT	
8	ANVIL, COMBINATION .080	
7		
6		
5	DEPRESSOR, SHEAR	
4	BLOCK, CRIMPER SPACER	
3	CRIMPER, INSULATION F PREMIUM	
2	SPACER, CRIMPER	
1	CRIMPER, WIRE PREMIUM	

LOC	DIST	P	LTR	DESCRIPTION	DATE	BY	APP'D
A	66			SEE ECO-06-022040	15SEP2006	DP	MC

ITEM NO	PART NO	DESCRIPTION	ITEM NO
84			
83			
82			
81			
80			
79			
78			
77			
76			
75			
74			
73			
72			
71			
70			
69			
68			
67			
66			
65			
64			
63			
62			
61			
60			
59			
58			
57			
56			
55			
54			
53			
52			
51			
50			
49			
48			
47			
46			
45			
44			
43			
42			
41			
40			
39			
38			
37			
36			
35			
34			
33			
32			
31			
30			
29			
28			
27			
26			
25			
24			
23			
22			
21			
20			
19			
18			
17			
16			
15			
14			
13			
12			
11			
10			
9			
8			
7			
6			
5			
4			
3			
2			
1			

DIMENSIONS:	TOLERANCES UNLESS OTHERWISE SPECIFIED:	APPROVED:	NAME:
mm [IN]	0 PLC ±	M. CLIFFORD	
	1 PLC ±		
	2 PLC ±		
	3 PLC ±		
	4 PLC ±		
	ANGLES ±		

MATERIAL:	FINISH:	WEIGHT:	SCALE:	SHEET:	OF:	REV:
			3:5	1	1	A

AMP 4895 REV 31MAR2006
Pro/ENGINEER DRAWING