

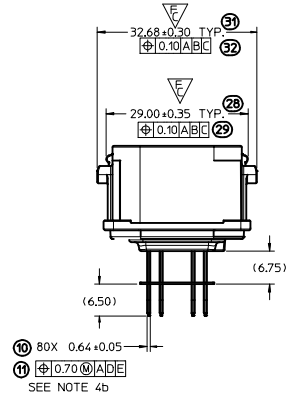
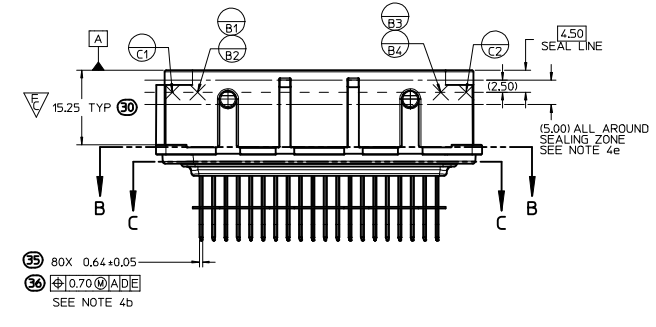
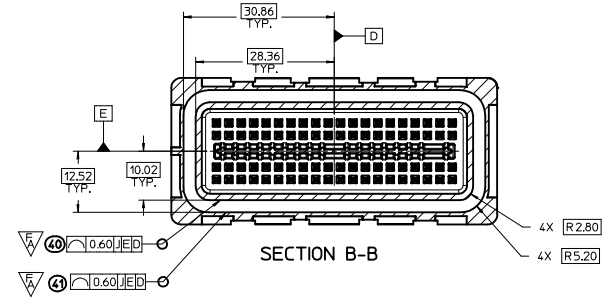
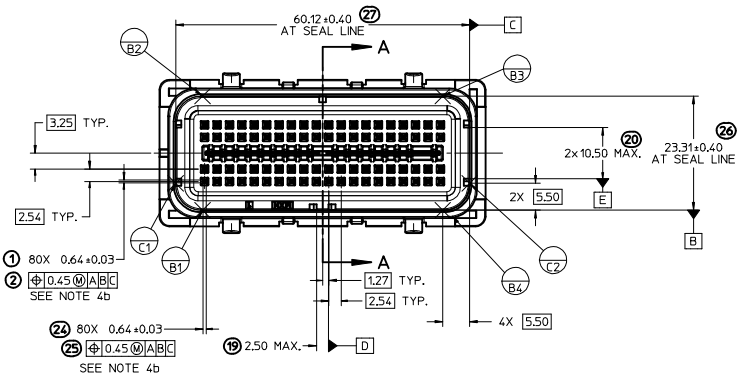
NOTES: VALID UNLESS OTHERWISE SPECIFIED

1. GENERAL:
 - a. APPLICATION SPECIFICATION: AS-31386-200
 - b. PRODUCT SPECIFICATION: PS-31387-200
 - c. PACKAGING SPECIFICATION: PK-31301-916
 - d. PARTS MUST BE IN COMPLIANCE TO MOLEX CHEMICAL SUBSTANCES FOR PRODUCTS AND PACKAGING SPECIFICATION: ES-40000-5016
 - e. DATA MUST BE SUBMITTED UNDER THE MOLEX PART NUMBER TO IMDS (COMPANY ID#13255)
 - f. DIMENSIONS AND TOLERANCES ARE VALID FOR AS SHIPPED SHROUD ASSEMBLY
 - g. REFERENCE GM INTERFACE CONTROL DRAWINGS (ICD)
 1. 12582682 (Au)
 2. 12642695 (Ag)
2. DESIGN - MATERIALS:
 - a. PLASTIC: PBT 30% GF - SEE CHART FOR COLOR
 - b. SIGNAL PIN PLATING:
 - UNDERPLATE: NICKEL 1.27-2.54 μ m
 - SELECT GOLD OPTION: 0.76 μ m MIN.
 - SELECT SILVER OPTION: 1.90-3.30 μ m MIN
 - SOLDER TAIL SELECT TIN: 5.08-10.16 μ m BRIGHT FINISH
3. DESIGN - GEOMETRY:
 - a. THIS IS A 100% CAD GENERATED PART. THE CAD MATHEMATICAL DATA IS THE MASTER FOR ALL NON-DIMENSIONAL FEATURES. DRAWING DIMENSIONS SHALL BE MET WHEN DIFFERENCES EXIST BETWEEN THE DRAWING AND THE CAD MODEL. UNDERLINED DIMENSIONS OR DIMENSIONS INDICATED AS 'EDITED' MAY BE DIFFERENT FROM THE 3D MODEL GEOMETRY. FOR DIMENSIONAL OR ANY INFORMATION NOT SHOWN ON THIS DRAWING, ANALYZE THE CAD MODEL.
 - b. PRODUCT DESIGN MODEL NUMBER(S): SEE BOM TABLE
 - c. GEOMETRIC DIMENSIONS AND TOLERANCES PER ASME Y14.5M-1994
 - d. GENERAL TOLERANCES - SEE TABLE
4. DESIGN - MANUFACTURING:
 - a. HUMAN READABLE LASER MARKING
 1. INFORMATION TO BE PRINTED:
 - DDD - 4 DIGIT JULIAN DATE CODE
 - S_HH - SIXTHCER NUMBER_HOUR NUMBER (24 HOUR CLOCK)
 - MMMM - LAST FOUR DIGITS OF MOLEX MATERIAL NUMBER
 2. SIZE: HUMAN LEGIBLE
 - b. PIN MATE SIDE AND PCB SIDE TRUE POSITION TO BE VERIFIED ONLINE WITH A GO/NO-GO FUNCTIONAL GAGE.
 - c. ANTI-TARNISH FOR Ag PLATING ONLY: SYNTHETIC HYDROCARBON CONTACT SURFACE FINISH OR EQUIVALENT APPLIED WITHOUT VOID TO CONTACT AREA (MIN. 3.7mm FROM PIN TIP).
 - d. VISUAL DEFECTS SHALL MEET COSMETIC STANDARD PS-45499-002 (CLASS B)
 - e. THERE SHALL BE NO PERMISSIBLE DEFECTS THAT COULD POTENTIALLY PROHIBIT THE FUNCTIONALITY WITHIN THE SEALING SURFACE/ZONE SUCH AS PARTING LINES, MISMATCHES, SINK, TEXTURE VARIATIONS, SCRATCHES/GOUGES, SHORT FILL, PROTRUSIONS, PITS, DENTS/NICKS, BLISTERS OR EJECTOR MARKS.

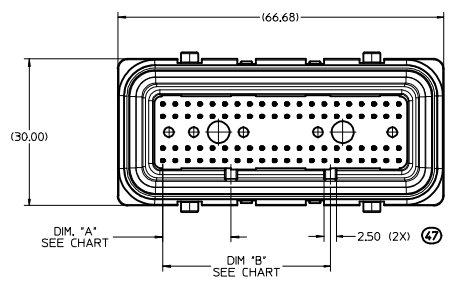
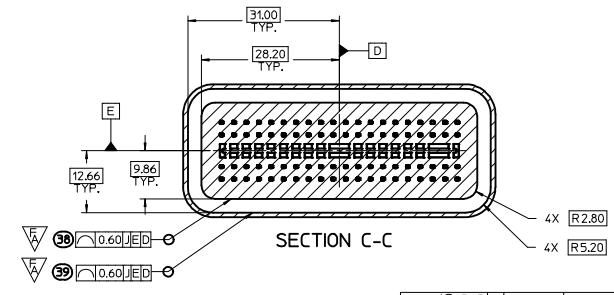
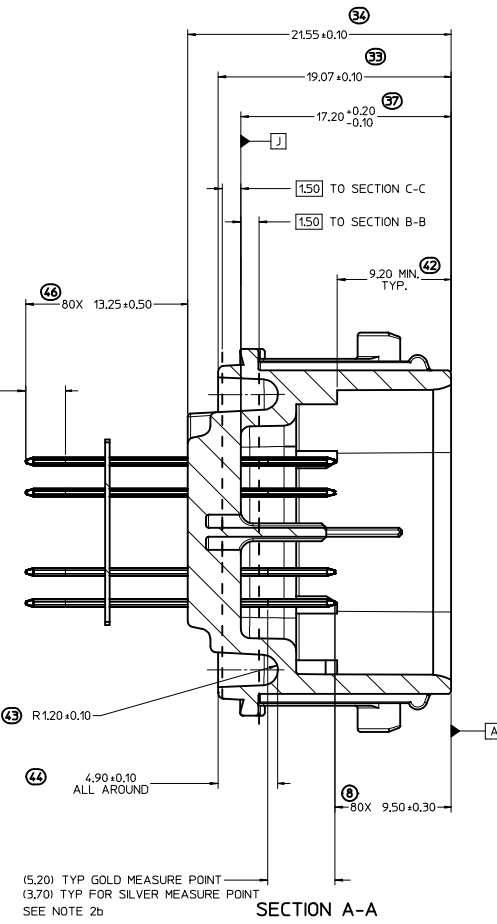
B9	CORRECTED KEY H 'DIM B' VALUE
B8	CORRECTED KEY H 'DIM A' VALUE; CHANGE STATUS TO SALEABLE
B7	UPDATED NOTE 1c SAP# 10595870
B6	ADDED NOTE 4d, e & SEALING ZONE ON PG 2 SAP# 10586362
B5	ADDED BALLOON NUMBERS 1.2,10,11,19,20, 24-44,46,47, DELETED BALLOON NUMBERS 3-7,9,12-15,17, 18, 21-23, 45 EDITED ALL NOTES, STATUS & MATING HARNESS PART NUMBER SAP# 10580347

INSPECTION BALLOON NUMBER LOG	
PER DRAWING REVISION:	B6
LAST BALLOON NUMBER:	47
ADDED BALLOON NUMBER:	1 2 8 10 11 19 20 24 25 26 27 28 29 30 31 32 33 34 35 36 37 38 39 40 41 42 43 44 46 47
DELETED INSPECTION BALLOON NUMBER:	3 4 5 6 7 9 12 13 14 15 16 17 18 21 22 23 45

REV	DESCRIPTION	SCALE	DESIGN UNITS	THIRD ANGLE PROJECTION	
B9	SEE REV COLUMN	2:1	METRIC		
QUALITY SYMBOLS ▽=0 ▽=0 ▽=0		GENERAL TOLERANCES (UNLESS SPECIFIED) mm INCH 4 PLACES ± --- ± --- 3 PLACES ± --- ± --- 2 PLACES ± 0.13 ± --- 1 PLACE ± 0.25 ± --- 0 PLACE ± --- ± ---		DIMENSION STYLE MM ONLY DRAWN BY DATE FJAKLIC 04/30/08 CHECKED BY DATE FJAKLIC 04/30/08 APPROVED BY DATE GPRATT 05/05/08	
MATERIAL NO. SEE CHART		DOCUMENT NO. SD-31387-080		SHEET NO. 1 OF 3	
TITLE 80 CKT SHROUD ASSEMBLY 0.64 SQ. PINS MX123 					
DRAFT WHERE APPLICABLE MUST REMAIN WITHIN DIMENSIONS SIZE D THIS DRAWING CONTAINS INFORMATION THAT IS PROPRIETARY TO MOLEX INCORPORATED AND SHOULD NOT BE USED WITHOUT WRITTEN PERMISSION					



SIGNAL PIN (3.25) TYP.
TIN MEASURE POINT
SEE NOTE 2b

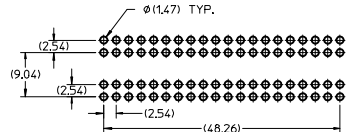
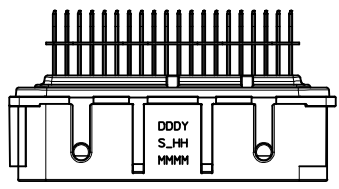
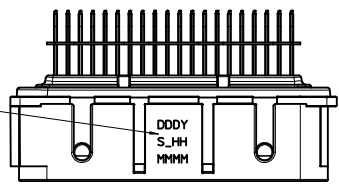


SECTION A-A
SCALE 5:1

SEE SHEET 1 EC NO: UAU2014-0977 DRAWING NO: 2014/01/15 CHK: OKRAMZYK 2014/01/15 APPR: OKRAMZYK 2014/01/15 REV: B9	QUALITY SYMBOLS ∇=4 ∇=3 ∇=0	GENERAL TOLERANCES (UNLESS SPECIFIED) <table border="1"> <tr> <th></th> <th>mm</th> <th>INCH</th> </tr> <tr> <td>4 PLACES +</td> <td>---</td> <td>---</td> </tr> <tr> <td>3 PLACES +</td> <td>---</td> <td>---</td> </tr> <tr> <td>2 PLACES +</td> <td>±0.13</td> <td>---</td> </tr> <tr> <td>1 PLACE +</td> <td>±0.25</td> <td>---</td> </tr> <tr> <td>0 PLACE +</td> <td>---</td> <td>---</td> </tr> </table> ANGULAR ± 3 ° DRAFT WHERE APPLICABLE MUST REMAIN WITHIN DIMENSIONS		mm	INCH	4 PLACES +	---	---	3 PLACES +	---	---	2 PLACES +	±0.13	---	1 PLACE +	±0.25	---	0 PLACE +	---	---	DIMENSION STYLE MM ONLY SCALE 2:1 DESIGN UNITS METRIC THIRD ANGLE PROJECTION	DRAWN BY: FJAKLIC CHECKED BY: FJAKLIC APPROVED BY: GPRATT DATE: 04/30/08 DATE: 04/30/08 DATE: 05/05/08	TITLE 80 CKT SHROUD ASSEMBLY 0.64 SQ. PINS MX123 molex DOCUMENT NO. SD-31387-080 SHEET NO. 2 OF 3
		mm	INCH																				
4 PLACES +	---	---																					
3 PLACES +	---	---																					
2 PLACES +	±0.13	---																					
1 PLACE +	±0.25	---																					
0 PLACE +	---	---																					
MATERIAL NO. SEE CHART SIZE D THIS DRAWING CONTAINS INFORMATION THAT IS PROPRIETARY TO MOLEX INCORPORATED AND SHOULD NOT BE USED WITHOUT WRITTEN PERMISSION																							

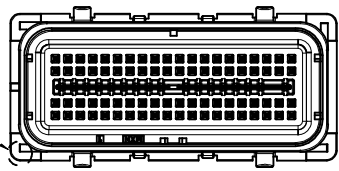
SHROUD ASSEMBLY NUMBER	MATE SIDE PIN FINISH	COLOR	HARNESS SIDE KEY CODE	PCB SIDE KEY LOCATION		MATING HARNESS PART NUMBER	STATUS
				DIM. "A" +0.30	DIM. "B" +0.30		
31387-4001	GOLD	BLUE	G	13.97	34.29	345660703 345661903	SALEABLE
31387-4009	GOLD	GRAY	H	19.05	34.29	345660803 345662003	SALEABLE
31387-4017	SILVER	BLUE	G	13.97	34.29	345660703 345661903	SALEABLE
31387-4018	SILVER	GRAY	H	19.05	34.29	345660803 345662003	SALEABLE

SHROUD ASSEMBLY TRACEABILITY INFORMATION FOR MOLEX INTERNAL USE ONLY (SEE NOTE 4a)

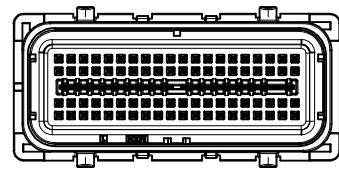


PCB LAYOUT FOR REFERENCE ONLY

MATE SIDE POLARIZATION KEY AT CORNERS

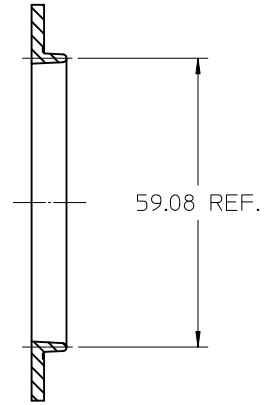
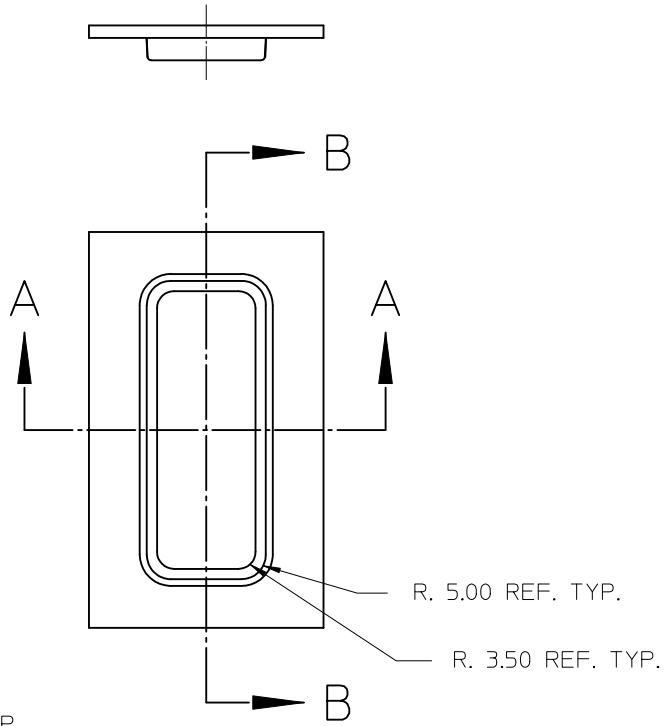
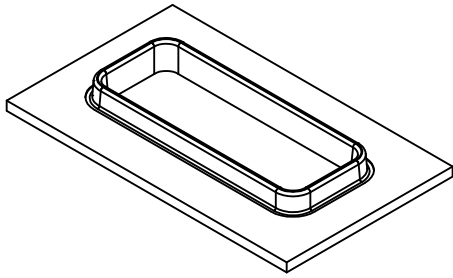


KEY OPTION "G"

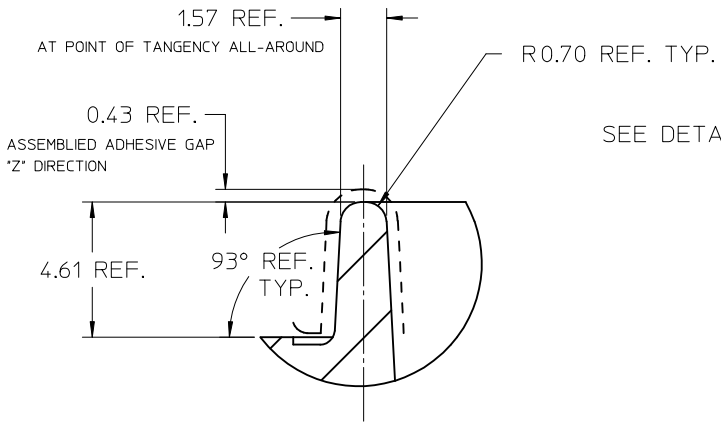


KEY OPTION "H"

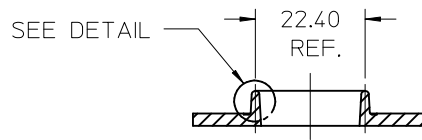
SEE SHEET 1 ELEC NO: UAU2014-0977 DRAWN BY: DRYNADUNN 2014/01/15 CHECKED BY: CHYKOBKRAMCZYK 2014/01/15 APPR: DKBKRAMCZYK 2014/01/15 B9	QUALITY SYMBOLS	GENERAL TOLERANCES (UNLESS SPECIFIED)	DIMENSION STYLE	SCALE	DESIGN UNITS	THIRD ANGLE PROJECTION																																
	$\nabla=0$ $\nabla=0$ $\nabla=0$	<table border="1"> <thead> <tr> <th></th> <th>mm</th> <th>INCH</th> </tr> </thead> <tbody> <tr> <td>4 PLACES</td> <td>±---</td> <td>±---</td> </tr> <tr> <td>3 PLACES</td> <td>±---</td> <td>±---</td> </tr> <tr> <td>2 PLACES</td> <td>±0.13</td> <td>±---</td> </tr> <tr> <td>1 PLACE</td> <td>±0.25</td> <td>±---</td> </tr> <tr> <td>0 PLACE</td> <td>±---</td> <td>±---</td> </tr> </tbody> </table>		mm	INCH	4 PLACES	±---	±---	3 PLACES	±---	±---	2 PLACES	±0.13	±---	1 PLACE	±0.25	±---	0 PLACE	±---	±---	<table border="1"> <thead> <tr> <th colspan="2">MM ONLY</th> </tr> </thead> <tbody> <tr> <td>DRAWN BY</td> <td>DATE</td> </tr> <tr> <td>FJAKLIC</td> <td>04/30/08</td> </tr> <tr> <td>CHECKED BY</td> <td>DATE</td> </tr> <tr> <td>FJAKLIC</td> <td>04/30/08</td> </tr> <tr> <td>APPROVED BY</td> <td>DATE</td> </tr> <tr> <td>GPRATT</td> <td>05/05/08</td> </tr> </tbody> </table>	MM ONLY		DRAWN BY	DATE	FJAKLIC	04/30/08	CHECKED BY	DATE	FJAKLIC	04/30/08	APPROVED BY	DATE	GPRATT	05/05/08	2:1	METRIC	
		mm	INCH																																			
	4 PLACES	±---	±---																																			
3 PLACES	±---	±---																																				
2 PLACES	±0.13	±---																																				
1 PLACE	±0.25	±---																																				
0 PLACE	±---	±---																																				
MM ONLY																																						
DRAWN BY	DATE																																					
FJAKLIC	04/30/08																																					
CHECKED BY	DATE																																					
FJAKLIC	04/30/08																																					
APPROVED BY	DATE																																					
GPRATT	05/05/08																																					
DRAFT WHERE APPLICABLE MUST REMAIN WITHIN DIMENSIONS	ANGULAR ± 3 °	MATERIAL NO. SEE CHART	TITLE 80 CKT SHROUD ASSEMBLY 0.64 SQ. PINS MX123	DOCUMENT NO. SD-31387-080	SHEET NO. 3 OF 3																																	



SECTION B-B



DETAIL 6:1



SECTION A-A

ENTER DESCRIPTION EC NO: UAU2012-1624 DRAWN BY: DRW:DDUNN 2013/01/30 CHKD: JOUNAJ 2013/02/07 APPR: DKRAWCZYK 2013/02/19 REV B	QUALITY SYMBOLS ▽=0 ▽=0	GENERAL TOLERANCES (UNLESS SPECIFIED) mm INCH 4 PLACES ±--- ±--- 3 PLACES ±--- ±--- 2 PLACES ±--- ±--- 1 PLACE ±--- ±--- ANGULAR ±---°	DIMENSION STYLE MM ONLY DRAWN BY: F JAKLIC CHECKED BY: G PRATT APPROVED BY: DKRAWCZYK MATERIAL NO.	DATE: 11/21/2008 DATE: 11/21/2008 DATE: 2013/02/19	SCALE: 1:1 DESIGN UNITS: METRIC THIRD ANGLE PROJECTION	TITLE: LARGE FOOTPRINT ADHESIVE TONGUE GEOMETRY	
	DRAFT WHERE APPLICABLE MUST REMAIN WITHIN DIMENSIONS					MOLEX INCORPORATED	SHEET NO. 1 OF 1
	THIS DRAWING CONTAINS INFORMATION THAT IS PROPRIETARY TO MOLEX INCORPORATED AND SHOULD NOT BE USED WITHOUT WRITTEN PERMISSION					DOCUMENT NO. SD-31387-173	SHEET NO. 1 OF 1
	MILEX INCORPORATED						