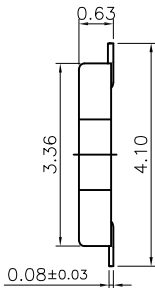
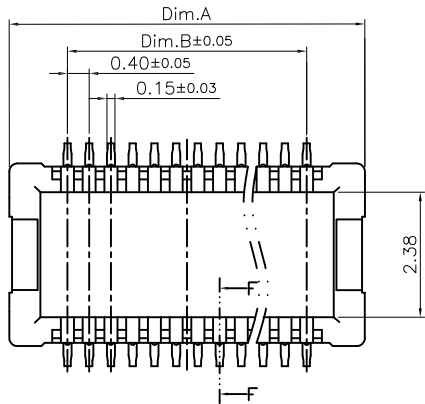
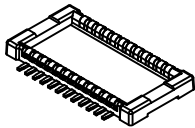


REV.	DESCRIPTION	DATE
A	New Drawing	2022/03/01

Compliance with:
 PCIe4.0(16GTS), USB4
 Gen3(40Gbps),USB3.2
 Gen2(10Gbps),
 Mating with:
 "BABD-XXXG1087BCLI-C"

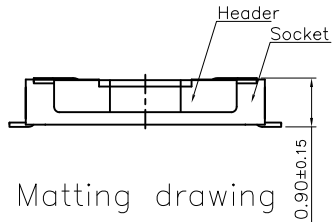


Specifications:
 Current Rating: 0.3A AC,DC
 Voltage Rating: 30V AC,DC
 Contact Resistance: 80m ohm.Max
 Insulation Resistance: 1000M ohm.Min
 Withstanding Voltage: 150V AC/Minute
 Operating Temperature Range:-55°C~+85°C

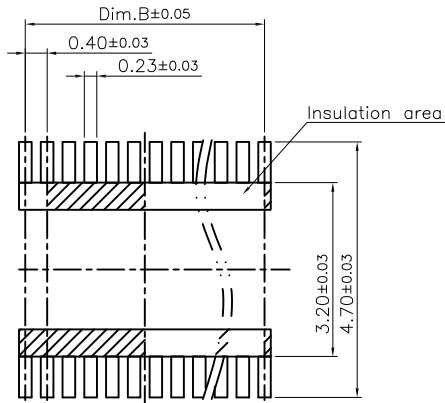


Material:
 Insulator: Temp Plastic(UL94V-0)
 Insulator Color: Black
 Contact: Copper Alloy
 Plated: Gold Plated

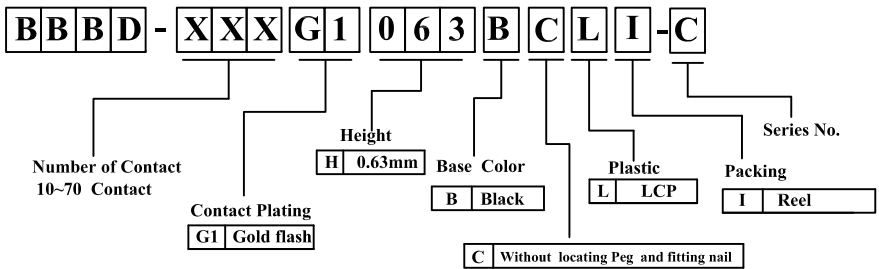
Circuits	Dim.A	Dim.B	Circuits	Dim.A	Dim.B
10	3.74	1.60	40	9.74	7.60
20	5.74	3.60	50	11.74	9.60
24	6.54	4.40	60	13.74	11.60
30	7.74	5.60	70	15.74	13.60



Matting drawing



P.C.B Layout

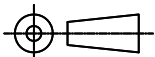


RoHS compliant

Superior Tech Co., Ltd.

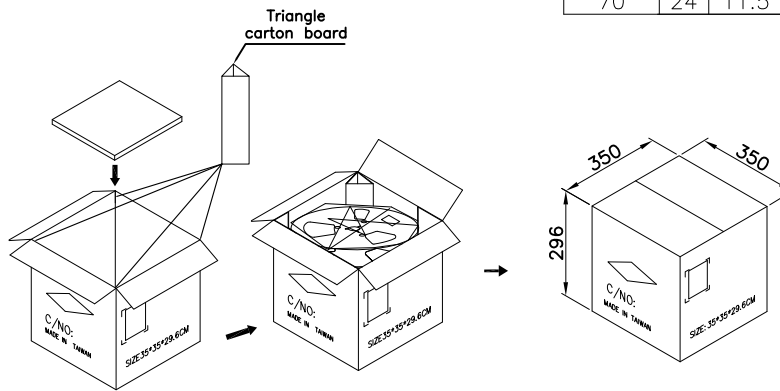
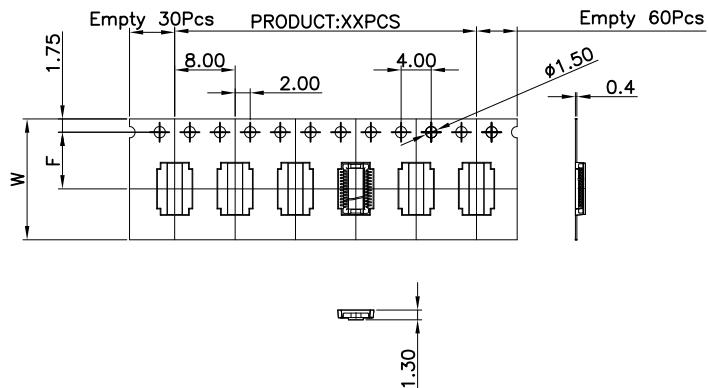
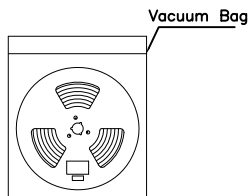
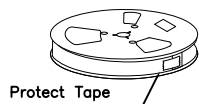
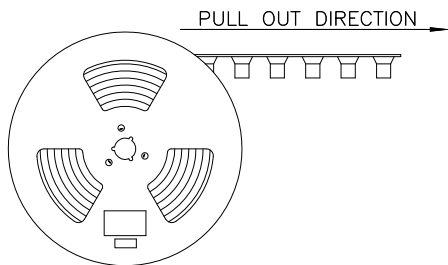
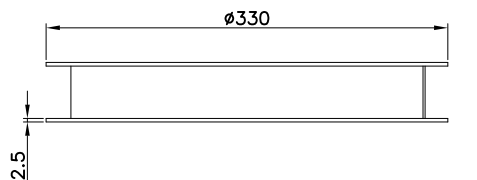
General Tolerance		TITLE	PH 0.4mm Male BTB MH0.9mm.	
X.	± 0.5	DRAWN Tom	DATE	NO.
.X	± 0.3		03-01-22'	T230
.XX	± 0.2	CHECK	DATE	PART NO.
.XXX	± 0.1			BBBD-XXXG1063BCLI-C
Angle	± 5°	APPROVED	DATE	CUSTOMER NO. DK

REV.	UNIT	SCALE
A	mm	1:1



(Q2-R03-01A) ST-R05-07

REV.	DESCRIPTION	DATE
A	New Drawing	2022/03/24



Note:

- All dimensions meet EIA-481-D requirements.
- Material: Transparent Conductive Polystyrene Alloy 100% recyclable.
- Thickness : 0.4±0.05mm
- Component load per 13" reel reel :5000 pcs.
- Carton Size:
Carton Size:350*350*296(MM)

Pin No.	W	F	PCS/R	R/CTN	Q'TY
10	16	7.5	5000	12	60,000
20	16	7.5	5000	12	60,000
24	16	7.5	5000	12	60,000
30	16	7.5	5000	12	60,000
40	24	11.5	5000	9	45,000
50	24	11.5	5000	9	45,000
60	24	11.5	5000	9	45,000
70	24	11.5	5000	9	45,000

For Reel width (dimension W)16/24mm

RoHS compliant

Superior Tech Co., Ltd.

General Tolerance		TITLE	BBBD-XXXG1063BCLI-C-Packing	
X. ± 0.5		DRAWN Jacky	DATE	NO.
.X ± 0.3			03-24-22'	T230
.XX ± 0.2		CHECK Tom	DATE	PART NO.
.XXX ± 0.1			03-24-22'	BBBD-XXXG1063BCLI-C
REV.	UNIT	SCALE	APPROVED	DATE
A	mm	1:5	Tom	03-24-22'
			CUSTOMER NO.	DK

(Q2-R03-01A) ST-R05-07