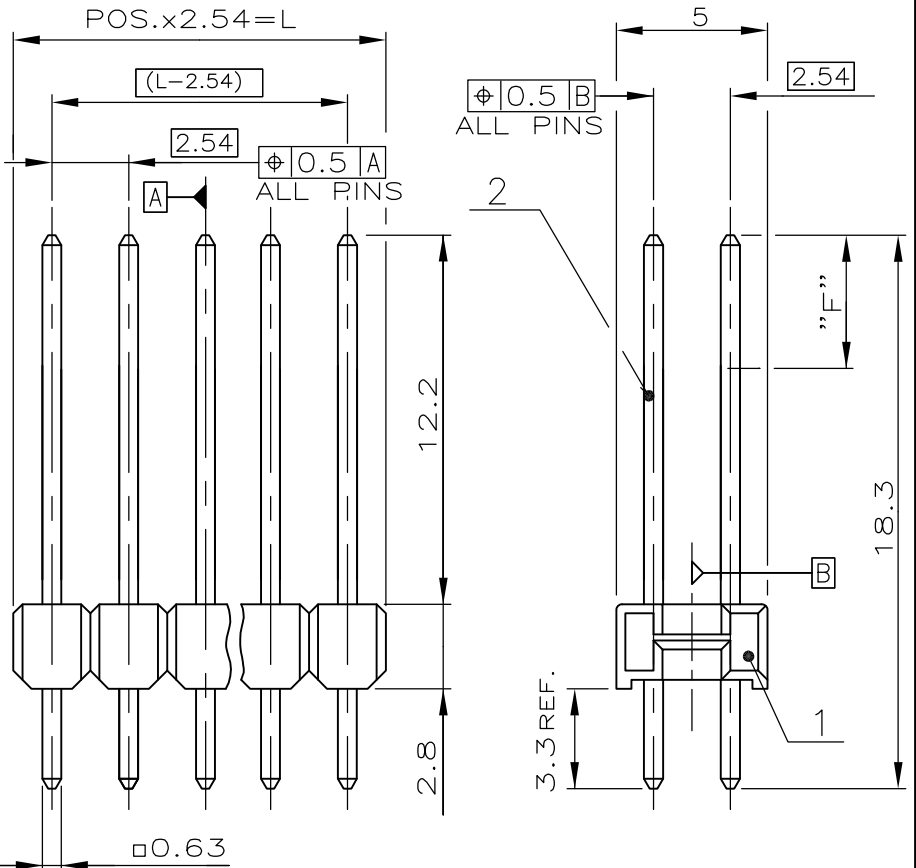


| | | | | |
|-----|------|-----------|-----|--|
| LOC | DIST | REVISIONS | | |
| — | — | P | LTR | DESCRIPTION |
| | | | | DATE |
| | | | | DWN |
| | | | | APVD |
| | | D | | CONTACT PIN BASE MATERIAL AND PLATING CHANGE |
| | | | | 03JUL2014 |
| | | | | KJK |
| | | | | JK |

| POS. PER ROW | L±0.4 | PART NUMBER |
|--------------|--------|---------------|
| — | — | — |
| 2 | 5.08 | △ 2 |
| 3 | 7.62 | △ 3 |
| 4 | 10.16 | △ 4 |
| 5 | 12.70 | △ 5 |
| 6 | 15.24 | 828 080 -6 |
| 7 | 17.78 | △ 7 |
| 8 | 20.32 | 828 080 -8 |
| 9 | 22.86 | △ 9 |
| 10 | 25.40 | 1- 828 080 -0 |
| 11 | 27.94 | 1- 828 080 -1 |
| 12 | 30.48 | △ 1- 2 |
| 13 | 33.02 | △ 1- 3 |
| 14 | 35.56 | △ 1- 4 |
| 15 | 38.10 | △ 1- 5 |
| 16 | 40.64 | △ 1- 6 |
| 17 | 43.18 | △ 1- 7 |
| 18 | 45.72 | 1- 828 080 -8 |
| 19 | 48.26 | 1- 828 080 -9 |
| 20 | 50.80 | △ 2- 0 |
| 21 | 53.34 | 2- 828 080 -1 |
| 22 | 55.88 | 2- 828 080 -2 |
| 23 | 58.42 | 2- 828 080 -3 |
| 24 | 60.96 | 2- 828 080 -4 |
| 25 | 63.50 | 2- 828 080 -5 |
| 26 | 66.04 | 2- 828 080 -6 |
| 27 | 68.58 | 2- 828 080 -7 |
| 28 | 71.12 | 2- 828 080 -8 |
| 29 | 73.66 | 2- 828 080 -9 |
| 30 | 76.20 | △ 3- 0 |
| 31 | 78.74 | 3- 828 080 -1 |
| 32 | 81.28 | △ 3- 2 |
| 33 | 83.82 | 3- 828 080 -3 |
| 34 | 86.36 | 3- 828 080 -4 |
| 35 | 88.90 | 3- 828 080 -5 |
| 36 | 91.44 | △ 3- 6 |
| 37 | 93.98 | 3- 828 080 -7 |
| 38 | 96.52 | 3- 828 080 -8 |
| 39 | 99.06 | 3- 828 080 -9 |
| 40 | 101.60 | △ 4- 0 |
| 41 | 104.14 | 4- 828 080 -1 |
| 42 | 106.68 | 4- 828 080 -2 |
| 43 | 109.22 | 4- 828 080 -3 |
| 44 | 111.76 | 4- 828 080 -4 |
| 45 | 114.30 | 4- 828 080 -5 |
| 46 | 116.84 | 4- 828 080 -6 |
| 47 | 119.38 | 4- 828 080 -7 |
| 48 | 121.92 | 4- 828 080 -8 |
| 49 | 124.46 | 4- 828 080 -9 |
| 50 | 127.00 | 5- 828 080 -0 |



△ MATING SIDE: MIN. 0.7µm PdNi + MIN. 0.1µm Au FLASH BY AREA F OVER 1.27µm Ni
 SOLDER SIDE: MIN. 2.5µm TIN OVER 1.27µm Ni

△ OBSOLETE

| | | | |
|-------------|----------|----------------|----------|
| CONTACT PIN | CuZn | △ | 2 |
| PIN HOUSING | PBT | GREEN | 1 |
| DESCRIPTION | MATERIAL | FINISH COLOR / | ITEM NUM |

RELEASED FOR PUBLICATION

ALL RIGHTS RESERVED.

THIS DRAWING IS UNPUBLISHED.

By -

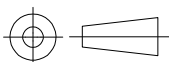
COPYRIGHT

DIMENSIONS:

mm

TOLERANCES UNLESS OTHERWISE SPECIFIED: ±0.2mm

| | |
|--------|-----|
| 0 PLC | ± - |
| 1 PLC | ± - |
| 2 PLC | ± - |
| 3 PLC | ± - |
| 4 PLC | ± - |
| ANGLES | ± - |



| | | | |
|---------------------------|---|-----------------------|------------------------|
| DWN G.HOLAUS | 31.08.89 | MATERIAL SEE TABLE | FINISH - |
| CHK M.SCHAARSCHMIDT | 07.02.90 | TE Connectivity | |
| APVD - | - | | |
| PRODUCT SPEC 108-18012 | NAME AMPMODU II PIN HEADER, DUAL ROW | | |
| APPLICATION SPEC - | SIZE A4 | CAGE CODE 00779 | DRAWING NO C-828080 |
| WEIGHT - | RESTRICTED TO - | | SCALE 4:1 |
| CUSTOMER DRAWING | | SHEET 1 OF 1 | REV D |