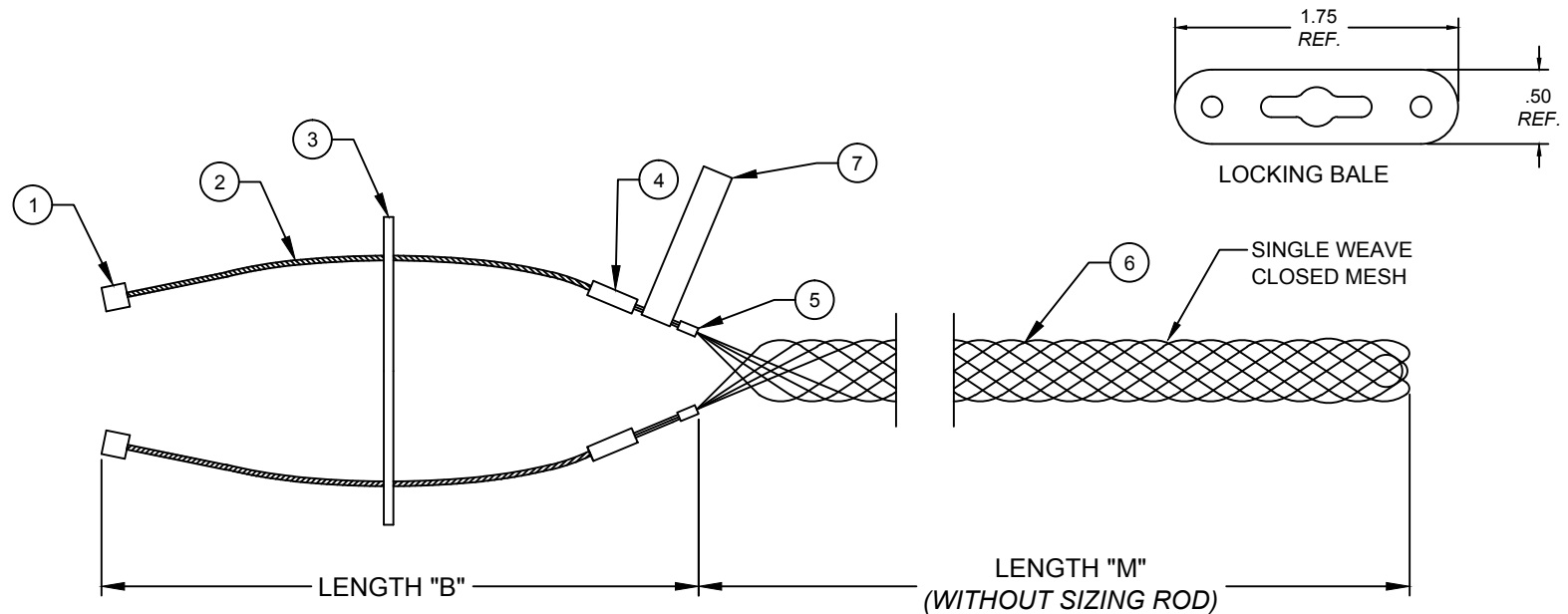


CATALOG NUMBER	MATERIAL NUMBER	CABLE RANGE	LENGTH "M"	LENGTH "B"	APPROXIMATE BREAK STRENGTH* (LBS/N)	UL LISTED	CSA APPROVED	PRODUCT SELECTION NUMBER
36580	1300940510	.22-.32 / 5.6-8.1	3.5±0.50 / 88.9±12.5	12.0±1.0 / 304.8±25.4	650 / 2891	YES	YES	SC022-LB
36582	1300940512	.30-.43 / 7.6-10.9	4.5±0.50 / 114.3±12.5	12.0±1.0 / 304.8±25.4	1100 / 4893			SC030-LB
36584	1300940514	.40-.56 / 10.2-14.2	5.0±0.50 / 127.0±12.5	12.0±1.0 / 304.8±25.4	1100 / 4893			SC041-LB
36587	1300940517	.53-.73 / 13.5-18.5	6.5±0.50 / 165.1±12.5	15.0±1.5 / 381.0±38.1	1100 / 4893			SC053-LB
36589	1300940519	.70-.85 / 17.8-21.6	8.5±1.0 / 215.9±25.4	16.0±1.5 / 406.4±38.1	1900 / 8452			SC070-LB
36591	1300940520	.82-1.00 / 20.8-25.4	8.5±1.0 / 215.9±25.4	16.0±1.5 / 406.4±38.1	1900 / 8452			SC082-LB
36594	1300940521	.96-1.25 / 24.4-31.8	11.0±1.0 / 279.4±25.4	17.0±1.5 / 431.8±38.1	1900 / 8452			SC096-LB

* TO DETERMINE RECOMMENDED WORKING LOAD, DIVIDE BREAK STRENGTH BY 10.



ITEM	DESCRIPTION	MATERIAL
1	BUTTON STOP	ALUMINUM
2	BALE WIRE	GALVANIZED STEEL
3	LOCKING BALE	ZINC PLATED STEEL
4	FERRULE	ALUMINUM
5	CRIMP CONNECTOR	ALUMINUM
6	WIRE MESH	GALVANIZED STEEL
7	LABEL	MYLAR

ADDED UL LISTING EC NO: IPC2016-1391 DRWN: HRUIZ01 2013/10/28 CHKD: HKNEELAN 2013/10/28 APPR: JFMURPHY 2016/05/26	QUALITY SYMBOLS	GENERAL TOLERANCES (UNLESS SPECIFIED)	DIMENSION STYLE	SCALE	DESIGN UNITS	THIRD ANGLE PROJECTION
	▽=0	mm	INCH/MM	NTS	INCH	
	▽C=0	INCH				
		ANGULAR ±1/2°				

DRAWN BY DATE		TITLE	
HRUIZ01	2013/10/28	SUPPORT GRIPS BUS-DROP LOCKING BALE CLOSED MESH	
CHECKED BY DATE		APPROVED BY DATE	
HKNEELAN	2013/10/28	JFMURPHY	2016/05/26
MATERIAL NO.		DOCUMENT NO.	
SEE TABLE		SD-130094-033	
SIZE	THIS DRAWING CONTAINS INFORMATION THAT IS PROPRIETARY TO MOLEX INCORPORATED AND SHOULD NOT BE USED WITHOUT WRITTEN PERMISSION		
A			

MATERIAL NO.		DOCUMENT NO.	
		SD-130094-033	
SHEET NO.		1 OF 1	