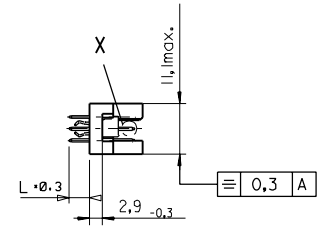
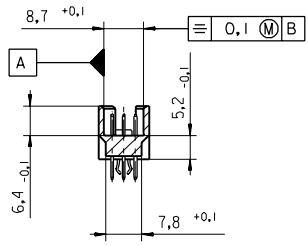
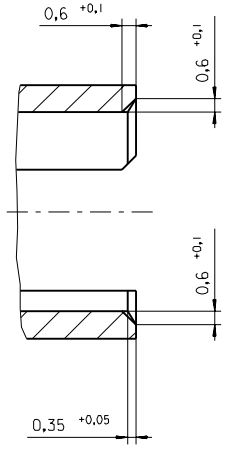
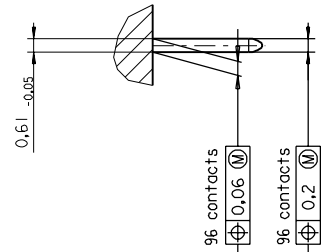


PART NO.
DWG. NO.

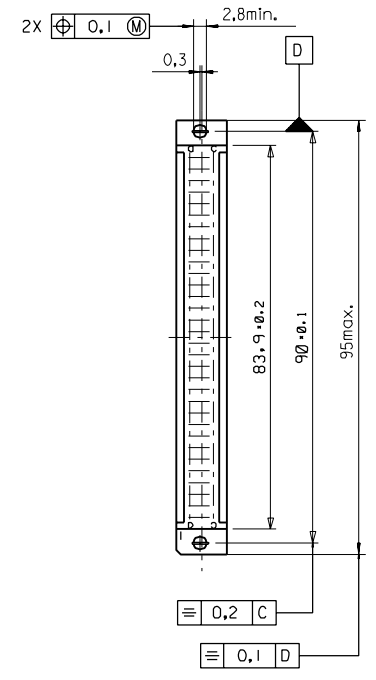
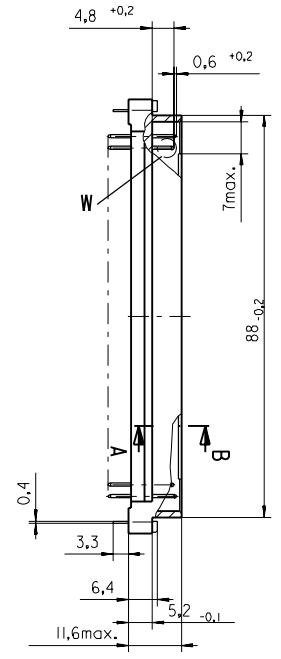
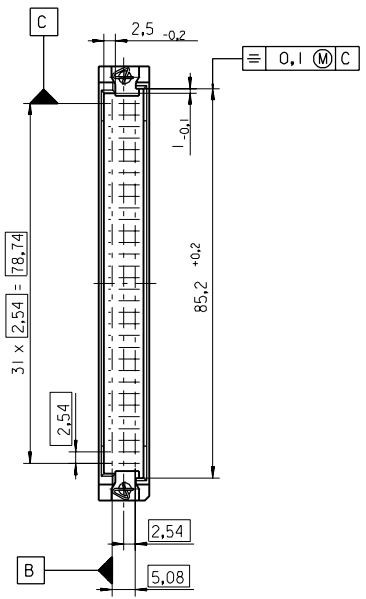
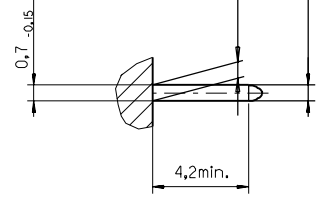
Section A - B
5:1



View X
5:1



View W
5:1



FIRST ANGLE PROJECTION		REVISE ONLY ON CAD SYSTEM		SH.	REV.
UNLESS OTHERWISE SPECIFIED TOLERANCES: ANGULAR ±2° INCH METRIC	DRWG BY	SIGN	CAD/CAM PROJECT NAME	THIS DRAWING CONTAINS INFORMATION THAT IS PROPRIETARY TO MOLEX INC. & SHOULD NOT BE USED WITHOUT WRITTEN PERMISSION	
	Ca		85013000 611		
3 PLACE ± . ±	CHK'D BY	SIGN	TITLE		
2 PLACE ± . ±	KN		96 pos. Male connector acc. DIN 41612 Style R Dimensions		
1 PLACE ± . ±	APP'D BY	SIGN	MOLEX EUROPE		
DRAFT WHERE APPLICABLE MUST REMAIN WITHIN DIMENSIONS	SCALE		SHEET NO. DATE		
DESIGN DIMENSION <input checked="" type="checkbox"/> MM <input type="checkbox"/> IN.	: 1		1 OF 95/06/07		
EQUIVALENT DIMENSION <input type="checkbox"/> MM <input type="checkbox"/> IN.		PART NO.		DWG NO.	SIZE
IF TWO DIMENSIONS ARE SHOWN THE UPPER IS THE DESIGN DIMENSION, LOWER IS SECONDARY			SDA-85013-0001		B

VIEW ON MATING SIDE

A	A	A	A	A	A	A	A	A	A	A	A	A	A	A	A	A	A	A	A	A	A	A	A
A	A	A	A	A	A	A	A	A	A	A	A	A	A	A	A	A	A	A	A	A	A	A	A
A	A	A	A	A	A	A	A	A	A	A	A	A	A	A	A	A	A	A	A	A	A	A	A

~ 1 2 3 4 5 6 7 8 9 10 11 12 13 14 15 16 17 18 19 20 21 22 23 24 25 26 27 28 29 30 31 32 33 34 35 36 37 38 39 40 41 42 43 44 45 46 47 48 49 50 51 52 53 54 55 56 57 58 59 60 61 62 63 64 65 66 67 68 69 70 71 72 73 74 75 76 77 78 79 80 81 82 83 84 85 86 87 88 89 90 91 92 93 94 95 96 97 98 99 100

A = 96 STANDARD CONTACTS L=4,5

Marking	Standard
Performance level	G2/0 = Contact area perform. level2 / Termination tin
Flux proof	no
Fixing clip	no
Dimensions	SDA-85013-0001 sht.1
TechnicalData	PS-85013-0001

A	G2/0	a1-32	b1-32	c1-32	SH. REV.
Contact symbol	Perform. level	Contact position number			

first release see ECN No. 1868	REVISIONS		FOR PREVIOUS REVISIONS SEE MRI LIST
LTR	REVISIONS		
UNLESS OTHERWISE SPECIFIED TOLERANCES: ANGULAR $\pm 2^\circ$		DRWG BY Ca	SIGN
INCH		CHK'D BY KN	SIGN
METRIC		APP'D BY	SIGN
3 PLACE \pm .	<input type="checkbox"/> INCH	DESIGN DIMENSION <input type="checkbox"/> MM <input type="checkbox"/> IN.	
2 PLACE \pm .	<input type="checkbox"/> MILLIMETER	EQUIVALENT DIMENSION <input type="checkbox"/> MM <input type="checkbox"/> IN.	
1 PLACE \pm .	<input type="checkbox"/> MILLIMETER	IF TWO DIMENSIONS ARE SHOWN, THE UPPER IS THE DESIGN DIMENSION, LOWER IS SECONDARY	
DRAFT WHERE APPLICABLE MUST REMAIN WITHIN DIMENSIONS		SCALE	
TITLE		CAD/CAM PROJECT NAME	SH. REV.
96 pos. Male connector acc. DIN 41612 style R contacts arrangement		SDA8501300 S31	THIS DRAWING CONTAINS PROPRIETARY TO MOLEX INC. & SHOULD NOT BE USED WITHOUT WRITTEN PERMISSION
molex MOLEX EUROPE		SHEET NO. 1 OF 1	DATE 95/06/07
PART NO. 85013-0036		DWG NO. SDA-85013-0036	SIZE A