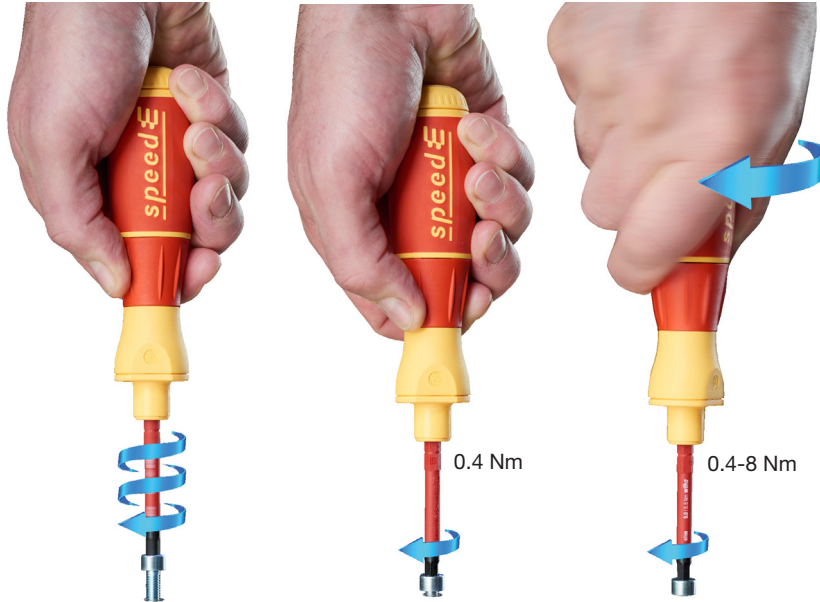


E-SCREWDRIVER speedE® ELECTRIC



speedE Electric 13 Piece Set



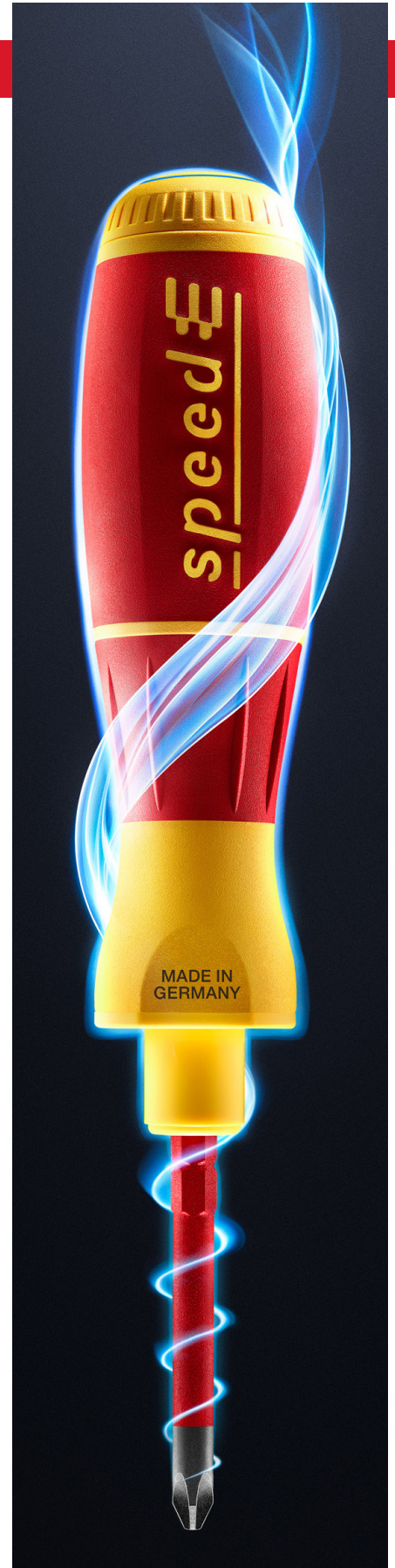
32480 13 Pc. speedE Electric Screwdriver With SlimLine Blades

Certified to EN ISO, BS EN, ASME. Set includes speedE electric 0.4 Nm handle, 8 Insulated SlimLine blades, 2 Li-Ion rechargeable batteries & wall plug adapter/charger.

Item No.	speedE Screwdriver: Handle Range 0.4 Nm	
32480	Insulated SlimLine Blades Include:	 lbs. 2.14
	SlimLine Slotted: 3.5, 5.5mm	
	SlimLine Phillips: #1, #2	
	SlimLine Square: #1, #2	
	SlimLine Terminal Xeno SI/Ph: #1, #2	

1 Year Warranty

Within 30 days of purchase register your speedE at:
USA / MEXICO / SOUTH AMERICA www.wihatools.com/register
CANADA www.wihatools.ca/register



ACCESSORIES

Insulation Test Standards:

Insulation according to EN/IEC 60900, ASTM F-1505, VDE 0682/part 201, DIN 7437, NFPA70E & CSA specification

Integrated Slim Insulation molded directly onto blade

Insulation does not exceed screw head diameter

 **1000 Volt Rated**
10,000 Volt Tested

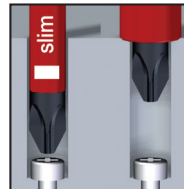


High quality CV steel, through hardened

Wiha

SlimTECHNOLOGY

Achieves blade diameters up to 33% narrower utilizing integrated insulation



Wiha Tools, Ltd.

1348 Dundas Circle
Monticello, MN 55362

Tel 800.494.6104

Fax 763.295.6598

Cservice@wihatools.com

www.wihatools.com

Wiha Insulated Easy TorqueControl Adapters

Add more torque to your speedE with Easy TorqueControl adapters



283 Insulated Easy-TorqueControl

Adapters Ideal for torque sensitive terminations. For use with SlimLine blades.

Repeatable accuracy to +/- 10%

Item No.	Nm	In/lbs	OAL mm	OAL Inch	Weight lbs.
28366	0.8	7.0	60	2.38	.13
28367	2.0	17.7	60	2.38	.13
28368	2.5	23.1	60	2.38	.13
28369	2.8	24.7	60	2.38	.13
28371	4.0	35.4	60	2.38	.13



283 Insulated Slotted SlimLine Blades

Item No.	Size	Slim Dia.	Max Dia.	Nm	Inch/ lbs.	Weight lbs.
28307	2.5	3/32	4.0	0.4	3.5	.02
28308	3.0	1/8	4.0	0.6	5.3	.02
28310	3.5	9/64	4.0	2.5	22.1	.02
28309	4.0	5/32	4.0	2.5	22.1	.02
28312	5.5	7/32	6.0	3.8	33.6	.02
28315	6.5	1/4	6.0	5.5	48.6	.02



283 Insulated Hex Metric SlimLine

Blades Up to 33% narrower.

Item No.	Size	Slim Dia.	Max Dia.	Nm	Inch/ lbs.	Weight lbs.
28332	1.5	4.0	0.9	7.9	.02	
28333	2.0	4.0	1.8	15.9	.02	
28334	2.5	4.0	3.8	33.6	.02	
28335	3.0	4.0	5.5	48.7	.02	
28336	4.0	6.0	5.5	48.7	.02	
28337	5.0	6.0	5.5	48.7	.02	
28338	6.0	6.0	5.5	48.7	.02	



283 Insulated Phillips SlimLine Blades

SlimLine blades have up to 33% narrower insulation diameter than standard insulated tools.

Item No.	Size	Slim Dia.	Max Dia.	Nm	Inch/ lbs.	Weight lbs.
28317	1	4.0	3.8	33.7	.02	
28319	2	6.0	5.5	48.8	.02	



283 Insulated Pozidriv® SlimLine Blades

Item No.	Size	Slim Dia.	Max Dia.	Nm	Inch/ lbs.	Weight lbs.
28330	1	4.0	3.8	33.7	.02	
28331	2	6.0	5.5	48.8	.02	



283 Insulated Square SlimLine Blades

Item No.	Size	Slim Dia.	Max Dia.	Nm	Inch/ lbs.	Weight lbs.
28346	1	4.0	3.8	33.6	.02	
28347	2	6.0	5.5	48.7	.02	



283 Insulated Xeno Slotted/Pozidriv®

SlimLine Blades Up to 33% narrower.

Item No.	Size	Slim Dia.	Max Dia.	Nm	Inch/ lbs.	Weight lbs.
28320	1	4.0	3.8	33.6	.02	
28321	2	6.0	5.5	48.7	.02	



283 Insulated TORX® SlimLine Blades

Item No.	Size	Slim Dia.	Max Dia.	Nm	Inch/ lbs.	Weight lbs.
28339	T8	4.0	1.3	11.5	.02	
28344	T9	4.0	1.3	11.5	.02	
28340	T10	4.0	3.8	33.6	.02	
28341	T15	6.0	5.5	48.7	.02	
28342	T20	6.0	5.5	48.7	.02	
28343	T25	6.0	5.5	48.7	.02	



283 Insulated Xeno Slotted/Phillips

SlimLine Blades Up to 33% narrower.

Item No.	Size	Slim Dia.	Max Dia.	Nm	Inch/ lbs.	Weight lbs.
28327	1	4.0	3.8	33.6	.02	
28329	2	6.0	5.5	48.7	.02	



28372 7 Piece SlimLine Blade Set

Item No.	Slotted: 2.5, 3.5, 5.5mm	Weight lbs.
28372	Phillips: #1, #2 Square: #1, #2	.14



28373 7 Piece SlimLine Blade Set

Item No.	Slotted: 2.5, 3.5, 5.5mm	Weight lbs.
28373	Phillips: #1, #2 Xeno Sit/Ph: #1, #2	.14