



PRODUCT DATASHEET

Rose series

last update 25/11/2016

DETAILS

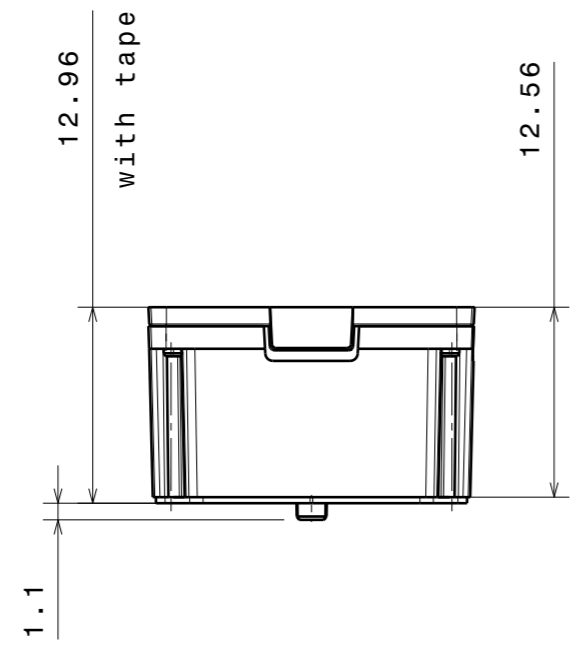
Product Number	FA15232_ROSE-MRK-M
Family	Rose
Type	Assembly
Color	white
Diameter	21,6 x 21,6 mm
Height	12,55 mm
Style	square
Optic Material	PC
Holder Material	
Fastening	tape, pin
Status	production ready
ROHS Compliant	Yes
Date Updated	25/11/2016



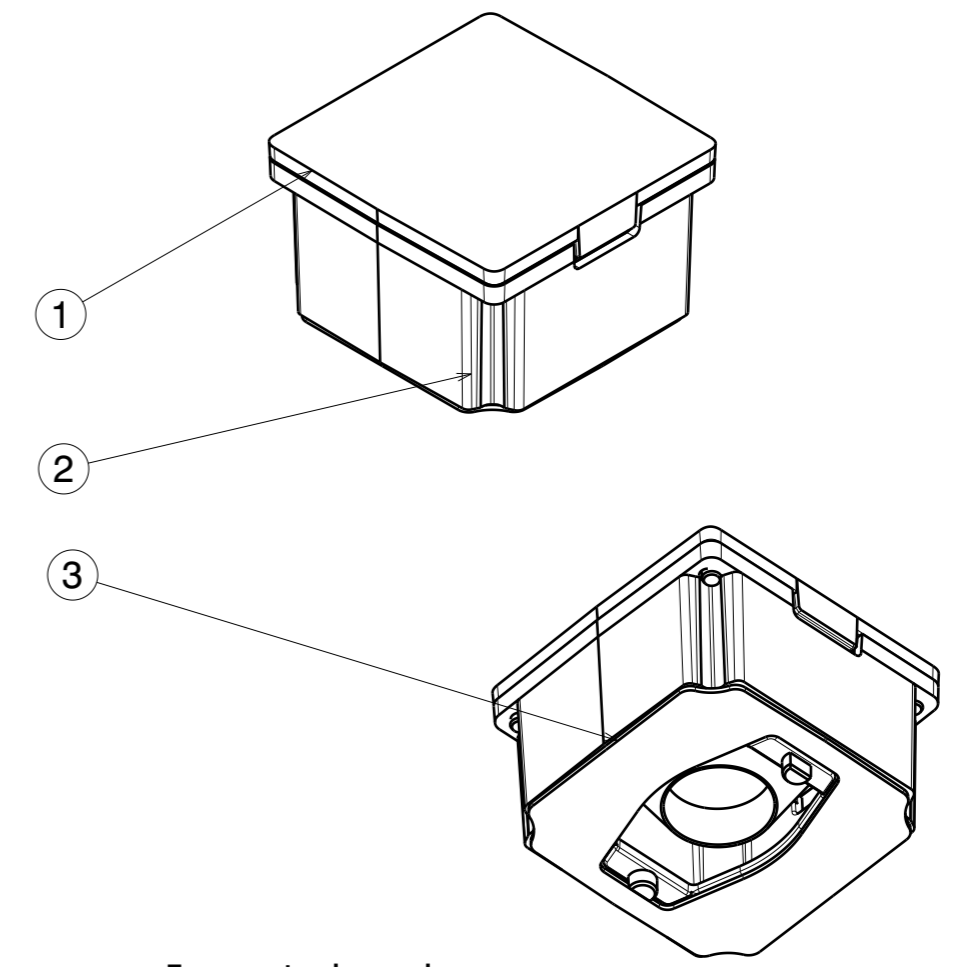
OPTICAL PROPERTIES

	Viewing	Light	Effi-		
LED	Angle	Beam	ciency	cd/lm	Connector
LUXEON M/MX	45 deg	Medium	86 %	1.360	-

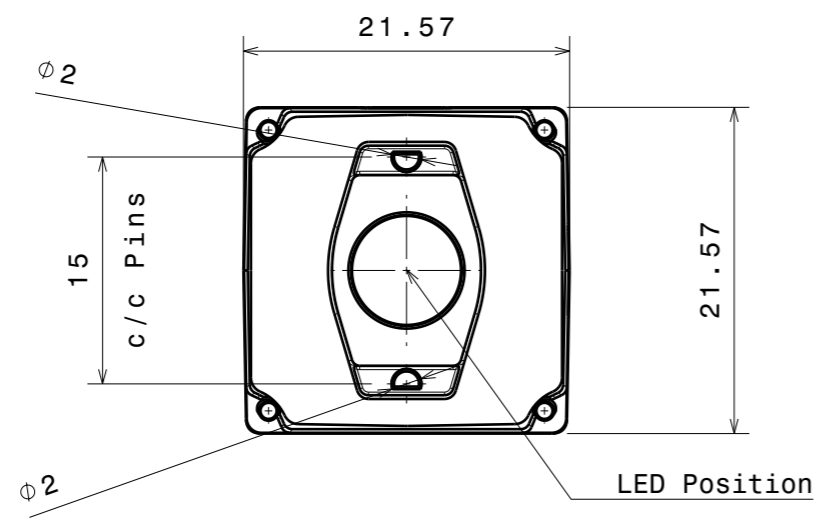
H G F E D C B A



Front view




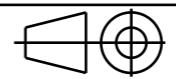
Isometric view



Bottom view

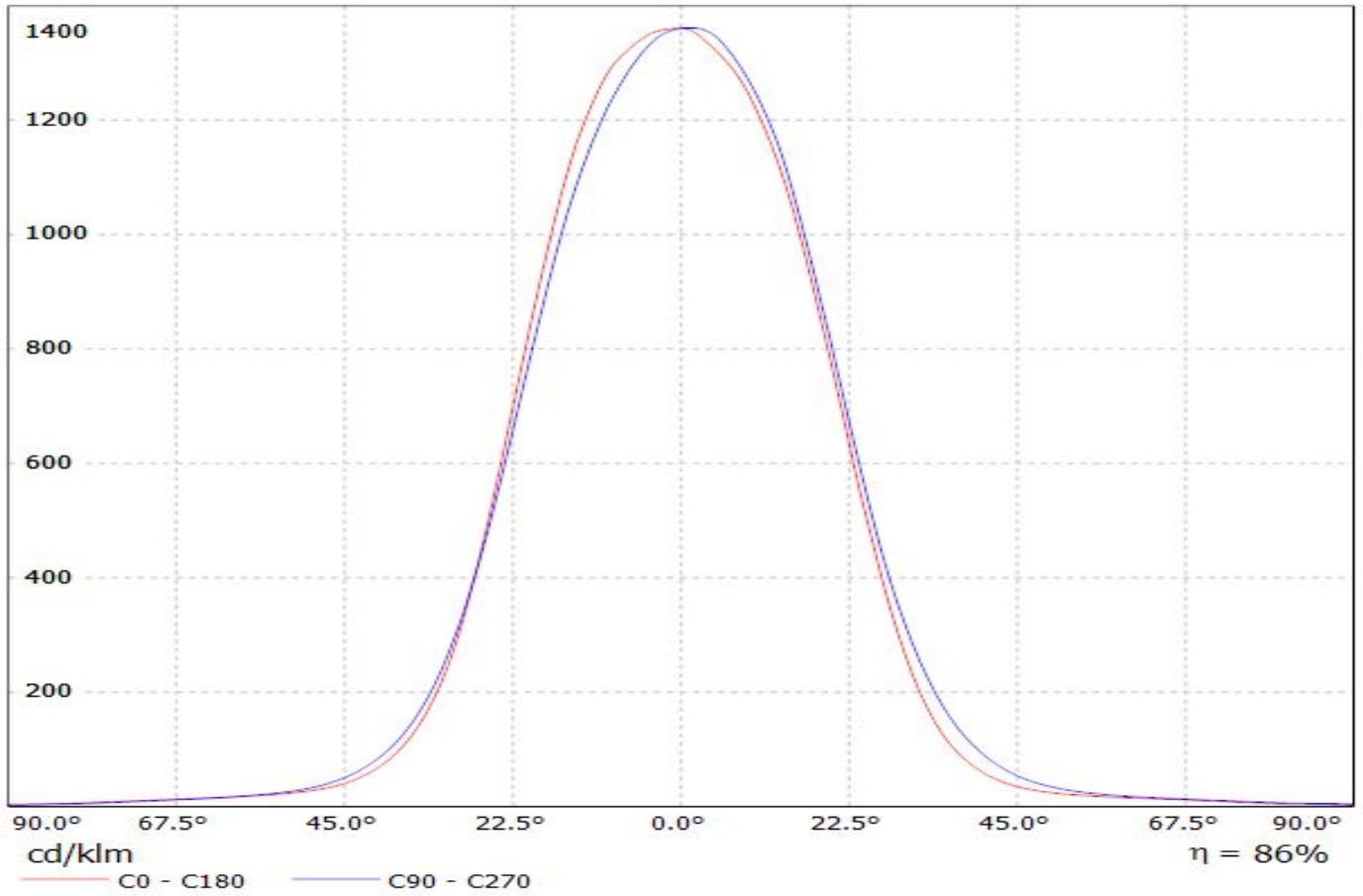
FA15229	ROSE-MRK-S
FA15232	ROSE-MRK-M
FA15233	ROSE-MRK-W

INDEX	PART NO	DESCRIPTION	MATERIAL	COLOUR
1	-	ROSE-MRK S/M/W	PC	clear
2	F14946	ROSE-Lt-HLD-MRK	PC	white
3	F14629	ROSE-TAPE	two-sided adhesive foam tape	

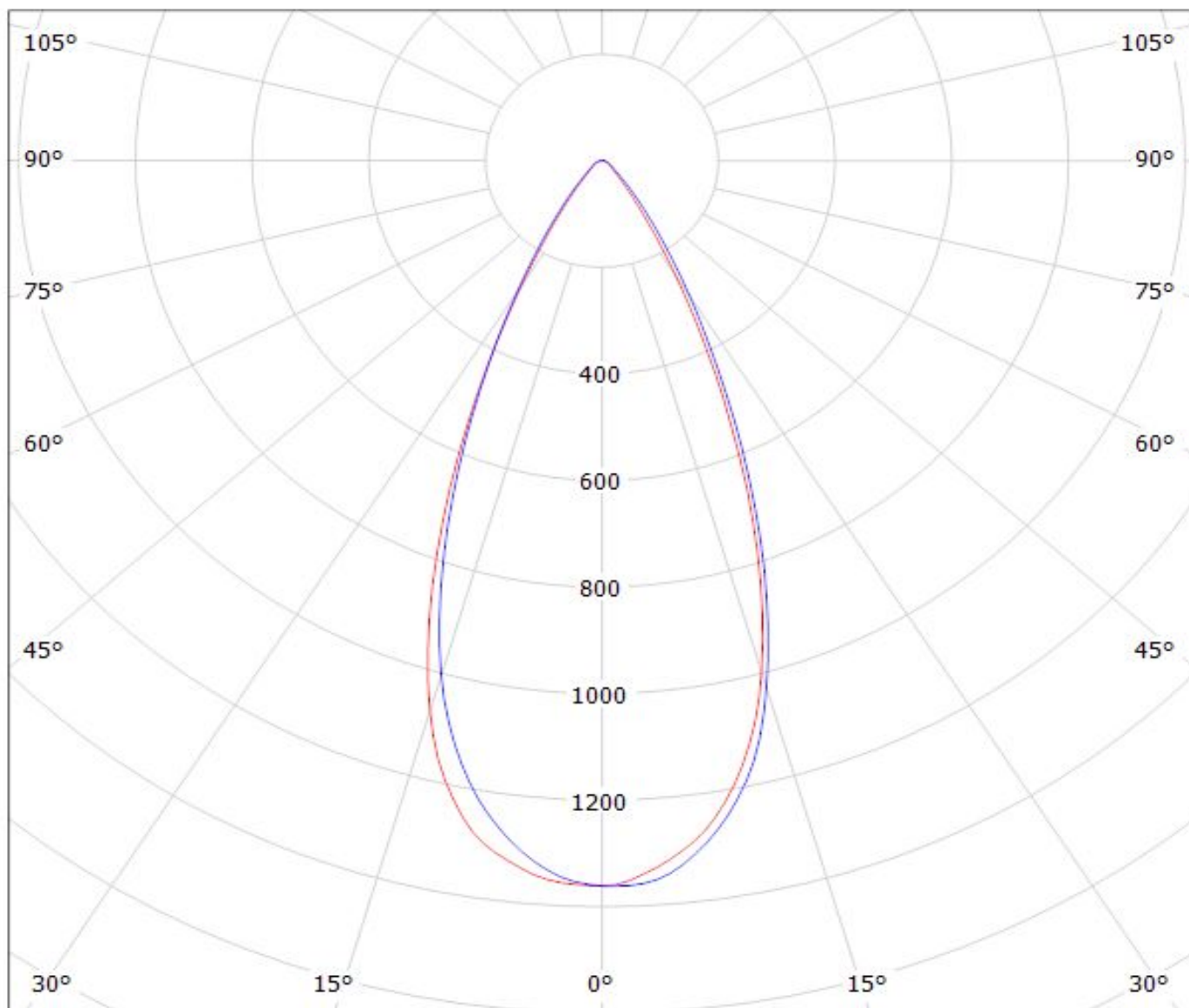
<p>Tolerances if not otherwise shown According to DIN ISO 2768-1 Linear measures: Up to 30mm class M, otherwise class C. According to DIN ISO 2768-2 Form and position: class L</p>	 LediL Oy Salorankatu 10 FIN 24240 SALO Finland	
	THIRD ANGLE PROJECTION:  DRAWING TITLE ROSE-MRK MechanicalDrawing	
This drawing is the property of LEDiL Oy. It may not be reproduced, copied or communicated without a written agreement with LEDiL Oy.	SIZE A3	PART NUMBER FA15229/FA15232/FA15233
	SCALE 2:1	WEIGHT -

H G B A

Luminaire: LEDiL Oy F14952_ROSE-MRK-M_(Luxeon_M)_C4
Lamps: 1 x Luxeon_M_(LXR8-SW40)_382.455lm@250mA_P=2.77478W_I=0.250A



Luminaire: LEDiL Oy F14952_ROSE-MRK-M_(Luxeon_M)_C4
Lamps: 1 x Luxeon_M_(LXR8-SW40)_382.455lm@250mA_P=2.77478W_I=0.250A



cd/klm

— C0 - C180 — C90 - C270

$\eta = 86\%$

NOTE: The typical divergence will be changed by different color, chip size and chip position tolerance. The typical total divergence is the full angle measured where the luminous intensity is half of the peak value.