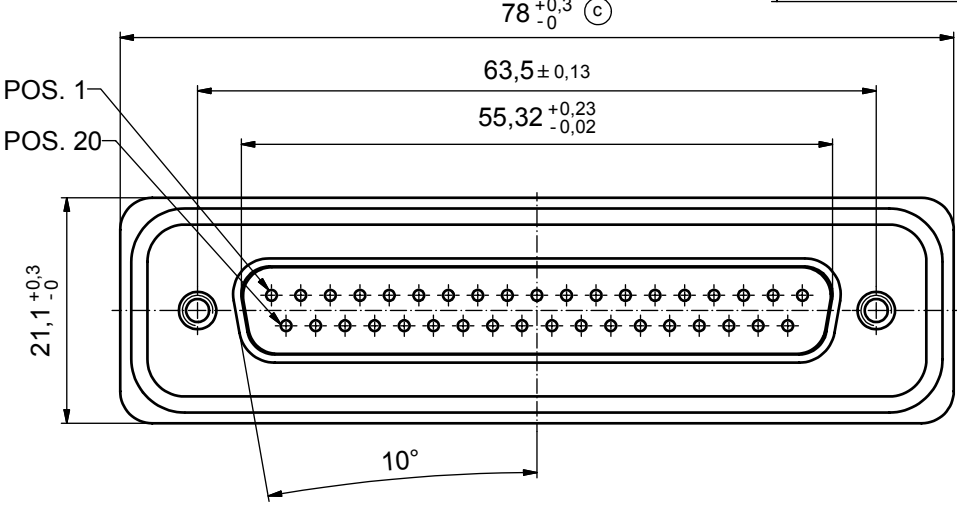
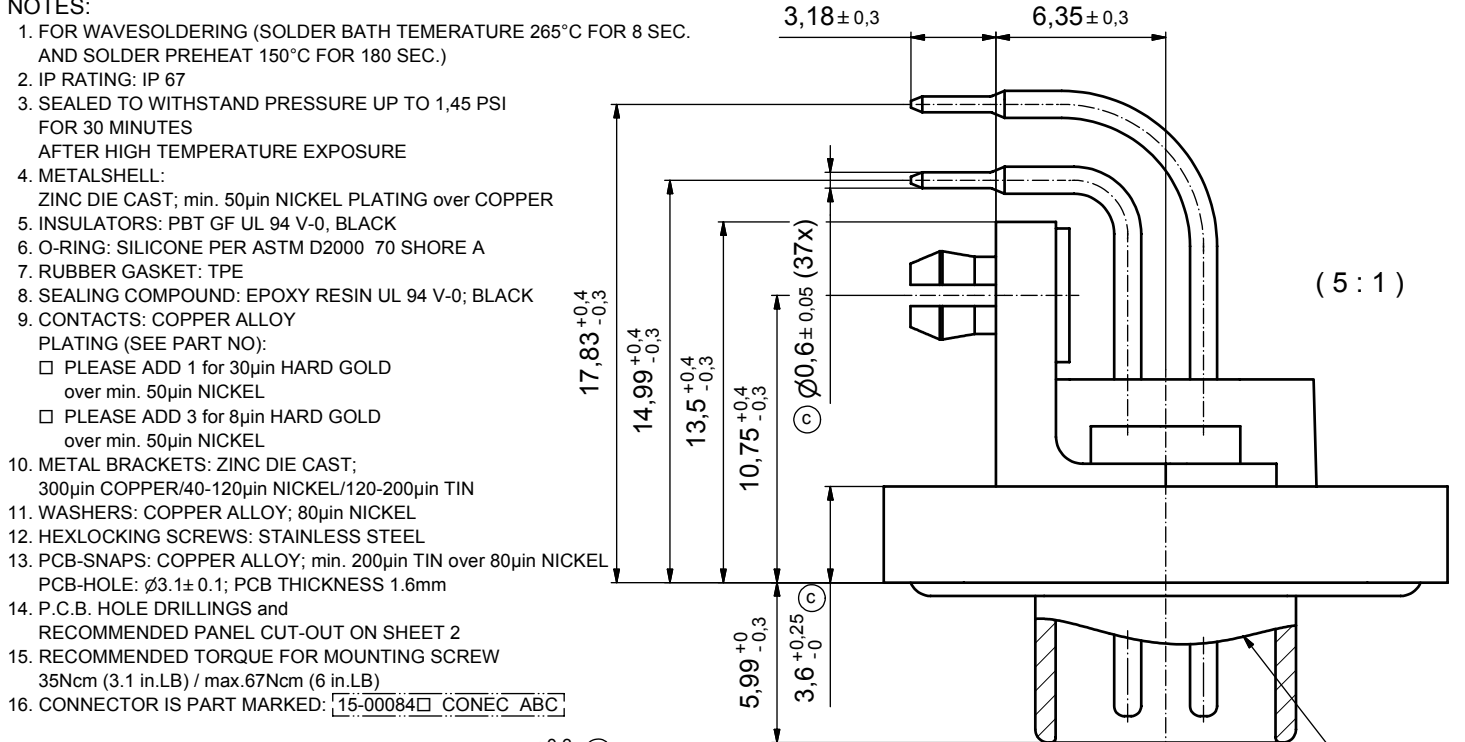
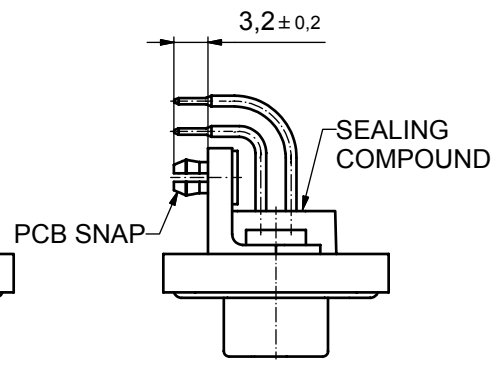
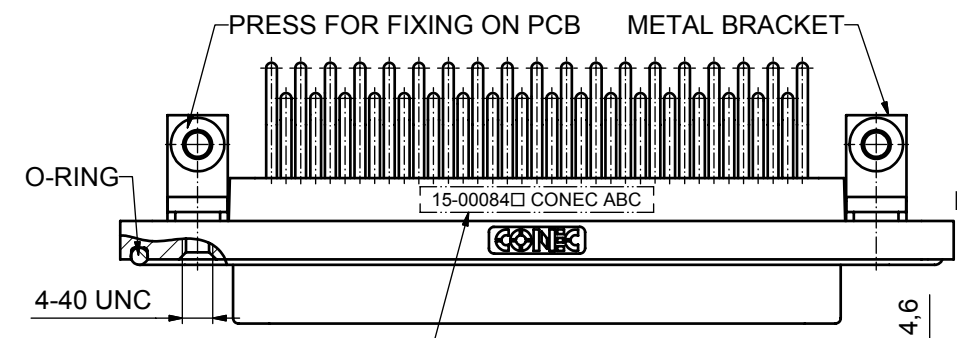
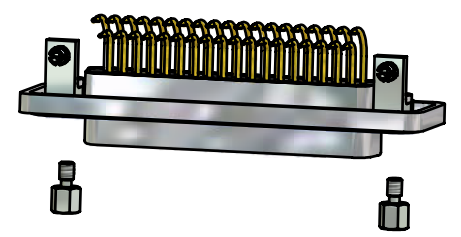


NOTES:

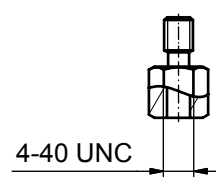
1. FOR WAVESOLDERING (SOLDER BATH TEMPERATURE 265°C FOR 8 SEC. AND SOLDER PREHEAT 150°C FOR 180 SEC.)
2. IP RATING: IP 67
3. SEALED TO WITHSTAND PRESSURE UP TO 1,45 PSI FOR 30 MINUTES AFTER HIGH TEMPERATURE EXPOSURE
4. METAL SHELL:
ZINC DIE CAST; min. 50µin NICKEL PLATING over COPPER
5. INSULATORS: PBT GF UL 94 V-0, BLACK
6. O-RING: SILICONE PER ASTM D2000 70 SHORE A
7. RUBBER GASKET: TPE
8. SEALING COMPOUND: EPOXY RESIN UL 94 V-0; BLACK
9. CONTACTS: COPPER ALLOY PLATING (SEE PART NO):
 PLEASE ADD 1 for 30µin HARD GOLD over min. 50µin NICKEL
 PLEASE ADD 3 for 8µin HARD GOLD over min. 50µin NICKEL
10. METAL BRACKETS: ZINC DIE CAST; 300µin COPPER/40-120µin NICKEL/120-200µin TIN
11. WASHERS: COPPER ALLOY; 80µin NICKEL
12. HEXLOCKING SCREWS: STAINLESS STEEL
13. PCB-SNAPS: COPPER ALLOY; min. 200µin TIN over 80µin NICKEL PCB-HOLE: $\varnothing 3.1 \pm 0.1$; PCB THICKNESS 1.6mm
14. P.C.B. HOLE DRILLINGS and RECOMMENDED PANEL CUT-OUT ON SHEET 2
15. RECOMMENDED TORQUE FOR MOUNTING SCREW 35Ncm (3.1 in.LB) / max.67Ncm (6 in.LB)
16. CONNECTOR IS PART MARKED: 15-00084 CONEC ABC



RUBBER GASKET PLACED ON TOP SURFACE OF MALE INSULATOR



SEE NOTE 16



AT ALL TIMES WATER RESISTANT CONNECTORS NOT IN USE SHOULD BE COVERED WITH A CONEC WATER RESISTANT CAP OR WATER TIGHT HOOD.

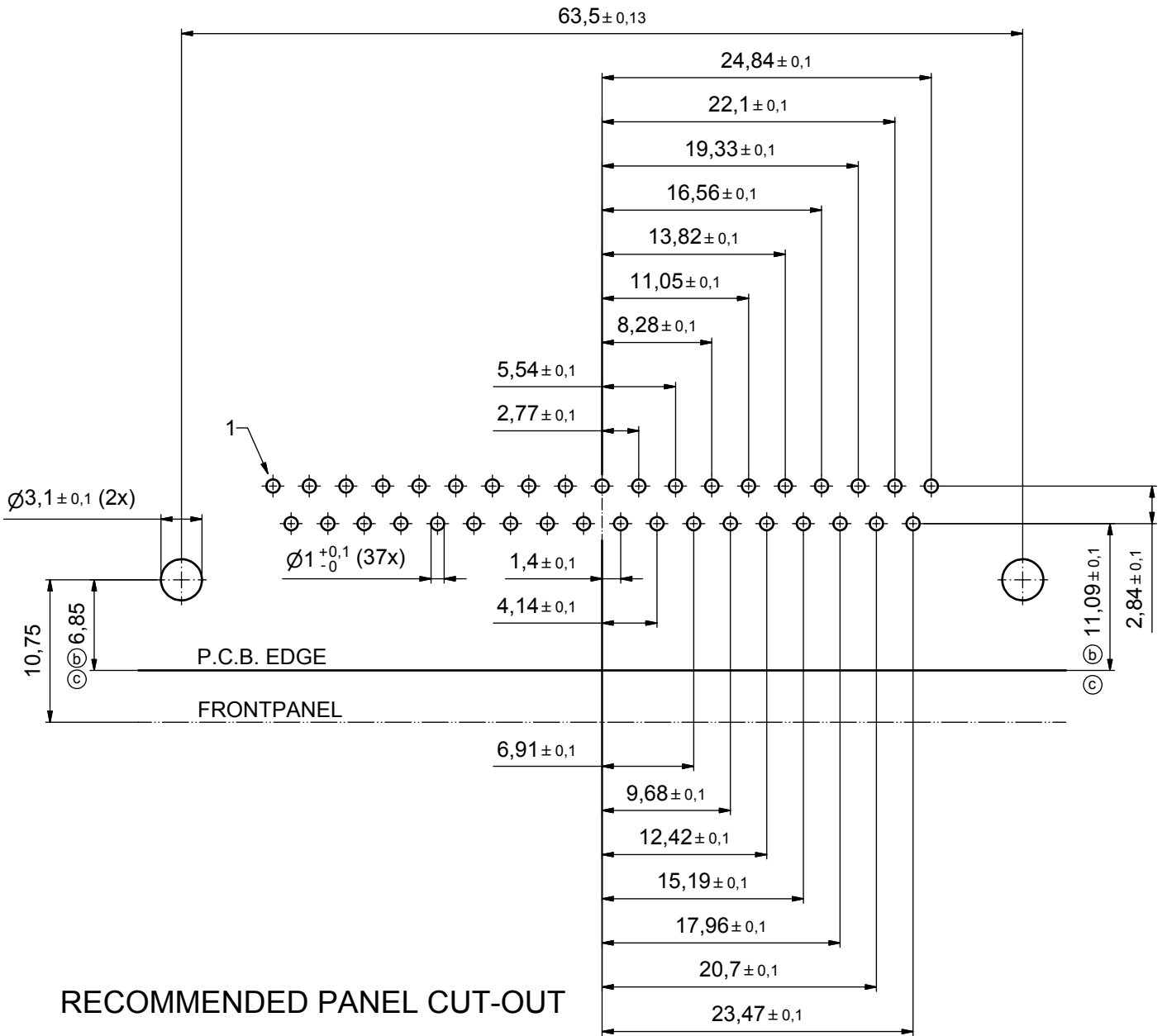


| | |
|---|--------|
| APPROVAL # FREIGABE # DEBLOCAGE # AUTORIZACION # APPROVAL | |
| CUSTOMER APPROVAL DATE: | |
| NAME: | TITLE: |
| COMPANY NAME: | |
| APPROVAL # FREIGABE # DEBLOCAGE # AUTORIZACION # APPROVAL | |

| | | | | | | |
|----------------------------------|--|--|--|--------------------------------|--|--|
| tolerance | | | | dim. in mm | scale: 2:1 (5:1) | |
| material: see notes | | | | | title: D-SUB MALE 90° 37pos. SOLDER PIN ANGLED with metal bracket, hexlocking screw and snap | |
| DRAWING BY HAND | | | | drawn: 14.10.08 Petker | dwg no: Inventor 10 | |
| DO NOT ALTER CAD DRAWING BY HAND | | | | appd: 23.10.08 Fischer | 15K1A320 | |
| 4 x c A 3435 08.10.09 HS | | | | norm: | DIN-A3 | |
| a Origin | | | | d-old | sh: 1 | |
| rev. description date name | | | | part no: 15-00084 (see note 9) | | |



P.C.B. HOLE DRILLINGS



| | |
|---|--------|
| APPROVAL # FREIGABE # DEBLOCAGE # AUTORIZACION # APPROVAL | |
| CUSTOMER APPROVAL DATE: | |
| NAME: | TITLE: |
| COMPANY NAME: | |
| APPROVAL # FREIGABE # DEBLOCAGE # AUTORIZACION # APPROVAL | |

| | | | | | | | | |
|--|-------------|----------|------|-----------|----------|---------------------|---|--------|
| THIS DRAWING MAY NOT BE COPIED OR REPRODUCED IN ANY WAY, AND MAY NOT BE PASSED ON TO A THIRD PARTY WITHOUT WRITTEN PERMISSION. OWNERSHIP AND COPYRIGHT OF CONEC GmbH | | | | tolerance | | dim. in mm | scale: 3:1 | |
| DO NOT ALTER CAD DRAWING BY HAND | | | | | | | material: see sheet 1 | |
| 2 x c | A 3435 | 08.10.09 | HS | date | 14.10.08 | name | title: P.C.B. HOLE DRILLINGS | |
| 2 x b | A 3344 | 15.04.09 | HS | appd. | 23.10.08 | Fischer | PANEL CUT-OUT | |
| a | Origin | | | norm | | | D-SUB Male 37pos. Solder pin angled 90° | |
| rev. | description | date | name | CONEC® | | dwg no: Inventor 10 | | DIN-A3 |
| | | | | | | | sh: 2 | |
| | | | | | | | part no: see sheet 1 | |