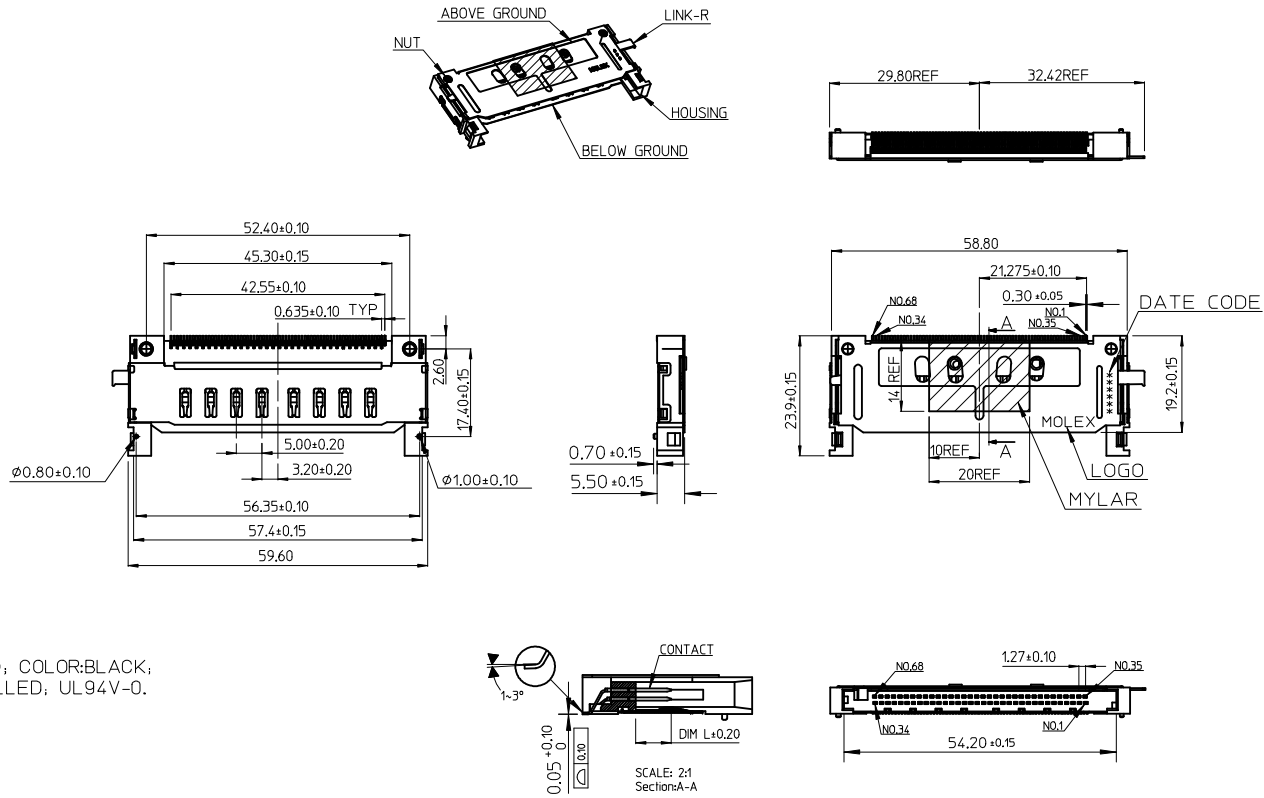


| INTERFACE DIM L | PIN NUMBER       |
|-----------------|------------------|
| 3.5MM           | 36,67            |
| 4.25MM          | ALL OTHER PINS   |
| 5.0MM           | 1,17,34,35,51,68 |



NOTES:

- 1.MATERIAL:
  - 1-1.HOUSING: LIQUID CRYSTAL POLYMER(LCP); COLOR:BLACK; GLASS AND MINERAL FIBER FILLED; UL94V-0.
  - 1-2.CONTACT: BRASS.
  - 1-3.LINK-R: STAINLESS STEEL.
  - 1-4.ABOVE GROUND: STAINLESS STEEL.
  - 1-5.NUT: BRASS, M2.
  - 1-6.BELOW GROUND: COPPER ALLOY.
- 2.PLATING:
  - 2-1.CONTACT: GOLD PLATING 15 MICROINCH MIN. ON CONTACT AREA; TIN PLATING 100~200 MICROINCH ON SOLDER AREA; NICKEL UNDER PLATE OVERALL.
  - 2-2.ABOVE GROUND: NICKEL PLATING OVERALL.
  - 2-3.NUT: NICKEL PLATING OVERALL.
  - 2-4.BELOW GROUND: GOLD FLASH ON ON GROUND CONTACT AREA; NICKEL UNDER PLATE OVERALL.
- 3.COPLANARITY OF SMT TERMINAL:0.10MM MAXIMUM.
- 4.PACKAGE SPECIFICATION REFER TO PK-48250-001.
- 5.PRODUCT SPECIFICATION REFER TO PS-48250-001.
- 6.TEST SUMMARY REFER TO TS-48250-001.
- 7.DATE CODE: \*\* \*\* \*\*
 

|      |
|------|
| DAY  |
| WEEK |
| YEAR |
- 8.LEAD FREE & ROHS COMPLIANT PRODUCT.

| <b>NEW RELEASE</b><br>EC NO: SH2006-0790<br>DRW:RTSAI<br>CHKD:<br>APPR:WMSCHANG   | 2006/08/09<br>2006/08/09<br>2006/08/21               | DESCRIPTION<br>REV   | QUALITY SYMBOLS            | GENERAL TOLERANCES (UNLESS SPECIFIED)   | DIMENSION STYLE | SCALE | DESIGN UNITS | THIRD ANGLE PROJECTION |       |       |          |       |       |          |        |       |         |        |       |         |     |        |  |
|---|--|----------------------|----------------------------|---|-----------------|-------|--------------|------------------------|-------|-------|----------|-------|-------|----------|--------|-------|---------|--------|-------|---------|-----|--------|--|
|   |  |                      | $\nabla=0$<br>$\nabla C=0$ | <table border="1"> <thead> <tr> <th></th> <th>mm</th> <th>INCH</th> </tr> </thead> <tbody> <tr> <td>4 PLACES</td> <td>± ---</td> <td>± ---</td> </tr> <tr> <td>3 PLACES</td> <td>± ---</td> <td>± ---</td> </tr> <tr> <td>2 PLACES</td> <td>± 0.25</td> <td>± ---</td> </tr> <tr> <td>1 PLACE</td> <td>± 0.25</td> <td>± ---</td> </tr> </tbody> </table> |                 | mm    | INCH         | 4 PLACES               | ± --- | ± --- | 3 PLACES | ± --- | ± --- | 2 PLACES | ± 0.25 | ± --- | 1 PLACE | ± 0.25 | ± --- | MM ONLY | 1:1 | METRIC |  |
|   |  |                      |                            | mm  | INCH            |       |              |                        |       |       |          |       |       |          |        |       |         |        |       |         |     |        |  |
|   |  |                      | 4 PLACES                   | ± ---   | ± ---           |       |              |                        |       |       |          |       |       |          |        |       |         |        |       |         |     |        |  |
| 3 PLACES  | ± ---  | ± ---                |                            |   |                 |       |              |                        |       |       |          |       |       |          |        |       |         |        |       |         |     |        |  |
| 2 PLACES  | ± 0.25   | ± ---                |                            |   |                 |       |              |                        |       |       |          |       |       |          |        |       |         |        |       |         |     |        |  |
| 1 PLACE   | ± 0.25   | ± ---                |                            |   |                 |       |              |                        |       |       |          |       |       |          |        |       |         |        |       |         |     |        |  |
|   | ANGULAR ± 3 °  | DRAWN BY DATE        | TITLE                      | <b>CARBUS LEFT BOTTOM MOUNT REVERSE HEADER (LEAD-FREE VERSION)</b><br><b>MOLEX INCORPORATED</b>   |                 |       |              |                        |       |       |          |       |       |          |        |       |         |        |       |         |     |        |  |
|   | DRAFT WHERE APPLICABLE MUST REMAIN WITHIN DIMENSIONS | DICK DONG 2006/07/12 |                            |   |                 |       |              |                        |       |       |          |       |       |          |        |       |         |        |       |         |     |        |  |
|   |  | APPROVED BY DATE     | ROGER TSAI 2006/07/12      | MATERIAL NO. 48250-0002<br>DOCUMENT NO. SD-48250-002<br>SHEET NO. 1 OF 1  |                 |       |              |                        |       |       |          |       |       |          |        |       |         |        |       |         |     |        |  |
|   |  | ALLEN LIN 2006/07/12 |                            |   |                 |       |              |                        |       |       |          |       |       |          |        |       |         |        |       |         |     |        |  |
| THIS DRAWING CONTAINS INFORMATION THAT IS PROPRIETARY TO MOLEX INCORPORATED AND SHOULD NOT BE USED WITHOUT WRITTEN PERMISSION |  |                      |                            |   |                 |       |              |                        |       |       |          |       |       |          |        |       |         |        |       |         |     |        |  |