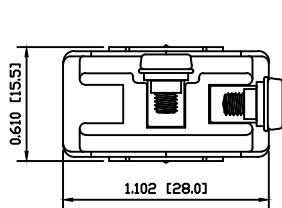


MATERIALS

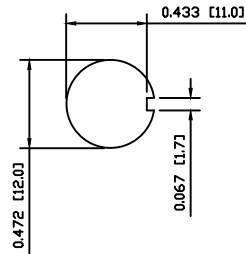
- BODY:
Phenolic, UL94 V-0
- ACTUATOR:
Nickel Plated Brass
- BUSHING:
Nickel Plated Brass
- HOUSING:
Nickel Plated Steel
- HARDWARE:
Nickel Plated Brass
- SPACER PLATE:
Epoxy Board
- SPRING:
Steel
- ACTUATOR PLUNGER:
Phenolic, UL94 V-0
- MOBILE CONTACT BAR:
Silver Plated Copper
- CENTER PIVOT:
Silver Plated Copper
- CONTACTS:
Silver Alloy Clad Copper
- TERMINALS:
Brass
Steel

SPECIFICATIONS

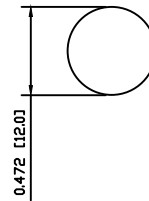
- FUNCTION:
1P1T OFF-(ON)
- RATINGS:
ANSI/UL1054 and CAN/CSA C22.2 No.55 (E194579):
20A 125VAC [cURus]
15A 277VAC [cURus]
1.5HP 125/277VAC [cURus]
- CONTACT RESISTANCE:
Initial: 10mΩ Max.
- INSULATION RESISTANCE:
10MΩ Min.
- DIELECTRIC STRENGTH:
1,500VAC for 1 Minute
- OPERATING LIFE:
6,000 Cycles [cURus]
- TEMPERATURE:
Operating: 0°C to 85°C [cURus]



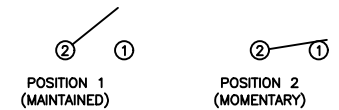
SUGGESTED PANEL CUTOUT



ALTERNATE PANEL CUTOUT



SCHEMATIC



| | | | |
|----------------|------|----------|-----|
| ACTUATOR | B | 10/06/10 | CAB |
| BODY | B | 10/06/10 | CAB |
| MATERIALS | B | 10/06/09 | CAB |
| SPECIFICATIONS | B | 10/06/09 | CAB |
| REFERENCE | REV. | DATE | BY |

THE INFORMATION CONTAINED IN THIS DOCUMENT IS PROPRIETARY TO E-SWITCH AND IS NOT TO BE COPIED OR TRANSFERRED.

| | | | | |
|------|---|----------|----------|----------|
| B | CORRECTED PANEL CUTOUT, SPECIFICATIONS, AND MATERIALS | 19133 | 10/06/10 | CAB |
| A | INITIAL RELEASE | PCRD0051 | 06/08/05 | CAB |
| REV. | DESCRIPTION | PCR | DATE | DRAWN BY |

| | |
|----------------------|------------|
| DIMENSIONS | |
| INCHES [MILLIMETERS] | |
| GENERAL TOLERANCES | |
| ±0.008 [±0.2] / ±1* | |
| SCALE | PROJECTION |
| DRAWING NOT TO SCALE | 1st Angle |

| | | | |
|----------------|---------------|----------|--|
| | | TITLE | |
| | | ST164D00 | |
| DRAWING NUMBER | DATE | REVISION | |
| 34-ST164D00 | JUNE 10, 2010 | B | |