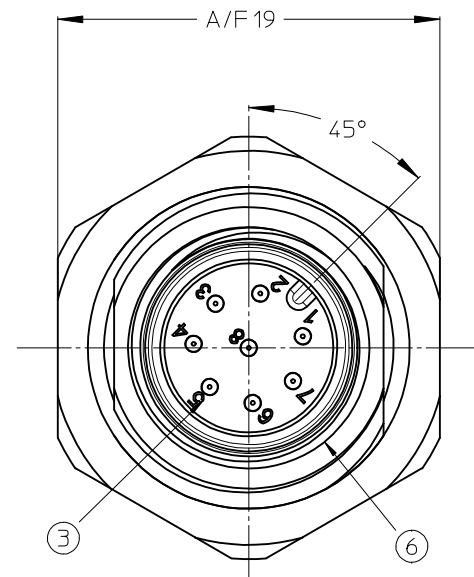
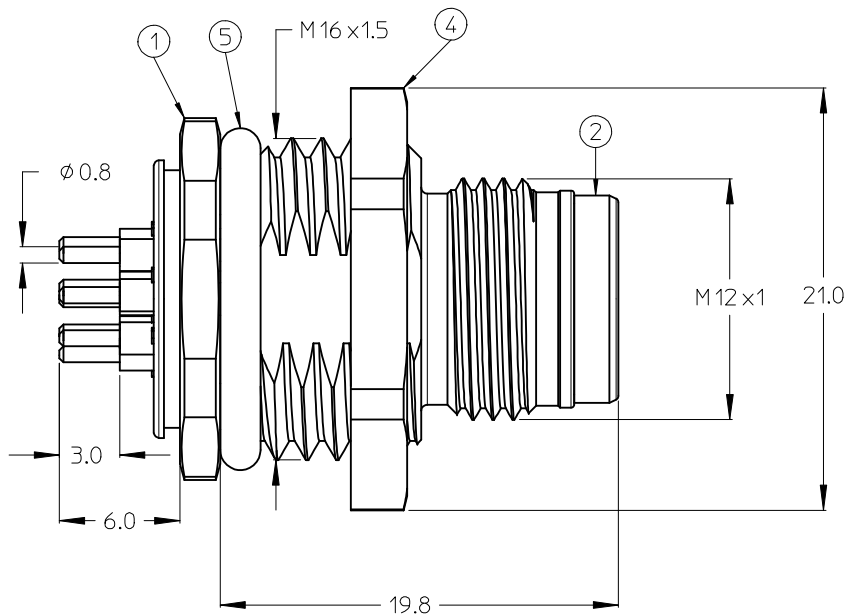
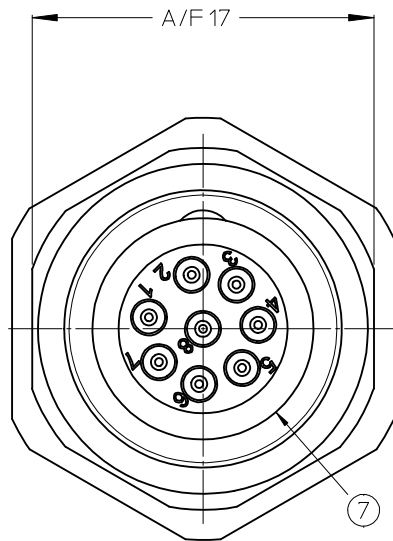
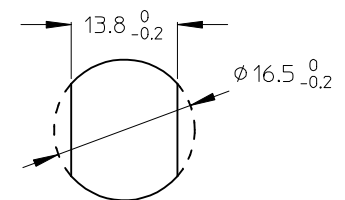
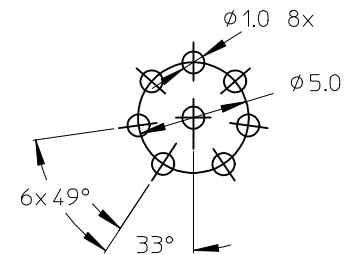
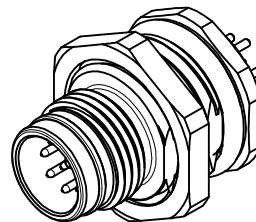


10 9 8 7 6 5 4 3 2 1



| ITEM | COMPONENT        | MATERIAL     | FINISH        |
|------|------------------|--------------|---------------|
| 1    | REC SHELL        | BRASS        | NICKEL PLATED |
| 2    | INSERT           | PA           | BLACK         |
| 3    | CONTACT          | BRASS / GOLD | CuZn Ni/ Au   |
| 4    | M16 NUT          | BRASS        | NICKEL PLATED |
| 5    | O-RING           | NBR          | BLACK         |
| 6    | O-RING           | VITON        | RED           |
| 7    | POTTING MATERIAL | WEVO         | NONE          |



POL MATERIAL NO. ENGINEERING NO.  
8 1200840032 WR8U46000

VOLTAGE RATING: 30 VAC / 36 VDC  
 AMPERAGE RATING: 2 A  
 PROTECTION CLASS: IP 67/68/69K  
 OPERATING TEMPERATURE: -25°C / 90°C  
 UL CERTIFICATION: FILE NO. E152210  
 CSA CERTIFICATIONS: FILE NO. LR6837

|  |                               |                                       |  |                            |                               |   |  |                        |  |
|--|-------------------------------|---------------------------------------|--|----------------------------|-------------------------------|---|--|------------------------|--|
| ENTER DESCRIPTION<br>EC NO: IPG2014-0351<br>DRW:BBRAUCH 2013/09/26<br>CHKD:APOHL 2013/10/16<br>APPR:CBURGER 2014/01/31 | QUALITY SYMBOLS<br>▽=0<br>◻=0 | GENERAL TOLERANCES (UNLESS SPECIFIED) |  | DIMENSION STYLE<br>MM ONLY |                               | SCALE<br>4:1  | DESIGN UNITS<br>METRIC   | THIRD ANGLE PROJECTION |  |
|  |                               |                                       | mm   | INCH                       | DRAWN BY<br>NSTAUDIGEL        | DATE<br>2010/01/26  | TITLE<br>REC U12 8P AC MA STR PA<br>M16 BM WIR SE SHLD<br>BRA AU |                        |  |
|  |                               | 4 PLACES                              | ± ---  | ± ---                      | CHECKED BY                    | DATE  |  |                        |  |
|  |                               | 3 PLACES                              | ± ---  | ± ---                      | APPROVED BY<br>FPACHER        |   | DATE<br>2010/02/01   |                        |  |
| 2 PLACES   | ± 0.05                        | ± ---                                 | MATERIAL NO.   |                            | DOCUMENT NO.<br>SD-120084-018 | SHEET NO.<br>1 OF 1   |  |                        |  |
| 1 PLACE  | ± 0.1                         | ± ---                                 | DRAFT WHERE APPLICABLE MUST REMAIN WITHIN DIMENSIONS |                            | SIZE<br>A3                    | THIS DRAWING CONTAINS INFORMATION THAT IS PROPRIETARY TO MOLEX INCORPORATED AND SHOULD NOT BE USED WITHOUT WRITTEN PERMISSION |  |                        |  |
| 0 PLACE  | ± 0.2                         | ± ---                                 |  |                            |                               |   |  |                        |  |

9 8 7 6 5 4 3 2 1