



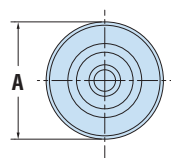
Heyco® Rubber Push-In Bumpers

- Rubber bumpers are designed for through hole installation.
- Designed to fit snugly into your opening and not let air, water, etc. pass through.
- Can also be used as feet.
- For Heyco Adhesive-Backed Bumpers see page 75.
- Part Description Key: RGB X-Y-Z where X = Mounting Hole Diameter (inches), Y = Base Diameter (inches), and Z/32 = Base Height (inches).

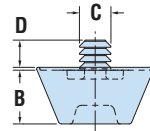
PANEL DIMENSIONS				PART NO.	DESCRIPTION	MATERIAL	PART DIMENSIONS							
Mounting Hole Dia. in. mm.	Maximum Thickness in. mm.		Black				A Base Diameter in. mm.		B Base Height in. mm.		C Insert Diameter in. mm.		D Insert Height in. mm.	
	Type H													
.203	5,2	.078	2,0	G3116	RGB 203-812-6	Santoprene	.81	20,6	.19	4,7				
				G3117	RGB 203-812-8	Santoprene	.81	20,6	.25	6,4	.22	5,6	.20	5,1
				G3118	RGB 203-812-12	Santoprene	.81	20,6	.38	9,5				
Type D														
.218	5,5	.093	2,4	G2016	RGB 218-406-6	SBR	.41	10,4	.19	4,8	.28	7,1	.09	2,3
.250	6,4	.047	1,2	G2020	RGB 250-500-6	SBR	.50	12,7	.17	4,3	.31	7,9	.19	4,8
.312	7,9	.062	1,6	G2035	RGB 312-375-5	SBR	.38	9,7	.16	4,1	.38	9,7	.16	4,1
.328	8,3	.094	2,4	G2039	RGB 328-846-6	SBR	.85	21,5	.19	4,8	.42	10,7	.27	6,9
.500	12,7	.125	3,2	G2043	RGB 500-1000-6	SBR	1.00	25,4	.19	4,8	.63	16,0	.13	3,3
Type T1														
.118	3,0	.098	2,5	G2000	RGB 118-236-4	EPDM	.24	6,1	.12	3,0	.20	5,1	.47	11,9
.177	4,5	.059	1,5	G2006	RGB 177-334-9	EPDM	.33	8,4	.30	7,6	.24	6,1	.73	18,5
.218	5,5	.125	3,2	G2017	RGB 218-875-6	SBR	.88	22,4	.17	4,3	.34	8,7	.58	14,7
Type T2*														
.187	4,7	.047	1,2	G2009	RGB 187-250-6	SBR	.25	6,4	.19	4,7	.23	5,8	.34	8,6

Standard color black.

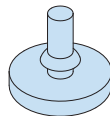
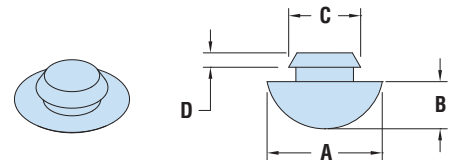
*Designed for pull through applications.



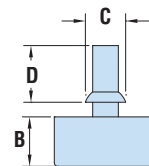
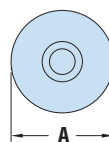
Type H



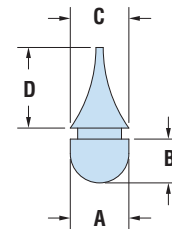
Type D



Type T1



Type T2



Quick
Specs

Material
Temperature Range

TPE, SBR, or EPDM
-40°F (-40°C) to 221°F (105°C)