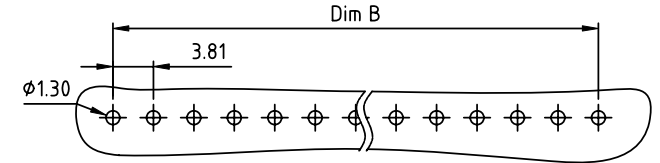
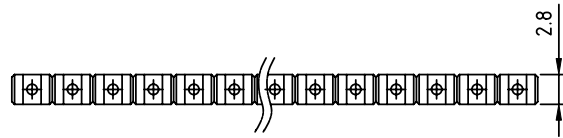
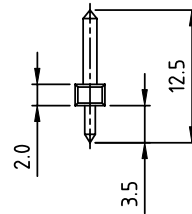
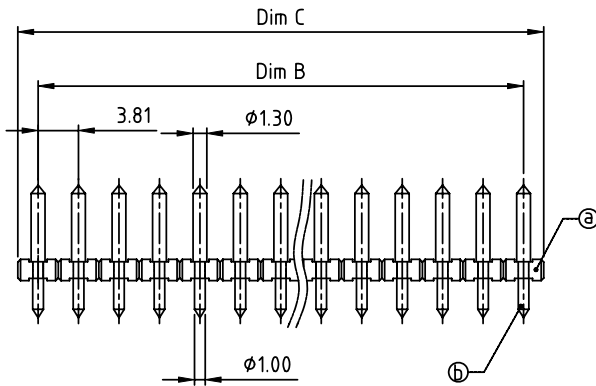


PRODUCT NUMBER	PITCH
OPxx42x000J0G	3.81 mm



RECOMMENDED P.C.B LAYOUT
TOP VIEW



Material:

- Item ① Insulator(housing): Thermoplastic (UL94V-0)
- Item ② Contact pin: Brass, Tin or Au plated.

Electrical:

- Voltage rating: 300V
- Current rating: 10A
- Withstanding Voltage: 1.6KV
- Operating temperature: -40°C to +115°C
- Soldering temperature: 260°C±5°C/5 Sec
- Safety Approval:

DIMENSION

Dim B	(N-1)×3.81
Dim C	N×3.81

N=Number of poles

Poles	Tolerance
2p-5p	±0.10
6p-9p	±0.15
10p-13p	±0.20
14p-17p	±0.25
18p-24p	±0.30

PART NO.: OP xx 42 x 0 00J0 G

Solid block
 No. of poles
 02 2 poles
 03 3 poles
 ...
 24 24 poles

0 Tin plating 120u" Min
 1 Gold plating 10u"
 2 Gold flash

RoHS compliant
 (lead<4%)
 In copper Alloy

mat'l. code		surface ASME Y14.5	tolerance ASME Y14.5	projection 	product family TERMINAL BLOCK
ltr	ecn no	dr	date	tolerances unless otherwise specified	title TERMINAL BLOCK
				angles 	scale PLUGGABLE SOCKET, VERTICAL
				X°±1"	MM
				X.X±0.5	scale
				X.XX±0.3	dwg no
				X.XX±0.1	sheet 1 of 1
				dr EVIN ZHONG 041714	size A4
				enr EVIN ZHONG 041714	type CUSTOMER Drawing
				chr HANKE FENG 041714	
				appd SHI JUN 041714	
sheet index	revision sheet	A	1		