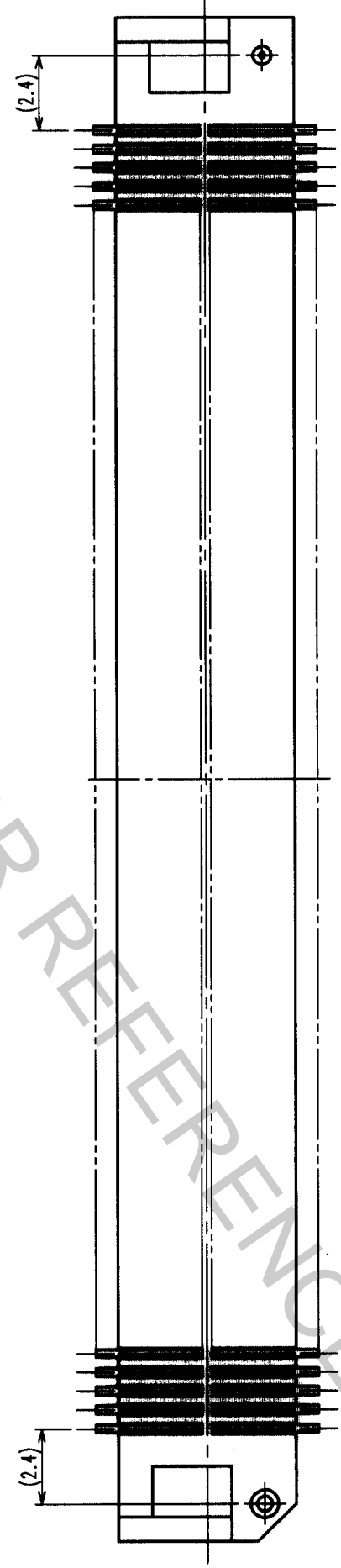
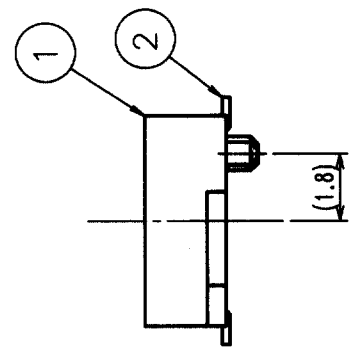
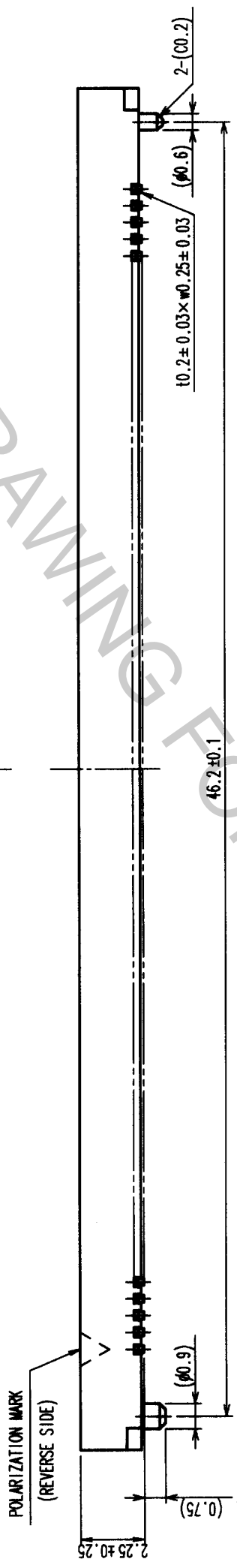
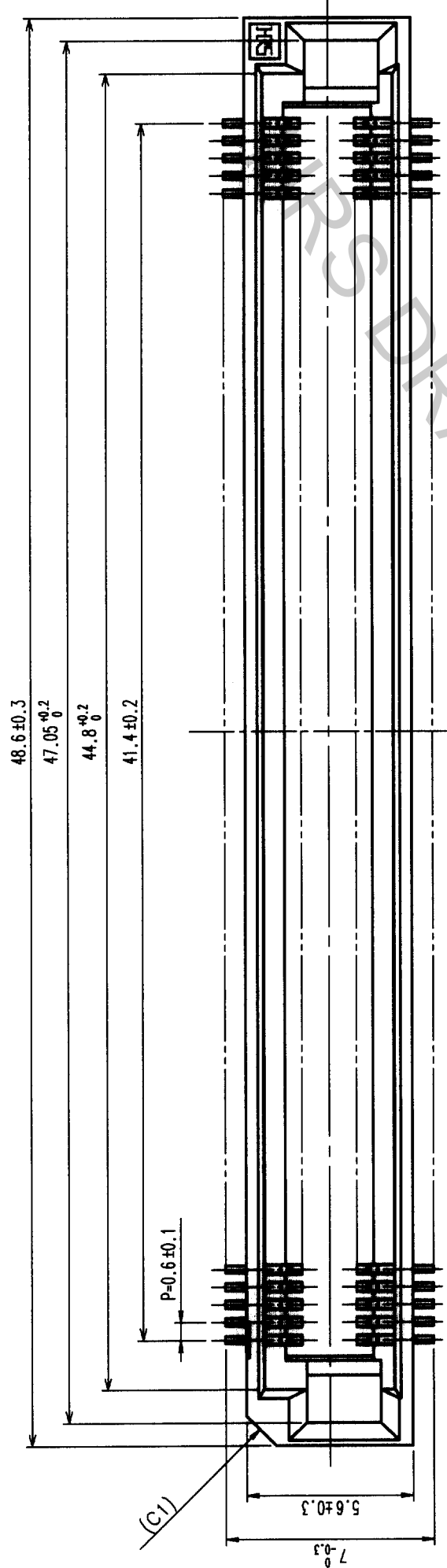
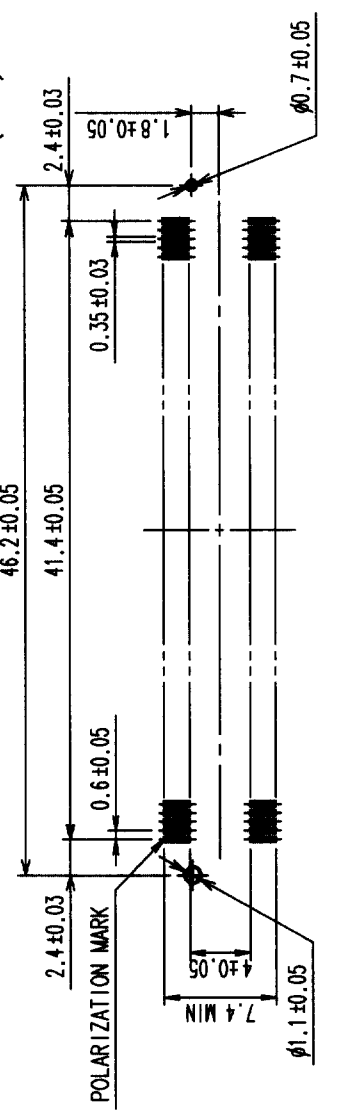


NO.	DESCRIPTION OF REVISIONS	BY	CHKD	DATE	COUNT	DESCRIPTION OF REVISIONS	BY	CHKD	DATE
1									
2									
3									
4									
5									



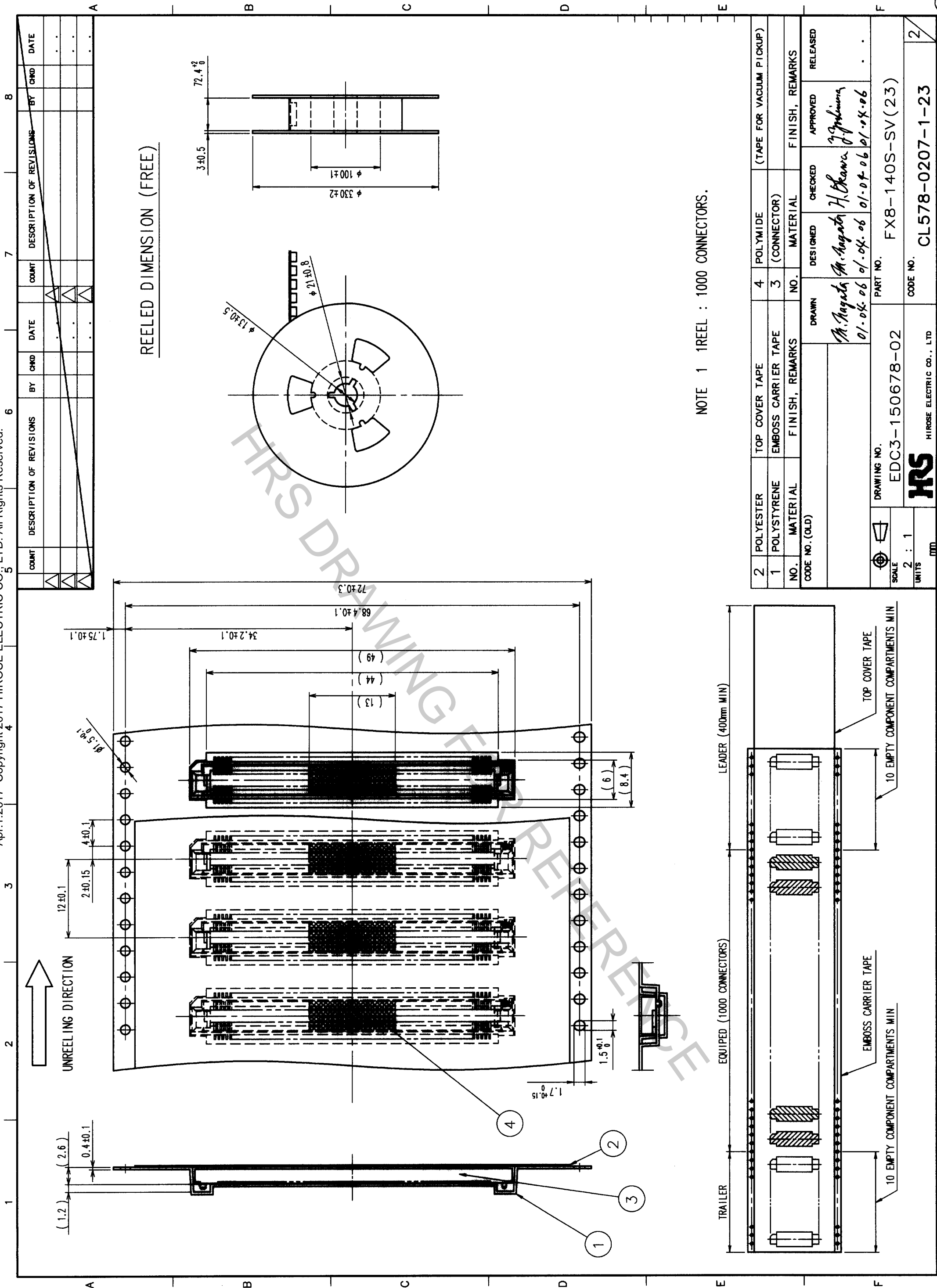
- NOTE
- 1 LEAD CO-PLANARITY SHALL BE 0.1 MAX.
 - 2 EMBOSS CARRIER TAPE PACKAGING SHALL BE APPLIED FOR THIS PRODUCT. SEE SHEET 2/2 FOR DETAILS.
 - 3 THIS PRODUCT HAS TAPE FOR VACUUM PICKUP. SEE NEXT PAGE FOR DETAIL OF STICKING POSITION, ETC.
 - 4 FOR MODIFICATION, ETC., PREVENTIVE HOLE FOR SINK MARK MAY BE ADDED DEPENDS ON CIRCUMSTANCES.

RECOMMENDED LAND PATTERN DIMENSION OF PCB (MOUNTING SIDE)
(2:1)



1	PPS	LIGHT BROWN (UL94V-0)	2	PHOSPHOR BRONZE	CONTACT AREA: GOLD(0.1μm) OVER NICKEL THE OTHER AREA: GOLD(FLASH) OVER NICKEL
NO.	MATERIAL	FINISH, REMARKS	NO.	MATERIAL	FINISH, REMARKS
CODE NO. (OLD)			DRAWN	DESIGNED	CHECKED
			<i>M. Nagata</i>	<i>M. Nagata</i>	<i>H. Okawa</i>
			01-04-06	01-04-06	01-04-06
DRAWING NO.		PART NO.		APPROVED	
EDC3-150678-02		FX8-140S-SV(23)		<i>T. Yoshimura</i>	
SCALE	5:1	CODE NO.		RELEASED	
UNITS	mm	CL578-0207-1-23			

TO	
PCK	

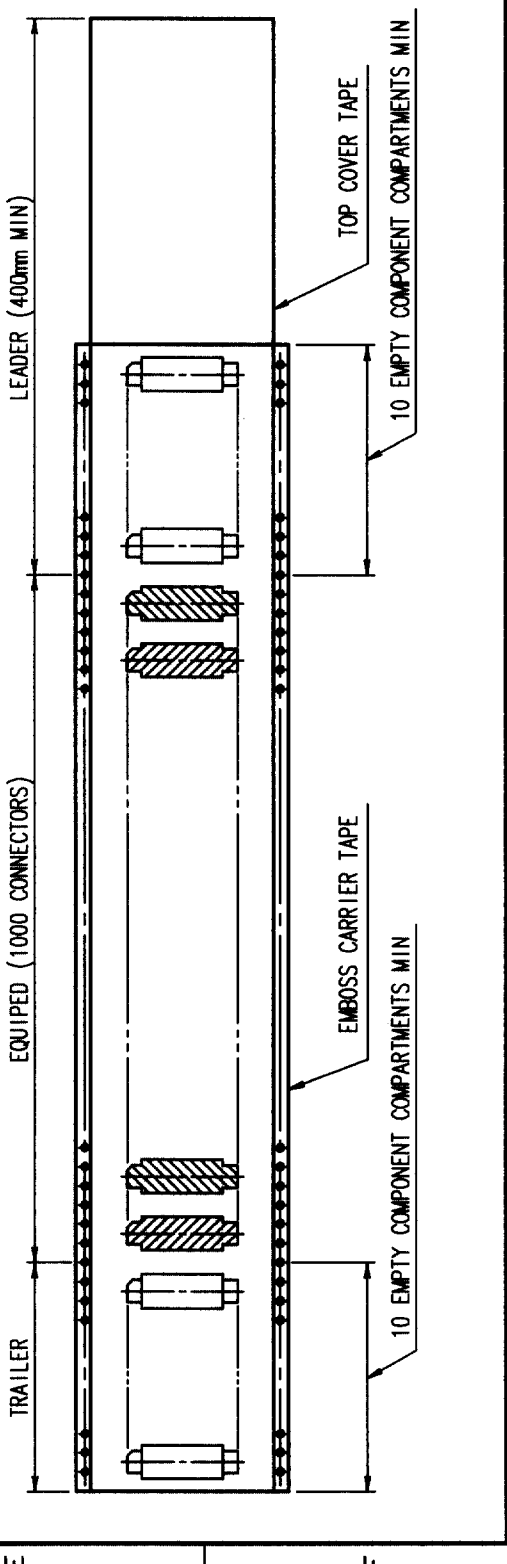


REELED DIMENSION (FREE)

NOTE 1 1 REEL : 1000 CONNECTORS.

COUNT	DESCRIPTION OF REVISIONS	BY	CHKD	DATE	COUNT	DESCRIPTION OF REVISIONS	BY	CHKD	DATE

2	POLYESTER	TOP COVER TAPE	4	POLYIMIDE	(TAPE FOR VACUUM PICKUP)		
1	POLYSTYRENE	EMBOSS CARRIER TAPE	3	(CONNECTOR)			
NO.	MATERIAL	FINISH, REMARKS	NO.	MATERIAL	FINISH, REMARKS		
CODE NO. (OLD)		DRAWN		DESIGNED	CHECKED	APPROVED	RELEASED
		M. Nagata		M. Nagata	H. Okawa	T. Yoshimura	
		01-04-06		01-04-06	01-04-06	01-04-06	
DRAWING NO.		PART NO.					
EDC3-150678-02		FX8-140S-SV(23)					
SCALE		UNITS					
2 : 1		MM					
				CODE NO.			
				CL578-0207-1-23		2	



TO	
PCK	