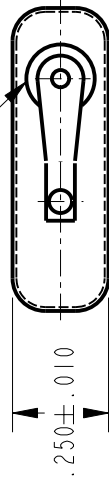


WOBBLEFRAM ACTUATOR SEAL



10HM1-2
CATALOG LISTING
PAGE 1 OF 1

REPLACES

RELEASE NO. PR-21258

ISSUE
3



CHECK

REVISIONS

A 0095427
TSM
3AUG69

CHECK

02AUG69

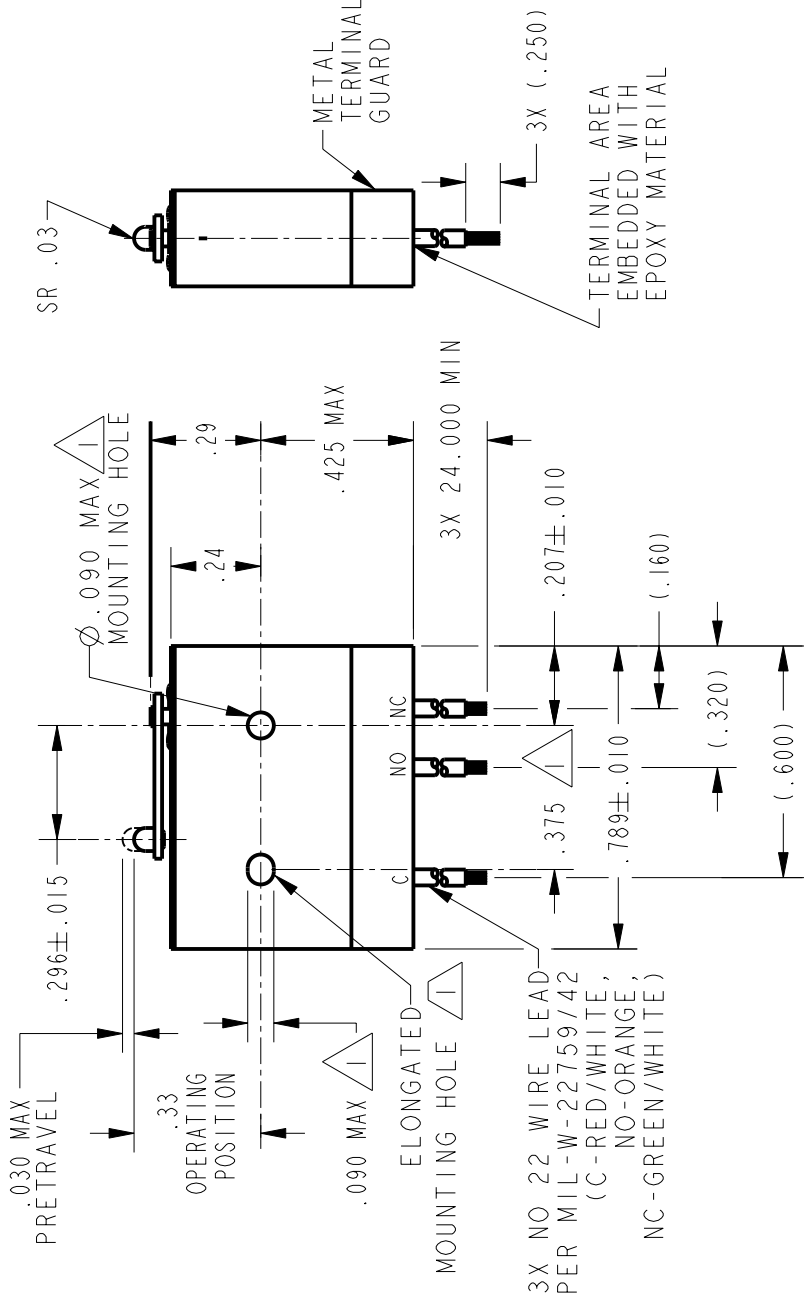
CHECK

JAF

CHECK

02AUG69

PTC/CAD 2D
DRAWN



NOTES

- 1 - MOUNTING HOLES WILL ACCEPT PINS OR SCREWS OF $\phi .087$ MAX ON $.375 \pm .002$ CENTERS FOR USE IN TEMPERATURE RANGE -85°F TO $+250^{\circ}\text{F}$ (DOWN TO -300°F)
- 2 - IF WIRE LEADS ARE NOT FLEXED)
- 3 - HERMETICALLY SEALED (METAL-TO-METAL, GLASS-TO-METAL)
- 4 - ALL EXPOSED PARTS ARE OF CORROSION RESISTANT MATERIALS
- 5 - WEIGHT OF SWITCH ONLY IS 0.22 OZ MAX, WEIGHT OF CONDUCTOR GROUP ONLY IS 0.20 OZ MAX PER FOOT
- 6 - DO NOT APPLY MORE THAN 1 1/2 INCH-LBS OF TORQUE WHEN TIGHTENING MOUNTING SCREWS
- 7 - 24K GOLD MOVABLE CONTACT
- 8 - GOLD ALLOY STATIONARY CONTACTS

ANSI Y14.5M-1982 APPLIES

THIS DRAWING COVERS A PROPRIETARY ITEM AND IS THE PROPERTY OF MICRO SWITCH. A DIVISION OF HONEYWELL. THIS DRAWING IS NOT TO BE COPIED OR USED WITHOUT THE APPROVAL OF MICRO SWITCH.

THIRD ANGLE PROJECTION	DO NOT SCALE PRINT
SCALE 2 : 1	UNLESS OTHERWISE SPECIFIED TOLERANCES ARE
	ONE PLACE (.0)
	TWO PLACE (.00)
	THREE PLACE (.000)
	ANGLES
	WEIGHT

CHARACTERISTICS	ELECTRICAL DATA
OPERATING FORCE ----- 7 OZ MAX	CONTACT ARRANGEMENT S P D T
RELEASE FORCE ----- 1 OZ MIN	28 VOLTS DC RATING
DIFFERENTIAL TRAVEL ----- .006 MAX	INDUCTIVE -- SEA LEVEL - 1/4 AMP
OVERTRAVEL ----- .003 MIN	70,000 FT - 1/4 AMP
	RESISTIVE -- SEA LEVEL - 1/2 AMP
	70,000 FT - 1/2 AMP