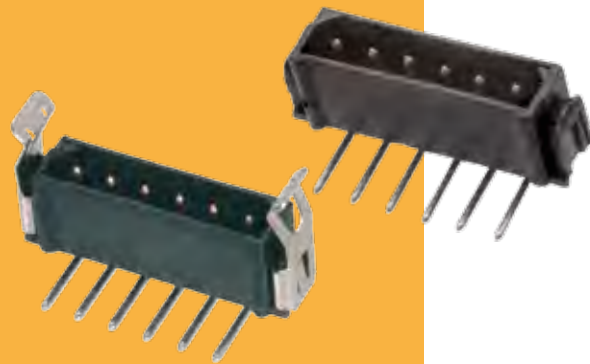


Datamate L-Tek Connectors

Male Single Row Horizontal PC Tail

- Polarised mouldings.
- Fully shrouded contacts.
- Mates with standard Datamate L-Tek female connectors.
- Supplied with two Strain Relief straps per connector; spares available under **order code M80-0030006**.



NO LATCHES		CALCULATION		Recommended PC Board Pattern	STRAIN RELIEF STRAP																
		A	$B + 5.6$			<p>View of Strain Relief strap in place</p>															
		B	$(\text{Total no. of contacts} - 1) \times 2$																		
LOCKING LATCH		CALCULATION		FRICTION LATCH																	
		A	$B + 6.1$																		
		B	$(\text{Total no. of contacts} - 1) \times 2$																		
HOW TO ORDER																					
SERIES CODE			M80 - XXX XX XX		FINISH																
<table border="1"> <thead> <tr> <th>3mm TAIL</th> <th>4.5mm TAIL</th> <th></th> </tr> </thead> <tbody> <tr> <td>843</td> <td>793</td> <td>No Latches</td> </tr> <tr> <td>842</td> <td>792</td> <td>Locking Latch</td> </tr> <tr> <td>846</td> <td>796</td> <td>Friction Latch</td> </tr> </tbody> </table>		3mm TAIL	4.5mm TAIL		843	793	No Latches	842	792	Locking Latch	846	796	Friction Latch			<table border="1"> <tbody> <tr> <td>42</td> <td>Gold + Tin</td> </tr> <tr> <td>45</td> <td>Gold</td> </tr> </tbody> </table>		42	Gold + Tin	45	Gold
3mm TAIL	4.5mm TAIL																				
843	793	No Latches																			
842	792	Locking Latch																			
846	796	Friction Latch																			
42	Gold + Tin																				
45	Gold																				
					TOTAL NO. OF CONTACTS 02 to 07, 17, 22																

All dimensions in mm.