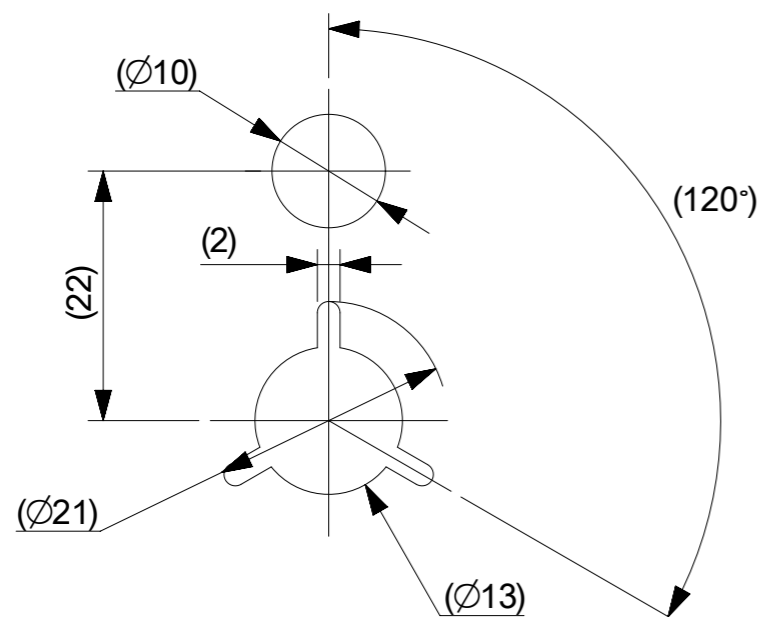
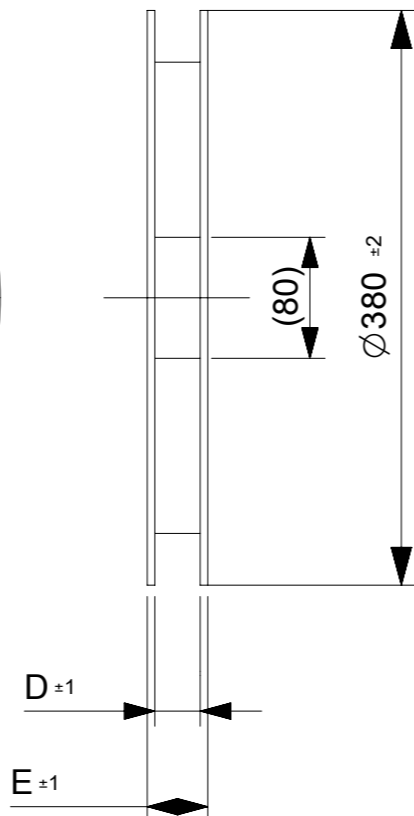
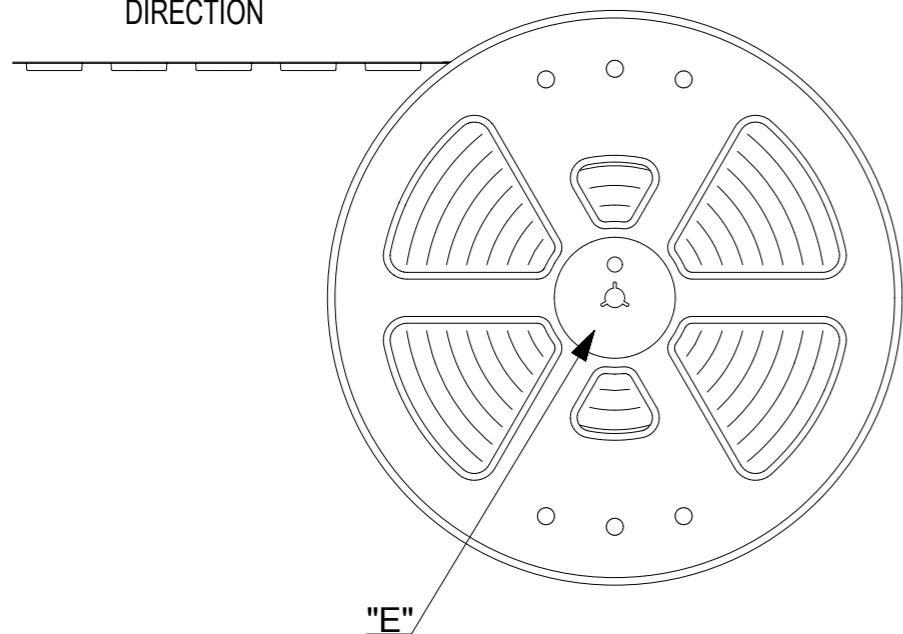


引き出し方向

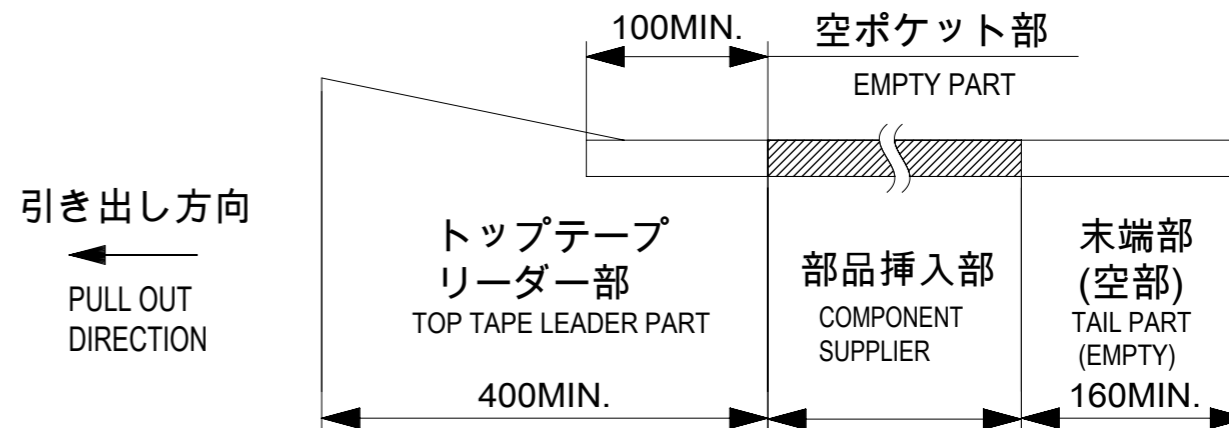
PULL OUT  
DIRECTION



DETAIL "E"

NOTES

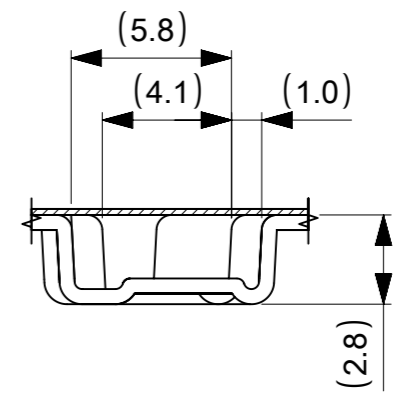
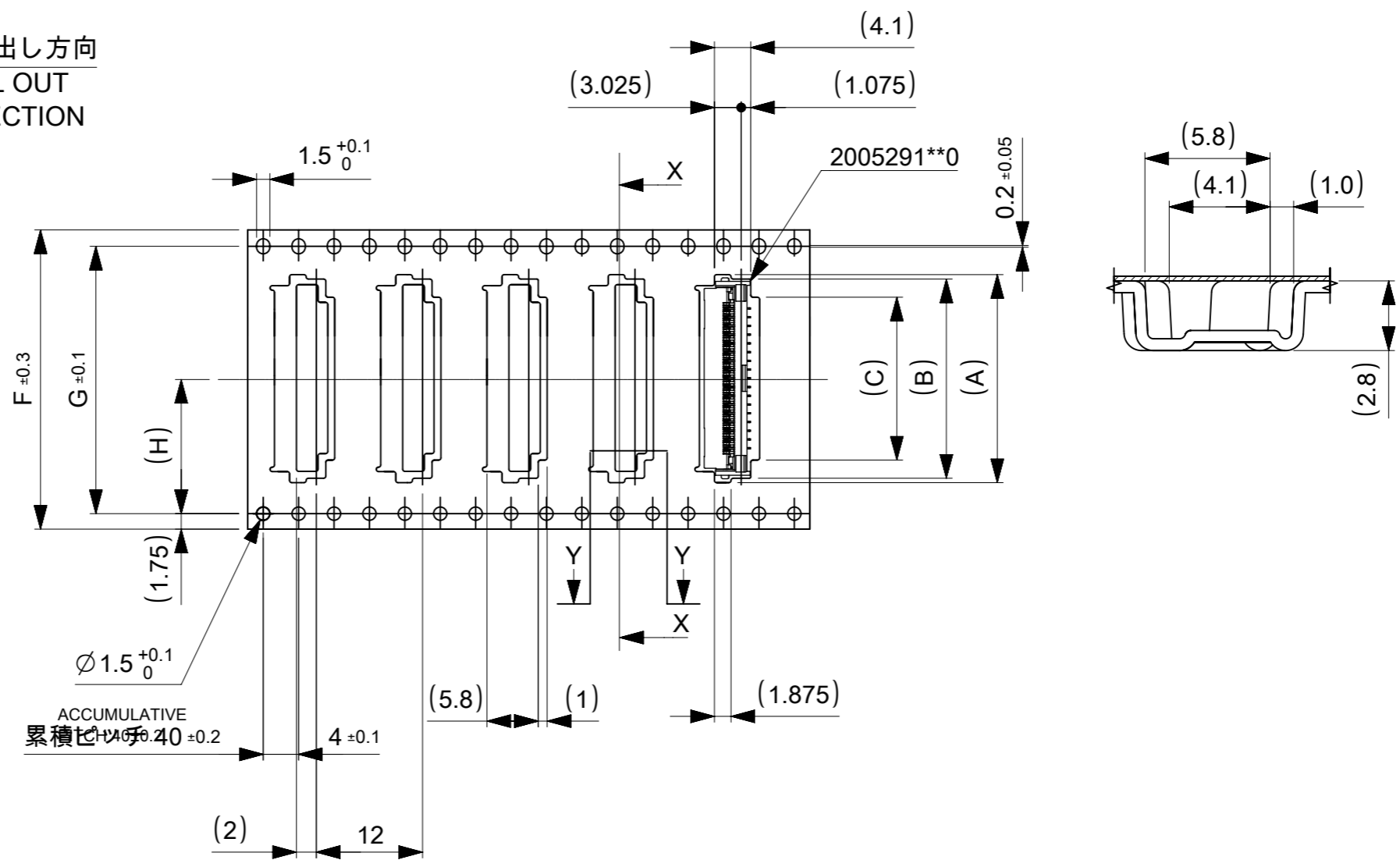
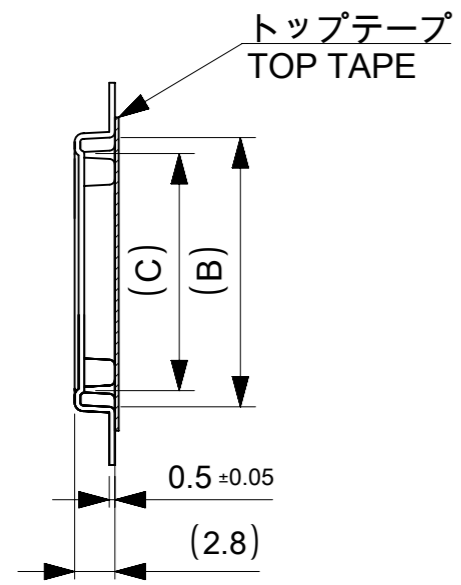
- 梱包数量 : 3000個 / リール  
NUMBER OF CONNECTORS : 3000 PCS/REEL.
- リードテープ長さ  
LEAD TAPE LENGTH



- カバーテープの剥離強度については、IEC60286-3に準拠。  
COVER TAPE PEEL FORCE IS DEFINED BY IEC 60286-3.
- 製品詳細寸法については、図面 2005291006-000を参照下さい。  
FOR DIMENTIONS OF PRODUCT, REFER TO 2005291006-000.
- 材料 MATERIAL  
キャリアテープ : ポリスチレン  
CARRIER TAPE : POLYSTYRENE  
トップテープ : ポリエチレンテレフタレート、ポリエチレン  
TOP TAPE : POLYETHYLENE TEREPHTHALATE, POLYETHYLENE  
リール :ポリスチレン<リサイクル材を含む>
- ELV及びRoHS適合品 ELV AND RoHS COMPLIANT.

THIS DRAWING CONTAINS INFORMATION THAT IS PROPRIETARY TO MOLEX ELECTRONIC TECHNOLOGIES, LLC AND SHOULD NOT BE USED WITHOUT WRITTEN PERMISSION									
DIMENSION UNITS	SCALE	CURRENT REV DESC:					<b>molex</b>		
mm	2:1								
GENERAL TOLERANCES (UNLESS SPECIFIED)							1.0 FPC ZIF BTM CONT EMBT PKG		
ANGULAR TOL ± 1.0 °							PRODUCT CUSTOMER DRAWING		
4 PLACES ± 0.05	EC NO: 698599						DOCUMENT NUMBER		
3 PLACES ± 0.1	DRWN: KYHWANG						2005290006		
2 PLACES ± 0.2	CHK'D: SHOSHIKAWA						DOC TYPE		
1 PLACE ± 0.2	APPR: SHOSHIKAWA						PSD		
0 PLACES ± 0.2	INITIAL REVISION:						DOC PART		
	DRWN: MTAKAHASHI04						000		
	APPR: YNOGAWA						REVISION		
							C		
DRAFT WHERE APPLICABLE MUST REMAIN WITHIN DIMENSIONS	THIRD ANGLE PROJECTION	DRAWING	SERIES	MATERIAL NUMBER	CUSTOMER	SHEET NUMBER			
		A3-SIZE	200529	SEE CHART	GENERAL	1 OF 2			

引き出し方向  
PULL OUT  
DIRECTION

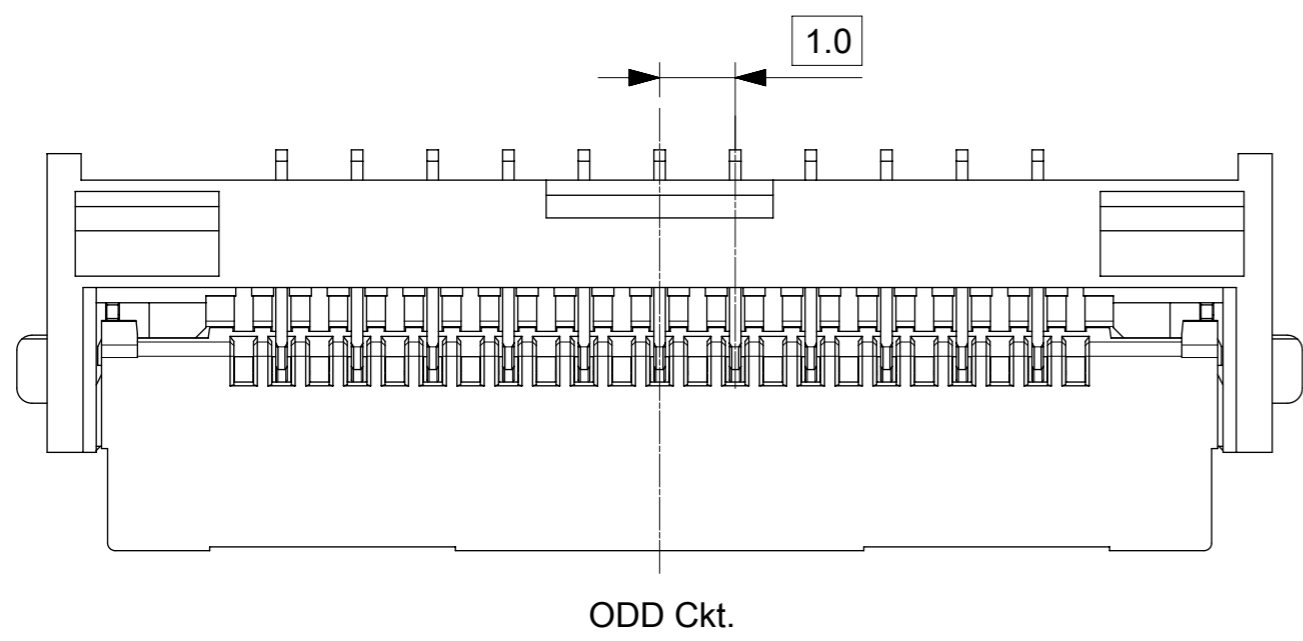
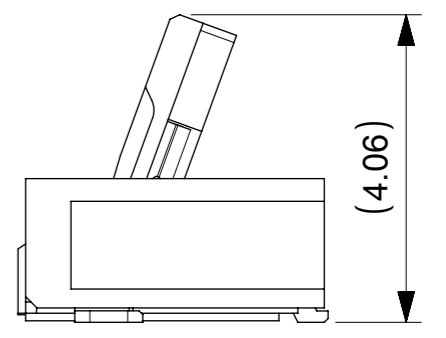
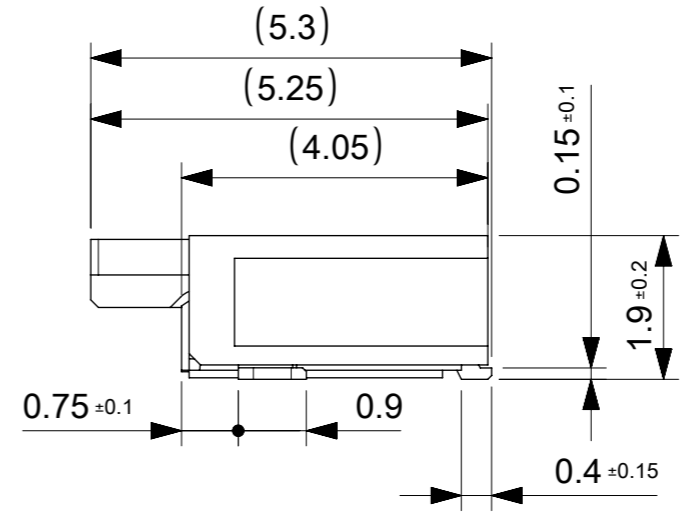
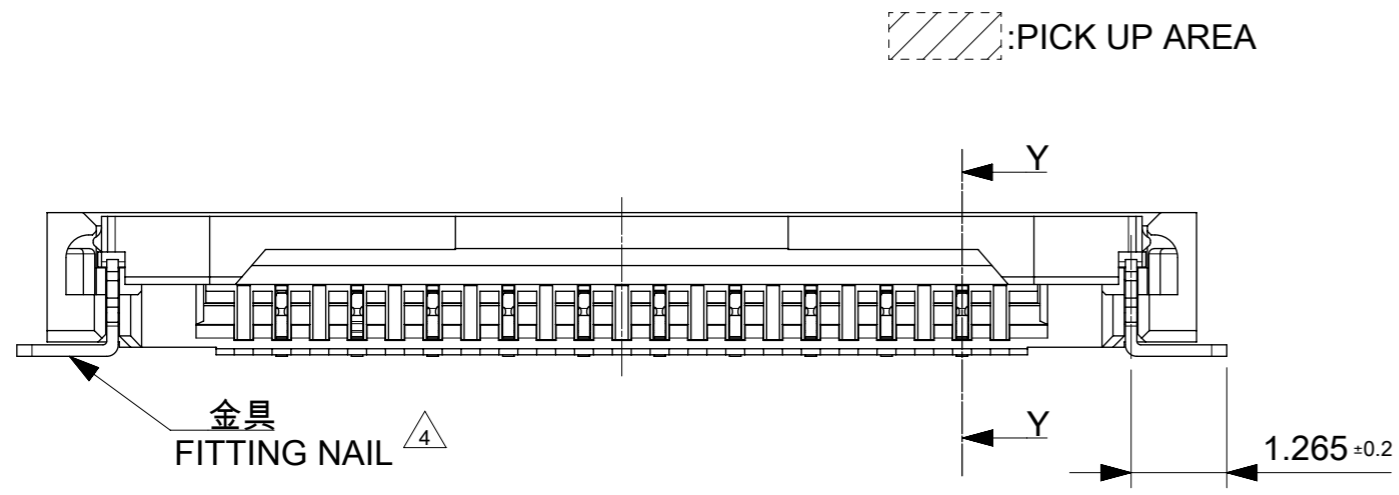
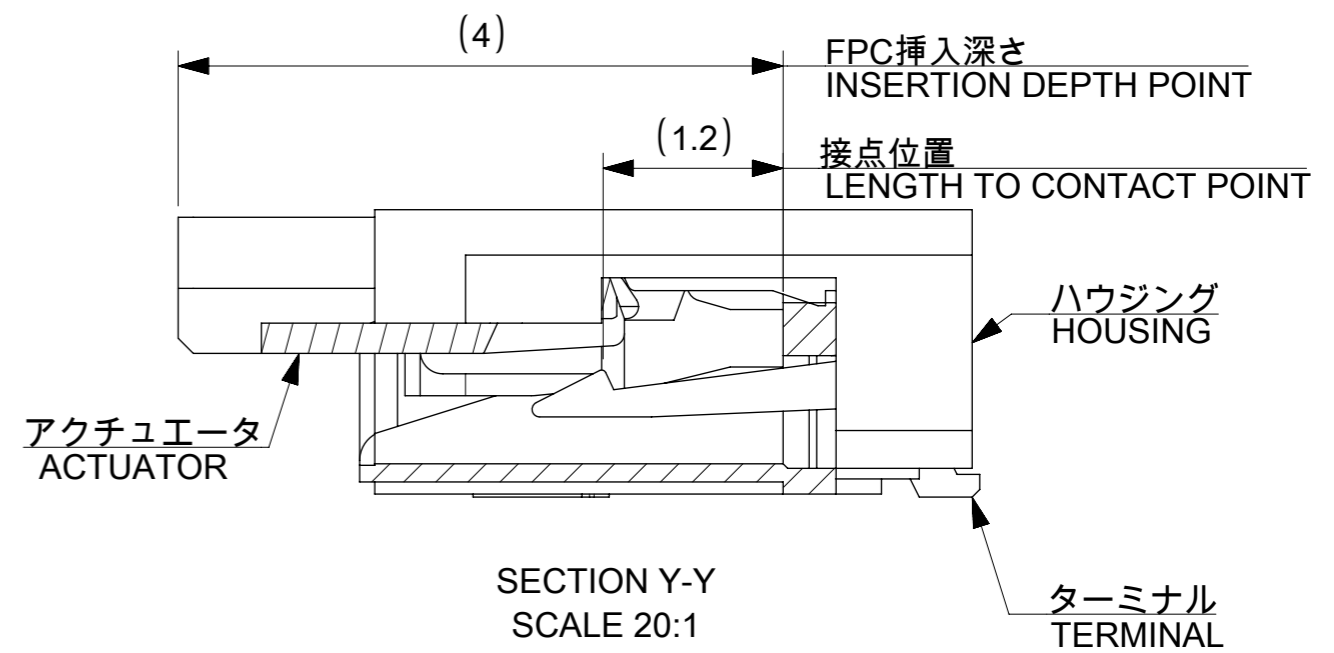
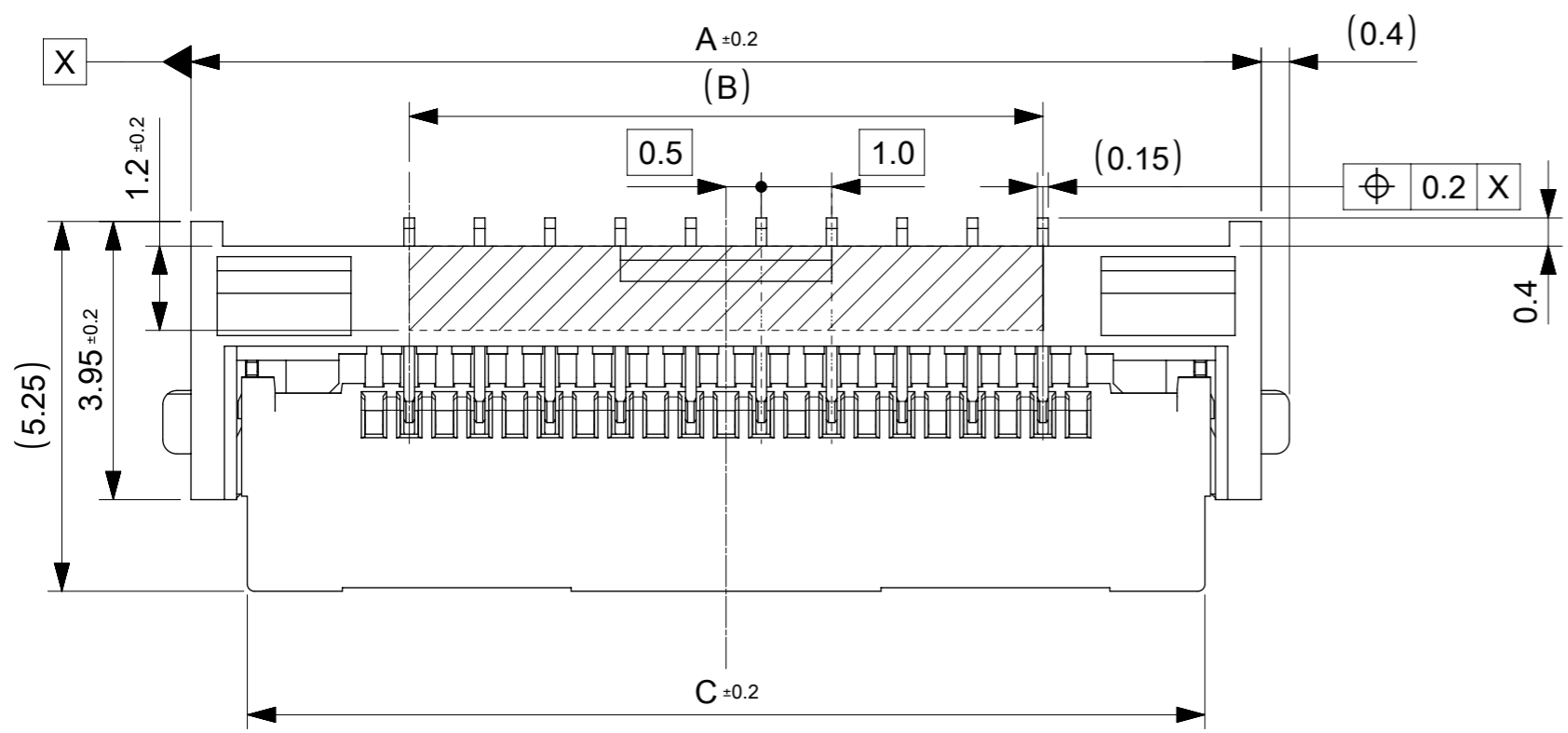


ACCUMULATIVE  
累積公差 ±0.40 ±0.2

20.2	40.4	44	49.4	45.4	23.4	27.4	28.5	2005290220	22
					18.4	22.4	23.5	2005290170	17
14.2	28.4	32	37.4	33.4	13.4	17.4	18.5	2005290120	12
H	G	F	E	D	C	B	A	EMBOSSED PACKGE	Ckt
								オーダー番号 ORDER NO.	

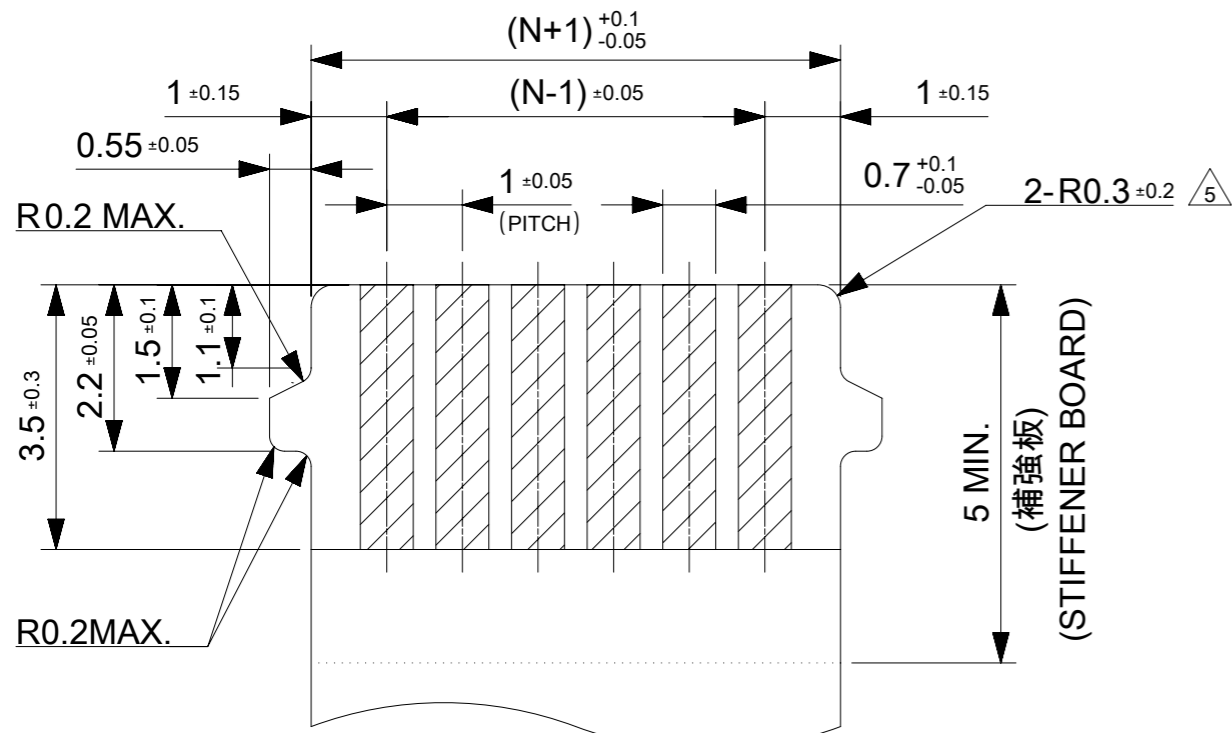
CONNECTOR SERIES NO. 2005291\*\*0

THIS DRAWING CONTAINS INFORMATION THAT IS PROPRIETARY TO MOLEX ELECTRONIC TECHNOLOGIES, LLC AND SHOULD NOT BE USED WITHOUT WRITTEN PERMISSION											
DIMENSION UNITS mm		SCALE 2:1		CURRENT REV DESC:						<b>molex</b>	
GENERAL TOLERANCES (UNLESS SPECIFIED)				EC NO: 698599 DRWN: KYHWANG 2022/01/28 CHK'D: SHOSHIKAWA 2022/03/11 APPR: SHOSHIKAWA 2022/03/11							
ANGULAR TOL ± 1.0 °				PRODUCT CUSTOMER DRAWING						DOCUMENT NUMBER	
4 PLACES ± 0.05				INITIAL REVISION:						DOC TYPE	
3 PLACES ± 0.1				DRWN: MTAKAHASHI04 2015/12/24						DOC PART	
2 PLACES ± 0.2				APPR: YNOGAWA 2016/01/04						REVISION	
1 PLACE ± 0.2				MATERIAL NUMBER						SHEET NUMBER	
0 PLACES ± 0.2				CUSTOMER						2 OF 2	
DRAFT WHERE APPLICABLE MUST REMAIN WITHIN DIMENSIONS				THIRD ANGLE PROJECTION		DRAWING		SERIES		MATERIAL NUMBER	
				A3-SIZE		200529		SEE CHART		GENERAL	

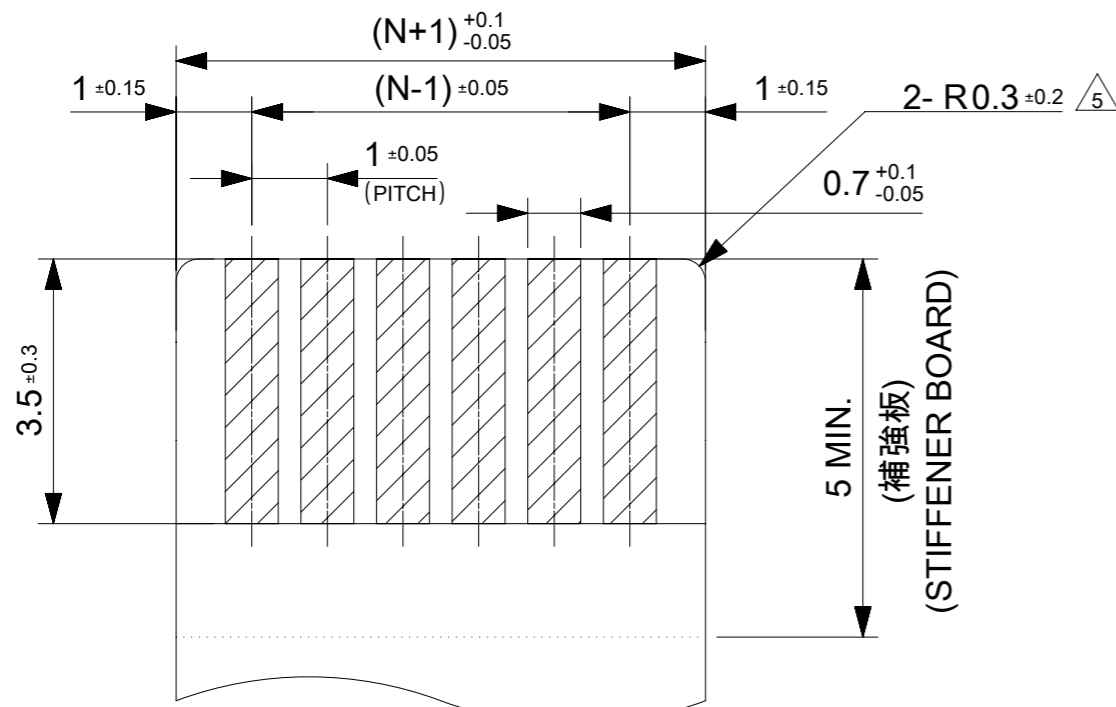


25.6	21	27.2	2005290220	22
20.6	16	22.2	2005290170	17
15.6	11	17.2	2005290120	12
C	B	A	EMBOSSED PACKAGE	Ckt
			オーダー番号 ORDER NO.	
CONNECTOR SERIES NO. 2005291**0				

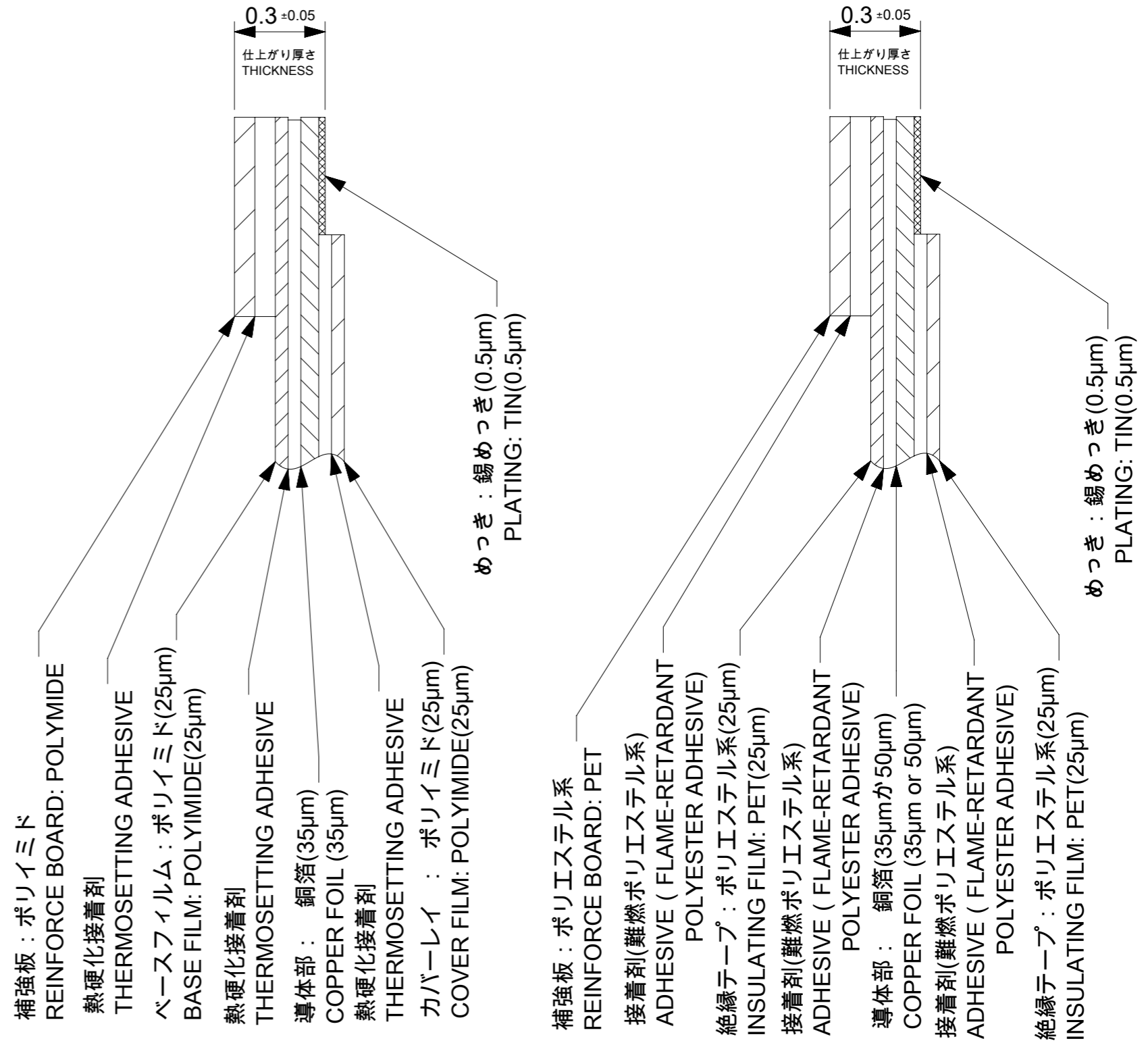
THIS DRAWING CONTAINS INFORMATION THAT IS PROPRIETARY TO MOLEX ELECTRONIC TECHNOLOGIES, LLC AND SHOULD NOT BE USED WITHOUT WRITTEN PERMISSION				
DIMENSION UNITS	SCALE	CURRENT REV DESC:		
mm	10:1			
GENERAL TOLERANCES (UNLESS SPECIFIED)				
ANGULAR TOL	± 1.0 °			
4 PLACES	± 0.05	EC NO: 698599		
3 PLACES	± 0.1	DRWN: KYHWANG	2022/01/28	
2 PLACES	± 0.2	CHK'D: SHOSHIKAWA	2022/03/11	
1 PLACE	± 0.2	APPR: SHOSHIKAWA	2022/03/11	
0 PLACES	± 0.2	INITIAL REVISION:		
DRAFT WHERE APPLICABLE MUST REMAIN WITHIN DIMENSIONS		DRWN: MTAKAHASHI04	2015/12/24	
THIRD ANGLE PROJECTION		APPR: YNOGAWA	2016/01/04	
DRAWING		SERIES	MATERIAL NUMBER	CUSTOMER
A3-SIZE		200529	SEE CHART	GENERAL
SHEET NUMBER		1 OF 3		



適合FPC/FFC推奨寸法  
APPLICABLE FPC/FFC  
RECOMMENDED DIMENSION



耳無し適合FPC/FFC推奨寸法  
APPLICABLE NON-TAB FPC/FFC  
RECOMMENDED DIMENSION



FPC構成推奨仕様  
STRUCTURE OF FPC

FFC構成推奨仕様  
STRUCTURE OF FFC

THIS DRAWING CONTAINS INFORMATION THAT IS PROPRIETARY TO MOLEX ELECTRONIC TECHNOLOGIES, LLC AND SHOULD NOT BE USED WITHOUT WRITTEN PERMISSION									
DIMENSION UNITS		SCALE		CURRENT REV DESC:					
mm		#							
GENERAL TOLERANCES (UNLESS SPECIFIED)									
ANGULAR TOL ± 1.0°									
4 PLACES		± 0.05		EC NO: 698599		2022/01/28		1.0 FPC ZIF BTM CONT HSG ASSY	
3 PLACES		± 0.1		DRWN: KYHWANG		2022/03/11			
2 PLACES		± 0.2		CHK'D: SHOSHIKAWA		2022/03/11		PRODUCT CUSTOMER DRAWING	
1 PLACE		± 0.2		APPR: SHOSHIKAWA		2022/03/11			
0 PLACES		± 0.2		INITIAL REVISION:				DOCUMENT NUMBER	
DRAFT WHERE APPLICABLE MUST REMAIN WITHIN DIMENSIONS		THIRD ANGLE PROJECTION		DRWN: MTAKAHASHI04		2015/12/24		2005291006	
				APPR: YNOGAWA		2016/01/04		DOC TYPE	
								PSD	
								DOC PART	
								000	
								REVISION	
								E	
				DRAWING		SERIES		MATERIAL NUMBER	
				A3-SIZE		200529		CUSTOMER	
								GENERAL	
								SHEET NUMBER	
								2 OF 3	

注記 NOTES

1.使用材料 MATERIAL

ハウジング :液晶ポリマー ガラス充填、UL94V-0(ベージュ)  
 HOUSING LIQUID CRYSTAL POLYMER  
 GLASS FILLED, UL94V-0(BEIGE)  
 アクチュエータ :ポリアミド ガラス充填、UL94V-0(黒)  
 ACTUATOR POLYAMIDE GLASS FILLED, UL94V-0(BLACK)  
 ターミナル :リン青銅(t=0.15)  
 TERMINAL PHOSPHOR BRONZE  
 金具 :リン青銅(t=0.15)  
 FITTING NAIL PHOSPHOR BRONZE

2.めっき仕様 PLATING

ターミナル TERMINAL  
 錫銀ビスマスめっき (1.0μm以上)  
 下地:ニッケルめっき (1.0μm以上)  
 TINSILVER BISMUTH PLATING  
 (1.0 MICROMETER MINIMUM)  
 UNDERPLATE : NICKEL OVERALL  
 (1.0 MICROMETER MINIMUM)  
 金具 FITTING NAIL  
 錫めっき(1.0μm以上)  
 下地:ニッケルめっき (1.0μm以上)  
 TIN PLATING (1.0 MICROMETER MIN.)  
 UNDER PLATING : NICKEL PLATING  
 (1.0 MICROMETER MIN.)

3.エンボステーブ梱包時は、アクチュエータが閉じた状態とする。  
 IN THE PACKAGE, ACTUATOR OF PART SHOULD BE CLOSED.

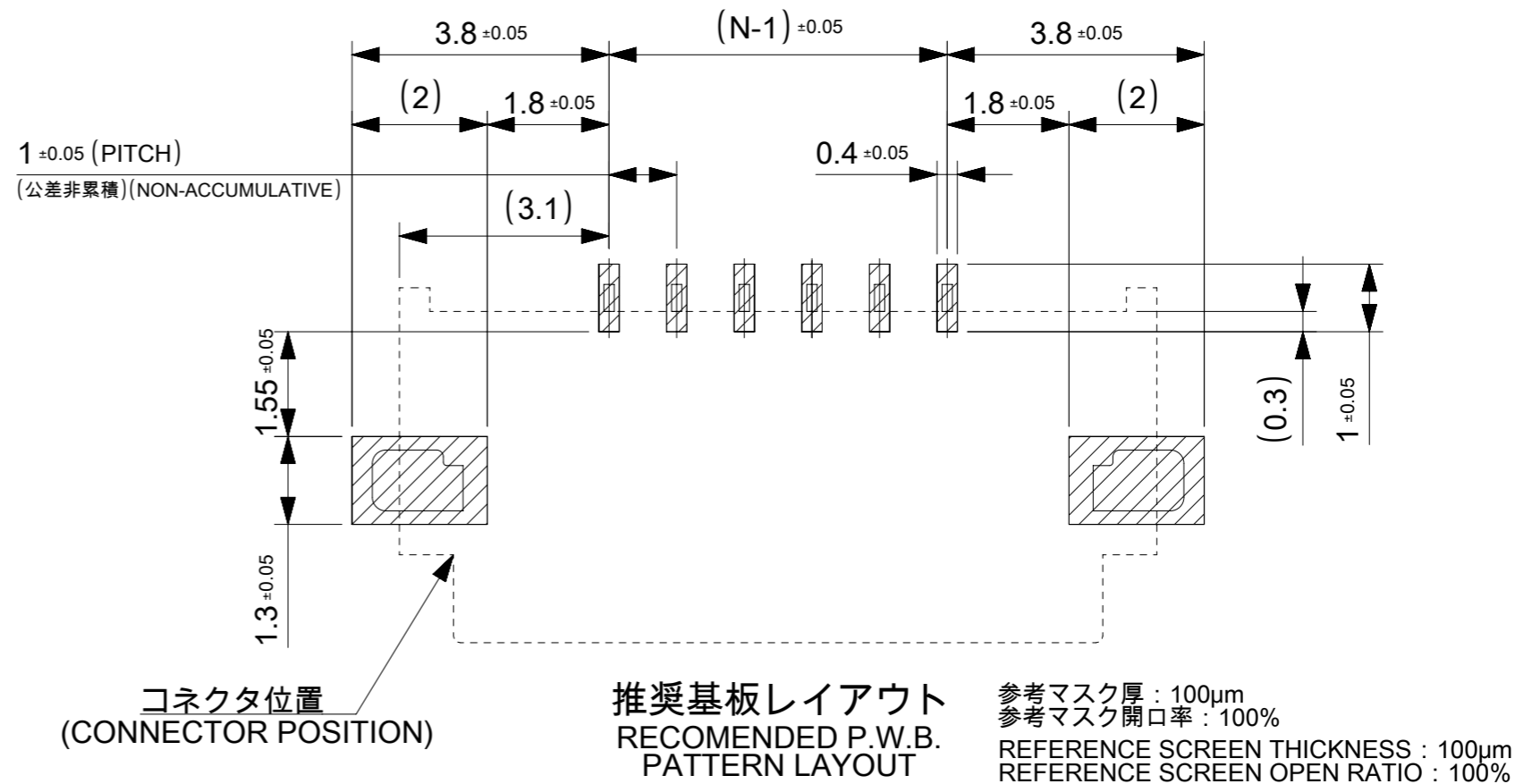
4. パターン剥離止め用金具  
 FITTING NAIL FOR PREVENTION OF PEELING OF P.C.B. PATTERN.

5. R0.3はFPC/FFC導体部にかからないこと。  
 R0.3 MUST NOT BE OVERLAPPED TO PATTERN OF FPC/FFC.

6.N:極数 N:CIRCUIT.

7.ELV及びRoHS適合品  
 ELV AND RoHS COMPLIANT

8.テールと金具を併せた平坦度は0.1以下とする。  
 TAILS AND NAILS COPLANALITY TO BE 0.1 MAX.



FPC/FFCについて ABOUT FPC/FFC

打ち抜き方向は導体側から補強板側を推奨します。  
 導体部については軟箔銅35μmまたは50μmを推奨します。  
 FFCに規定された定格温度がFFC単体前提である場合が御座います。  
 コネクタと組み合わせての実使用において、接着層が劣化するなどの信頼性を満足できないケースを回避するため、  
 実機での評価/確認をお願いいたします。

RECOMMENDED PUNCHING DIRECTION : FROM CONDUCTOR SIDE TO STIFFENER SIDE  
 RECOMMENDED CONDUCTOR SPEC : SOFT COPPER FOIL  
 RECOMMENDED CONDUCTOR THICKNESS : 35 MICROMETER OR 50 MICROMETER  
 WHEN ACTUALLY USING IT WITH CONNECTOR, PLEASE DO THE EVALUATION AND THE CONFIRMATION WITH AN ACTUAL EQUIPMENT TO EVADE THE CASE WHERE RELIABILITY CANNOT BE FILLED (THE ADHESIVE LINE OF FFC IS DETERIORATED ETC.)

FPCについて ABOUT FPC

補強フィルム材質はポリイミドを推奨します。ベースフィルムは25μmを推奨します。  
 接着剤は熱硬化接着剤を推奨します。  
 尚、接着剤の接点部への付着は導通不良の原因になりますので、染み出しが無い様お願い致します。  
 RECOMMENDED MATERIAL/THICKNESS.  
 RECOMMENDED STIFFENER MATERIAL: POLYIMIDE  
 RECOMMENDED BASE FILM THICKNESS: 25 MICROMETER  
 RECOMMENDED ADHESIVE: THERMOSETTING ADHESIVE  
 PLEASE PUT APPROPRIATE AMOUNT OF ADHESIVE ON ADHEREND BECAUSE THERE IS A POSSIBILITY THAT THE EXTRA ADHESIVE CAUSES THE DEFECT IN ELECTRICAL CONTINUITY.  
 THERE IS A POSSIBILITY THAT THE PRESCRIPT TEMPERATURE OF FFC IS SET TO SINGLE IT.

THIS DRAWING CONTAINS INFORMATION THAT IS PROPRIETARY TO MOLEX ELECTRONIC TECHNOLOGIES, LLC AND SHOULD NOT BE USED WITHOUT WRITTEN PERMISSION									
DIMENSION UNITS		SCALE		CURRENT REV DESC:				<b>molex</b>	
mm		±±							
GENERAL TOLERANCES (UNLESS SPECIFIED)									
ANGULAR TOL ± 1.0 °									
4 PLACES		± 0.05		EC NO: 698599		2022/01/28		1.0 FPC ZIF BTM CONT HSG ASSY	
3 PLACES		± 0.1		DRWN: KYHWANG		2022/03/11			
2 PLACES		± 0.2		CHK'D: SHOSHIKAWA		2022/03/11			
1 PLACE		± 0.2		APPR: SHOSHIKAWA		2022/03/11		PRODUCT CUSTOMER DRAWING	
0 PLACES		± 0.2		INITIAL REVISION:		DOCUMENT NUMBER		DOC TYPE	
				DRWN: MTAKAHASHI04		2015/12/24		2005291006	
				APPR: YNOGAWA		2016/01/04		PSD 000 E	
DRAFT WHERE APPLICABLE MUST REMAIN WITHIN DIMENSIONS		THIRD ANGLE PROJECTION		DRAWING		SERIES		MATERIAL NUMBER	
		⊕		A3-SIZE		200529		SEE SHEET 1	
								CUSTOMER	
								GENERAL	
								SHEET NUMBER	
								3 OF 3	