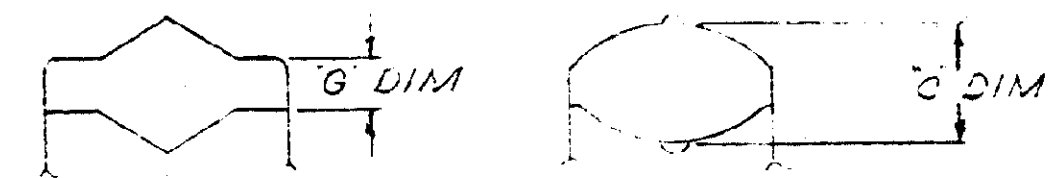
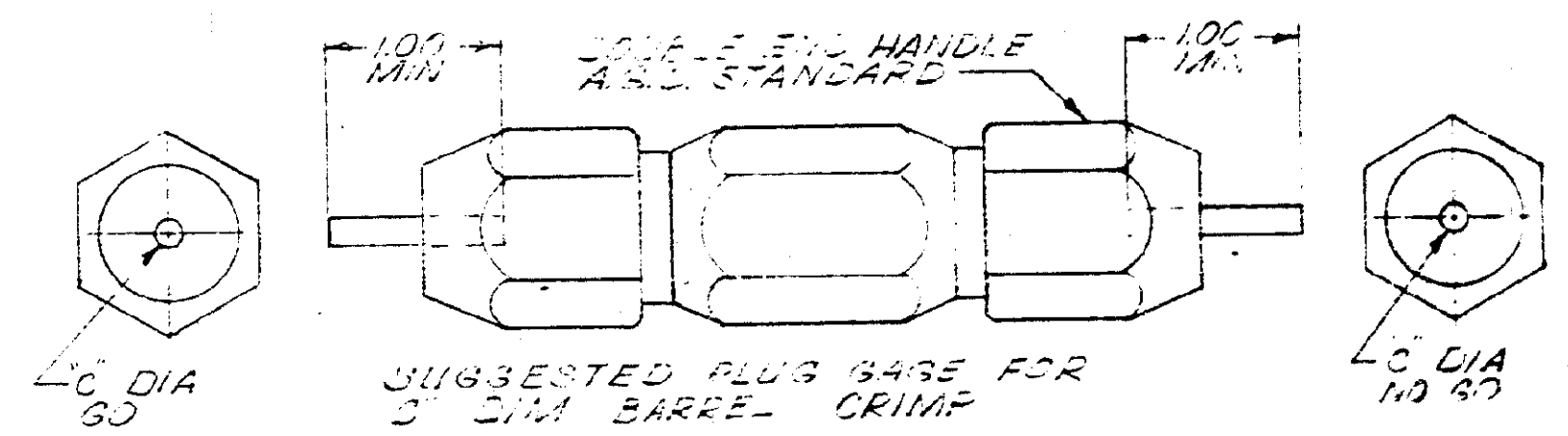


PLUG GAGE DIMENSIONS APPLY WHEN TOOL IS BOTTOMED BUT NOT UNDER PRESSURE.

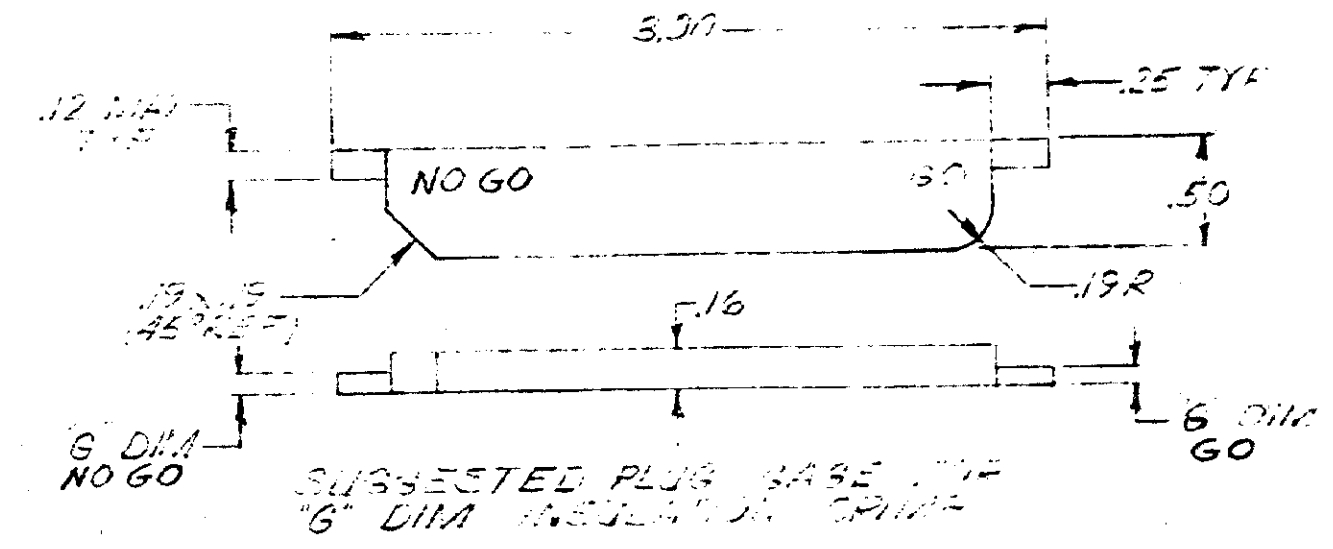


INSULATION CRIMP BARREL CRIMP
ENLARGED VIEW OF CRIMPS

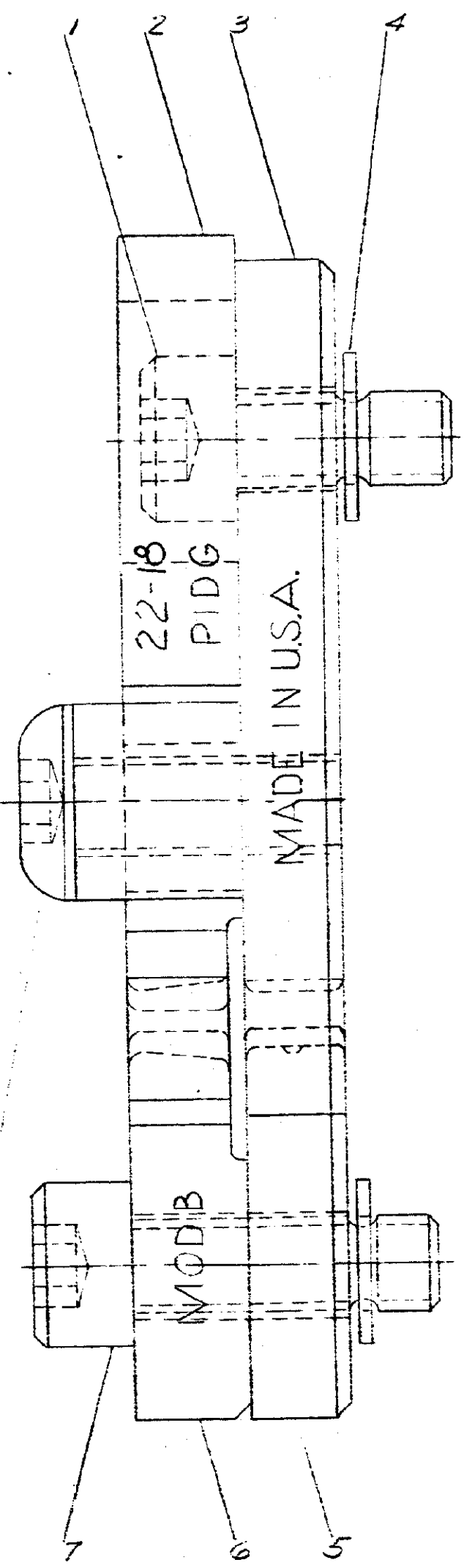
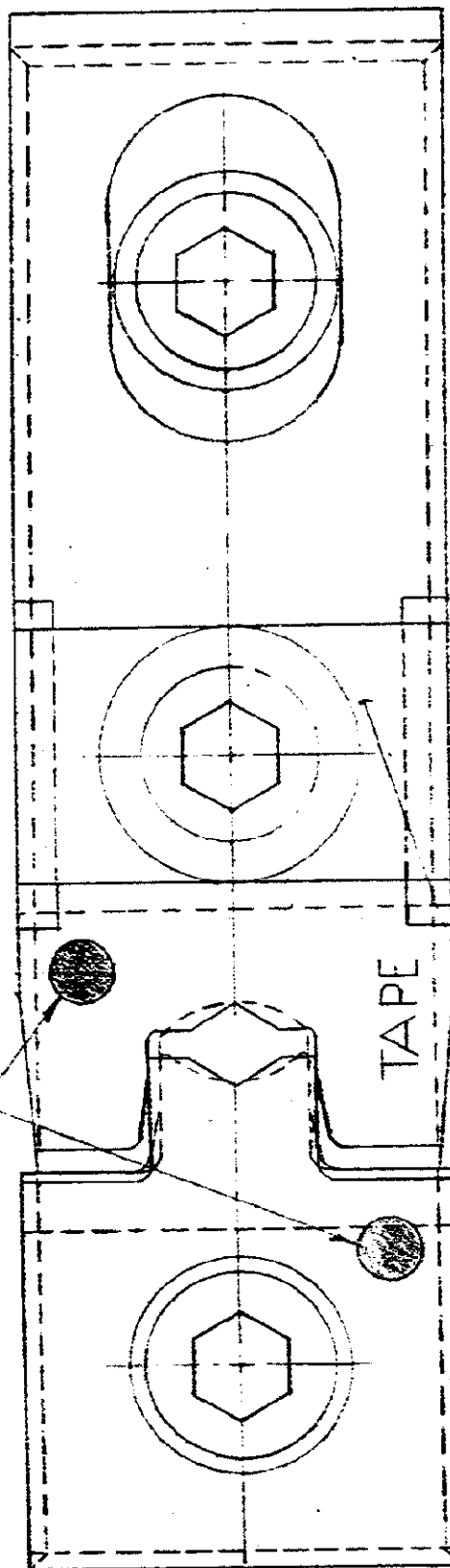
3/16 DIA AIR PEX #1		C' DIM	
GO	NO GO	GO	NO GO
.025	.050	.104	.105



SUGGESTED PLUG GAGE FOR 3/16 DIA BARREL CRIMP



SUGGESTED PLUG GAGE FOR 3/16 DIA INSULATION CRIMP



SUPERSEDED BY 69893 MOD C
I.S. 2243

QTY	NUMBER	NAME	REMARKS	ITEM NO.
1	307275-4	SADDLE		8
1	2-21007-1	SCREW (10-32 UNF 3A X .500 LONG)		7
1	59781-0	SCREW - SPECIAL		6
1	59613-3	BRVIL - INSULATION		5
1	59615-3	BRVIL -		4
2	21-21046-3	RING - RETAINERS		3
1	307079-3	INDENTER		2
1	307285-1	INDENTER - INSULATION		1
1	59781-2	SCREW - SPECIAL		

REQUIRED PER ASSEMBLY	NUMBER	NAME	REMARKS	ITEM NO.
© 1969 BY AMP INCORPORATED. ALL RIGHTS RESERVED. AMP PRODUCTS COVERED BY PATENTS AND/OR PATENTS PENDING.				
DATE: B. Shenfeld 12-9-69 BY: J. J. [Signature] 12-15-69		MATERIAL AND FINISH USED ON 69875		
WIRE - RANGE - INSULATION 22-181 +		TYPE C PIDG		
TOLERANCE EXCEPT AS NOTED ± .015 = 1" 0		SCALE 4-1 M/G NO 69893 REV B1		
NAME: [Signature] 12-15-69 DIE ASSEMBLY MOD B				

REV	DATE	DESCRIPTION	BY	CHKD
B1	12-15-69	SUP BY I.S. 2243	[Signature]	[Signature]
E		REVISED	[Signature]	[Signature]

PRINTED DIMENSIONS IN INCHES DO NOT SCALE PRINT