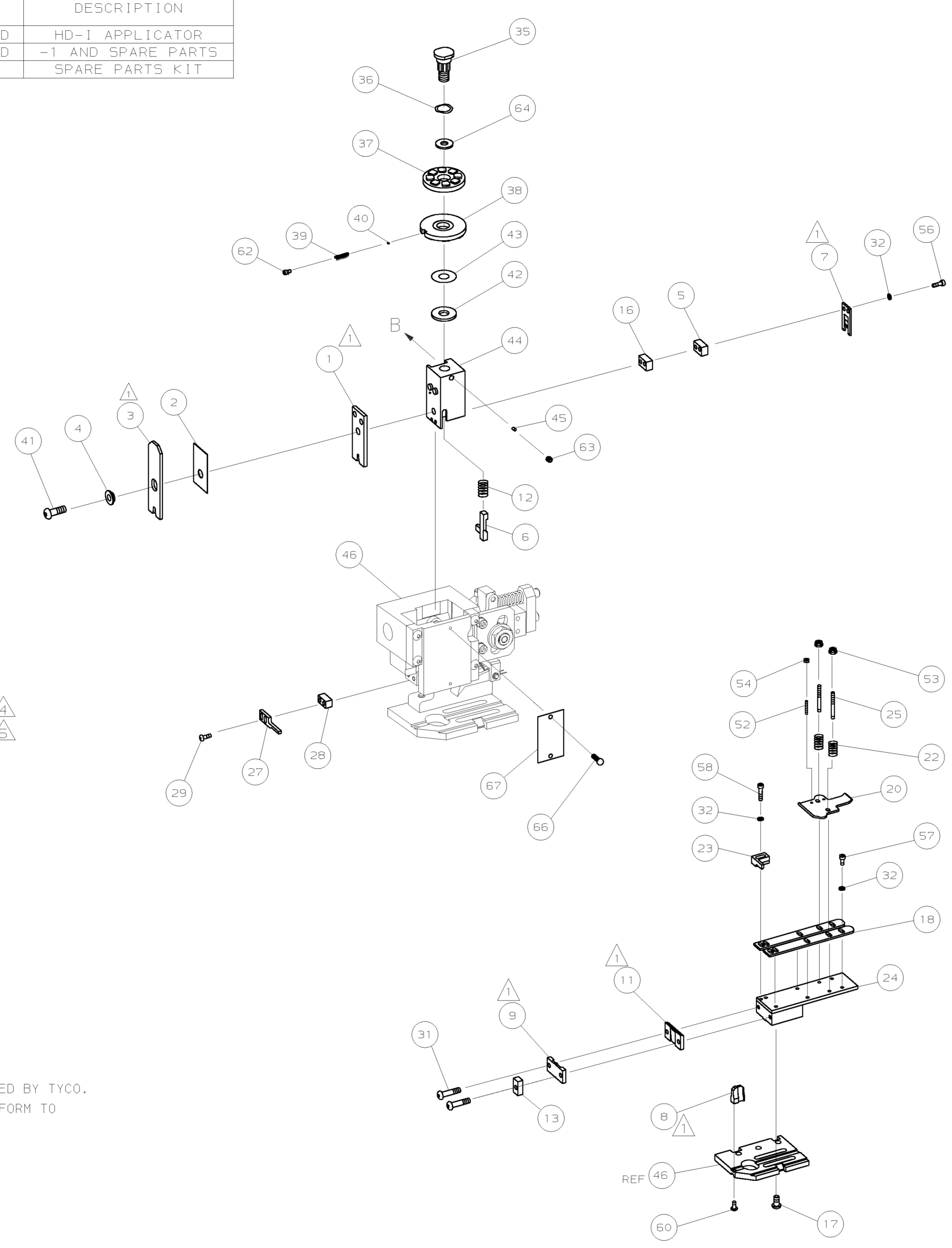
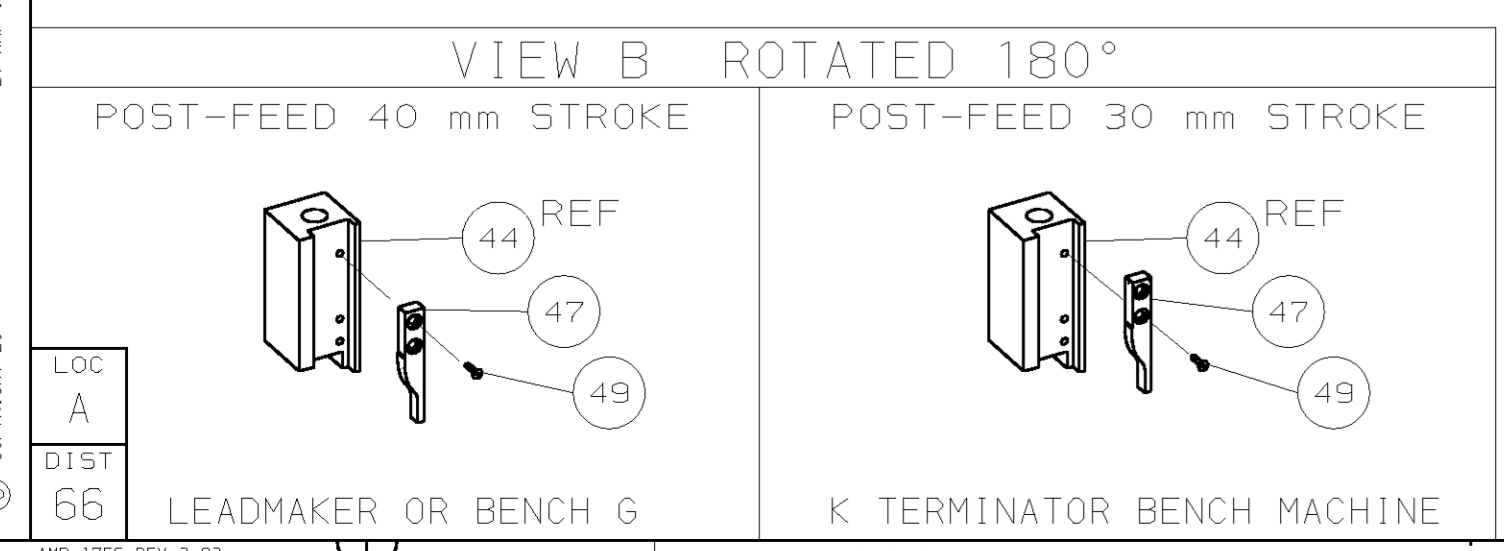


PART NUMBER	REV	FIRST USED	TERMINATOR	FEED TYPE	DESCRIPTION
1339722-1	A		BENCH & LEADMAKER	MECH POST FEED	HD-I APPLICATOR
7-1339722-1	A		BENCH & LEADMAKER	MECH POST FEED	-1 AND SPARE PARTS
7-1339722-7	A				SPARE PARTS KIT

CRIMP DATA STOCKO TERMINAL STOCKO CRIMP SPECS			
TERMINAL NAME: STOCKO R5B7872.007F6.3-2.5			
CRIMP	SIZE	TYPE	RANGE
WIRE	2.54 [1.00 IN]	F	0.50mm ² - 2.5mm ²
INSUL	4.57 [1.80 IN]	F	2.10-4.30 [0.83-.169 IN]
WIRE STRIP LENGTH		APPL INSTRUCTION	
4.53-5.33 [1.79-.210 IN]		408-8323	
TERMINAL APPL SPEC		FEED	
STOCKO DATA SHEET		18.80 [1.740 IN]	
TERMINALS APPLIED			
AMP PN	MFR PN		
1572356-1	7872.007F6.3-2.5	-	-
-	-	-	-
-	-	-	-
-	-	-	-
-	-	-	-
-	-	-	-
-	-	-	-
-	-	-	-
-	-	-	-
WIRE SIZE	CRIMP HEIGHT	PIN PN AND LENGTH [IN]	
mm ² AWG			
2.5mm ²	1.90 ±0.03 [0.075 ±0.001 IN]	8-354778-2 [1.2905]	
1.5mm ²	1.80 ±0.03 [0.071 ±0.001 IN]	9-354778-0 [1.2945]	
1.0mm ²	1.56 ±0.03 [0.061 ±0.001 IN]	1-354779-3 [1.3055]	
0.5mm ²	1.42 ±0.03 [0.056 ±0.001 IN]	2-354779-4 [1.3110]	



- 1. RECOMMENDED SPARE PARTS.
- 2. GREASE RAM, CAM, CAM FOLLOWER AND FEED ROD LIGHTLY.
- 3. LUBRICATE DAILY PER THE APPLICATOR INSTRUCTION SHEET SUPPLIED WITH THE APPLICATOR.
- 4. WIRE CRIMP WIDTH & WIRE CRIMP HEIGHT FOR 1.0mm² DETERMINED BY TYCO.
- 5. SECTIONS ON 0.5mm² WIRE SIZE SHOW THIS SIZE DOES NOT CONFORM TO TYCO STANDARDS THEREFORE IS NOT RECOMMENDED.
- 6. STRIP LENGTH CALCULATED FROM TERMINAL DIMENSIONS.



QTY	REV	PART NO	DESCRIPTION	ITEM NO	
-	1	1	1339722	PRINT, APPLICATOR LOG SHEET	73
-	1	1	1338705-2	DOCUMENTATION PACKAGE	72
					71
					70
					69
					68
-	1	1	461264-1	PLATE, IDENTIFICATION	67
-	2	2	21017-2	SCR,DRIVE (#2X.19) ID PLATE	66
					65
-	1	1	986950-1	WASHER, FLAT PRECISION	64
-	1	1	3-18031-0	SCR,SKT SET (M6X6) RAM	63
-	1	1	18023-9	SCR,SKT CAP (M4X6) CP DSC	62
					61
-	1	1	18024-7	SCR,BHC (M4X10) ANVIL	60
					59
-	2	2	1-18023-3	SCR,SHC (M4X16) HOLD DOWN	58
-	5	5	1-18023-0	SCR,SHC (M4X8) STRIP GUIDE	57
-	2	2	1-18023-2	SCR,SHC (M4X12) SLUG BLADE	56
					55
-	2	2	18029-1	NUT, HEX (M3) DRAG	54
-	2	2	986965-1	NUT, HEX SL (M4) DRAG STUD	53
-	2	2	2-18032-2	SCR,SKT SET (M3X10) DRAG	52
					51
					50
-	1	1	18024-3	SCR,BHC (M3X10) CAM	49
					48
-	1	1	1338676-1	CAM, POST-FEED 30 & 40 mm ST	47
-	1	1	1338662-1	APPLICATOR, BASIC (SUBASSY)	46
-	1	1	690191-1	PLUG, NYLON	45
-	1	1	1320998-1	RAM	44
-	1	1	690125-1	WASHER, LAMINATED	43
-	1	1	690124-1	WASHER, RAM	42
-	1	1	2-18024-6	SCREW,BHC (M8X25) CRIMPER	41
-	1	1	23241-1	BALL, STEEL	40
-	1	1	2-22278-7	SPRING, COMPRESSION	39
-	1	1	1320922-1	DISC, INSULATION	38
-	1	1	354777-1	WIRE DISC, PLASTIC	37
-	1	1	22480-5	WASHER, SPRING	36
-	1	1	690212-1	POST, RAM	35
					34
					33
-	9	9	18025-2	WASHER, LOCK (M4) SHEAR BL	32
-	2	2	1-18024-0	SCR,BHC (M4X20) SHEAR PL	31
					30
-	2	2	18024-8	SCR,BHC (M4X12) STRIPPER	29
-	1	1	3-690451-2	SPACER, STRIPPER	28
-	1	1	240639-1	STRIPPER	27
					26
-	2	2	1320906-1	DRAG, STUD	25
-	1	1	1320995-3	STRIP GUIDE	24
-	1	1	240825-1	PLATE, STRIP HOLD DOWN	23
-	2	2	4-22281-1	SPRING, DRAG	22
					21
-	1	1	1338665-1	DRAG, STOCK	20
					19
-	2	2	1338663-6	GUIDE, LOWER STRIP	18
-	4	4	1-18024-8	SCR,BHC (M6X12) STRIP GD PL	17
-	1	1	1338708-1	SPACER, SLUG BLADE	16
					15
					14
-	1	1	690481-2	SPACER, HOLD DOWN	13
-	1	1	23846-1	SPRING, HOLD DOWN	12
-	1	1	240833-2	PLATE, REAR SHEAR	11
					10
-	1	1	690482-6	PLATE, FRONT SHEAR	9
1	2	1	1-1333218-2	ANVIL	8
-	1	1	690474-6	BLADE, SLUG	7
-	1	1	1-455892-1	HOLD DOWN, TERMINAL	6
-	1	1	240641-6	SPACER, SLUG BLADE	5
-	1	1	238009-1	SPACER, BLOCK CRIMPER	4
1	2	1	4-456134-6	CRIMPER, INSULATION	3
-	1	1	455888-4	SPACER, CRIMPER	2
1	2	1	456407-6	CRIMPER, WIRE	1

REVISION OF EACH ASSY NO (WHEN BLANK, USE DWG REVISION)

QTY	REV	PART NO	DESCRIPTION	ITEM NO
-	77	-71	-1	

DIMENSIONS: mm [INCHES] MATL - HT TR - FIN -
DO NOT SCALE PRINT.
TOLERANCES UNLESS OTHERWISE SPECIFIED:
1 PLC DEC ±
2 PLC DEC ±
3 PLC DEC ±
ANGLES ±
SURF TEXTURE: ✓
REMOVE BURRS, BREAK SHARP EDGES RO.38 MAX

DR L.L.OFTHOUSE 280CT03 APP F.BACKHURST 280CT03
CHK - REL 04-12-03 M.CLIFFORD
NAME END FEED HD-I APPLICATOR MACHINE REF HD-I APPL
SCALE - DWG NO 1339722 SHEET 1 OF 1 REV A

AMP Tyco Electronics Harrisburg, PA 17105-3608

CAGE CODE 00779 CUSTOMER AND ASSEMBLY DRAWING

THIS DRAWING IS A CONTROLLED DOCUMENT.

LAYOUT L1339722
SET UP GAGE 458638-3

RELEASED FOR PUBLICATION
BY AMP INCORPORATED. ALL RIGHTS RESERVED.
THIS DRAWING IS UNRELEASED.
COPYRIGHT 20