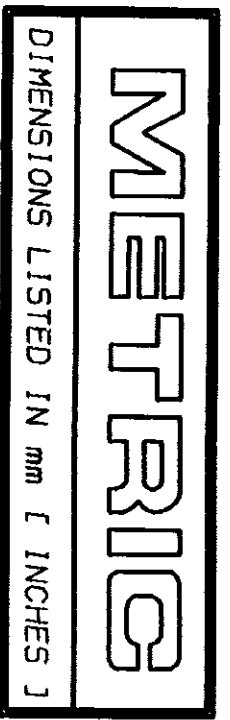
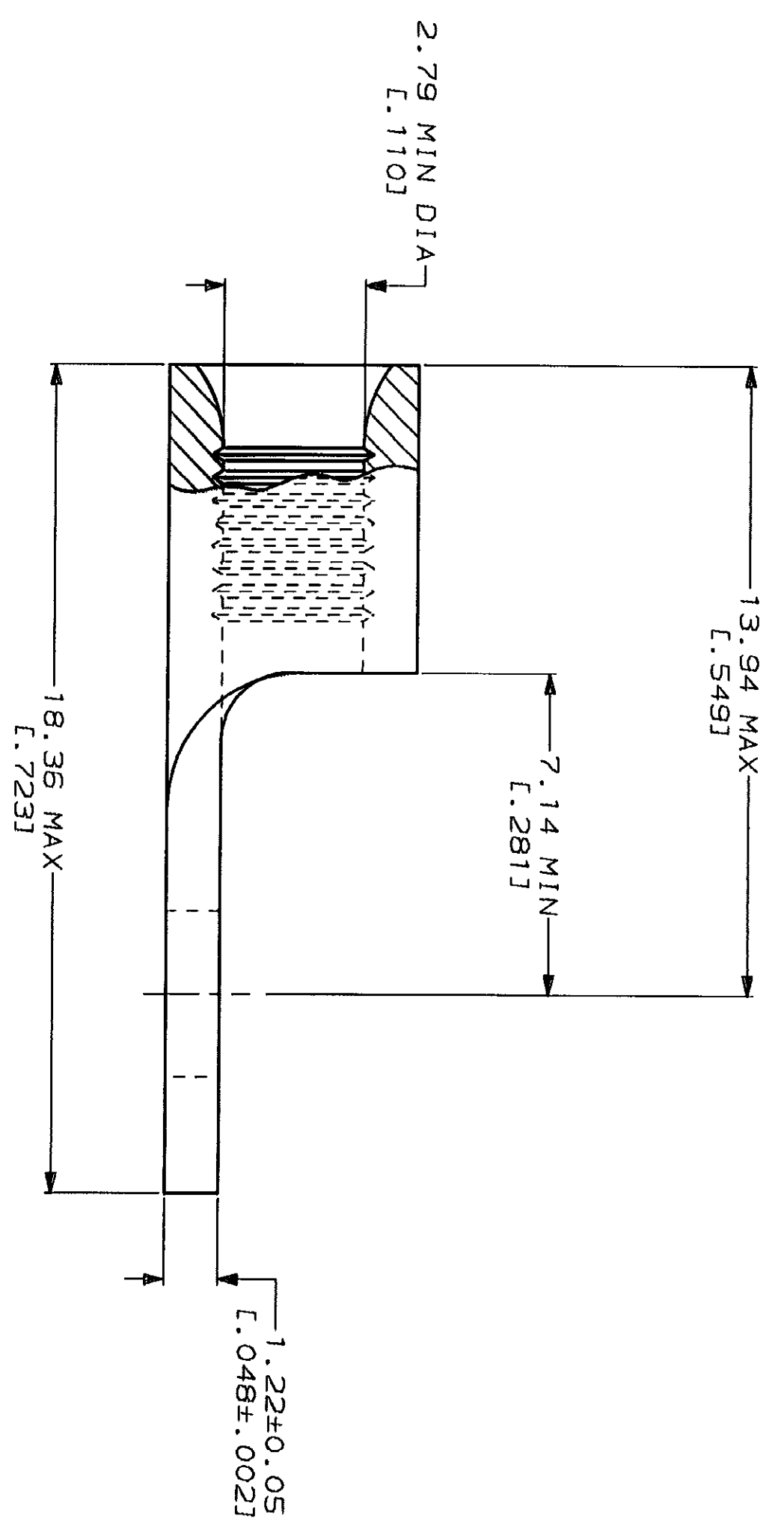
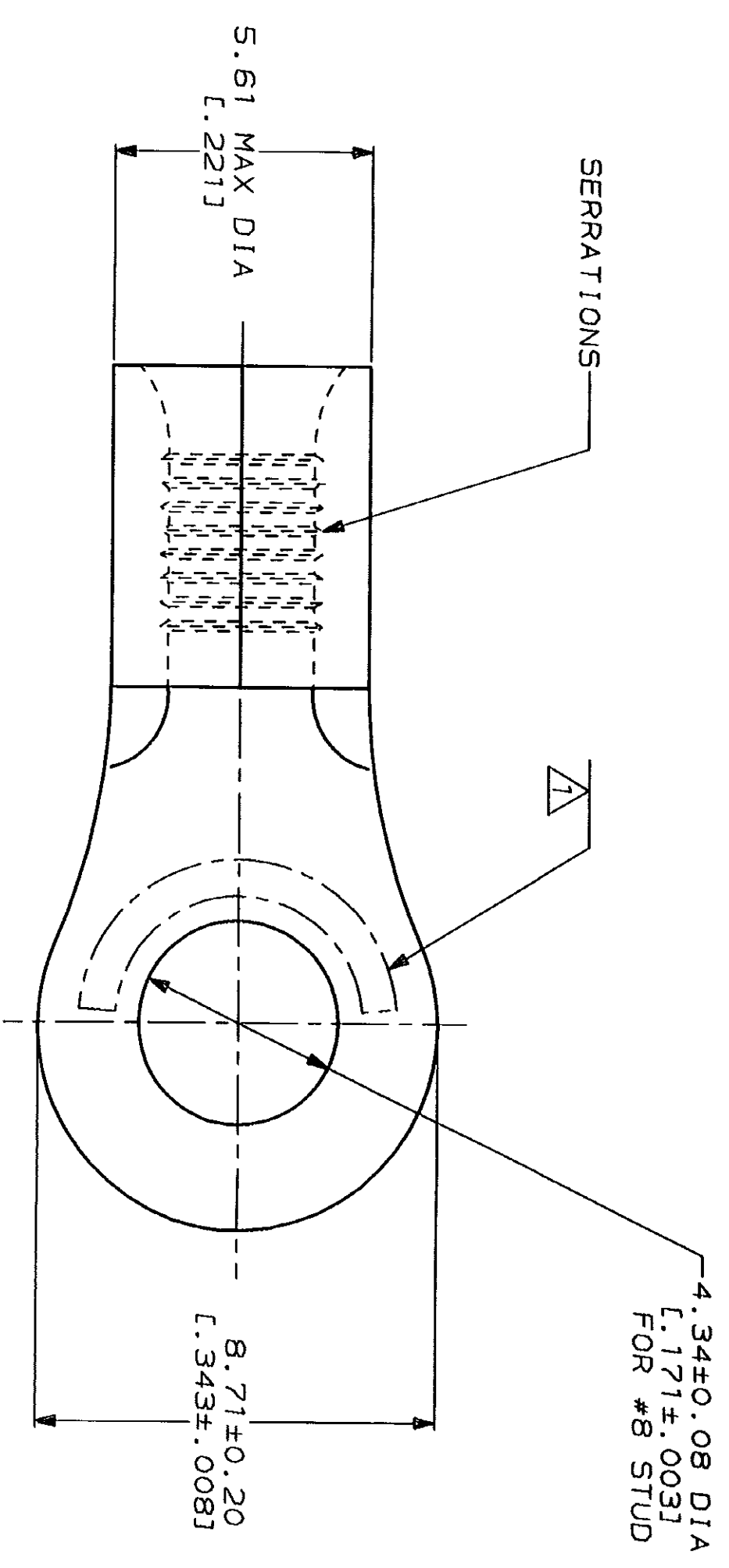


LOC	DIST	REV	DESCRIPTION	DATE	APPD
G	14	P	REV 8 REDRAWN PER 0720-0008-93	1-26-93	gdp



AMP WIRE RANGE	UL E13288 Listed
16-14HD AWG STRANDED	16-14HD AWG STRANDED
LR7189 Certified	MILITARY P/N AND CLASS
NOT CERTIFIED	NOT APPLICABLE

STAMP AMP 16-14HD* APPROX AS SHOWN



AMP INCORPORATED CUSTOMER SERVICE SYSTEMS		MAX RECOMMENDED OPERATING TEMPERATURE: 170°C MAX		DO NOT SCALE PRINT. UNLESS SPECIFIED DIMENSIONS IN INCHES - TOLERANCES ON: 3 PLG DEC ± ANGLES ± MATERIAL	
FOR ADDITIONAL PRODUCT INFORMATION OR COPIES OF DRAWINGS AND TECHNICAL DOCUMENTS	PRODUCT INFORMATION CENTER 1-800-522-6752	VOLTAGE RATING: NOT APPLICABLE		COPPER PER ASTM B-152 ANNEALED	
FOR APPLICATION TOOLING INFORMATION	TOOLING ASSISTANCE CENTER 1-800-722-1111	WIRE CROSS SECTIONAL AREA RANGE: 1.04-2.62mm ² [2,050-5,180] CIR MILS STRANDED		FINISH: TIN PLATE 0.00254 [L.0001001] MIN THK PER MIL-T-10727	
FOR ORDER ENTRY	1-800-526-5142	THIS DRAWING IS A CONTROLLED DOCUMENT FOR AMP INCORPORATED. IT IS SUBJECT TO CHANGE WITHOUT NOTICE. CONTACT THE AMP DESIGN ORGANIZATION SHOULD BE CONTACTED FOR THE LATEST REVISION.		DR 1-26-93 GL KRUPER CHK 1-26-93 DA PATTERSON APPD 1-26-93 DE MILLER APPD 1-26-93 JL MECKLEY PRODUCT SPEC	
AMP 1471-B REV 3-92		AMP 26463		33717	
20 JUL 1993 15:47:30		AMP 26463		33717	
AMP 1471-B REV 3-92		AMP 26463		33717	

AMP
AMP Incorporated
Harrisburg, PA 17105-3608

TERMINAL, RING TONGUE,
HEAVY DUTY, BUDGET