

MATERIALS AND FINISHES

BODY BRASS
PLATED GOLD

CENTER CONTACT PHOSPHOR BRONZE
PLATED GOLD

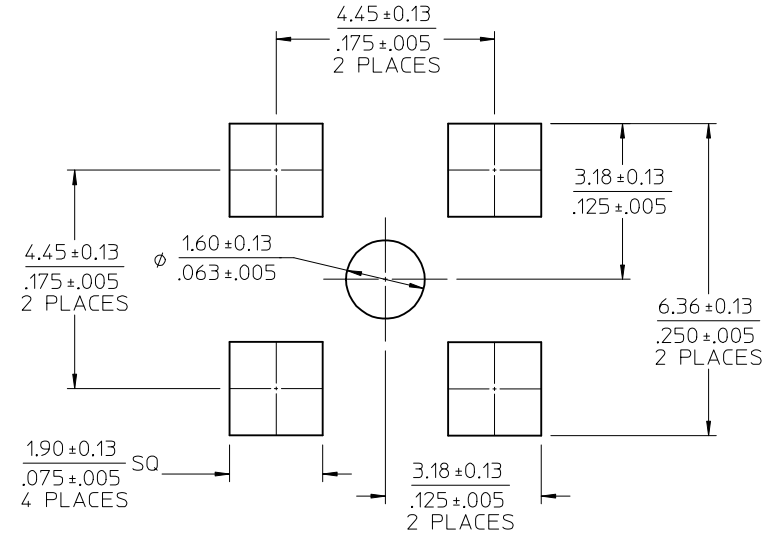
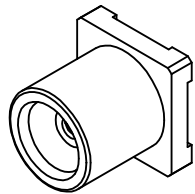
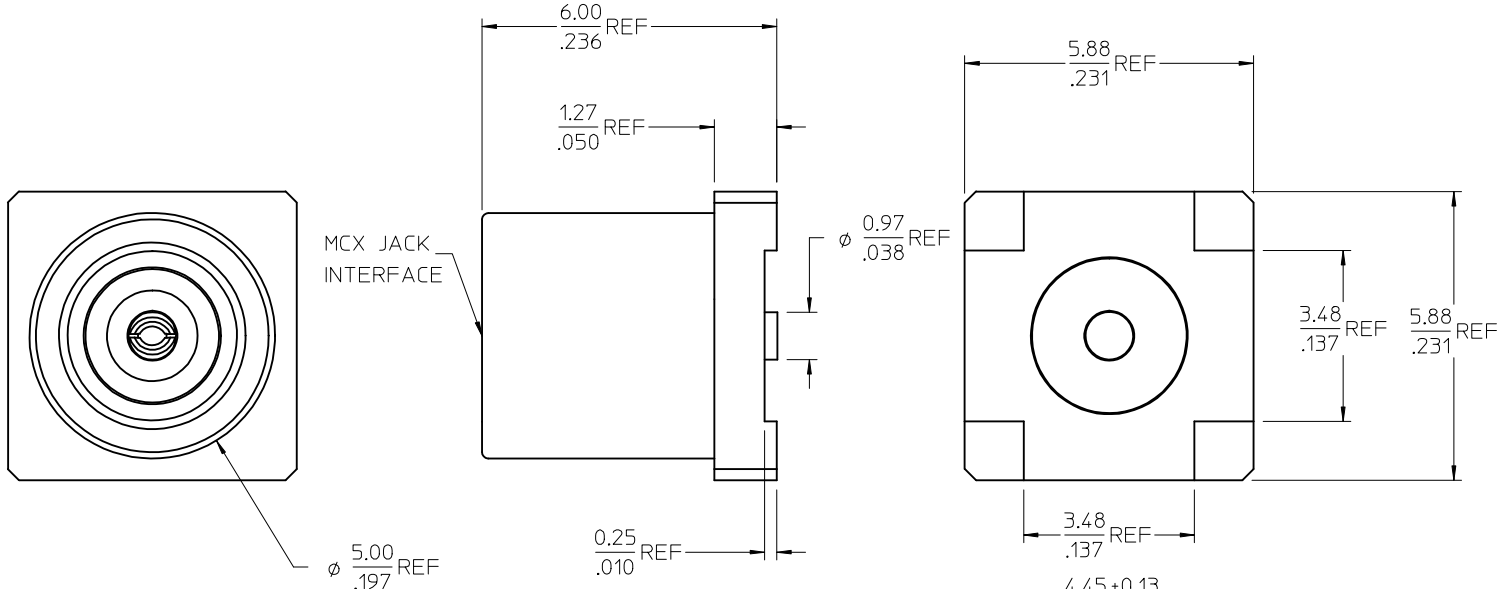
INSULATOR TEFLON

TAPE MOUNTING: SEE SHEET 2

P/N: 73415-4500:
PACKAGED WITH KAPTON TAPE

P/N: 73415-4501
PACKAGE BY BAG

P/N: 73415-4502:
PACKAGED WITHOUT KAPTON TAPE



RECOMMENDED MOUNTING PATTERN

PS-89675-1910	ELECTRO/MECH PERFORM.
SPECIFICATION	DESCRIPTION

A3	ADDED PACKAGE DESCRIPTION PER RF17-E050	EC NO: URF2017-0333	2017/03/16	DRWNLIN	2017/03/16	CHKD:	2017/03/16	APPR: YCHENG	2017/03/16
	REV	DESCRIPTION	REV	DESCRIPTION	REV	DESCRIPTION	REV	DESCRIPTION	REV

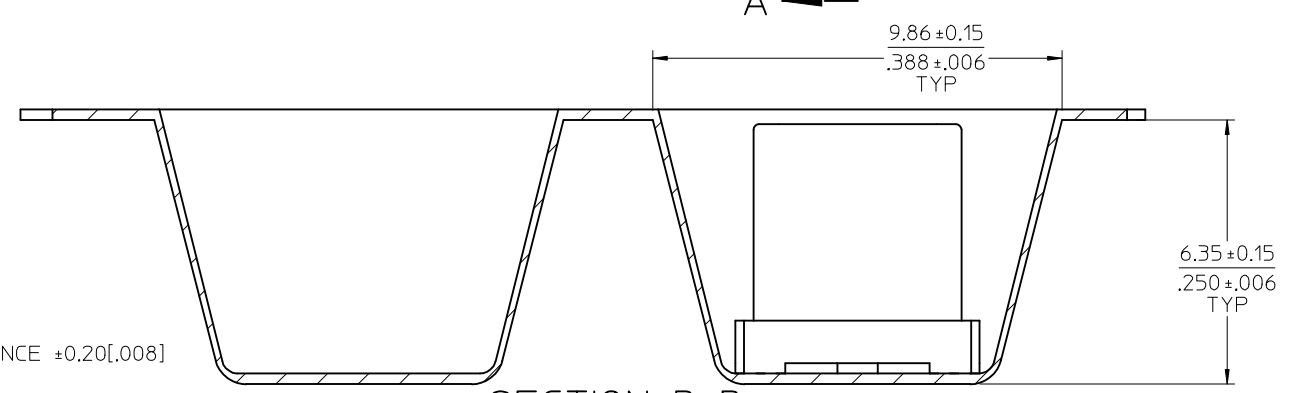
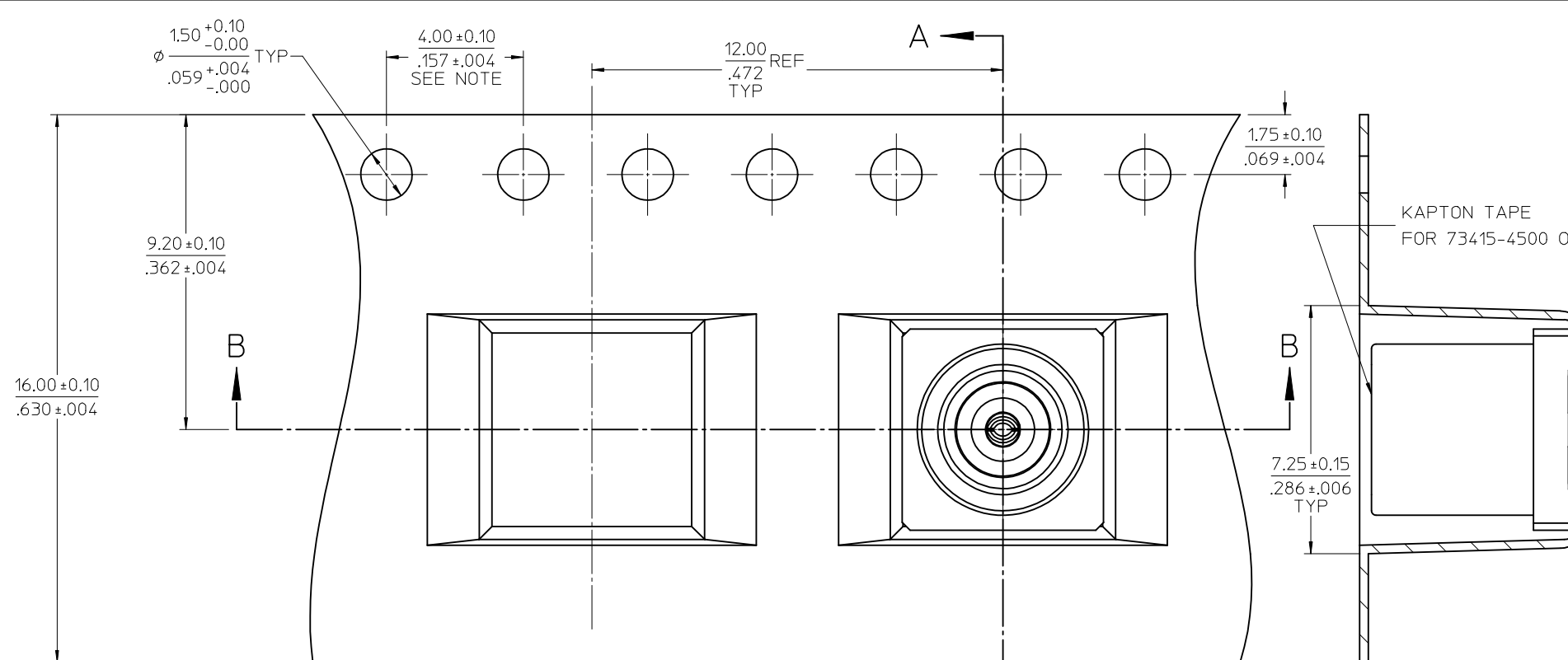
QUALITY SYMBOLS	▼=0	▽=0
-----------------	-----	-----

GENERAL TOLERANCES (UNLESS SPECIFIED)	mm	INCH
4 PLACES	± .10	± .004
3 PLACES	± .15	± .006
2 PLACES	± .20	± .008
1 PLACE	± .30	± .012
ANGULAR ± 2 °		
DRAFT WHERE APPLICABLE MUST REMAIN WITHIN DIMENSIONS		

DIMENSION STYLE		SCALE
MM/IN		METRIC
DRAWN BY	DATE	TITLE
SSS	2001/09/04	MCX JACK, PCB/SMT 50 OHMS, EWR-1472 MCX-J/PCB/SMT
CHECKED BY	DATE	
TEF	2001/09/04	MOLEX INCORPORATED
APPROVED BY	DATE	
GMH	2001/09/04	DOCUMENT NO.
MATERIAL NO.		SD-73415-450
SEE NOTE		SHEET NO.
SIZE C		1 OF 2

THIRD ANGLE PROJECTION	
------------------------	--

13 12 11 10 9 8 7 6 5 4 3 2 1



NOTE:
10 PITCHES CUMULATIVE TOLERANCE ±0.20[.008]

SECTION B-B

SECTION A-A

CHG: SEE SHEET 1 EC NO: URF2017-0333 DRWNLIN 2017/03/16 CHKD: APPR: YCHENG 2017/03/23 REV: A3	QUALITY SYMBOLS ▽=0 ▽=0	GENERAL TOLERANCES (UNLESS SPECIFIED) 4 PLACES ± --- ± --- 3 PLACES ± --- ± --- 2 PLACES ± --- ± --- 1 PLACE ± --- ± --- ANGULAR ± 2°	DIMENSION STYLE MM/IN DRAWN BY: SSS DATE: 2001/09/04 CHECKED BY: TEF DATE: 2001/09/04 APPROVED BY: GMH DATE: 2001/09/04	SCALE: METRIC DESIGN UNITS: METRIC THIRD ANGLE PROJECTION	TITLE: MCX JACK, PCB/SMT 50 OHMS, EWR-1472 MCX-J/PCB/SMT	MOLEX INCORPORATED DOCUMENT NO. SD-73415-450 SHEET NO. 2 OF 2	
	DRAFT WHERE APPLICABLE MUST REMAIN WITHIN DIMENSIONS		MATERIAL NO. SEE SHT 1	THIS DRAWING CONTAINS INFORMATION THAT IS PROPRIETARY TO MOLEX INCORPORATED AND SHOULD NOT BE USED WITHOUT WRITTEN PERMISSION			