

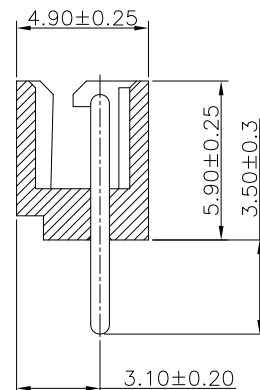
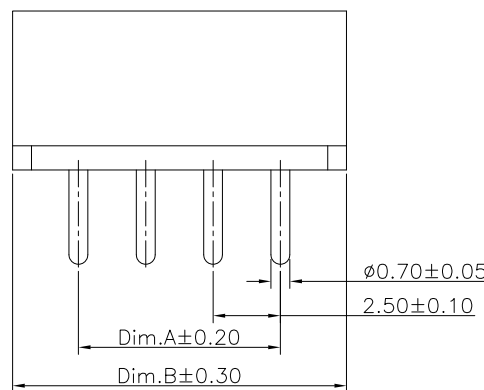
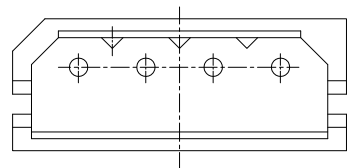
1

2

3

4

5

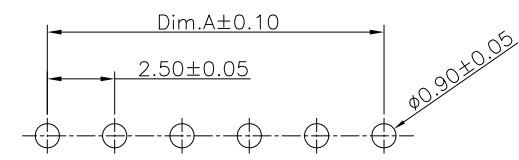


Specifications:
 Current Rating:3.0A AC,DC
 Voltage Rating:250V AC,DC
 Contact Resistance:20mohm Max
 Insulation Resistance:1000Mohm Min.
 Withstanding Voltage:1000V AC/minute
 Operating Temperature Range:-40°C~+85°C

Material and Finish
 Insulator:Nylon 66 UL94V-0
 Insulator Color:Beige
 Contact:Brass
 Plating:Tin Plated

Dimension:

Circuits	Dim.A	Dim.B	Circuits	Dim.A	Dim.B
2	2.50	7.50	9	20.00	25.00
3	5.00	10.00	10	22.50	27.50
4	7.50	12.50	11	25.00	30.00
5	10.00	15.00	12	27.50	32.50
6	12.50	17.50			
7	15.00	20.00			
8	17.50	22.50			



PCB Layout

RoHS Compliant

				DRAWN:	GENERAL TOLERANCE: .X=±0.20 .XX=±0.15	<h1 style="color: red; text-align: center;">CnC Tech</h1> <p style="text-align: center;">Industrial Cable and Connector Technology</p>	
				CHECKED:	UNIT: MM SCALE:1:1		
				APPROVAL:	SHEET: 1 / 2	PART NO:	A4
REV	DATE	FILE	BY		PROJECTION:	52025-XX-0100-01	