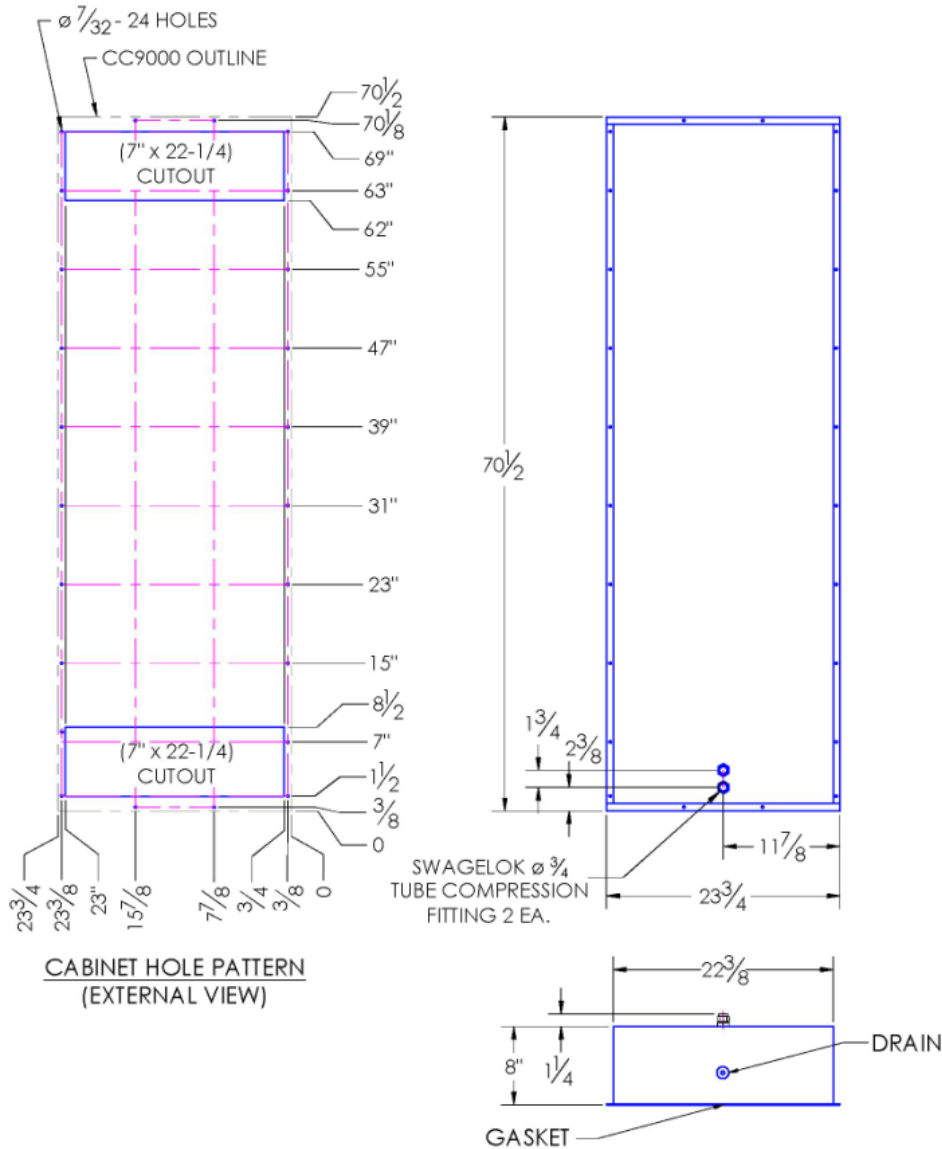


CC9000 & CC9000P* COMPACT CABINET COOLER AIR-TO-WATER FLUSH-MOUNT MODEL

Model	Weight	Rating @ 40°C ΔT BTU / hr	Amps Current Draw at 115 volts AC	Fan Size	Dimensions-Inches (H x W x D)
CC9000	79 lbs	57,000	2.4	8 x 6"	70-1/2 x 23-3/4 x 8

Efficiency: 417.0 Watts / °C ΔT based on average internal cabinet temperature.



SPECIFICATIONS

- CC9000 Rated cooling: 16,680 Watts mounted to an uninsulated 72" x 36" x 24" Cabinet with 2 GPM of water at 20°C, 40°C ambient air and 60°C cabinet air temperature.
- Designed for surface mounting on the outside of cabinet.
- Housing is aluminum (color is black) or stainless steel.
- External water inlet and outlet connections.
- Equipped with mounting gasket to maintain air tight seal.
- * 6. "P" unit is pressure tested to assure water tight seal.**
- Available with AC (115 & 230V) and DC (12, 24, & 48V) fans.
- Vertical mounting only (as shown).
- Coolant water pressure: Pressure tested to 100 psi. Safe working pressure is 60 psi.
- Recommended coolant flow rate (gallons per minute): 2 GPM
- 11. For design, quote, and sizing assistance: call (866) 936 - 6736.**



NOREN 1010 O'Brien Drive
Mentlo Park, CA 94025
650.322.9500
norenproducts.com

CC9000 & CC9000P*

CCS-PBD-7.2.2-883322-C