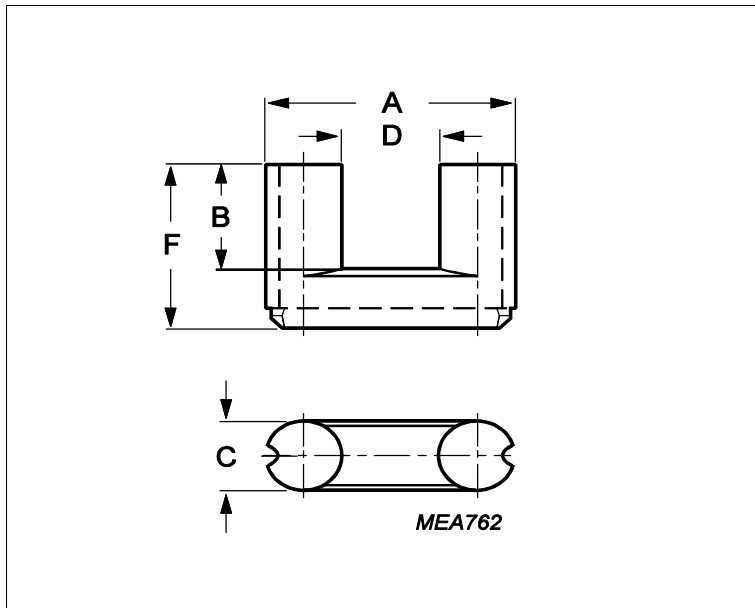


Core **UR57/28/16**



Effective parameters			
	Parameter	Value	Unit
$\Sigma(I/A)$	core factor (C1)	0.953	mm ⁻¹
Ve	effective volume	27900	mm ³
Le	effective length	163	mm
Ae	effective area	171	mm ²
Amin	minimum area		mm ²
m	UR57/28/16	≈ 70	g/pcs

Dimensions for product: UR57/28/16						
	Nom	Tol +	Tol -	Max	Min	Unit
A	57.65	1.70	1.70	59.35	55.95	mm
B	16.00	0.50	0.50	16.50	15.50	mm
C	15.90	0.40	0.40	16.30	15.50	mm
D	27.80	0.90	0.90	28.70	26.90	mm
F	28.40	0.20	0.20	28.60	28.20	mm

Inductance factor				
Material	Value	Tol +	Tol -	Unit
3C90	2600	25%	25%	nH/turns ²

Power loss: 3C90				
Measuring conditions			Max	Unit
25 kHz	200 mT	100 °C	3.300	W/set

Bsat					
Measuring conditions			Material	Min	Unit
10 kHz	250 A/m	100 °C	3C90	320	mT