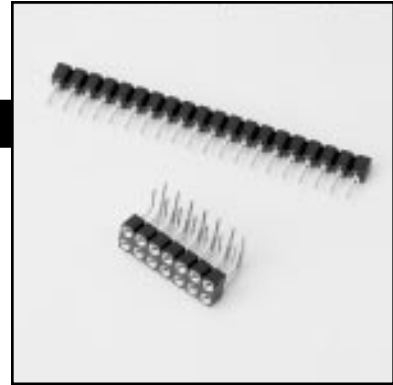


Series: SBU, DBU

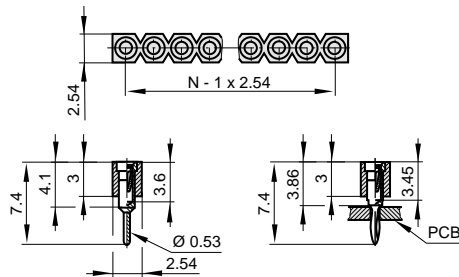
Low Profile Machined Female Header



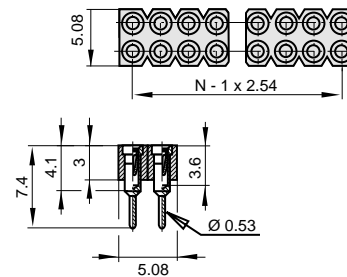
- ❖ Insertion depth, 2.4 mm min. - 3.9 mm max.
- ❖ Insertion diameter, 0.40 mm min. - 0.56 mm max.
- ❖ Six finger clip with funnel design entry
- ❖ Side and end stackable
- ❖ Single row 1 - 64 positions
- ❖ Dual row 4 - 64 positions

Ordering examples:

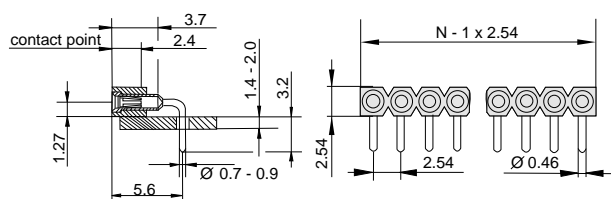
SBU - 32 0 Z



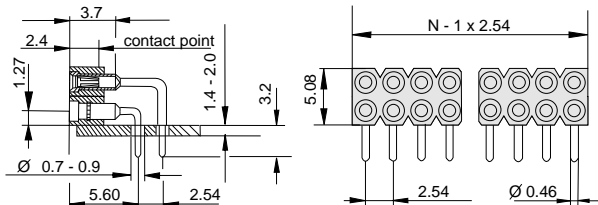
DBU - 64 0 Z



SBU - 32 0 Z - R



DBU - 64 0 Z - R



Specifications

Machined Pin Female Header Series:

SBU **SBL**
DBU **DBL**

Ratings:

| | |
|---------------------------|----------------------|
| Current for SBU, DBU | 1A max. |
| Current for SBL, DBL | 3A max. |
| Voltage | 10 mV - 60 V |
| Dielectric strength | > 1000 V (RMS) |
| Contact resistance | ≤ 7 mΩ |
| Insulation resistance | > 10 ¹² Ω |
| Air and creepage distance | > 0.6 mm |
| PCB thickness | 1.6 mm - 2.0 mm |
| PCB hole size | .7 mm - .9 mm |

Material:

| | |
|-------------------|--|
| Plastic | PBT, Glass-filled, UL94V-0 |
| Color | Black |
| Sleeve | Turned brass, Flash copper plated, Nickel 2-3μm, Tin 5μm |
| Clip | Beryllium-copper, Nickel 2-3μm, Gold 0.25μm |
| Temperature range | -55°C / +125°C, 260°C for 5 sec. (solder bath resistant) |
| Mechanical life | 100 cycles |

ORDERING PROCEDURE

 1 - 2 3 4 - 5

- 1) Series
- 2) Number of Positions (see series page for available positions)
- 3) Contact style:
O = Solder tail
- 4) Plating:
Z = Gold clip/Tin sleeve
G = Gold clip/Gold sleeve
- 5) Series options:
R = Right angle

Please refer to following pages for ordering examples.