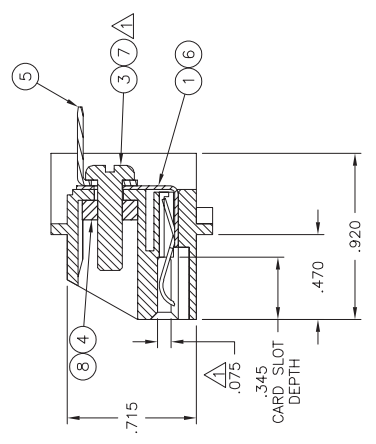
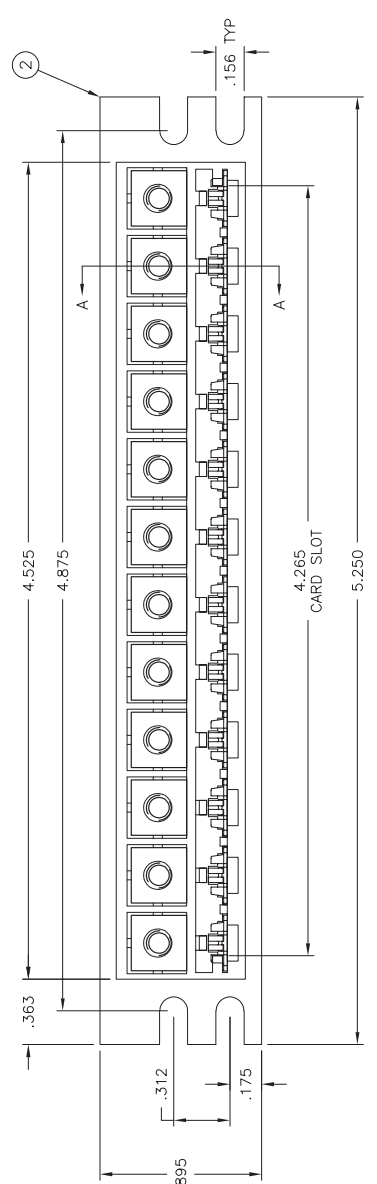
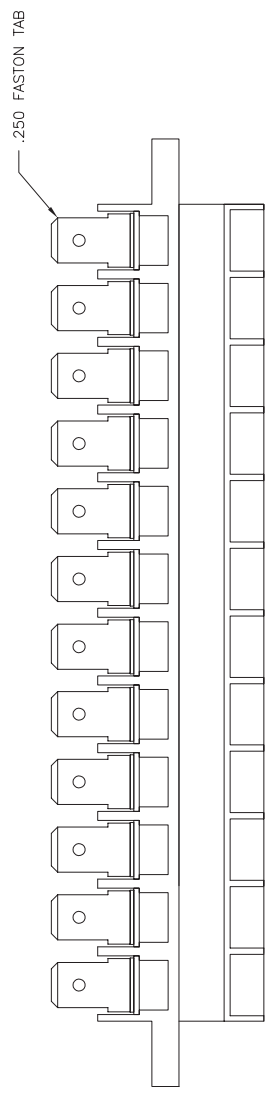
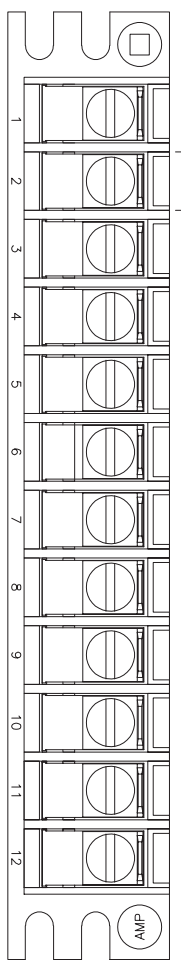


THIS DRAWING IS UNPUBLISHED.  
 © COPYRIGHT BY TYCO ELECTRONICS CORPORATION.  
 RELEASED FOR PUBLICATION  
 ALL RIGHTS RESERVED.

LOC	DIST	REV	DATE	UN	APP
FT	O	E	3/30/06	SS	DC
REVISIONS		DESCRIPTION			
E		REVISED PER ECO-08-0023			

ACCEPTS .062±.007 THK PCB.  
 2. MAX ALLOWABLE BOW TO BE .003 PER INCH OF HOUSING.



ITEM NO.	DESCRIPTION	MATERIAL & FINISH
1	HOUSING	POLYCARBONATE, COLOR: GRAY
2	6-32 SCREW	STEEL, ZINC W/ HEXAVALENT CHROMATE
3	6-32 NUT	STEEL, ZINC W/ HEXAVALENT CHROMATE
4	FASTON TAB	.020 PHOS BRZ, TIN PLATED
5	CONTACT	STEEL, ZINC W/ NON-HEXAVALENT CHROMATE
6	6-32 SCREW, STEEL	STEEL, ZINC W/ NON-HEXAVALENT CHROMATE
7	6-32 SCREW, STEEL	STEEL, ZINC W/ NON-HEXAVALENT CHROMATE
8	6-32 NUT, STEEL	STEEL, ZINC W/ NON-HEXAVALENT CHROMATE

THIS DRAWING IS A CONTROLLED DOCUMENT.		UN	SCHLEGE	28MRC206
DIMENSIONS: INCHES		CHK		
TOLERANCES UNLESS SPECIFIED:		APP		
Ø	± .005	PRODUCT SPEC		
PLC	± .02	APPLICATION SPEC		
PLC	± .005	WEIGHT		
PLC	± .002	CUSTOMER DRAWING		
ANGLES	± .002/30°	SCALE	2:1	SHEET 1 of 1
FINISH		RESTRICTED TO		
MATERIAL		SIZE	A2.00779	©=350883
		DRWING NO		
		NAME	12 CIRCUIT MULTIPLE TAP EDGE CONNECTOR ASSY	
		FINISH		
		DATE		
		SIZE		
		RESTRICTED TO		
		SCALE	2:1	SHEET 1 of 1
		REV		
		ITEM NO.		

**Tyco Electronics**  
 Tyco Electronics Corporation  
 Harrisburg, PA 17105-3608