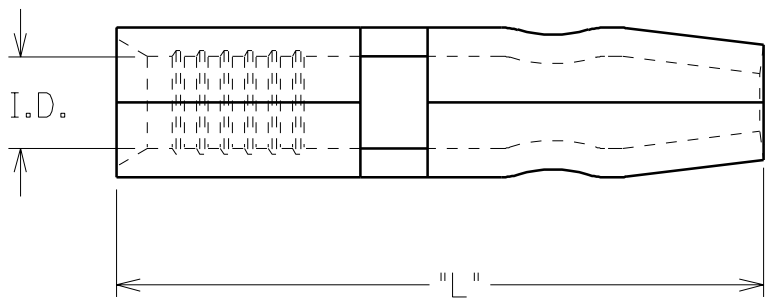


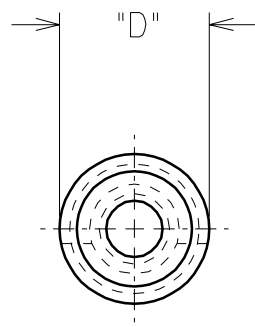
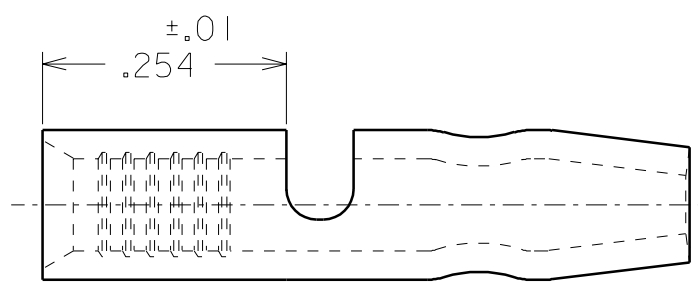
PART NUMBER	WIRE RANGE AWG	±.003 "I.D."	±.002 "D"	±.02 "L"
A-159	22-18	.065	.180	.734
A-169	22-18	.065	.156	.674
B-179	16-14	.084	.180	.734
B-189	16-14	.084	.156	.674

DRWG. NO. CD-1802

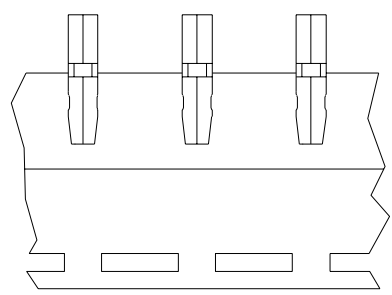
PART NUMBERS ARE FOR LOOSE PIECE. TO ORDER PARTS ON TAPE ADD "T" TO END OF PART NUMBER



MATERIAL: COPPER .031 ±.001 THICK  
FINISH: ELECTRO-TIN PLATING  
THICKNESS .000030 MINIMUM



C	.064 WAS .126 .084 WAS .156 ETC60466 6/18 RCM
B	ADDED PLATING THICKNESS ETC60363 3/14 RCM
A	ADDED TOLERANCES REVISED DIMENSIONS ETC60322 2/6 RCM
LTR.	REVISIONS



PARTS ON TAPE

DIMENSIONS SHOWN (METRIC) INCH		
UNLESS OTHERWISE SPECIFIED TOLERANCES: ANGULAR ± 1/2°		
	INCH	METRIC
3 PLACE	± .005	± ---
2 PLACE	± .01	± 0.13
1 PLACE	± ---	± 0.25

DRAFT WHERE APPLICABLE MUST  
REMAIN WITHIN DIMENSIONS

DRWG. BY	RCM	CHK'D. BY	RWD
APP'D. BY	RWD	SCALE	NO:NE

REVISE ONLY ON CAD SYSTEM	
TITLE	
KRIMPTITE MALE BULLET SNAP PLUG	
<b>ETC INC.</b> PINELLAS PARK, FLA. 33781 U.S.A.	SHEET NO. _____ DATE 92/09/29
PART NO. <b>SEE CHART</b>	DRWG. NO. <b>CD-1802</b>
FILE NAME CD1802 CST	THIS DRAWING CONTAINS INFORMATION THAT IS PROPRIETARY TO MOLEX-ETC INC. AND SHOULD NOT BE USED WITHOUT WRITTEN PERMISSION.
DIV.	SIZE <b>A</b>